

COMPASS

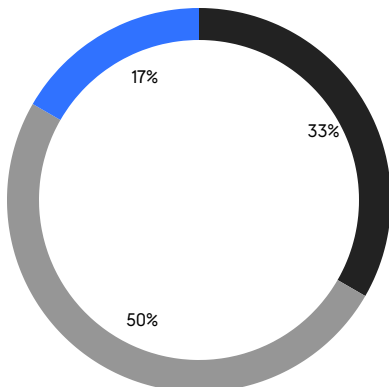
QUEENS WEEKLY LUXURY REPORT



1818 CORNELIA STREET

RESIDENTIAL CONTRACTS
\$1.25 MILLION AND UP

- CENTRAL QUEENS
- NORTHEASTERN QUEENS
- NORTHWESTERN QUEENS



12

CONTRACTS SIGNED
THIS WEEK

\$20,434,776

TOTAL CONTRACT VOLUME

The Queens luxury real estate market, defined as all properties priced \$1.25M and above, saw 12 contracts signed this week, made up of 2 condos, and 10 houses. The previous week saw 9 deals. For more information or data, please reach out to a Compass agent.

\$1,702,898

AVERAGE ASKING PRICE

\$1,478,000

MEDIAN ASKING PRICE

\$986

AVERAGE PPSF

1%

AVERAGE DISCOUNT

\$20,434,776

TOTAL VOLUME

131

AVERAGE DAYS ON MARKET

66 Greenway Terrace in Forest Hills entered contract this week, with a last asking price of \$3,188,000. Built in 1925, this single-family house offers 6 beds and 4 full baths. It features a stone fence and private entryway, hardwood and stone floors throughout, elegant sconce and chandelier lighting, a fireplace, a central staircase, an office and built-in shelving, a kitchen with high-end appliances and glass-paneled cabinetry, a media room, a rear brick patio, and much more.

Also signed this week was 214-42 27th Avenue in Bay Terrace, with a last asking price of \$2,600,000. Originally built in 1940, this single-family house spans 3,024 square feet with 5 beds and 4 full baths. It features a large landscaped lot, a front entry with columns, a grand foyer, hardwood floors, a fireplace, French doors, a gourmet kitchen with high-end appliances and custom cabinetry, a primary bedroom with private balcony, walk-in closet, and marble en-suite bath, and much more.

2

CONDO DEAL(S)

0

CO-OP DEAL(S)

10

TOWNHOUSE DEAL(S)

\$1,548,000

AVERAGE ASKING PRICE

\$0

AVERAGE ASKING PRICE

\$1,733,878

AVERAGE ASKING PRICE

\$1,548,000

MEDIAN ASKING PRICE

\$0

MEDIAN ASKING PRICE

\$1,478,000

MEDIAN ASKING PRICE

\$1,613

AVERAGE PPSF

\$846

AVERAGE PPSF

972

AVERAGE SQFT

1,933

AVERAGE SQFT



66 GREENWAY TERRACE

Forest Hills

TYPE	TOWNHOUSE	STATUS	CONTRACT	ASK	\$3,188,000	INITIAL	\$3,188,000
SQFT	N/A	PPSF	N/A	BEDS	6	BATHS	4.5
FEES	\$1,749	DOM	2				



214-42 27TH AVE

Bay Terrace

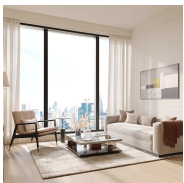
TYPE	TOWNHOUSE	STATUS	CONTRACT	ASK	\$2,600,000	INITIAL	\$2,600,000
SQFT	3,024	PPSF	\$860	BEDS	5	BATHS	4.5
FEES	\$1,416	DOM	113				



135 SLOCUM CRESCENT

Forest Hills

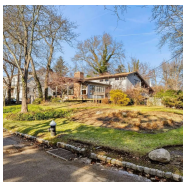
TYPE	TOWNHOUSE	STATUS	CONTRACT	ASK	\$1,799,000	INITIAL	\$1,799,000
SQFT	1,888	PPSF	\$953	BEDS	4	BATHS	2.5
FEES	\$1,281	DOM	N/A				



35-32 LEAVITT ST #12F

Flushing

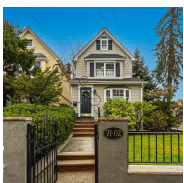
TYPE	CONDO	STATUS	CONTRACT	ASK	\$1,781,000	INITIAL	\$1,781,000
SQFT	1,172	PPSF	\$1,520	BEDS	2	BATHS	2
FEES	\$2,155	DOM	6				



355 KNOLLWOOD AVE

Douglaston

TYPE	TOWNHOUSE	STATUS	CONTRACT	ASK	\$1,498,888	INITIAL	\$1,498,888
SQFT	2,389	PPSF	\$627	BEDS	5	BATHS	2.5
FEES	\$1,574	DOM	42				



71-02 MANSE ST

Forest Hills

TYPE	TOWNHOUSE	STATUS	CONTRACT	ASK	\$1,488,000	INITIAL	\$1,488,000
SQFT	1,261	PPSF	\$1,181	BEDS	4	BATHS	3.5
FEES	\$891	DOM	41				

Compass is a licensed real estate broker and abides by Equal Housing Opportunity laws. All material presented herein is intended for informational purposes only. Information is compiled from sources deemed reliable but is subject to errors, omissions, changes in price, condition, sale, or withdrawal without notice. No statement is made as to the accuracy of any description. All measurements and square footages are approximate. This is not intended to solicit property already listed. Nothing herein shall be construed as legal, accounting or other professional advice outside the realm of real estate brokerage.



60-05 264TH ST

Little Neck

TYPE	TOWNHOUSE	STATUS	CONTRACT	ASK	\$1,468,000	INITIAL	\$1,468,000
SQFT	2,457	PPSF	\$597	BEDS	4	BATHS	3
FEES	\$1,078	DOM	44				



14-41 BURTON ST

Beechhurst

TYPE	TOWNHOUSE	STATUS	CONTRACT	ASK	\$1,390,888	INITIAL	\$1,390,888
SQFT	1,300	PPSF	\$1,070	BEDS	4	BATHS	3
FEES	\$975	DOM	30				



48-21 28TH AVE

Astoria

TYPE	TOWNHOUSE	STATUS	CONTRACT	ASK	\$1,388,000	INITIAL	\$1,388,000
SQFT	1,755	PPSF	\$791	BEDS	3	BATHS	2
FEES	N/A	DOM	37				



45-30 PEARSON ST #PH4D

Long Island City

TYPE	CONDO	STATUS	CONTRACT	ASK	\$1,315,000	INITIAL	\$1,295,000
SQFT	771	PPSF	\$1,706	BEDS	1	BATHS	1
FEES	\$1,211	DOM	343				



102-37 68TH AVE

Forest Hills

TYPE	TOWNHOUSE	STATUS	CONTRACT	ASK	\$1,268,000	INITIAL	\$1,299,000
SQFT	1,513	PPSF	\$839	BEDS	3	BATHS	2.5
FEES	\$805	DOM	645				



146-11 DELAWARE AVE

Flushing

TYPE	TOWNHOUSE	STATUS	CONTRACT	ASK	\$1,250,000	INITIAL	\$1,428,000
SQFT	1,802	PPSF	\$694	BEDS	4	BATHS	1
FEES	\$771	DOM	N/A				

Compass is a licensed real estate broker and abides by Equal Housing Opportunity laws. All material presented herein is intended for informational purposes only. Information is compiled from sources deemed reliable but is subject to errors, omissions, changes in price, condition, sale, or withdrawal without notice. No statement is made as to the accuracy of any description. All measurements and square footages are approximate. This is not intended to solicit property already listed. Nothing herein shall be construed as legal, accounting or other professional advice outside the realm of real estate brokerage.