

**FEB 6 - 12, 2023**

The Queens luxury real estate market, defined as all properties priced \$1M and above, saw 32 contracts signed this week, made up of 2 condos, and 30 houses. The previous week saw 31 deals. For more information or data, please reach out to a Compass agent.

**\$1,367,906**

Average Asking Price

**\$1,288,500**

Median Asking Price

**\$722**

Average PPSF

**4%**

Average Discount

**\$43,772,988**

Total Volume

**102**

Average Days On Market

5 Dartmouth Street in Forest Hills entered contract this week, with a last asking price of \$3,250,000. Built in 1910, this house spans 3,112 square feet with 4 beds and 3 full baths. It features oak floors throughout, stained glass windows, ceiling moldings, arched doorways, a wood-burning fireplace, a sun room, a primary bedroom with vaulted ceiling, oversized windows, an attached garage, central air conditioning, and much more.

Also signed this week was 116-33 Union Turnpike in Forest Hills, with a last asking price of \$1,895,000. Built in 1920, this stucco and brick home spans 2,472 square feet with 4 beds and 2 full baths. It features hardwood floors, wood-burning fireplaces, large windows, a kitchen with floor-to-ceiling backsplash and high-end cabinetry, a landscaped garden, spacious, spa-like bathrooms, and much more.

**2**

Condo Deal(s)

**0**

Co-op Deal(s)

**30**

Townhouse Deal(s)

**\$1,362,000**

Average Asking Price

**\$0**

Average Asking Price

**\$1,368,300**

Average Asking Price

**\$1,362,000**

Median Asking Price

**\$0**

Median Asking Price

**\$1,264,500**

Median Asking Price

**\$1,276**

Average PPSF

**N/A**

Average PPSF

**\$683**

Average PPSF

**1,068**

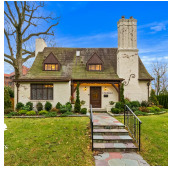
Average SqFt

**N/A**

Average SqFt

**2,186**

Average SqFt



### 5 DARTMOUTH ST

Forest Hills

Type	Townhouse	Status	Contract
SqFt	3,112	Beds	4
PPSF	\$1,045	Fees	\$1,874

Ask	\$3,250,000
Baths	3.5
DOM	22



### 116-33 UNION TURNPIKE

Forest Hills

Type	Townhouse	Status	Contract
SqFt	2,472	Beds	4
PPSF	\$767	Fees	\$1,094

Ask	\$1,895,000
Baths	2.5
DOM	157



### 111-37 76TH AVE

Forest Hills

Type	Townhouse	Status	Contract
SqFt	2,450	Beds	4
PPSF	\$714	Fees	\$1,041

Ask	\$1,749,000
Baths	3
DOM	25

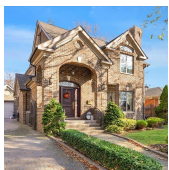


### 144-59 SOUTH DR

Whitestone

Type	Townhouse	Status	Contract
SqFt	1,197	Beds	4
PPSF	\$1,404	Fees	\$903

Ask	\$1,680,000
Baths	4
DOM	146

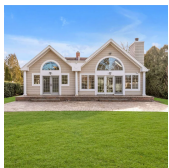


### 53-47 199TH ST

Auburndale

Type	Townhouse	Status	Contract
SqFt	2,580	Beds	4
PPSF	\$633	Fees	\$1,072

Ask	\$1,632,000
Baths	2
DOM	90



### 251-47 THORNHILL AVE

Little Neck

Type	Townhouse	Status	Contract
SqFt	2,604	Beds	5
PPSF	\$614	Fees	\$1,322

Ask	\$1,598,000
Baths	2
DOM	28

Compass is a licensed real estate broker and abides by Equal Housing Opportunity laws. All material presented herein is intended for informational purposes only. Information is compiled from sources deemed reliable but is subject to errors, omissions, changes in price, condition, sale, or withdrawal without notice. No statement is made as to the accuracy of any description. All measurements and square footages are approximate. This is not intended to solicit property already listed. Nothing herein shall be construed as legal, accounting or other professional advice outside the realm of real estate brokerage.





### 70-05 FLEET ST

<b>Type</b>	Townhouse	<b>Status</b>	Contract
<b>Sqft</b>	2,035	<b>Beds</b>	3
<b>PPSF</b>	\$737	<b>Fees</b>	\$1,030

### Forest Hills

<b>Ask</b>	\$1,499,000
<b>Baths</b>	3
<b>DOM</b>	210



### 24-16 26TH ST

<b>Type</b>	Townhouse	<b>Status</b>	Contract
<b>Sqft</b>	N/A	<b>Beds</b>	5
<b>PPSF</b>	N/A	<b>Fees</b>	\$794

### Astoria

<b>Ask</b>	\$1,469,000
<b>Baths</b>	2
<b>DOM</b>	32



### 11-25 45TH AVE #4B

<b>Type</b>	Condo	<b>Status</b>	Contract
<b>Sqft</b>	1,085	<b>Beds</b>	2
<b>PPSF</b>	\$1,313	<b>Fees</b>	\$783

### Long Island City

<b>Ask</b>	\$1,425,000
<b>Baths</b>	2
<b>DOM</b>	41



### 133-31 145TH ST

<b>Type</b>	Townhouse	<b>Status</b>	Contract
<b>Sqft</b>	2,613	<b>Beds</b>	7
<b>PPSF</b>	\$536	<b>Fees</b>	\$461

### Jamaica

<b>Ask</b>	\$1,399,990
<b>Baths</b>	5
<b>DOM</b>	37



### 22-41 HARMAN ST

<b>Type</b>	Townhouse	<b>Status</b>	Contract
<b>Sqft</b>	3,240	<b>Beds</b>	5
<b>PPSF</b>	\$425	<b>Fees</b>	\$636

### Ridgewood

<b>Ask</b>	\$1,375,000
<b>Baths</b>	2.5
<b>DOM</b>	77



### 30-70 41ST ST

<b>Type</b>	Townhouse	<b>Status</b>	Contract
<b>Sqft</b>	2,500	<b>Beds</b>	7
<b>PPSF</b>	\$520	<b>Fees</b>	\$613

### Astoria

<b>Ask</b>	\$1,300,000
<b>Baths</b>	2
<b>DOM</b>	27

Compass is a licensed real estate broker and abides by Equal Housing Opportunity laws. All material presented herein is intended for informational purposes only. Information is compiled from sources deemed reliable but is subject to errors, omissions, changes in price, condition, sale, or withdrawal without notice. No statement is made as to the accuracy of any description. All measurements and square footages are approximate. This is not intended to solicit property already listed. Nothing herein shall be construed as legal, accounting or other professional advice outside the realm of real estate brokerage.



### 78-43 85TH ST

<b>Type</b>	Townhouse	<b>Status</b>	Contract
<b>Sqft</b>	2,342	<b>Beds</b>	10
<b>PPSF</b>	\$555	<b>Fees</b>	\$655

### Glendale

<b>Ask</b>	\$1,299,999
<b>Baths</b>	6
<b>DOM</b>	134



### 21-45 44TH DR #6F

<b>Type</b>	Condo	<b>Status</b>	Contract
<b>Sqft</b>	1,050	<b>Beds</b>	2
<b>PPSF</b>	\$1,238	<b>Fees</b>	\$1,429

### Hunters Point

<b>Ask</b>	\$1,299,000
<b>Baths</b>	2
<b>DOM</b>	123



### 73-79 PARK DR EAST

<b>Type</b>	Townhouse	<b>Status</b>	Contract
<b>Sqft</b>	1,176	<b>Beds</b>	3
<b>PPSF</b>	\$1,105	<b>Fees</b>	\$772

### Kew Gardens Hills

<b>Ask</b>	\$1,299,000
<b>Baths</b>	3
<b>DOM</b>	192



### 148-31 REEVES AVE

<b>Type</b>	Townhouse	<b>Status</b>	Contract
<b>Sqft</b>	1,582	<b>Beds</b>	4
<b>PPSF</b>	\$820	<b>Fees</b>	\$726

### Queensboro Hill

<b>Ask</b>	\$1,298,000
<b>Baths</b>	3
<b>DOM</b>	205

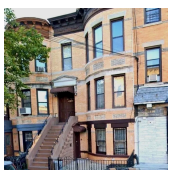


### 73-19 53RD AVE

<b>Type</b>	Townhouse	<b>Status</b>	Contract
<b>Sqft</b>	2,300	<b>Beds</b>	5
<b>PPSF</b>	\$556	<b>Fees</b>	\$801

### Maspeth

<b>Ask</b>	\$1,279,000
<b>Baths</b>	3
<b>DOM</b>	19



### 60-97 70TH AVE

<b>Type</b>	Townhouse	<b>Status</b>	Contract
<b>Sqft</b>	N/A	<b>Beds</b>	7
<b>PPSF</b>	N/A	<b>Fees</b>	\$585

### Ridgewood

<b>Ask</b>	\$1,250,000
<b>Baths</b>	3
<b>DOM</b>	7

Compass is a licensed real estate broker and abides by Equal Housing Opportunity laws. All material presented herein is intended for informational purposes only. Information is compiled from sources deemed reliable but is subject to errors, omissions, changes in price, condition, sale, or withdrawal without notice. No statement is made as to the accuracy of any description. All measurements and square footages are approximate. This is not intended to solicit property already listed. Nothing herein shall be construed as legal, accounting or other professional advice outside the realm of real estate brokerage.



### 53-57 70TH ST

Type	Townhouse	Status	Contract
Sqft	3,364	Beds	5
PPSF	\$357	Fees	\$709

### Maspeth

Ask	\$1,200,000
Baths	2
DOM	110

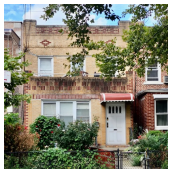


### 54-15 152ND ST

Type	Townhouse	Status	Contract
Sqft	1,260	Beds	4
PPSF	\$952	Fees	\$492

### Queensboro Hill

Ask	\$1,199,999
Baths	3
DOM	145

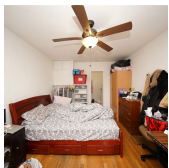


### 25-07 23RD AVE

Type	Townhouse	Status	Contract
Sqft	1,344	Beds	2
PPSF	\$889	Fees	\$639

### Astoria

Ask	\$1,195,000
Baths	2
DOM	164



### 54-36 153RD ST

Type	Townhouse	Status	Contract
Sqft	1,505	Beds	5
PPSF	\$789	Fees	\$556

### Queensboro Hill

Ask	\$1,188,000
Baths	4
DOM	259

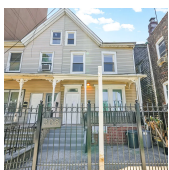


### 62-20 138TH ST

Type	Townhouse	Status	Contract
Sqft	1,304	Beds	4
PPSF	\$905	Fees	\$373

### Queensboro Hill

Ask	\$1,180,000
Baths	2
DOM	73



### 3-08 26TH AVE

Type	Townhouse	Status	Contract
Sqft	1,350	Beds	5
PPSF	\$836	Fees	\$229

### Astoria

Ask	\$1,128,000
Baths	2
DOM	40

Compass is a licensed real estate broker and abides by Equal Housing Opportunity laws. All material presented herein is intended for informational purposes only. Information is compiled from sources deemed reliable but is subject to errors, omissions, changes in price, condition, sale, or withdrawal without notice. No statement is made as to the accuracy of any description. All measurements and square footages are approximate. This is not intended to solicit property already listed. Nothing herein shall be construed as legal, accounting or other professional advice outside the realm of real estate brokerage.



### 33-69 13TH ST

<b>Type</b>	Townhouse	<b>Status</b>	Contract
<b>Sqft</b>	2,301	<b>Beds</b>	5
<b>PPSF</b>	\$489	<b>Fees</b>	\$684

### Astoria

<b>Ask</b>	\$1,125,000
<b>Baths</b>	3
<b>DOM</b>	113



### 159-03 102ND ST

<b>Type</b>	Townhouse	<b>Status</b>	Contract
<b>Sqft</b>	3,100	<b>Beds</b>	4
<b>PPSF</b>	\$355	<b>Fees</b>	\$375

### Old Howard Beach

<b>Ask</b>	\$1,100,000
<b>Baths</b>	3
<b>DOM</b>	92



### 34-55 9TH ST

<b>Type</b>	Townhouse	<b>Status</b>	Contract
<b>Sqft</b>	1,974	<b>Beds</b>	4
<b>PPSF</b>	\$552	<b>Fees</b>	\$460

### Astoria

<b>Ask</b>	\$1,088,000
<b>Baths</b>	2
<b>DOM</b>	209

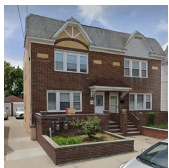


### 40-04 248TH ST

<b>Type</b>	Townhouse	<b>Status</b>	Contract
<b>Sqft</b>	2,300	<b>Beds</b>	4
<b>PPSF</b>	\$473	<b>Fees</b>	\$977

### Little Neck

<b>Ask</b>	\$1,088,000
<b>Baths</b>	3
<b>DOM</b>	32

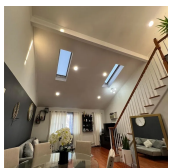


### 147-26 24TH AVE

<b>Type</b>	Townhouse	<b>Status</b>	Contract
<b>Sqft</b>	1,395	<b>Beds</b>	3
<b>PPSF</b>	\$774	<b>Fees</b>	\$625

### Whitestone

<b>Ask</b>	\$1,080,000
<b>Baths</b>	2
<b>DOM</b>	60



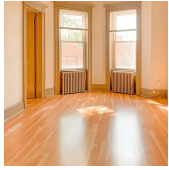
### 109-05 95TH AVE

<b>Type</b>	Townhouse	<b>Status</b>	Contract
<b>Sqft</b>	3,460	<b>Beds</b>	6
<b>PPSF</b>	\$312	<b>Fees</b>	\$725

### Richmond Hill

<b>Ask</b>	\$1,079,000
<b>Baths</b>	4
<b>DOM</b>	281

Compass is a licensed real estate broker and abides by Equal Housing Opportunity laws. All material presented herein is intended for informational purposes only. Information is compiled from sources deemed reliable but is subject to errors, omissions, changes in price, condition, sale, or withdrawal without notice. No statement is made as to the accuracy of any description. All measurements and square footages are approximate. This is not intended to solicit property already listed. Nothing herein shall be construed as legal, accounting or other professional advice outside the realm of real estate brokerage.



### 20-41 HIMROD ST

**Type** Townhouse  
**Sqft** 2,138  
**PPSF** \$503

**Status** Contract  
**Beds** 5  
**Fees** \$560

### Ridgewood

**Ask** \$1,075,000  
**Baths** 3  
**DOM** 66



### 243-03 73RD AVE

**Type** Townhouse  
**Sqft** 2,184  
**PPSF** \$481

**Status** Contract  
**Beds** 6  
**Fees** \$921

### Douglaston

**Ask** \$1,050,000  
**Baths** 4  
**DOM** 32

Compass is a licensed real estate broker and abides by Equal Housing Opportunity laws. All material presented herein is intended for informational purposes only. Information is compiled from sources deemed reliable but is subject to errors, omissions, changes in price, condition, sale, or withdrawal without notice. No statement is made as to the accuracy of any description. All measurements and square footages are approximate. This is not intended to solicit property already listed. Nothing herein shall be construed as legal, accounting or other professional advice outside the realm of real estate brokerage.

© 2020 Compass. This report and information provided in this report are proprietary to Compass and may not be sold, used or reprinted, in whole or in part, without the prior written consent in each instance of Compass. Data is subject to revision. Sourced from Compass proprietary database. All rights reserved.

[compass.com](https://www.compass.com)