

JAN 23 - 29, 2023

The Queens luxury real estate market, defined as all properties priced \$1M and above, saw 33 contracts signed this week, made up of 7 condos, 1 coop, and 25 houses. The previous week saw 27 deals. For more information or data, please reach out to a Compass agent.

\$1,270,606

Average Asking Price

\$1,235,000

Median Asking Price

\$826

Average PPSF

4%

Average Discount

\$41,929,978

Total Volume

99

Average Days On Market

Unit 2402 at The Harrison, located at 27-21 44th Drive in Hunters Point, entered contract this week, with a last asking price of \$2,050,000. Built in 2017, this high-floor condo unit spans 1,261 square feet with 3 beds and 2 full baths. It features a private terrace, triple exposures, panoramic views, a kitchen with high-end appliances and quartz countertops, marble and porcelain bathrooms, and much more. The building provides a lounge roof terrace, bike storage, a 24-hour attended lobby and concierge, and many other amenities.

Also signed this week was PH1A at The Greene, located at 45-30 Pearson Street in Hunters Point, with a last asking price of \$1,900,000. Built in 2022, this penthouse condo unit spans 1,227 square feet with 2 beds and 2 full baths. It features an open-plan living room, dining room, and kitchen, white oak engineered floors, multi-zone heating and cooling, stone surfaces and wood accents, an eat-in kitchen, and much more. The building provides a 24-hour doorman, a live-in super, bicycle, cold, and package storage, a rooftop terrace, and many other amenities.

7

Condo Deal(s)

1

Co-op Deal(s)

25

Townhouse Deal(s)

\$1,459,885

Average Asking Price

\$1,150,000

Average Asking Price

\$1,222,432

Average Asking Price

\$1,366,426

Median Asking Price

\$1,150,000

Median Asking Price

\$1,200,000

Median Asking Price

\$1,498

Average PPSF

\$885

Average PPSF

\$609

Average PPSF

989

Average SqFt

1,300

Average SqFt

2,179

Average SqFt



27-21 44TH DR #2402

Hunters Point

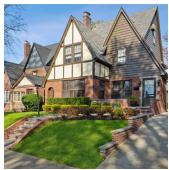
Type	Condo	Status	Contract	Ask	\$2,050,000
SqFt	1,261	Beds	3	Baths	2
PPSF	\$1,626	Fees	\$1,700	DOM	50



45-30 PEARSON ST #PH1A

Hunters Point

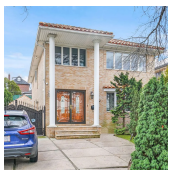
Type	Condo	Status	Contract	Ask	\$1,900,000
SqFt	1,227	Beds	2	Baths	2
PPSF	\$1,549	Fees	\$2,129	DOM	1



84-07 KENT ST

Jamaica Estates

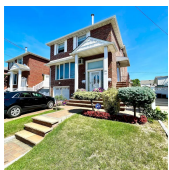
Type	Townhouse	Status	Contract	Ask	\$1,578,000
SqFt	2,413	Beds	4	Baths	2
PPSF	\$654	Fees	\$1,109	DOM	64



147-40 8TH AVE

Whitestone

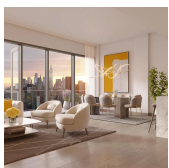
Type	Townhouse	Status	Contract	Ask	\$1,498,888
SqFt	2,460	Beds	4	Baths	2
PPSF	\$609	Fees	\$992	DOM	N/A



164-17 95TH ST

Old Howard Beach

Type	Townhouse	Status	Contract	Ask	\$1,437,000
SqFt	3,500	Beds	6	Baths	3
PPSF	\$411	Fees	\$601	DOM	146



45-30 PEARSON ST #10C

Hunters Point

Type	Condo	Status	Contract	Ask	\$1,420,000
SqFt	947	Beds	2	Baths	2
PPSF	\$1,499	Fees	\$1,622	DOM	72

Compass is a licensed real estate broker and abides by Equal Housing Opportunity laws. All material presented herein is intended for informational purposes only. Information is compiled from sources deemed reliable but is subject to errors, omissions, changes in price, condition, sale, or withdrawal without notice. No statement is made as to the accuracy of any description. All measurements and square footages are approximate. This is not intended to solicit property already listed. Nothing herein shall be construed as legal, accounting or other professional advice outside the realm of real estate brokerage.



66-27 53RD AVE

Type	Townhouse	Status	Contract
Sqft	1,946	Beds	6
PPSF	\$709	Fees	\$918

Maspeth

Ask	\$1,380,000
Baths	3
DOM	35



3 CT SQ #1403

Type	Condo	Status	Contract
Sqft	992	Beds	2
PPSF	\$1,378	Fees	\$2,185

Hunters Point

Ask	\$1,366,426
Baths	2
DOM	248

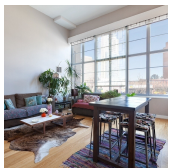


72-66 YELLOWSTONE BLVD

Type	Townhouse	Status	Contract
Sqft	2,970	Beds	5
PPSF	\$458	Fees	\$694

Rego Park

Ask	\$1,360,000
Baths	5
DOM	80



27-28 THOMPSON AVE #242

Type	Condo	Status	Contract
Sqft	1,178	Beds	1
PPSF	\$1,104	Fees	\$934

Hunters Point

Ask	\$1,300,000
Baths	1
DOM	106

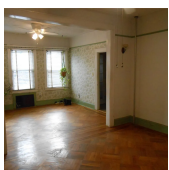


28-15 50TH ST

Type	Townhouse	Status	Contract
Sqft	2,024	Beds	4
PPSF	\$642	Fees	\$950

Woodside

Ask	\$1,299,999
Baths	2
DOM	23



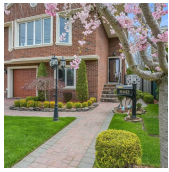
23-80 35TH ST

Type	Townhouse	Status	Contract
Sqft	2,836	Beds	3
PPSF	\$458	Fees	\$775

Astoria

Ask	\$1,298,000
Baths	2
DOM	11

Compass is a licensed real estate broker and abides by Equal Housing Opportunity laws. All material presented herein is intended for informational purposes only. Information is compiled from sources deemed reliable but is subject to errors, omissions, changes in price, condition, sale, or withdrawal without notice. No statement is made as to the accuracy of any description. All measurements and square footages are approximate. This is not intended to solicit property already listed. Nothing herein shall be construed as legal, accounting or other professional advice outside the realm of real estate brokerage.



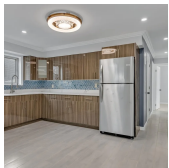
164-43 87TH ST

Howard Beach

Type Townhouse
Sqft 2,300
PPSF \$554

Status Contract
Beds 5
Fees \$745

Ask \$1,275,000
Baths 4
DOM 196



133-16 131ST AVE # 2

South Ozone Park

Type Townhouse
Sqft 2,250
PPSF \$564

Status Contract
Beds 9
Fees \$602

Ask \$1,269,000
Baths 5
DOM 14



47-16 244TH ST

Douglaston

Type Townhouse
Sqft 1,560
PPSF \$802

Status Contract
Beds 3
Fees N/A

Ask \$1,250,000
Baths 2
DOM 14



57-21 224TH ST

Bayside

Type Townhouse
Sqft 2,352
PPSF \$531

Status Contract
Beds 5
Fees \$898

Ask \$1,250,000
Baths 3
DOM 83



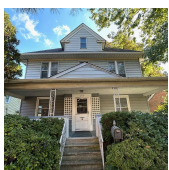
23-02 23RD AVE

Astoria

Type Townhouse
Sqft 2,000
PPSF \$618

Status Contract
Beds 3
Fees \$3,800

Ask \$1,235,000
Baths 1
DOM 85



35-19 156TH ST

Murray Hill

Type Townhouse
Sqft 2,120
PPSF \$566

Status Contract
Beds 7
Fees \$655

Ask \$1,200,000
Baths 3
DOM 94

Compass is a licensed real estate broker and abides by Equal Housing Opportunity laws. All material presented herein is intended for informational purposes only. Information is compiled from sources deemed reliable but is subject to errors, omissions, changes in price, condition, sale, or withdrawal without notice. No statement is made as to the accuracy of any description. All measurements and square footages are approximate. This is not intended to solicit property already listed. Nothing herein shall be construed as legal, accounting or other professional advice outside the realm of real estate brokerage.



35-14 172ND ST

Murray Hill

Type	Townhouse	Status	Contract
Sqft	1,324	Beds	4
PPSF	\$906	Fees	\$762

Ask	\$1,199,900
Baths	3
DOM	86



69-62 CALDWELL AVE

Maspeth

Type	Townhouse	Status	Contract
Sqft	1,752	Beds	3
PPSF	\$684	Fees	\$600

Ask	\$1,198,000
Baths	1
DOM	88



233-18 38TH DR

Douglaston

Type	Townhouse	Status	Contract
Sqft	1,591	Beds	3
PPSF	\$748	Fees	\$681

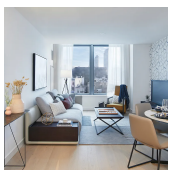
Ask	\$1,190,000
Baths	2
DOM	183

35-50 77 ST #41

Jackson Heights

Type	Coop	Status	Contract
Sqft	1,300	Beds	3
PPSF	\$885	Fees	\$800

Ask	\$1,150,000
Baths	2
DOM	68



3 CT SQ #5304

Hunters Point

Type	Condo	Status	Contract
Sqft	635	Beds	1
PPSF	\$1,761	Fees	\$1,376

Ask	\$1,117,765
Baths	1
DOM	N/A



33-18 76TH ST

Jackson Heights

Type	Townhouse	Status	Contract
Sqft	N/A	Beds	3
PPSF	N/A	Fees	\$561

Ask	\$1,100,000
Baths	2
DOM	75

Compass is a licensed real estate broker and abides by Equal Housing Opportunity laws. All material presented herein is intended for informational purposes only. Information is compiled from sources deemed reliable but is subject to errors, omissions, changes in price, condition, sale, or withdrawal without notice. No statement is made as to the accuracy of any description. All measurements and square footages are approximate. This is not intended to solicit property already listed. Nothing herein shall be construed as legal, accounting or other professional advice outside the realm of real estate brokerage.



217-30 138TH RD

Type	Townhouse	Status	Contract
Sqft	4,000	Beds	6
PPSF	\$275	Fees	\$295

Laurelton

Ask	\$1,100,000
Baths	5
DOM	57



163-14 24TH RD

Type	Townhouse	Status	Contract
Sqft	2,100	Beds	3
PPSF	\$523	Fees	\$919

Flushing

Ask	\$1,099,000
Baths	1
DOM	169



67-12 48TH AVE

Type	Townhouse	Status	Contract
Sqft	1,406	Beds	4
PPSF	\$775	Fees	\$661

Maspeth

Ask	\$1,090,000
Baths	3
DOM	94

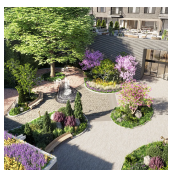


150-33 60TH AVE

Type	Townhouse	Status	Contract
Sqft	N/A	Beds	3
PPSF	N/A	Fees	\$589

Queensboro Hill

Ask	\$1,068,000
Baths	2
DOM	176

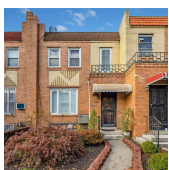


45-30 PEARSON ST #12B

Type	Condo	Status	Contract
Sqft	681	Beds	1
PPSF	\$1,564	Fees	\$1,139

Hunters Point

Ask	\$1,065,000
Baths	1
DOM	46



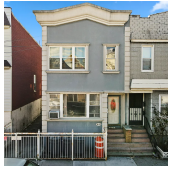
79-29 ELKS RD

Type	Townhouse	Status	Contract
Sqft	1,480	Beds	4
PPSF	\$715	Fees	\$680

Elmhurst

Ask	\$1,058,000
Baths	2
DOM	69

Compass is a licensed real estate broker and abides by Equal Housing Opportunity laws. All material presented herein is intended for informational purposes only. Information is compiled from sources deemed reliable but is subject to errors, omissions, changes in price, condition, sale, or withdrawal without notice. No statement is made as to the accuracy of any description. All measurements and square footages are approximate. This is not intended to solicit property already listed. Nothing herein shall be construed as legal, accounting or other professional advice outside the realm of real estate brokerage.



60-70 60TH LN

Type	Townhouse	Status	Contract
Sqft	N/A	Beds	6
PPSF	N/A	Fees	\$595

Maspeth

Ask	\$1,050,000
Baths	2
DOM	425



62-31 69TH PL

Type	Townhouse	Status	Contract
Sqft	1,970	Beds	4
PPSF	\$532	Fees	\$660

Middle Village

Ask	\$1,048,000
Baths	2
DOM	96



101-23 75TH RD

Type	Townhouse	Status	Contract
Sqft	1,568	Beds	3
PPSF	\$657	Fees	\$642

Forest Hills

Ask	\$1,029,000
Baths	2
DOM	N/A

Compass is a licensed real estate broker and abides by Equal Housing Opportunity laws. All material presented herein is intended for informational purposes only. Information is compiled from sources deemed reliable but is subject to errors, omissions, changes in price, condition, sale, or withdrawal without notice. No statement is made as to the accuracy of any description. All measurements and square footages are approximate. This is not intended to solicit property already listed. Nothing herein shall be construed as legal, accounting or other professional advice outside the realm of real estate brokerage.