

JAN 16 - 22, 2023

The Queens luxury real estate market, defined as all properties priced \$1M and above, saw 27 contracts signed this week, made up of 6 condos, and 21 houses. The previous week saw 28 deals. For more information or data, please reach out to a Compass agent.

\$1,332,848

Average Asking Price

\$1,315,000

Median Asking Price

\$792

Average PPSF

3%

Average Discount

\$35,986,887

Total Volume

89

Average Days On Market

134-32 58th Road in Queensboro Hill entered contract this week, with a last asking price of \$1,799,000. Originally built in 1925, this home spans 2,362 square feet on a 48.5-by-100-foot lot, with 4 beds and 3 full baths. It features a detached 2-story garage, a back patio and garden area, hardwood floors, large open rooms, wood doors, and much more.

Also signed this week was Unit 3A at 10-64 Jackson Avenue in Hunters Point, with a last asking price of \$1,598,000. This new development condo spans 1,360 square feet with 3 beds and 2 full baths. It features 10-foot ceilings, recessed lighting, 8-foot doors, double-paned floor-to-ceiling windows, wide-plank oak floors, a custom kitchen with quartz countertops and high-end appliances, a primary bedroom with southern views and private balcony, radiant heated floors, and much more. The building provides a fitness center, a furnished roof deck with skyline views, a children's play area, a doorman, and many other amenities.

6

Condo Deal(s)

0

Co-op Deal(s)

21

Townhouse Deal(s)

\$1,320,000

Average Asking Price

\$0

Average Asking Price

\$1,336,519

Average Asking Price

\$1,282,000

Median Asking Price

\$0

Median Asking Price

\$1,349,999

Median Asking Price

\$1,334

Average PPSF

N/A

Average PPSF

\$642

Average PPSF

1,021

Average SqFt

N/A

Average SqFt

2,401

Average SqFt



134-32 58TH RD

Queensboro Hill

Type	Townhouse	Status	Contract
SqFt	2,362	Beds	4
PPSF	\$762	Fees	\$859

Ask	\$1,799,000
Baths	3
DOM	93



10-64 JACKSON AVE #3A

Hunters Point

Type	Condo	Status	Contract
SqFt	1,360	Beds	3
PPSF	\$1,175	Fees	\$2,570

Ask	\$1,598,000
Baths	2
DOM	251



80-92 TRYON PL

Jamaica Estates

Type	Townhouse	Status	Contract
SqFt	6,200	Beds	6
PPSF	\$258	Fees	\$904

Ask	\$1,598,000
Baths	3
DOM	123

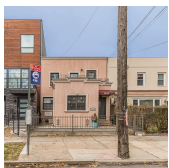


195-32 37TH AVE

Auburndale

Type	Townhouse	Status	Contract
SqFt	2,450	Beds	6
PPSF	\$640	Fees	\$858

Ask	\$1,568,000
Baths	2
DOM	112



22-66 21ST ST

Astoria

Type	Townhouse	Status	Contract
SqFt	N/A	Beds	4
PPSF	N/A	Fees	\$657

Ask	\$1,535,000
Baths	3
DOM	119



220-10 40TH AVE

Bayside

Type	Townhouse	Status	Contract
SqFt	2,800	Beds	6
PPSF	\$532	Fees	\$744

Ask	\$1,488,888
Baths	3.5
DOM	32

Compass is a licensed real estate broker and abides by Equal Housing Opportunity laws. All material presented herein is intended for informational purposes only. Information is compiled from sources deemed reliable but is subject to errors, omissions, changes in price, condition, sale, or withdrawal without notice. No statement is made as to the accuracy of any description. All measurements and square footages are approximate. This is not intended to solicit property already listed. Nothing herein shall be construed as legal, accounting or other professional advice outside the realm of real estate brokerage.



14-57 155TH ST

Type	Townhouse	Status	Contract
Sqft	2,736	Beds	5
PPSF	\$544	Fees	\$976

Beechhurst

Ask	\$1,488,000
Baths	3
DOM	146



76-03 264TH ST

Type	Townhouse	Status	Contract
Sqft	2,400	Beds	4
PPSF	\$615	Fees	\$500

Glen Oaks

Ask	\$1,475,000
Baths	4
DOM	90

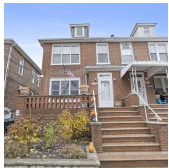


115-30 PARK LANE SOUTH

Type	Townhouse	Status	Contract
Sqft	2,680	Beds	6
PPSF	\$533	Fees	\$1,119

Kew Gardens

Ask	\$1,428,000
Baths	3
DOM	17



12-30 116TH ST

Type	Townhouse	Status	Contract
Sqft	2,240	Beds	5
PPSF	\$620	Fees	\$700

College Point

Ask	\$1,388,000
Baths	4
DOM	40

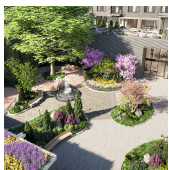


84-04 54TH AVE

Type	Townhouse	Status	Contract
Sqft	1,800	Beds	6
PPSF	\$766	Fees	\$621

Nassau Heights

Ask	\$1,379,000
Baths	3
DOM	322



45-30 PEARSON ST #8C

Type	Condo	Status	Contract
Sqft	947	Beds	2
PPSF	\$1,437	Fees	\$1,588

Hunters Point

Ask	\$1,360,000
Baths	2
DOM	1

Compass is a licensed real estate broker and abides by Equal Housing Opportunity laws. All material presented herein is intended for informational purposes only. Information is compiled from sources deemed reliable but is subject to errors, omissions, changes in price, condition, sale, or withdrawal without notice. No statement is made as to the accuracy of any description. All measurements and square footages are approximate. This is not intended to solicit property already listed. Nothing herein shall be construed as legal, accounting or other professional advice outside the realm of real estate brokerage.



64-30 74TH ST

Middle Village

Type	Townhouse	Status	Contract
Sqft	1,980	Beds	5
PPSF	\$682	Fees	\$941

Ask	\$1,349,999
Baths	3
DOM	13

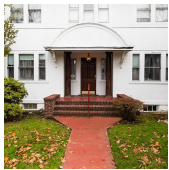


45-30 PEARSON ST #7D

Hunters Point

Type	Condo	Status	Contract
Sqft	873	Beds	2
PPSF	\$1,507	Fees	\$1,489

Ask	\$1,315,000
Baths	2
DOM	1



14-47 157TH ST

Beechhurst

Type	Townhouse	Status	Contract
Sqft	1,740	Beds	4
PPSF	\$747	Fees	\$890

Ask	\$1,300,000
Baths	1
DOM	43

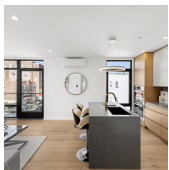


33-26 150TH PL

Flushing

Type	Townhouse	Status	Contract
Sqft	1,986	Beds	5
PPSF	\$645	Fees	\$829

Ask	\$1,280,000
Baths	2.5
DOM	45

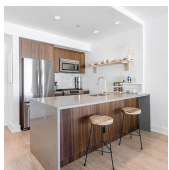


20-48 STEINWAY ST #3A

Astoria

Type	Condo	Status	Contract
Sqft	972	Beds	2
PPSF	\$1,285	Fees	\$1,047

Ask	\$1,249,000
Baths	2
DOM	105



5-27 51ST AVE #3C

Hunters Point

Type	Condo	Status	Contract
Sqft	950	Beds	2
PPSF	\$1,264	Fees	\$825

Ask	\$1,200,000
Baths	2
DOM	N/A

Compass is a licensed real estate broker and abides by Equal Housing Opportunity laws. All material presented herein is intended for informational purposes only. Information is compiled from sources deemed reliable but is subject to errors, omissions, changes in price, condition, sale, or withdrawal without notice. No statement is made as to the accuracy of any description. All measurements and square footages are approximate. This is not intended to solicit property already listed. Nothing herein shall be construed as legal, accounting or other professional advice outside the realm of real estate brokerage.



23-23 30TH RD #5B

Astoria

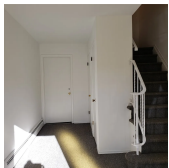
Type	Condo	Status	Contract	Ask	\$1,198,000
Sqft	N/A	Beds	2	Baths	2
PPSF	N/A	Fees	\$1,541	DOM	29



56-30 186TH ST

Auburndale

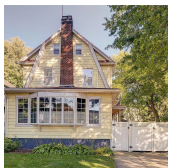
Type	Townhouse	Status	Contract	Ask	\$1,198,000
Sqft	1,120	Beds	4	Baths	3
PPSF	\$1,070	Fees	\$820	DOM	49



240-57 68TH AVE

Douglaston

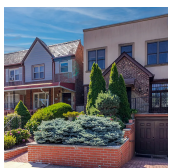
Type	Townhouse	Status	Contract	Ask	\$1,198,000
Sqft	N/A	Beds	4	Baths	4
PPSF	N/A	Fees	\$632	DOM	51



41-39 170TH ST

Flushing

Type	Townhouse	Status	Contract	Ask	\$1,189,000
Sqft	2,308	Beds	5	Baths	2
PPSF	\$515	Fees	\$726	DOM	95



85-60 66TH RD

Rego Park

Type	Townhouse	Status	Contract	Ask	\$1,175,000
Sqft	2,528	Beds	4	Baths	3
PPSF	\$465	Fees	\$629	DOM	168



35-33 100TH ST

North Corona

Type	Townhouse	Status	Contract	Ask	\$1,100,000
Sqft	2,854	Beds	6	Baths	2
PPSF	\$385	Fees	\$686	DOM	103

Compass is a licensed real estate broker and abides by Equal Housing Opportunity laws. All material presented herein is intended for informational purposes only. Information is compiled from sources deemed reliable but is subject to errors, omissions, changes in price, condition, sale, or withdrawal without notice. No statement is made as to the accuracy of any description. All measurements and square footages are approximate. This is not intended to solicit property already listed. Nothing herein shall be construed as legal, accounting or other professional advice outside the realm of real estate brokerage.



146-15 13TH AVE

Type	Townhouse	Status	Contract
Sqft	N/A	Beds	4
PPSF	N/A	Fees	\$585

Whitestone

Ask	\$1,080,000
Baths	2.5
DOM	53



147-30 232ND ST

Type	Townhouse	Status	Contract
Sqft	2,250	Beds	6
PPSF	\$467	Fees	\$544

Springfield Gardens

Ask	\$1,050,000
Baths	4.5
DOM	70



20-34 49TH ST

Type	Townhouse	Status	Contract
Sqft	770	Beds	3
PPSF	\$1,299	Fees	\$333

Astoria

Ask	\$1,000,000
Baths	1
DOM	119

Compass is a licensed real estate broker and abides by Equal Housing Opportunity laws. All material presented herein is intended for informational purposes only. Information is compiled from sources deemed reliable but is subject to errors, omissions, changes in price, condition, sale, or withdrawal without notice. No statement is made as to the accuracy of any description. All measurements and square footages are approximate. This is not intended to solicit property already listed. Nothing herein shall be construed as legal, accounting or other professional advice outside the realm of real estate brokerage.