

SEP 13 - 19, 2021

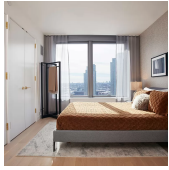
The Long Island City luxury real estate market, defined as all properties priced \$1M and above, saw 10 contracts signed this week, made up of 10 condos. The previous week saw 3 deals. For more information or data, please reach out to a Compass agent.

<b>\$1,327,974</b> Average Asking Price	<b>\$1,353,528</b> Median Asking Price	<b>\$1,574</b> Average PPSF
<b>0%</b> Average Discount	<b>\$13,279,734</b> Total Volume	<b>396</b> Average Days On Market

Unit 1102 at Skyline Tower, located at 3 Court Square in Long Island City, entered contract this week with a last asking price of \$1,572,739. Built in 2019, this condo unit spans 997 square feet with 2 beds and 2 full baths. It features a northwest exposure with Manhattan views, white oak engineered wood flooring, a kitchen with abundant cabinet space, high-end appliances, and a quartz slab countertop and backsplash, a spa-inspired primary bathroom with porcelain tile, and much more. The building provides a state-of-the-art fitness center, a steam room and sauna spa, an amenity lounge with terrace, and more.

Also signed this week was Unit 2101, located at Skyline Tower, with a last asking price of \$1,524,278. This condo unit spans 930 square feet with 2 beds and 2 full bathrooms. With features similar to those noted above, this unit offers a direct west exposure, as well as abundant storage, decorative wall sconces, marble vanities, open glass shelving, and more.

<b>10</b> Condo Deal(s)	<b>0</b> Co-op Deal(s)	<b>0</b> Townhouse Deal(s)
<b>\$1,327,974</b> Average Asking Price	<b>\$0</b> Average Asking Price	<b>\$0</b> Average Asking Price
<b>\$1,353,528</b> Median Asking Price	<b>\$0</b> Median Asking Price	<b>\$0</b> Median Asking Price
<b>\$1,574</b> Average PPSF	<b>N/A</b> Average PPSF	<b>\$0</b> Average PPSF
<b>866</b> Average SqFt	<b>N/A</b> Average SqFt	<b>0</b> Average SqFt

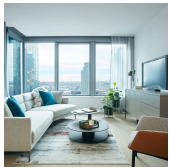


**SKYLINE TOWER (3 CT SQ) #1102**

Hunters Point

<b>Type</b>	Condo	<b>Status</b>	Contract
<b>SqFt</b>	997	<b>Beds</b>	2
<b>PPSF</b>	\$1,578	<b>Fees</b>	\$1,425

<b>Ask</b>	\$1,572,739
<b>Baths</b>	2
<b>DOM</b>	N/A

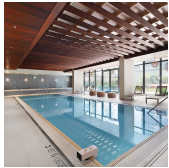


**SKYLINE TOWER (3 CT SQ) #2101**

Hunters Point

<b>Type</b>	Condo	<b>Status</b>	Contract
<b>SqFt</b>	930	<b>Beds</b>	2
<b>PPSF</b>	\$1,640	<b>Fees</b>	\$1,330

<b>Ask</b>	\$1,524,278
<b>Baths</b>	2
<b>DOM</b>	N/A



**GALERIE (22-18 JACKSON AVE) #PH10**

Hunters Point

<b>Type</b>	Condo	<b>Status</b>	Contract
<b>SqFt</b>	1,012	<b>Beds</b>	2
<b>PPSF</b>	\$1,433	<b>Fees</b>	\$2,189

<b>Ask</b>	\$1,450,000
<b>Baths</b>	2
<b>DOM</b>	89

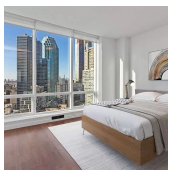


**STAR TOWER (27-17 42 RD) #12A**

Hunters Point

<b>Type</b>	Condo	<b>Status</b>	Contract
<b>SqFt</b>	1,093	<b>Beds</b>	2
<b>PPSF</b>	\$1,263	<b>Fees</b>	\$1,218

<b>Ask</b>	\$1,379,888
<b>Baths</b>	2
<b>DOM</b>	116

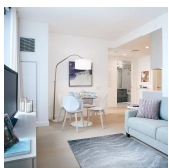


**STAR TOWER (27-17 42 RD) #11A**

Hunters Point

<b>Type</b>	Condo	<b>Status</b>	Contract
<b>SqFt</b>	1,093	<b>Beds</b>	2
<b>PPSF</b>	\$1,254	<b>Fees</b>	\$1,217

<b>Ask</b>	\$1,369,888
<b>Baths</b>	2
<b>DOM</b>	191



**SKYLINE TOWER (3 CT SQ) #2605**

Hunters Point

<b>Type</b>	Condo	<b>Status</b>	Contract
<b>SqFt</b>	932	<b>Beds</b>	2
<b>PPSF</b>	\$1,435	<b>Fees</b>	\$1,325

<b>Ask</b>	\$1,337,168
<b>Baths</b>	2
<b>DOM</b>	N/A

Compass is a licensed real estate broker and abides by Equal Housing Opportunity laws. All material presented herein is intended for informational purposes only. Information is compiled from sources deemed reliable but is subject to errors, omissions, changes in price, condition, sale, or withdrawal without notice. No statement is made as to the accuracy of any description. All measurements and square footages are approximate. This is not intended to solicit property already listed. Nothing herein shall be construed as legal, accounting or other professional advice outside the realm of real estate brokerage.



**SKYLINE TOWER (3 CT SQ) # 3012**

Hunters Point

<b>Type</b>	Condo	<b>Status</b>	Contract	<b>Ask</b>	\$1,299,805
<b>Sqft</b>	672	<b>Beds</b>	1	<b>Baths</b>	1
<b>PPSF</b>	\$1,935	<b>Fees</b>	\$961	<b>DOM</b>	N/A



**SKYLINE TOWER (3 CT SQ) # 1812**

Hunters Point

<b>Type</b>	Condo	<b>Status</b>	Contract	<b>Ask</b>	\$1,215,902
<b>Sqft</b>	672	<b>Beds</b>	1	<b>Baths</b>	1
<b>PPSF</b>	\$1,810	<b>Fees</b>	\$961	<b>DOM</b>	N/A



**SKYLINE TOWER (3 CT SQ) # 4105**

Hunters Point

<b>Type</b>	Condo	<b>Status</b>	Contract	<b>Ask</b>	\$1,087,050
<b>Sqft</b>	624	<b>Beds</b>	1	<b>Baths</b>	1
<b>PPSF</b>	\$1,743	<b>Fees</b>	\$892	<b>DOM</b>	750



**SKYLINE TOWER (3 CT SQ) # 4104**

Hunters Point

<b>Type</b>	Condo	<b>Status</b>	Contract	<b>Ask</b>	\$1,043,016
<b>Sqft</b>	635	<b>Beds</b>	1	<b>Baths</b>	1
<b>PPSF</b>	\$1,643	<b>Fees</b>	\$925	<b>DOM</b>	834

Compass is a licensed real estate broker and abides by Equal Housing Opportunity laws. All material presented herein is intended for informational purposes only. Information is compiled from sources deemed reliable but is subject to errors, omissions, changes in price, condition, sale, or withdrawal without notice. No statement is made as to the accuracy of any description. All measurements and square footages are approximate. This is not intended to solicit property already listed. Nothing herein shall be construed as legal, accounting or other professional advice outside the realm of real estate brokerage.