

JUNE 28 - JULY 5, 2021

The Long Island City luxury real estate market, defined as all properties priced \$1M and above, saw 22 contracts signed this week, made up of 22 condos. The previous week saw 13 deals.

\$1,518,328	\$1,599,750	\$1,528
Average Asking Price	Median Asking Price	Average PPSF
3%	\$33,403,198	292
Average Discount	Total Volume	Average Days On Market

Unit 5B at The Galaxy, located at 5-03 50th Ave in Hunters Point, entered contract this week, with a last asking price of \$1,975,000. Built in 2006, this condo spans 1,697 square feet with 3 beds and 2 baths. It features 11-foot ceilings, Mahogany hardwood flooring, extensive cabinet and closet storage, Georgian-style sash oversized windows with southwestern exposure, an in-unit washer & dryer, 407 square feet of private outdoor space, and much more. The building provides a 5,000 square foot roof deck with Manhattan views, a private parking garage, bike storage, and a virtual doorman.

Also signed this week was Unit 5302 at Skyline Tower, located at 3 Court Square in Hunters Point, with a last asking price of \$1,842,411. Built in 2019, this sponsor condo spans 985 square feet with 2 beds and 2 baths. It features a double exposure with views of Manhattan, European white oak engineered wood flooring throughout, a modern kitchen with abundant cabinet space & quartz countertop, a primary bedroom with a walk-in closet and spa-inspired bathroom. The building provides a state-of-the-art fitness center, swimming pool, steam room, business center parking, and a variety of other amenities.

22	0	0
Condo Deal(s)	Co-op Deal(s)	Townhouse Deal(s)
\$1,518,328	\$0	\$0
Average Asking Price	Average Asking Price	Average Asking Price
\$1,599,750	\$0	\$0
Median Asking Price	Median Asking Price	Median Asking Price
\$1,528	N/A	\$0
Average PPSF	Average PPSF	Average PPSF
1,011	N/A	0
Average SqFt	Average SqFt	Average SqFt



THE GALAXY (5-03 50 AVE) #5B

Hunters Point

Type Condo **Status** Contract
SqFt 1,697 **Beds** 3
PPSF \$1,164 **Fees** \$1,357

Ask \$1,975,000
Baths 2
DOM 172

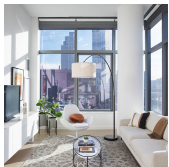


SKYLINE TOWER (3 CT SQ) #5302

Hunters Point

Type Condo **Status** Contract
SqFt 985 **Beds** 2
PPSF \$1,871 **Fees** \$1,876

Ask \$1,842,411
Baths 2
DOM N/A

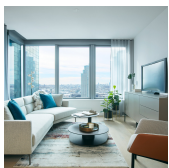


SKYLINE TOWER (3 CT SQ) #5112

Hunters Point

Type Condo **Status** Contract
SqFt 969 **Beds** 2
PPSF \$1,826 **Fees** \$1,845

Ask \$1,769,200
Baths 2
DOM N/A

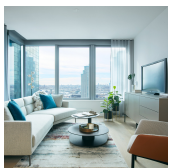


SKYLINE TOWER (3 CT SQ) #4712

Hunters Point

Type Condo **Status** Contract
SqFt 969 **Beds** 2
PPSF \$1,806 **Fees** \$1,845

Ask \$1,749,820
Baths 2
DOM N/A



SKYLINE TOWER (3 CT SQ) #4512

Hunters Point

Type Condo **Status** Contract
SqFt 969 **Beds** 2
PPSF \$1,796 **Fees** \$1,845

Ask \$1,740,130
Baths 2
DOM N/A



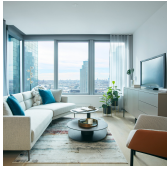
STAR TOWER (27-17 42 RD) #23E

Hunters Point

Type Condo **Status** Contract
SqFt 1,228 **Beds** 2
PPSF \$1,412 **Fees** \$1,473

Ask \$1,733,888
Baths 2
DOM 4

Compass is a licensed real estate broker and abides by Equal Housing Opportunity laws. All material presented herein is intended for informational purposes only. Information is compiled from sources deemed reliable but is subject to errors, omissions, changes in price, condition, sale, or withdrawal without notice. No statement is made as to the accuracy of any description. All measurements and square footages are approximate. This is not intended to solicit property already listed. Nothing herein shall be construed as legal, accounting or other professional advice outside the realm of real estate brokerage.



SKYLINE TOWER (3 CT SQ) # 4312

Hunters Point

Type	Condo	Status	Contract	Ask	\$1,730,440
Sqft	969	Beds	2	Baths	2
PPSF	\$1,786	Fees	\$1,845	DOM	N/A



SKYLINE TOWER (3 CT SQ) # 3912

Hunters Point

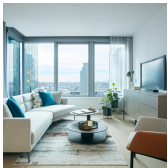
Type	Condo	Status	Contract	Ask	\$1,711,060
Sqft	969	Beds	2	Baths	2
PPSF	\$1,766	Fees	\$1,845	DOM	794



SKYLINE TOWER (3 CT SQ) # 5009

Hunters Point

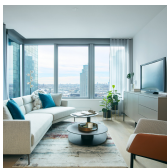
Type	Condo	Status	Contract	Ask	\$1,672,750
Sqft	975	Beds	2	Baths	2
PPSF	\$1,716	Fees	\$1,889	DOM	N/A



SKYLINE TOWER (3 CT SQ) # 5010

Hunters Point

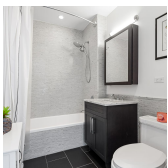
Type	Condo	Status	Contract	Ask	\$1,638,520
Sqft	972	Beds	2	Baths	2
PPSF	\$1,686	Fees	\$1,851	DOM	N/A



SKYLINE TOWER (3 CT SQ) # 4310

Hunters Point

Type	Condo	Status	Contract	Ask	\$1,604,500
Sqft	972	Beds	2	Baths	2
PPSF	\$1,651	Fees	\$1,851	DOM	652



THE HARRISON (27-21 44 DR) # PH2501

Hunters Point

Type	Condo	Status	Contract	Ask	\$1,595,000
Sqft	N/A	Beds	2	Baths	2
PPSF	N/A	Fees	\$1,231	DOM	278

Compass is a licensed real estate broker and abides by Equal Housing Opportunity laws. All material presented herein is intended for informational purposes only. Information is compiled from sources deemed reliable but is subject to errors, omissions, changes in price, condition, sale, or withdrawal without notice. No statement is made as to the accuracy of any description. All measurements and square footages are approximate. This is not intended to solicit property already listed. Nothing herein shall be construed as legal, accounting or other professional advice outside the realm of real estate brokerage.

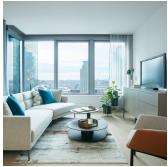


SKYLINE TOWER (3 CT SQ) # 4008

Hunters Point

Type	Condo	Status	Contract
Sqft	964	Beds	2
PPSF	\$1,556	Fees	\$1,836

Ask	\$1,499,920
Baths	2
DOM	N/A



SKYLINE TOWER (3 CT SQ) # 1608

Hunters Point

Type	Condo	Status	Contract
Sqft	978	Beds	2
PPSF	\$1,530	Fees	\$1,895

Ask	\$1,496,276
Baths	2
DOM	N/A

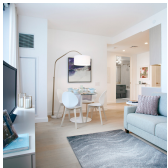


SKYLINE TOWER (3 CT SQ) # 701

Hunters Point

Type	Condo	Status	Contract
Sqft	930	Beds	2
PPSF	\$1,465	Fees	\$1,771

Ask	\$1,361,633
Baths	2
DOM	N/A

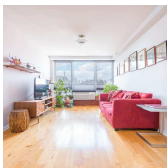


SKYLINE TOWER (3 CT SQ) # 2705

Hunters Point

Type	Condo	Status	Contract
Sqft	932	Beds	2
PPSF	\$1,441	Fees	\$1,775

Ask	\$1,342,254
Baths	2
DOM	N/A



ECHELON (13-11 JACKSON AVE) # 4A

Hunters Point

Type	Condo	Status	Contract
Sqft	1,154	Beds	2
PPSF	\$1,136	Fees	\$1,417

Ask	\$1,310,000
Baths	2
DOM	82



GALERIE (22-18 JACKSON AVE) # 716

Hunters Point

Type	Condo	Status	Contract
Sqft	1,059	Beds	2
PPSF	\$1,223	Fees	\$2,338

Ask	\$1,295,000
Baths	2
DOM	N/A

Compass is a licensed real estate broker and abides by Equal Housing Opportunity laws. All material presented herein is intended for informational purposes only. Information is compiled from sources deemed reliable but is subject to errors, omissions, changes in price, condition, sale, or withdrawal without notice. No statement is made as to the accuracy of any description. All measurements and square footages are approximate. This is not intended to solicit property already listed. Nothing herein shall be construed as legal, accounting or other professional advice outside the realm of real estate brokerage.



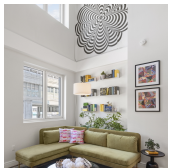
**1 VERNON JACKSON (10-17 JACKSON AVE) Hunters Point
5 C**

Type	Condo	Status	Contract	Ask	\$1,150,000
Sqft	991	Beds	2	Baths	2
PPSF	\$1,161	Fees	\$1,119	DOM	60



SKYLINE TOWER (3 CT SQ) # 3409 Hunters Point

Type	Condo	Status	Contract	Ask	\$1,110,801
Sqft	625	Beds	1	Baths	1
PPSF	\$1,778	Fees	\$1,190	DOM	N/A



HERO (24-16 QUEENS PLZ S) # 2/3A Hunters Point

Type	Condo	Status	Contract	Ask	\$1,050,000
Sqft	1,194	Beds	1	Baths	1
PPSF	\$880	Fees	\$964	DOM	294



SKYLINE TOWER (3 CT SQ) # 416 Hunters Point

Type	Condo	Status	Contract	Ask	\$1,024,595
Sqft	715	Beds	1	Baths	1
PPSF	\$1,433	Fees	\$1,361	DOM	N/A

Compass is a licensed real estate broker and abides by Equal Housing Opportunity laws. All material presented herein is intended for informational purposes only. Information is compiled from sources deemed reliable but is subject to errors, omissions, changes in price, condition, sale, or withdrawal without notice. No statement is made as to the accuracy of any description. All measurements and square footages are approximate. This is not intended to solicit property already listed. Nothing herein shall be construed as legal, accounting or other professional advice outside the realm of real estate brokerage.