

JUNE 21 - 27, 2021

The Long Island City luxury real estate market, defined as all properties \$1M and above, saw 13 contracts signed this week, made up of 12 condos and 1 house. The previous week saw 7 deals.

\$1,302,549

Average Asking Price

\$1,250,000

Median Asking Price

\$1,392

Average PPSF

4%

Average Discount

\$16,933,125

Total Volume

233

Average Days On Market

Unit 5110 at Skyline Tower, located at 3 Court Square in Hunters Point, entered contract this week, with a last asking price of \$1,643,380. Built in 2019, this new development condo spans 972 square feet with 2 beds and 2 full bathrooms. It features engineered white oak floors, wall-to-wall floor-to-ceiling windows, in-unit washer and dryer, a kitchen with quartz slab countertops and matching backsplashes, a primary bedroom with a walk-in closet and en suite bathroom, and much more. The building provides parking, bicycle storage, a fitness center & yoga/pilates room, a 75-foot swimming pool, and a package room.

Also signed this week was Unit 4210 at Skyline Tower, located at 3 Court Square in Hunters Point, with a last asking price of \$1,599,640. Similar to the unit above, it spans 972 square feet with 2 beds and 2 full baths. In addition to the features listed above, these units also feature chic fixtures and finishes, a welcoming foyer, southwest-facing light exposure, a white quartz waterfall vanity, a glass-enclosed walk-in shower, soaking tub, and an excellent location overlooking the East River and Manhattan skyline, and providing easy access to city luxuries and quick transportation.

12

Condo Deal(s)

0

Co-op Deal(s)

1

Townhouse Deal(s)

\$1,319,511

Average Asking Price

\$0

Average Asking Price

\$1,099,000

Average Asking Price

\$1,275,000

Median Asking Price

\$0

Median Asking Price

\$1,099,000

Median Asking Price

\$1,487

Average PPSF

N/A

Average PPSF

\$436

Average PPSF

901

Average SqFt

N/A

Average SqFt

2,526

Average SqFt



SKYLINE TOWER (3 CT SQ) # 5110

Hunters Point

Type	Condo	Status	Contract	Ask	\$1,643,380
SqFt	972	Beds	2	Baths	2
PPSF	\$1,691	Fees	\$1,851	DOM	N/A



SKYLINE TOWER (3 CT SQ) # 4210

Hunters Point

Type	Condo	Status	Contract	Ask	\$1,559,640
SqFt	972	Beds	2	Baths	2
PPSF	\$1,605	Fees	\$1,851	DOM	N/A



SKYLINE TOWER (3 CT SQ) # 2108

Hunters Point

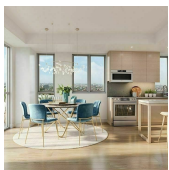
Type	Condo	Status	Contract	Ask	\$1,520,557
SqFt	978	Beds	2	Baths	2
PPSF	\$1,555	Fees	\$1,895	DOM	N/A



STAR TOWER (27-17 42 RD) # 16A

Hunters Point

Type	Condo	Status	Contract	Ask	\$1,444,888
SqFt	1,093	Beds	2	Baths	2
PPSF	\$1,322	Fees	\$1,219	DOM	73



HERO (24-16 QUEENS PLZ S) # 22A

Hunters Point

Type	Condo	Status	Contract	Ask	\$1,375,000
SqFt	918	Beds	1	Baths	2
PPSF	\$1,498	Fees	\$1,405	DOM	N/A



VERNON47 (47-01 VERNON BLVD) # 4D

Hunters Point

Type	Condo	Status	Contract	Ask	\$1,300,000
SqFt	N/A	Beds	2	Baths	2
PPSF	N/A	Fees	\$1,302	DOM	N/A

Compass is a licensed real estate broker and abides by Equal Housing Opportunity laws. All material presented herein is intended for informational purposes only. Information is compiled from sources deemed reliable but is subject to errors, omissions, changes in price, condition, sale, or withdrawal without notice. No statement is made as to the accuracy of any description. All measurements and square footages are approximate. This is not intended to solicit property already listed. Nothing herein shall be construed as legal, accounting or other professional advice outside the realm of real estate brokerage.



VERNON47 (47-01 VERNON BLVD) #3D

Hunters Point

Type	Condo	Status	Contract	Ask	\$1,250,000
Sqft	N/A	Beds	2	Baths	2
PPSF	N/A	Fees	\$1,299	DOM	N/A



THE BOND (46-20 11 ST) #1A

Long Island City

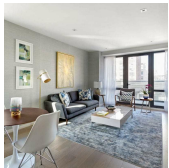
Type	Condo	Status	Contract	Ask	\$1,230,000
Sqft	1,025	Beds	2	Baths	2
PPSF	\$1,200	Fees	\$2,174	DOM	169



SKYLINE TOWER (3 CT SQ) #5303

Hunters Point

Type	Condo	Status	Contract	Ask	\$1,204,789
Sqft	687	Beds	1	Baths	1
PPSF	\$1,754	Fees	\$1,309	DOM	N/A



ARCADIA 27 (42-50 27 ST) #7C

Hunters Point

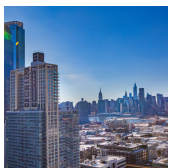
Type	Condo	Status	Contract	Ask	\$1,180,000
Sqft	929	Beds	2	Baths	2
PPSF	\$1,271	Fees	\$719	DOM	524



36-28 29 ST

Astoria

Type	Townhouse	Status	Contract	Ask	\$1,099,000
Sqft	2,526	Beds	4	Baths	3
PPSF	\$436	Fees	N/A	DOM	364



STAR TOWER (27-17 42 RD) #PT1C

Hunters Point

Type	Condo	Status	Contract	Ask	\$1,073,065
Sqft	713	Beds	1	Baths	1
PPSF	\$1,505	Fees	\$557	DOM	35

Compass is a licensed real estate broker and abides by Equal Housing Opportunity laws. All material presented herein is intended for informational purposes only. Information is compiled from sources deemed reliable but is subject to errors, omissions, changes in price, condition, sale, or withdrawal without notice. No statement is made as to the accuracy of any description. All measurements and square footages are approximate. This is not intended to solicit property already listed. Nothing herein shall be construed as legal, accounting or other professional advice outside the realm of real estate brokerage.



SKYLINE TOWER (3 CT SQ) # 635

Type	Condo	Status	Contract
Sqft	719	Beds	1
PPSF	\$1,465	Fees	\$1,369

Hunters Point

Ask	\$1,052,806
Baths	1
DOM	N/A

Compass is a licensed real estate broker and abides by Equal Housing Opportunity laws. All material presented herein is intended for informational purposes only. Information is compiled from sources deemed reliable but is subject to errors, omissions, changes in price, condition, sale, or withdrawal without notice. No statement is made as to the accuracy of any description. All measurements and square footages are approximate. This is not intended to solicit property already listed. Nothing herein shall be construed as legal, accounting or other professional advice outside the realm of real estate brokerage.