

**NOV 15 - 21, 2021**

The Manhattan luxury real estate market, defined as all properties priced \$3.5M and above, saw 71 contracts signed this week, made up of 51 condos, 17 coops, and 3 houses. The previous week saw 60 deals. For more information or data, please reach out to a Compass agent.

**\$7,881,578**

Average Asking Price

**\$5,995,000**

Median Asking Price

**\$2,698**

Average PPSF

**2%**

Average Discount

**\$559,591,988**

Total Volume

**229**

Average Days On Market

22 East 67th Street in Lenox Hill entered contract this week, with a last asking price of \$27,500,000. Originally built in 1915, this 24-foot wide townhouse spans approximately 13,300 square feet with 7 beds and 7+ baths. It features double paneled oak front doors, a limestone reception gallery with nearly 13-foot ceilings and a grand sweeping staircase, wood-burning fireplaces, high ceilings throughout, 2,200 square feet of exterior space, and much more. The primary suite occupies the entire fourth floor, with the bedroom spanning the full width, includes a marble and mahogany paneled bathroom, a 400 square foot dressing room, and more.

Also signed this week was Unit PHA at 200 East 83rd Street on the Upper East Side, with a last asking price of \$27,500,000. Built in 2021, this penthouse condo spans 5,835 square feet with 6 beds and 7 full baths. It features city, river, park, and bridge views, white oak flooring, marble countertops and backsplashes, bathrooms with rain showers and heated stone floors, high-end appliances, and much more. The building offers a fitness center, a concealed automated parking system, a 24-hour doorman and concierge service, and a variety of other amenities.

**51**

Condo Deal(s)

**17**

Co-op Deal(s)

**3**

Townhouse Deal(s)

**\$7,883,569**

Average Asking Price

**\$6,210,589**

Average Asking Price

**\$17,316,667**

Average Asking Price

**\$6,175,000**

Median Asking Price

**\$5,199,999**

Median Asking Price

**\$19,950,000**

Median Asking Price

**\$2,748**

Average PPSF

**\$2,622**

Average PPSF

**\$2,094**

Average PPSF

**2,708**

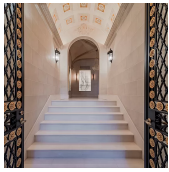
Average SqFt

**2,549**

Average SqFt

**7,898**

Average SqFt



## 22 E 67 ST

Lenox Hill

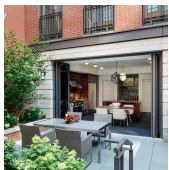
<b>Type</b>	Townhouse	<b>Status</b>	Contract	<b>Ask</b>	\$27,500,000	<b>Initial</b>	\$27,500,000
<b>SqFt</b>	13,300	<b>PPSF</b>	\$2,068	<b>Beds</b>	7	<b>Baths</b>	7
<b>Fees</b>	\$28,116	<b>DOM</b>	473				



## 200 E 83 ST # PHA

Yorkville

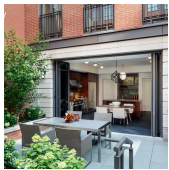
<b>Type</b>	Condo	<b>Status</b>	Contract	<b>Ask</b>	\$27,500,000	<b>Initial</b>	N/A
<b>SqFt</b>	5,835	<b>PPSF</b>	\$4,713	<b>Beds</b>	6	<b>Baths</b>	7
<b>Fees</b>	\$17,660	<b>DOM</b>	N/A				



## 133 W 11 ST

Greenwich Village

<b>Type</b>	Townhouse	<b>Status</b>	Contract	<b>Ask</b>	\$19,950,000	<b>Initial</b>	\$19,950,000
<b>SqFt</b>	6,574	<b>PPSF</b>	\$3,035	<b>Beds</b>	4	<b>Baths</b>	4
<b>Fees</b>	\$15,005	<b>DOM</b>	211				



## 145 W 11 ST # TH133

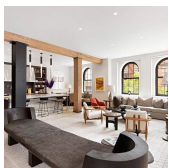
Greenwich Village

<b>Type</b>	Condo	<b>Status</b>	Contract	<b>Ask</b>	\$19,950,000	<b>Initial</b>	\$19,950,000
<b>SqFt</b>	N/A	<b>PPSF</b>	N/A	<b>Beds</b>	4	<b>Baths</b>	4
<b>Fees</b>	\$27,056	<b>DOM</b>	210				

## 224 MULBERRY ST # 4

Nolita

<b>Type</b>	Condo	<b>Status</b>	Contract	<b>Ask</b>	\$17,950,000	<b>Initial</b>	\$17,950,000
<b>SqFt</b>	4,160	<b>PPSF</b>	\$4,315	<b>Beds</b>	4	<b>Baths</b>	3.5
<b>Fees</b>	\$14,389	<b>DOM</b>	38				



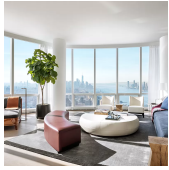
## 443 GREENWICH ST # 2H

Tribeca

<b>Type</b>	Condo	<b>Status</b>	Contract	<b>Ask</b>	\$16,500,000	<b>Initial</b>	\$16,500,000
<b>SqFt</b>	3,950	<b>PPSF</b>	\$4,178	<b>Beds</b>	4	<b>Baths</b>	4.5
<b>Fees</b>	\$14,358	<b>DOM</b>	69				

Compass is a licensed real estate broker and abides by Equal Housing Opportunity laws. All material presented herein is intended for informational purposes only. Information is compiled from sources deemed reliable but is subject to errors, omissions, changes in price, condition, sale, or withdrawal without notice. No statement is made as to the accuracy of any description. All measurements and square footages are approximate. This is not intended to solicit property already listed. Nothing herein shall be construed as legal, accounting or other professional advice outside the realm of real estate brokerage.

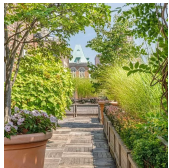




## 15 HUDSON YARDS #PH86A

Hudson Yards

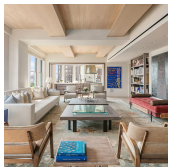
<b>Type</b>	Condo	<b>Status</b>	Contract	<b>Ask</b>	\$13,915,000	<b>Initial</b>	\$13,915,000
<b>Sqft</b>	3,343	<b>PPSF</b>	\$4,163	<b>Beds</b>	4	<b>Baths</b>	4.5
<b>Fees</b>	\$8,845	<b>DOM</b>	525				



## 950 MADISON AVE #PH12A

Lenox Hill

<b>Type</b>	Coop	<b>Status</b>	Contract	<b>Ask</b>	\$12,950,000	<b>Initial</b>	\$12,950,000
<b>Sqft</b>	2,000	<b>PPSF</b>	\$6,475	<b>Beds</b>	2	<b>Baths</b>	2.5
<b>Fees</b>	\$5,764	<b>DOM</b>	61				



## 147 WAVERLY PL # 8

West Village

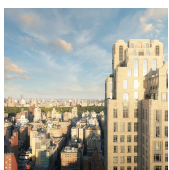
<b>Type</b>	Condo	<b>Status</b>	Contract	<b>Ask</b>	\$12,900,000	<b>Initial</b>	\$12,900,000
<b>Sqft</b>	3,429	<b>PPSF</b>	\$3,763	<b>Beds</b>	4	<b>Baths</b>	3.5
<b>Fees</b>	\$9,880	<b>DOM</b>	122				



## 200 E 83 ST # 29A

Yorkville

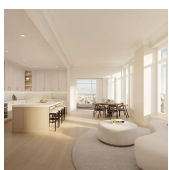
<b>Type</b>	Condo	<b>Status</b>	Contract	<b>Ask</b>	\$11,750,000	<b>Initial</b>	N/A
<b>Sqft</b>	3,346	<b>PPSF</b>	\$3,512	<b>Beds</b>	5	<b>Baths</b>	5.5
<b>Fees</b>	\$9,843	<b>DOM</b>	N/A				



## 200 E 83 ST # 28A

Yorkville

<b>Type</b>	Condo	<b>Status</b>	Contract	<b>Ask</b>	\$11,600,000	<b>Initial</b>	N/A
<b>Sqft</b>	3,346	<b>PPSF</b>	\$3,467	<b>Beds</b>	5	<b>Baths</b>	5.5
<b>Fees</b>	\$9,943	<b>DOM</b>	N/A				



## 200 E 83 ST # 27A

Yorkville

<b>Type</b>	Condo	<b>Status</b>	Contract	<b>Ask</b>	\$11,450,000	<b>Initial</b>	\$10,950,000
<b>Sqft</b>	3,346	<b>PPSF</b>	\$3,422	<b>Beds</b>	5	<b>Baths</b>	5.5
<b>Fees</b>	\$9,943	<b>DOM</b>	28				

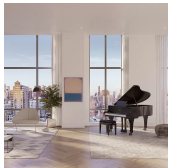
Compass is a licensed real estate broker and abides by Equal Housing Opportunity laws. All material presented herein is intended for informational purposes only. Information is compiled from sources deemed reliable but is subject to errors, omissions, changes in price, condition, sale, or withdrawal without notice. No statement is made as to the accuracy of any description. All measurements and square footages are approximate. This is not intended to solicit property already listed. Nothing herein shall be construed as legal, accounting or other professional advice outside the realm of real estate brokerage.



## 200 E 83 ST #33A

Yorkville

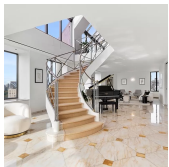
<b>Type</b>	Condo	<b>Status</b>	Contract	<b>Ask</b>	\$10,950,000	<b>Initial</b>	N/A
<b>Sqft</b>	2,979	<b>PPSF</b>	\$3,676	<b>Beds</b>	4	<b>Baths</b>	4.5
<b>Fees</b>	\$8,852	<b>DOM</b>	N/A				



## 227 E 19 ST #17C

Gramercy Park

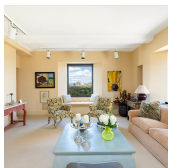
<b>Type</b>	Condo	<b>Status</b>	Contract	<b>Ask</b>	\$10,495,000	<b>Initial</b>	\$10,495,000
<b>Sqft</b>	3,757	<b>PPSF</b>	\$2,794	<b>Beds</b>	3	<b>Baths</b>	3.5
<b>Fees</b>	\$10,908	<b>DOM</b>	152				



## 45 E 80 ST #PH

Upper East Side

<b>Type</b>	Condo	<b>Status</b>	Contract	<b>Ask</b>	\$10,450,000	<b>Initial</b>	\$10,450,000
<b>Sqft</b>	4,400	<b>PPSF</b>	\$2,375	<b>Beds</b>	3	<b>Baths</b>	3.5
<b>Fees</b>	\$20,614	<b>DOM</b>	7				



## 1035 5 AVE #14C

Upper East Side

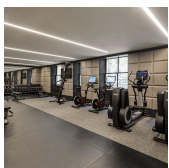
<b>Type</b>	Coop	<b>Status</b>	Contract	<b>Ask</b>	\$9,950,000	<b>Initial</b>	\$11,750,000
<b>Sqft</b>	4,000	<b>PPSF</b>	\$2,488	<b>Beds</b>	5	<b>Baths</b>	5
<b>Fees</b>	\$10,350	<b>DOM</b>	275				



## 415 GREENWICH ST #THG

Tribeca

<b>Type</b>	Condo	<b>Status</b>	Contract	<b>Ask</b>	\$9,800,000	<b>Initial</b>	\$9,800,000
<b>Sqft</b>	4,346	<b>PPSF</b>	\$2,255	<b>Beds</b>	4	<b>Baths</b>	5.5
<b>Fees</b>	\$9,468	<b>DOM</b>	185				



## 225 W 86 ST #907

Upper West Side

<b>Type</b>	Condo	<b>Status</b>	Contract	<b>Ask</b>	\$9,760,000	<b>Initial</b>	\$9,760,000
<b>Sqft</b>	2,264	<b>PPSF</b>	\$4,311	<b>Beds</b>	3	<b>Baths</b>	3
<b>Fees</b>	\$5,567	<b>DOM</b>	N/A				

Compass is a licensed real estate broker and abides by Equal Housing Opportunity laws. All material presented herein is intended for informational purposes only. Information is compiled from sources deemed reliable but is subject to errors, omissions, changes in price, condition, sale, or withdrawal without notice. No statement is made as to the accuracy of any description. All measurements and square footages are approximate. This is not intended to solicit property already listed. Nothing herein shall be construed as legal, accounting or other professional advice outside the realm of real estate brokerage.



## 67 VESTRY ST #THS

Tribeca

<b>Type</b>	Condo	<b>Status</b>	Contract	<b>Ask</b>	\$9,650,000	<b>Initial</b>	\$9,650,000
<b>Sqft</b>	3,204	<b>PPSF</b>	\$3,012	<b>Beds</b>	4	<b>Baths</b>	3.5
<b>Fees</b>	\$10,455	<b>DOM</b>	64				



## 925 PK AVE #5/6A/6D

Upper East Side

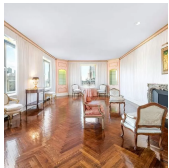
<b>Type</b>	Coop	<b>Status</b>	Contract	<b>Ask</b>	\$8,500,000	<b>Initial</b>	\$8,500,000
<b>Sqft</b>	N/A	<b>PPSF</b>	N/A	<b>Beds</b>	5	<b>Baths</b>	5.5
<b>Fees</b>	\$12,948	<b>DOM</b>	26				



## 532 W 22 ST #2B

Chelsea

<b>Type</b>	Condo	<b>Status</b>	Contract	<b>Ask</b>	\$8,500,000	<b>Initial</b>	\$8,500,000
<b>Sqft</b>	4,025	<b>PPSF</b>	\$2,112	<b>Beds</b>	4	<b>Baths</b>	5
<b>Fees</b>	\$6,617	<b>DOM</b>	56				



## 550 PK AVE #12A

Lenox Hill

<b>Type</b>	Coop	<b>Status</b>	Contract	<b>Ask</b>	\$8,500,000	<b>Initial</b>	\$9,500,000
<b>Sqft</b>	N/A	<b>PPSF</b>	N/A	<b>Beds</b>	4	<b>Baths</b>	4.5
<b>Fees</b>	\$12,245	<b>DOM</b>	294				



## 155 W 18 ST #PH3

Chelsea

<b>Type</b>	Condo	<b>Status</b>	Contract	<b>Ask</b>	\$8,250,000	<b>Initial</b>	\$8,250,000
<b>Sqft</b>	3,062	<b>PPSF</b>	\$2,695	<b>Beds</b>	3	<b>Baths</b>	3.5
<b>Fees</b>	\$10,384	<b>DOM</b>	37				



## 53 WHITE ST #4

Tribeca

<b>Type</b>	Condo	<b>Status</b>	Contract	<b>Ask</b>	\$7,600,000	<b>Initial</b>	\$7,600,000
<b>Sqft</b>	3,000	<b>PPSF</b>	\$2,534	<b>Beds</b>	3	<b>Baths</b>	3.5
<b>Fees</b>	\$8,509	<b>DOM</b>	138				

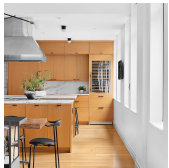
Compass is a licensed real estate broker and abides by Equal Housing Opportunity laws. All material presented herein is intended for informational purposes only. Information is compiled from sources deemed reliable but is subject to errors, omissions, changes in price, condition, sale, or withdrawal without notice. No statement is made as to the accuracy of any description. All measurements and square footages are approximate. This is not intended to solicit property already listed. Nothing herein shall be construed as legal, accounting or other professional advice outside the realm of real estate brokerage.



## 778 PK AVE #2

Lenox Hill

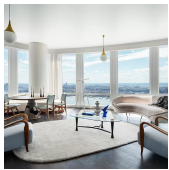
<b>Type</b>	Coop	<b>Status</b>	Contract	<b>Ask</b>	\$7,200,000	<b>Initial</b>	N/A
<b>Sqft</b>	N/A	<b>PPSF</b>	N/A	<b>Beds</b>	3	<b>Baths</b>	3
<b>Fees</b>	\$8,247	<b>DOM</b>	N/A				



## 455 W 20 ST #3BC

Chelsea

<b>Type</b>	Condo	<b>Status</b>	Contract	<b>Ask</b>	\$6,950,000	<b>Initial</b>	\$7,250,000
<b>Sqft</b>	3,231	<b>PPSF</b>	\$2,152	<b>Beds</b>	4	<b>Baths</b>	4.5
<b>Fees</b>	\$8,568	<b>DOM</b>	385				



## 35 HUDSON YARDS #6301

Hudson Yards

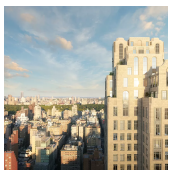
<b>Type</b>	Condo	<b>Status</b>	Contract	<b>Ask</b>	\$6,925,000	<b>Initial</b>	\$6,925,000
<b>Sqft</b>	2,570	<b>PPSF</b>	\$2,695	<b>Beds</b>	3	<b>Baths</b>	3.5
<b>Fees</b>	\$8,077	<b>DOM</b>	292				



## 35 HUDSON YARDS #6502

Hudson Yards

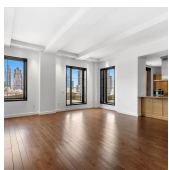
<b>Type</b>	Condo	<b>Status</b>	Contract	<b>Ask</b>	\$6,800,000	<b>Initial</b>	N/A
<b>Sqft</b>	2,022	<b>PPSF</b>	\$3,364	<b>Beds</b>	2	<b>Baths</b>	2.5
<b>Fees</b>	\$6,236	<b>DOM</b>	N/A				



## 200 E 83 ST #24C

Yorkville

<b>Type</b>	Condo	<b>Status</b>	Contract	<b>Ask</b>	\$6,800,000	<b>Initial</b>	N/A
<b>Sqft</b>	2,123	<b>PPSF</b>	\$3,204	<b>Beds</b>	3	<b>Baths</b>	3.5
<b>Fees</b>	\$6,308	<b>DOM</b>	N/A				



## 425 W 50 ST #14F

Clinton

<b>Type</b>	Condo	<b>Status</b>	Contract	<b>Ask</b>	\$6,775,000	<b>Initial</b>	\$6,775,000
<b>Sqft</b>	2,199	<b>PPSF</b>	\$3,081	<b>Beds</b>	3	<b>Baths</b>	3.5
<b>Fees</b>	\$8,803	<b>DOM</b>	50				

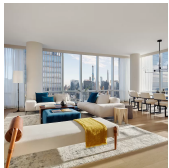
Compass is a licensed real estate broker and abides by Equal Housing Opportunity laws. All material presented herein is intended for informational purposes only. Information is compiled from sources deemed reliable but is subject to errors, omissions, changes in price, condition, sale, or withdrawal without notice. No statement is made as to the accuracy of any description. All measurements and square footages are approximate. This is not intended to solicit property already listed. Nothing herein shall be construed as legal, accounting or other professional advice outside the realm of real estate brokerage.



## 45 E 22 ST #40A

Flatiron District

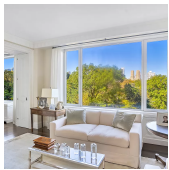
<b>Type</b>	Condo	<b>Status</b>	Contract	<b>Ask</b>	\$6,750,000	<b>Initial</b>	\$7,450,000
<b>Sqft</b>	2,414	<b>PPSF</b>	\$2,797	<b>Beds</b>	3	<b>Baths</b>	3
<b>Fees</b>	\$9,351	<b>DOM</b>	217				



## 15 HUDSON YARDS #63E

Hudson Yards

<b>Type</b>	Condo	<b>Status</b>	Contract	<b>Ask</b>	\$6,750,000	<b>Initial</b>	\$6,750,000
<b>Sqft</b>	2,517	<b>PPSF</b>	\$2,682	<b>Beds</b>	2	<b>Baths</b>	2.5
<b>Fees</b>	\$6,067	<b>DOM</b>	515				



## 912 5 AVE #6A

Lenox Hill

<b>Type</b>	Coop	<b>Status</b>	Contract	<b>Ask</b>	\$6,250,000	<b>Initial</b>	\$6,250,000
<b>Sqft</b>	N/A	<b>PPSF</b>	N/A	<b>Beds</b>	3	<b>Baths</b>	3
<b>Fees</b>	\$7,223	<b>DOM</b>	20				



## 30 RIVERSIDE BLVD #36A

Lincoln Square

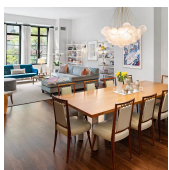
<b>Type</b>	Condo	<b>Status</b>	Contract	<b>Ask</b>	\$6,175,000	<b>Initial</b>	N/A
<b>Sqft</b>	1,918	<b>PPSF</b>	\$3,220	<b>Beds</b>	3	<b>Baths</b>	3.5
<b>Fees</b>	\$2,839	<b>DOM</b>	N/A				



## 145 CENTRAL PK W #14A

Upper West Side

<b>Type</b>	Coop	<b>Status</b>	Contract	<b>Ask</b>	\$6,000,000	<b>Initial</b>	N/A
<b>Sqft</b>	1,667	<b>PPSF</b>	\$3,600	<b>Beds</b>	2	<b>Baths</b>	2
<b>Fees</b>	\$4,800	<b>DOM</b>	N/A				



## 141 READE ST #2A

Tribeca

<b>Type</b>	Condo	<b>Status</b>	Contract	<b>Ask</b>	\$5,995,000	<b>Initial</b>	\$5,995,000
<b>Sqft</b>	2,760	<b>PPSF</b>	\$2,173	<b>Beds</b>	3	<b>Baths</b>	3.5
<b>Fees</b>	\$4,284	<b>DOM</b>	12				

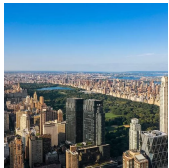
Compass is a licensed real estate broker and abides by Equal Housing Opportunity laws. All material presented herein is intended for informational purposes only. Information is compiled from sources deemed reliable but is subject to errors, omissions, changes in price, condition, sale, or withdrawal without notice. No statement is made as to the accuracy of any description. All measurements and square footages are approximate. This is not intended to solicit property already listed. Nothing herein shall be construed as legal, accounting or other professional advice outside the realm of real estate brokerage.



## 30 RIVERSIDE BLVD #33A

Lincoln Square

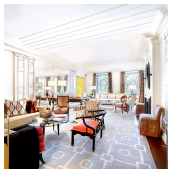
<b>Type</b>	Condo	<b>Status</b>	Contract	<b>Ask</b>	\$5,965,000	<b>Initial</b>	\$5,965,000
<b>Sqft</b>	1,918	<b>PPSF</b>	\$3,111	<b>Beds</b>	3	<b>Baths</b>	3.5
<b>Fees</b>	\$2,799	<b>DOM</b>	224				



## 80 COLUMBUS CIRCLE #68E

Lincoln Square

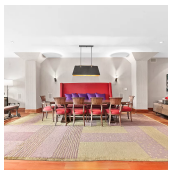
<b>Type</b>	Condo	<b>Status</b>	Contract	<b>Ask</b>	\$5,900,000	<b>Initial</b>	\$6,250,000
<b>Sqft</b>	1,488	<b>PPSF</b>	\$3,966	<b>Beds</b>	2	<b>Baths</b>	2
<b>Fees</b>	\$6,003	<b>DOM</b>	970				



## 912 5 AVE #3A

Lenox Hill

<b>Type</b>	Coop	<b>Status</b>	Contract	<b>Ask</b>	\$5,850,000	<b>Initial</b>	\$5,850,000
<b>Sqft</b>	N/A	<b>PPSF</b>	N/A	<b>Beds</b>	4	<b>Baths</b>	3.5
<b>Fees</b>	\$6,527	<b>DOM</b>	637				



## 25 N MOORE ST #12A

Tribeca

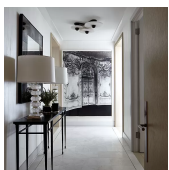
<b>Type</b>	Condo	<b>Status</b>	Contract	<b>Ask</b>	\$5,800,000	<b>Initial</b>	\$6,500,000
<b>Sqft</b>	2,907	<b>PPSF</b>	\$1,996	<b>Beds</b>	3	<b>Baths</b>	2.5
<b>Fees</b>	\$6,649	<b>DOM</b>	739				



## 40 E END AVE #11A

Yorkville

<b>Type</b>	Condo	<b>Status</b>	Contract	<b>Ask</b>	\$5,700,990	<b>Initial</b>	\$5,700,990
<b>Sqft</b>	2,229	<b>PPSF</b>	\$2,558	<b>Beds</b>	3	<b>Baths</b>	3.5
<b>Fees</b>	\$5,745	<b>DOM</b>	44				



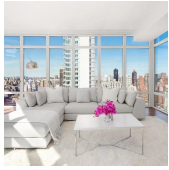
## 200 AMSTERDAM AVE #12B

Upper West Side

<b>Type</b>	Condo	<b>Status</b>	Contract	<b>Ask</b>	\$5,650,000	<b>Initial</b>	\$5,650,000
<b>Sqft</b>	2,394	<b>PPSF</b>	\$2,361	<b>Beds</b>	3	<b>Baths</b>	3.5
<b>Fees</b>	\$6,523	<b>DOM</b>	228				

Compass is a licensed real estate broker and abides by Equal Housing Opportunity laws. All material presented herein is intended for informational purposes only. Information is compiled from sources deemed reliable but is subject to errors, omissions, changes in price, condition, sale, or withdrawal without notice. No statement is made as to the accuracy of any description. All measurements and square footages are approximate. This is not intended to solicit property already listed. Nothing herein shall be construed as legal, accounting or other professional advice outside the realm of real estate brokerage.





## 207 E 57 ST #32AB

Sutton Place

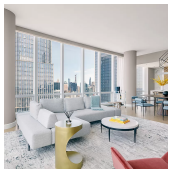
<b>Type</b>	Condo	<b>Status</b>	Contract	<b>Ask</b>	\$5,595,000	<b>Initial</b>	\$5,595,000
<b>Sqft</b>	3,268	<b>PPSF</b>	\$1,713	<b>Beds</b>	5	<b>Baths</b>	5
<b>Fees</b>	\$9,642	<b>DOM</b>	189				



## 465 WASHINGTON ST #4

Tribeca

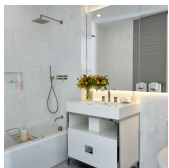
<b>Type</b>	Condo	<b>Status</b>	Contract	<b>Ask</b>	\$5,500,000	<b>Initial</b>	\$6,000,000
<b>Sqft</b>	2,775	<b>PPSF</b>	\$1,982	<b>Beds</b>	4	<b>Baths</b>	3
<b>Fees</b>	\$6,758	<b>DOM</b>	382				



## 15 HUDSON YARDS #63D

Hudson Yards

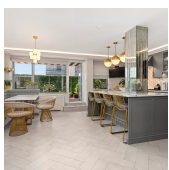
<b>Type</b>	Condo	<b>Status</b>	Contract	<b>Ask</b>	\$5,475,000	<b>Initial</b>	\$5,475,000
<b>Sqft</b>	2,020	<b>PPSF</b>	\$2,711	<b>Beds</b>	2	<b>Baths</b>	2.5
<b>Fees</b>	\$4,892	<b>DOM</b>	69				



## 200 AMSTERDAM AVE #7C

Upper West Side

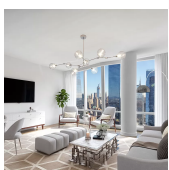
<b>Type</b>	Condo	<b>Status</b>	Contract	<b>Ask</b>	\$5,200,000	<b>Initial</b>	\$4,970,000
<b>Sqft</b>	2,437	<b>PPSF</b>	\$2,134	<b>Beds</b>	3	<b>Baths</b>	3
<b>Fees</b>	\$6,230	<b>DOM</b>	77				



## 500 E 83 ST #16ABC

Yorkville

<b>Type</b>	Coop	<b>Status</b>	Contract	<b>Ask</b>	\$5,199,999	<b>Initial</b>	\$4,999,999
<b>Sqft</b>	3,500	<b>PPSF</b>	\$1,486	<b>Beds</b>	4	<b>Baths</b>	3.5
<b>Fees</b>	\$8,639	<b>DOM</b>	460				



## 15 HUDSON YARDS #80F

Hudson Yards

<b>Type</b>	Condo	<b>Status</b>	Contract	<b>Ask</b>	\$5,150,000	<b>Initial</b>	\$5,150,000
<b>Sqft</b>	1,634	<b>PPSF</b>	\$3,152	<b>Beds</b>	2	<b>Baths</b>	2.5
<b>Fees</b>	\$4,095	<b>DOM</b>	287				

Compass is a licensed real estate broker and abides by Equal Housing Opportunity laws. All material presented herein is intended for informational purposes only. Information is compiled from sources deemed reliable but is subject to errors, omissions, changes in price, condition, sale, or withdrawal without notice. No statement is made as to the accuracy of any description. All measurements and square footages are approximate. This is not intended to solicit property already listed. Nothing herein shall be construed as legal, accounting or other professional advice outside the realm of real estate brokerage.

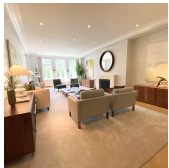




## 345 W 14 ST #PHB

Chelsea

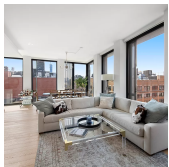
<b>Type</b>	Condo	<b>Status</b>	Contract	<b>Ask</b>	\$4,999,000	<b>Initial</b>	N/A
<b>Sqft</b>	2,016	<b>PPSF</b>	\$2,480	<b>Beds</b>	3	<b>Baths</b>	2.5
<b>Fees</b>	\$5,569	<b>DOM</b>	N/A				



## 211 CENTRAL PK W #3B

Upper West Side

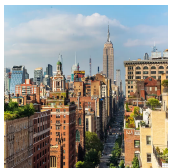
<b>Type</b>	Coop	<b>Status</b>	Contract	<b>Ask</b>	\$4,995,000	<b>Initial</b>	\$4,995,000
<b>Sqft</b>	2,400	<b>PPSF</b>	\$2,082	<b>Beds</b>	3	<b>Baths</b>	3
<b>Fees</b>	\$4,479	<b>DOM</b>	20				



## 100 BARROW ST #11A

West Village

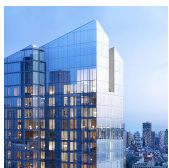
<b>Type</b>	Coop	<b>Status</b>	Contract	<b>Ask</b>	\$4,950,000	<b>Initial</b>	\$4,950,000
<b>Sqft</b>	1,779	<b>PPSF</b>	\$2,783	<b>Beds</b>	2	<b>Baths</b>	2.5
<b>Fees</b>	\$5,564	<b>DOM</b>	57				



## 1 5 AVE #PH18CD

Greenwich Village

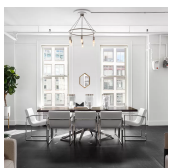
<b>Type</b>	Coop	<b>Status</b>	Contract	<b>Ask</b>	\$4,875,000	<b>Initial</b>	\$7,350,000
<b>Sqft</b>	N/A	<b>PPSF</b>	N/A	<b>Beds</b>	2	<b>Baths</b>	2
<b>Fees</b>	N/A	<b>DOM</b>	476				



## 30 RIVERSIDE BLVD #23P

Lincoln Square

<b>Type</b>	Condo	<b>Status</b>	Contract	<b>Ask</b>	\$4,870,000	<b>Initial</b>	\$4,870,000
<b>Sqft</b>	1,811	<b>PPSF</b>	\$2,690	<b>Beds</b>	3	<b>Baths</b>	3.5
<b>Fees</b>	\$2,520	<b>DOM</b>	624				

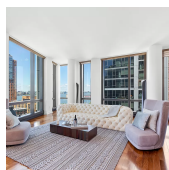


## 330 LAFAYETTE ST #5B

Noho

<b>Type</b>	Condo	<b>Status</b>	Contract	<b>Ask</b>	\$4,850,000	<b>Initial</b>	\$4,850,000
<b>Sqft</b>	2,200	<b>PPSF</b>	\$2,205	<b>Beds</b>	3	<b>Baths</b>	2
<b>Fees</b>	\$2,874	<b>DOM</b>	9				

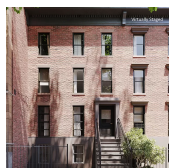
Compass is a licensed real estate broker and abides by Equal Housing Opportunity laws. All material presented herein is intended for informational purposes only. Information is compiled from sources deemed reliable but is subject to errors, omissions, changes in price, condition, sale, or withdrawal without notice. No statement is made as to the accuracy of any description. All measurements and square footages are approximate. This is not intended to solicit property already listed. Nothing herein shall be construed as legal, accounting or other professional advice outside the realm of real estate brokerage.



## 89 MURRAY ST #2020

Tribeca

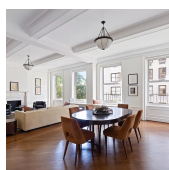
<b>Type</b>	Condominium	<b>Status</b>	Contract	<b>Ask</b>	\$4,750,000	<b>Initial</b>	\$4,750,000
<b>Sqft</b>	2,388	<b>PPSF</b>	\$1,990	<b>Beds</b>	3	<b>Baths</b>	3.5
<b>Fees</b>	\$7,006	<b>DOM</b>	190				



## 247 W 24 ST

Chelsea

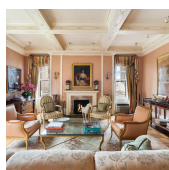
<b>Type</b>	Townhouse	<b>Status</b>	Contract	<b>Ask</b>	\$4,500,000	<b>Initial</b>	\$4,500,000
<b>Sqft</b>	3,820	<b>PPSF</b>	\$1,179	<b>Beds</b>	3	<b>Baths</b>	2
<b>Fees</b>	\$2,944	<b>DOM</b>	51				



## 271 CENTRAL PK W #4W

Upper West Side

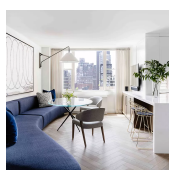
<b>Type</b>	Coop	<b>Status</b>	Contract	<b>Ask</b>	\$4,350,000	<b>Initial</b>	\$4,350,000
<b>Sqft</b>	N/A	<b>PPSF</b>	N/A	<b>Beds</b>	4	<b>Baths</b>	3
<b>Fees</b>	N/A	<b>DOM</b>	18				



## 555 PK AVE #7E

Lenox Hill

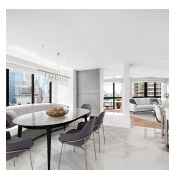
<b>Type</b>	Coop	<b>Status</b>	Contract	<b>Ask</b>	\$4,300,000	<b>Initial</b>	\$4,400,000
<b>Sqft</b>	3,000	<b>PPSF</b>	\$1,434	<b>Beds</b>	3	<b>Baths</b>	3
<b>Fees</b>	\$8,056	<b>DOM</b>	181				



## 1218 3 AVE #16F

Lenox Hill

<b>Type</b>	Coop	<b>Status</b>	Contract	<b>Ask</b>	\$4,265,000	<b>Initial</b>	\$4,595,000
<b>Sqft</b>	N/A	<b>PPSF</b>	N/A	<b>Beds</b>	4	<b>Baths</b>	4
<b>Fees</b>	\$4,564	<b>DOM</b>	254				



## 201 E 60 ST #22ABCD

Lenox Hill

<b>Type</b>	Condo	<b>Status</b>	Contract	<b>Ask</b>	\$3,999,999	<b>Initial</b>	\$5,250,000
<b>Sqft</b>	3,183	<b>PPSF</b>	\$1,257	<b>Beds</b>	4	<b>Baths</b>	3.5
<b>Fees</b>	\$8,449	<b>DOM</b>	268				

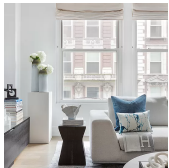
Compass is a licensed real estate broker and abides by Equal Housing Opportunity laws. All material presented herein is intended for informational purposes only. Information is compiled from sources deemed reliable but is subject to errors, omissions, changes in price, condition, sale, or withdrawal without notice. No statement is made as to the accuracy of any description. All measurements and square footages are approximate. This is not intended to solicit property already listed. Nothing herein shall be construed as legal, accounting or other professional advice outside the realm of real estate brokerage.



## 246 W 17 ST # PHA

Chelsea

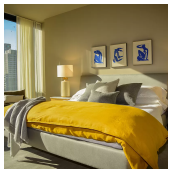
<b>Type</b>	Condo	<b>Status</b>	Contract	<b>Ask</b>	\$3,995,000	<b>Initial</b>	\$3,995,000
<b>Sqft</b>	1,571	<b>PPSF</b>	\$2,543	<b>Beds</b>	2	<b>Baths</b>	2
<b>Fees</b>	\$5,529	<b>DOM</b>	7				



## 260 PK AVE S #5J

Flatiron District

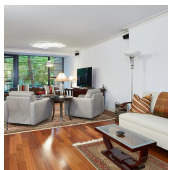
<b>Type</b>	Condo	<b>Status</b>	Contract	<b>Ask</b>	\$3,995,000	<b>Initial</b>	\$4,495,000
<b>Sqft</b>	2,525	<b>PPSF</b>	\$1,583	<b>Beds</b>	2	<b>Baths</b>	2.5
<b>Fees</b>	\$6,139	<b>DOM</b>	737				



## 685 1 AVE #33E

Tudor City

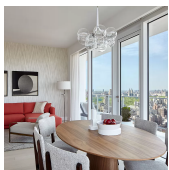
<b>Type</b>	Condo	<b>Status</b>	Contract	<b>Ask</b>	\$3,805,000	<b>Initial</b>	\$3,805,000
<b>Sqft</b>	2,156	<b>PPSF</b>	\$1,765	<b>Beds</b>	3	<b>Baths</b>	3.5
<b>Fees</b>	\$6,403	<b>DOM</b>	152				



## 37 W 12 ST #2J

Greenwich Village

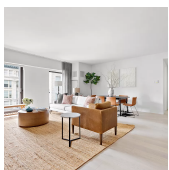
<b>Type</b>	Coop	<b>Status</b>	Contract	<b>Ask</b>	\$3,795,000	<b>Initial</b>	\$3,895,000
<b>Sqft</b>	2,200	<b>PPSF</b>	\$1,725	<b>Beds</b>	3	<b>Baths</b>	3.5
<b>Fees</b>	\$5,956	<b>DOM</b>	270				



## 200 E 59 ST #19D

Sutton Place

<b>Type</b>	Condo	<b>Status</b>	Contract	<b>Ask</b>	\$3,782,000	<b>Initial</b>	\$3,995,000
<b>Sqft</b>	1,523	<b>PPSF</b>	\$2,484	<b>Beds</b>	2	<b>Baths</b>	2.5
<b>Fees</b>	\$5,543	<b>DOM</b>	622				



## 55 W 17 ST #804

Flatiron District

<b>Type</b>	Condo	<b>Status</b>	Contract	<b>Ask</b>	\$3,695,000	<b>Initial</b>	\$3,895,000
<b>Sqft</b>	1,934	<b>PPSF</b>	\$1,911	<b>Beds</b>	3	<b>Baths</b>	2.5
<b>Fees</b>	\$5,855	<b>DOM</b>	498				

Compass is a licensed real estate broker and abides by Equal Housing Opportunity laws. All material presented herein is intended for informational purposes only. Information is compiled from sources deemed reliable but is subject to errors, omissions, changes in price, condition, sale, or withdrawal without notice. No statement is made as to the accuracy of any description. All measurements and square footages are approximate. This is not intended to solicit property already listed. Nothing herein shall be construed as legal, accounting or other professional advice outside the realm of real estate brokerage.



## 15 E 69 ST #5B

Lenox Hill

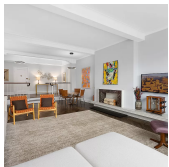
<b>Type</b>	Condo	<b>Status</b>	Contract	<b>Ask</b>	\$3,695,000	<b>Initial</b>	\$3,695,000
<b>Sqft</b>	1,566	<b>PPSF</b>	\$2,360	<b>Beds</b>	2	<b>Baths</b>	2.5
<b>Fees</b>	\$5,587	<b>DOM</b>	43				



## 200 E 83 ST #14A

Yorkville

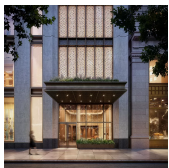
<b>Type</b>	Condo	<b>Status</b>	Contract	<b>Ask</b>	\$3,675,000	<b>Initial</b>	N/A
<b>Sqft</b>	1,511	<b>PPSF</b>	\$2,433	<b>Beds</b>	2	<b>Baths</b>	2.5
<b>Fees</b>	\$4,490	<b>DOM</b>	N/A				



## 450 W END AVE #15A

Upper West Side

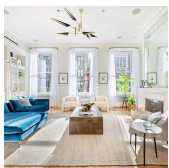
<b>Type</b>	Coop	<b>Status</b>	Contract	<b>Ask</b>	\$3,650,000	<b>Initial</b>	\$3,650,000
<b>Sqft</b>	2,395	<b>PPSF</b>	\$1,525	<b>Beds</b>	3	<b>Baths</b>	3
<b>Fees</b>	\$4,841	<b>DOM</b>	11				



## 25 PK ROW #6E

Financial District

<b>Type</b>	Condo	<b>Status</b>	Contract	<b>Ask</b>	\$3,575,000	<b>Initial</b>	\$3,575,000
<b>Sqft</b>	1,863	<b>PPSF</b>	\$1,919	<b>Beds</b>	3	<b>Baths</b>	3
<b>Fees</b>	\$5,597	<b>DOM</b>	209				



## 48 MERCER ST #3E

Soho

<b>Type</b>	Condo	<b>Status</b>	Contract	<b>Ask</b>	\$3,550,000	<b>Initial</b>	\$3,550,000
<b>Sqft</b>	2,489	<b>PPSF</b>	\$1,427	<b>Beds</b>	2	<b>Baths</b>	3
<b>Fees</b>	\$4,677	<b>DOM</b>	14				

Compass is a licensed real estate broker and abides by Equal Housing Opportunity laws. All material presented herein is intended for informational purposes only. Information is compiled from sources deemed reliable but is subject to errors, omissions, changes in price, condition, sale, or withdrawal without notice. No statement is made as to the accuracy of any description. All measurements and square footages are approximate. This is not intended to solicit property already listed. Nothing herein shall be construed as legal, accounting or other professional advice outside the realm of real estate brokerage.