

**OCT 18 - 24, 2021**

The Manhattan luxury real estate market, defined as all properties priced \$3.5M and above, saw 92 contracts signed this week, made up of 83 condos, 6 coops, and 3 houses. The previous week saw 40 deals. For more information or data, please reach out to a Compass agent.

**\$7,631,881**

Average Asking Price

**\$5,595,000**

Median Asking Price

**\$2,622**

Average PPSF

**3%**

Average Discount

**\$702,132,999**

Total Volume

**189**

Average Days On Market

Penthouse H at 443 Greenwich Street in TriBeCa entered contract this week, with a last asking price of \$49,500,000. This condo spans 8,908 square feet with 6 beds and 6 full baths. It features over 12,000 square feet of indoor and outdoor space, 20-foot ceilings, multiple terraces, a plunge pool, two dedicated parking spaces, a private elevator, pine beams with steel fittings, seventeen restored windows, a glass-encased top level with nearly 3,500 square feet of terraces, and much more. The building provides a 24-hour doorman and concierge service, valet, a fitness center, a landscaped roof terrace, and many other amenities.

Also signed this week was 334 West 20th Street in Chelsea, with a last asking price of \$25,000,000. This 25-foot wide, restored townhouse spans 7,058 square feet with 5 beds and 5 full baths. It features three separate and distinct outdoor spaces, a rooftop deck, a tiered garden, high ceilings, 5-inch wide plank white oak floors, mahogany pocket doors, wood-burning and gas fireplaces, an elevator, high-end appliances, a full top floor primary suite, and much more.

**83**

Condo Deal(s)

**6**

Co-op Deal(s)

**3**

Townhouse Deal(s)

**\$7,389,145**

Average Asking Price

**\$7,164,834**

Average Asking Price

**\$15,281,667**

Average Asking Price

**\$5,550,000**

Median Asking Price

**\$4,872,500**

Median Asking Price

**\$11,950,000**

Median Asking Price

**\$2,649**

Average PPSF

**\$1,793**

Average PPSF

**\$2,719**

Average PPSF

**2,896**

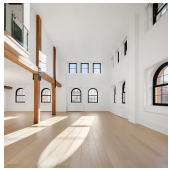
Average SqFt

**2,884**

Average SqFt

**5,353**

Average SqFt



## 443 GREENWICH ST #PHH

Tribeca

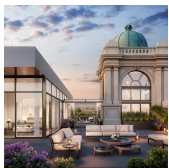
<b>Type</b>	Condo	<b>Status</b>	Contract	<b>Ask</b>	\$49,500,000	<b>Initial</b>	\$49,500,000
<b>SqFt</b>	8,908	<b>PPSF</b>	\$5,557	<b>Beds</b>	6	<b>Baths</b>	6
<b>Fees</b>	\$41,364	<b>DOM</b>	29				



## 334 W 20 ST

Chelsea

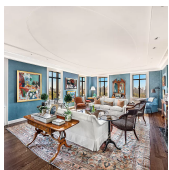
<b>Type</b>	Townhouse	<b>Status</b>	Contract	<b>Ask</b>	\$25,000,000	<b>Initial</b>	\$25,000,000
<b>SqFt</b>	7,058	<b>PPSF</b>	\$3,543	<b>Beds</b>	5	<b>Baths</b>	5
<b>Fees</b>	\$6,565	<b>DOM</b>	219				



## 108 LEONARD #PHE

Tribeca

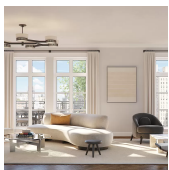
<b>Type</b>	Condo	<b>Status</b>	Contract	<b>Ask</b>	\$20,500,000	<b>Initial</b>	N/A
<b>SqFt</b>	6,346	<b>PPSF</b>	\$3,231	<b>Beds</b>	5	<b>Baths</b>	5
<b>Fees</b>	\$16,675	<b>DOM</b>	N/A				



## 145-146 CENTRAL PK W #15EF

Upper West Side

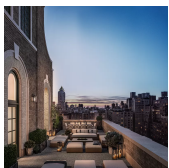
<b>Type</b>	Coop	<b>Status</b>	Contract	<b>Ask</b>	\$19,950,000	<b>Initial</b>	\$25,000,000
<b>SqFt</b>	N/A	<b>PPSF</b>	N/A	<b>Beds</b>	4	<b>Baths</b>	5.5
<b>Fees</b>	\$14,007	<b>DOM</b>	712				



## 150 E 78 ST #PH14

Lenox Hill

<b>Type</b>	Condo	<b>Status</b>	Contract	<b>Ask</b>	\$17,500,000	<b>Initial</b>	\$17,500,000
<b>SqFt</b>	4,017	<b>PPSF</b>	\$4,357	<b>Beds</b>	5	<b>Baths</b>	5
<b>Fees</b>	\$10,876	<b>DOM</b>	267				



## 150 E 78 ST #PH16

Lenox Hill

<b>Type</b>	Condo	<b>Status</b>	Contract	<b>Ask</b>	\$16,400,000	<b>Initial</b>	\$16,400,000
<b>SqFt</b>	3,561	<b>PPSF</b>	\$4,606	<b>Beds</b>	4	<b>Baths</b>	4
<b>Fees</b>	\$10,470	<b>DOM</b>	266				

Compass is a licensed real estate broker and abides by Equal Housing Opportunity laws. All material presented herein is intended for informational purposes only. Information is compiled from sources deemed reliable but is subject to errors, omissions, changes in price, condition, sale, or withdrawal without notice. No statement is made as to the accuracy of any description. All measurements and square footages are approximate. This is not intended to solicit property already listed. Nothing herein shall be construed as legal, accounting or other professional advice outside the realm of real estate brokerage.

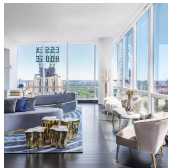




## 150 E 78 ST #PH15

Lenox Hill

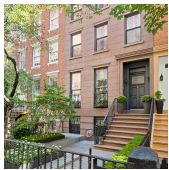
<b>Type</b>	Condo	<b>Status</b>	Contract	<b>Ask</b>	\$16,350,000	<b>Initial</b>	\$16,350,000
<b>Sqft</b>	3,727	<b>PPSF</b>	\$4,387	<b>Beds</b>	4	<b>Baths</b>	4.5
<b>Fees</b>	\$10,071	<b>DOM</b>	54				



## 157 W 57 ST #45C

Midtown

<b>Type</b>	Condo	<b>Status</b>	Contract	<b>Ask</b>	\$12,495,000	<b>Initial</b>	\$16,000,000
<b>Sqft</b>	3,466	<b>PPSF</b>	\$3,606	<b>Beds</b>	4	<b>Baths</b>	4.5
<b>Fees</b>	\$10,289	<b>DOM</b>	603				



## 451 W 24 ST

Chelsea

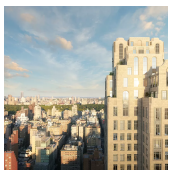
<b>Type</b>	Townhouse	<b>Status</b>	Contract	<b>Ask</b>	\$11,950,000	<b>Initial</b>	\$11,950,000
<b>Sqft</b>	5,000	<b>PPSF</b>	\$2,390	<b>Beds</b>	4	<b>Baths</b>	3
<b>Fees</b>	\$3,089	<b>DOM</b>	132				



## 109 E 79 ST #7W

Upper East Side

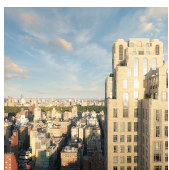
<b>Type</b>	Condo	<b>Status</b>	Contract	<b>Ask</b>	\$11,500,000	<b>Initial</b>	\$11,500,000
<b>Sqft</b>	3,492	<b>PPSF</b>	\$3,294	<b>Beds</b>	4	<b>Baths</b>	4.5
<b>Fees</b>	\$8,861	<b>DOM</b>	34				



## 200 E 83 ST #34A

Upper East Side

<b>Type</b>	Condo	<b>Status</b>	Contract	<b>Ask</b>	\$11,500,000	<b>Initial</b>	N/A
<b>Sqft</b>	3,339	<b>PPSF</b>	\$3,445	<b>Beds</b>	5	<b>Baths</b>	5.5
<b>Fees</b>	\$8,852	<b>DOM</b>	N/A				



## 200 E 83 ST #30A

Upper East Side

<b>Type</b>	Condo	<b>Status</b>	Contract	<b>Ask</b>	\$11,400,000	<b>Initial</b>	N/A
<b>Sqft</b>	3,346	<b>PPSF</b>	\$3,408	<b>Beds</b>	5	<b>Baths</b>	5.5
<b>Fees</b>	\$9,943	<b>DOM</b>	N/A				

Compass is a licensed real estate broker and abides by Equal Housing Opportunity laws. All material presented herein is intended for informational purposes only. Information is compiled from sources deemed reliable but is subject to errors, omissions, changes in price, condition, sale, or withdrawal without notice. No statement is made as to the accuracy of any description. All measurements and square footages are approximate. This is not intended to solicit property already listed. Nothing herein shall be construed as legal, accounting or other professional advice outside the realm of real estate brokerage.



## 219 W 77 ST #15

Upper West Side

<b>Type</b>	Condo	<b>Status</b>	Contract	<b>Ask</b>	\$10,950,000	<b>Initial</b>	\$10,950,000
<b>Sqft</b>	3,396	<b>PPSF</b>	\$3,225	<b>Beds</b>	4	<b>Baths</b>	4.5
<b>Fees</b>	\$9,376	<b>DOM</b>	159				



## 1 CENTRAL PK S #1301

Midtown

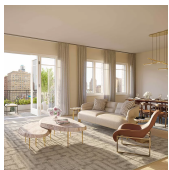
<b>Type</b>	Condo	<b>Status</b>	Contract	<b>Ask</b>	\$10,750,000	<b>Initial</b>	\$10,750,000
<b>Sqft</b>	2,656	<b>PPSF</b>	\$4,048	<b>Beds</b>	3	<b>Baths</b>	3.5
<b>Fees</b>	\$9,027	<b>DOM</b>	37				



## 200 E 83 ST #35A

Upper East Side

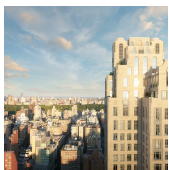
<b>Type</b>	Condo	<b>Status</b>	Contract	<b>Ask</b>	\$10,500,000	<b>Initial</b>	N/A
<b>Sqft</b>	2,979	<b>PPSF</b>	\$3,525	<b>Beds</b>	4	<b>Baths</b>	4.5
<b>Fees</b>	\$8,852	<b>DOM</b>	N/A				



## 378 W END AVE #6C

Upper West Side

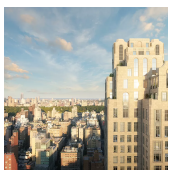
<b>Type</b>	Condo	<b>Status</b>	Contract	<b>Ask</b>	\$10,200,000	<b>Initial</b>	\$10,200,000
<b>Sqft</b>	3,745	<b>PPSF</b>	\$2,724	<b>Beds</b>	5	<b>Baths</b>	5.5
<b>Fees</b>	\$9,615	<b>DOM</b>	21				



## 200 E 83 ST #31A

Upper East Side

<b>Type</b>	Condo	<b>Status</b>	Contract	<b>Ask</b>	\$9,850,000	<b>Initial</b>	N/A
<b>Sqft</b>	2,979	<b>PPSF</b>	\$3,307	<b>Beds</b>	4	<b>Baths</b>	4.5
<b>Fees</b>	\$8,852	<b>DOM</b>	N/A				



## 200 E 83 ST #35B

Upper East Side

<b>Type</b>	Condo	<b>Status</b>	Contract	<b>Ask</b>	\$9,500,000	<b>Initial</b>	N/A
<b>Sqft</b>	2,630	<b>PPSF</b>	\$3,613	<b>Beds</b>	4	<b>Baths</b>	4.5
<b>Fees</b>	\$7,815	<b>DOM</b>	N/A				

Compass is a licensed real estate broker and abides by Equal Housing Opportunity laws. All material presented herein is intended for informational purposes only. Information is compiled from sources deemed reliable but is subject to errors, omissions, changes in price, condition, sale, or withdrawal without notice. No statement is made as to the accuracy of any description. All measurements and square footages are approximate. This is not intended to solicit property already listed. Nothing herein shall be construed as legal, accounting or other professional advice outside the realm of real estate brokerage.



## 10 MADISON SQ W #7E

Flatiron District

<b>Type</b>	Condo	<b>Status</b>	Contract	<b>Ask</b>	\$9,250,000	<b>Initial</b>	\$9,250,000
<b>Sqft</b>	2,871	<b>PPSF</b>	\$3,222	<b>Beds</b>	3	<b>Baths</b>	3
<b>Fees</b>	\$9,717	<b>DOM</b>	124				



## 200 E 83 ST #33B

Upper East Side

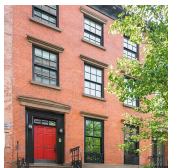
<b>Type</b>	Condo	<b>Status</b>	Contract	<b>Ask</b>	\$9,100,000	<b>Initial</b>	N/A
<b>Sqft</b>	2,630	<b>PPSF</b>	\$3,461	<b>Beds</b>	4	<b>Baths</b>	4.5
<b>Fees</b>	\$7,815	<b>DOM</b>	N/A				



## 200 E 83 ST #32B

Upper East Side

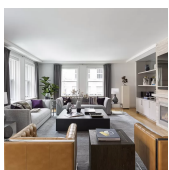
<b>Type</b>	Condo	<b>Status</b>	Contract	<b>Ask</b>	\$8,950,000	<b>Initial</b>	N/A
<b>Sqft</b>	2,630	<b>PPSF</b>	\$3,404	<b>Beds</b>	4	<b>Baths</b>	4.5
<b>Fees</b>	\$7,815	<b>DOM</b>	N/A				



## 60 JANE ST

West Village

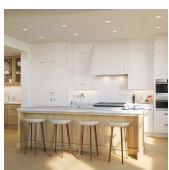
<b>Type</b>	Townhouse	<b>Status</b>	Contract	<b>Ask</b>	\$8,895,000	<b>Initial</b>	\$8,895,000
<b>Sqft</b>	4,000	<b>PPSF</b>	\$2,224	<b>Beds</b>	3	<b>Baths</b>	4.5
<b>Fees</b>	\$3,631	<b>DOM</b>	69				



## 401 WASHINGTON ST #3D

Tribeca

<b>Type</b>	Condo	<b>Status</b>	Contract	<b>Ask</b>	\$8,895,000	<b>Initial</b>	\$8,895,000
<b>Sqft</b>	3,243	<b>PPSF</b>	\$2,743	<b>Beds</b>	4	<b>Baths</b>	4
<b>Fees</b>	\$9,346	<b>DOM</b>	21				



## 378 W END AVE #14C

Upper West Side

<b>Type</b>	Condo	<b>Status</b>	Contract	<b>Ask</b>	\$8,850,000	<b>Initial</b>	\$8,850,000
<b>Sqft</b>	2,854	<b>PPSF</b>	\$3,101	<b>Beds</b>	4	<b>Baths</b>	3.5
<b>Fees</b>	\$7,342	<b>DOM</b>	21				

Compass is a licensed real estate broker and abides by Equal Housing Opportunity laws. All material presented herein is intended for informational purposes only. Information is compiled from sources deemed reliable but is subject to errors, omissions, changes in price, condition, sale, or withdrawal without notice. No statement is made as to the accuracy of any description. All measurements and square footages are approximate. This is not intended to solicit property already listed. Nothing herein shall be construed as legal, accounting or other professional advice outside the realm of real estate brokerage.



## 200 E 83 ST # 31B

Upper East Side

<b>Type</b>	Condo	<b>Status</b>	Contract	<b>Ask</b>	\$8,850,000	<b>Initial</b>	N/A
<b>Sqft</b>	2,630	<b>PPSF</b>	\$3,366	<b>Beds</b>	4	<b>Baths</b>	4.5
<b>Fees</b>	\$7,815	<b>DOM</b>	N/A				



## 200 E 83 ST # 10B

Upper East Side

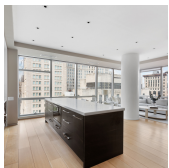
<b>Type</b>	Condo	<b>Status</b>	Contract	<b>Ask</b>	\$8,650,000	<b>Initial</b>	N/A
<b>Sqft</b>	3,061	<b>PPSF</b>	\$2,826	<b>Beds</b>	4	<b>Baths</b>	4.5
<b>Fees</b>	\$9,377	<b>DOM</b>	N/A				



## 378 W END AVE # 12A

Upper West Side

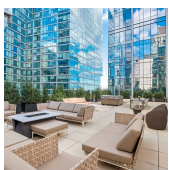
<b>Type</b>	Condo	<b>Status</b>	Contract	<b>Ask</b>	\$8,450,000	<b>Initial</b>	N/A
<b>Sqft</b>	2,888	<b>PPSF</b>	\$2,926	<b>Beds</b>	4	<b>Baths</b>	4.5
<b>Fees</b>	\$7,368	<b>DOM</b>	N/A				



## 22 E 23 ST # 21A

Flatiron District

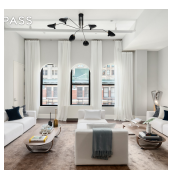
<b>Type</b>	Condo	<b>Status</b>	Contract	<b>Ask</b>	\$7,995,000	<b>Initial</b>	\$8,950,000
<b>Sqft</b>	3,310	<b>PPSF</b>	\$2,416	<b>Beds</b>	4	<b>Baths</b>	3
<b>Fees</b>	\$9,825	<b>DOM</b>	480				



## 50 RIVERSIDE BLVD # 8N

Lincoln Square

<b>Type</b>	Condo	<b>Status</b>	Contract	<b>Ask</b>	\$7,995,000	<b>Initial</b>	\$7,995,000
<b>Sqft</b>	3,703	<b>PPSF</b>	\$2,160	<b>Beds</b>	5	<b>Baths</b>	6
<b>Fees</b>	\$5,223	<b>DOM</b>	13				



## 285 LAFAYETTE ST # 6B

Nolita

<b>Type</b>	Condo	<b>Status</b>	Contract	<b>Ask</b>	\$7,499,000	<b>Initial</b>	\$7,499,000
<b>Sqft</b>	3,750	<b>PPSF</b>	\$2,000	<b>Beds</b>	3	<b>Baths</b>	3
<b>Fees</b>	\$10,100	<b>DOM</b>	38				

Compass is a licensed real estate broker and abides by Equal Housing Opportunity laws. All material presented herein is intended for informational purposes only. Information is compiled from sources deemed reliable but is subject to errors, omissions, changes in price, condition, sale, or withdrawal without notice. No statement is made as to the accuracy of any description. All measurements and square footages are approximate. This is not intended to solicit property already listed. Nothing herein shall be construed as legal, accounting or other professional advice outside the realm of real estate brokerage.



## 200 E 83 ST # 30B

Upper East Side

<b>Type</b>	Condo	<b>Status</b>	Contract	<b>Ask</b>	\$7,475,000	<b>Initial</b>	N/A
<b>Sqft</b>	2,263	<b>PPSF</b>	\$3,304	<b>Beds</b>	3	<b>Baths</b>	3.5
<b>Fees</b>	\$6,724	<b>DOM</b>	N/A				



## 200 AMSTERDAM AVE #14A

Upper West Side

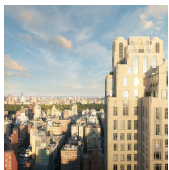
<b>Type</b>	Condo	<b>Status</b>	Contract	<b>Ask</b>	\$7,375,000	<b>Initial</b>	\$7,375,000
<b>Sqft</b>	2,856	<b>PPSF</b>	\$2,583	<b>Beds</b>	4	<b>Baths</b>	4.5
<b>Fees</b>	\$7,658	<b>DOM</b>	772				



## 200 E 83 ST # 29B

Upper East Side

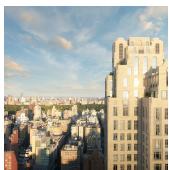
<b>Type</b>	Condo	<b>Status</b>	Contract	<b>Ask</b>	\$7,350,000	<b>Initial</b>	N/A
<b>Sqft</b>	2,263	<b>PPSF</b>	\$3,248	<b>Beds</b>	3	<b>Baths</b>	3.5
<b>Fees</b>	\$6,724	<b>DOM</b>	N/A				



## 200 E 83 ST # 28B

Upper East Side

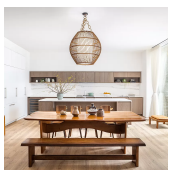
<b>Type</b>	Condo	<b>Status</b>	Contract	<b>Ask</b>	\$7,225,000	<b>Initial</b>	N/A
<b>Sqft</b>	2,263	<b>PPSF</b>	\$3,193	<b>Beds</b>	3	<b>Baths</b>	3.5
<b>Fees</b>	\$6,724	<b>DOM</b>	N/A				



## 200 E 83 ST # 27B

Upper East Side

<b>Type</b>	Condo	<b>Status</b>	Contract	<b>Ask</b>	\$7,100,000	<b>Initial</b>	N/A
<b>Sqft</b>	2,263	<b>PPSF</b>	\$3,138	<b>Beds</b>	3	<b>Baths</b>	3.5
<b>Fees</b>	\$6,724	<b>DOM</b>	N/A				

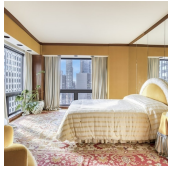


## 532 W 20 ST # 8

Chelsea

<b>Type</b>	Condo	<b>Status</b>	Contract	<b>Ask</b>	\$6,800,000	<b>Initial</b>	\$6,800,000
<b>Sqft</b>	2,694	<b>PPSF</b>	\$2,525	<b>Beds</b>	3	<b>Baths</b>	3.5
<b>Fees</b>	\$11,495	<b>DOM</b>	9				

Compass is a licensed real estate broker and abides by Equal Housing Opportunity laws. All material presented herein is intended for informational purposes only. Information is compiled from sources deemed reliable but is subject to errors, omissions, changes in price, condition, sale, or withdrawal without notice. No statement is made as to the accuracy of any description. All measurements and square footages are approximate. This is not intended to solicit property already listed. Nothing herein shall be construed as legal, accounting or other professional advice outside the realm of real estate brokerage.



## 721 5 AVE #41EFG

Midtown

<b>Type</b>	Condo	<b>Status</b>	Contract	<b>Ask</b>	\$6,700,000	<b>Initial</b>	N/A
<b>Sqft</b>	3,704	<b>PPSF</b>	\$1,809	<b>Beds</b>	5	<b>Baths</b>	3
<b>Fees</b>	\$16,467	<b>DOM</b>	N/A				



## 200 E 83 ST #26C

Upper East Side

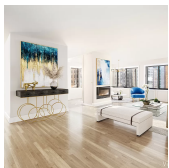
<b>Type</b>	Condo	<b>Status</b>	Contract	<b>Ask</b>	\$6,500,000	<b>Initial</b>	N/A
<b>Sqft</b>	2,123	<b>PPSF</b>	\$3,062	<b>Beds</b>	3	<b>Baths</b>	3.5
<b>Fees</b>	\$6,308	<b>DOM</b>	N/A				



## 200 E 83 ST #25C

Upper East Side

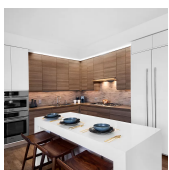
<b>Type</b>	Condo	<b>Status</b>	Contract	<b>Ask</b>	\$6,400,000	<b>Initial</b>	N/A
<b>Sqft</b>	2,123	<b>PPSF</b>	\$3,015	<b>Beds</b>	3	<b>Baths</b>	3.5
<b>Fees</b>	\$6,308	<b>DOM</b>	N/A				



## 900 PK AVE #7C

Upper East Side

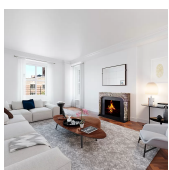
<b>Type</b>	Condo	<b>Status</b>	Contract	<b>Ask</b>	\$5,995,000	<b>Initial</b>	\$5,995,000
<b>Sqft</b>	3,350	<b>PPSF</b>	\$1,790	<b>Beds</b>	4	<b>Baths</b>	4.5
<b>Fees</b>	\$11,325	<b>DOM</b>	20				



## 285 W 110 ST #8C

Harlem

<b>Type</b>	Condo	<b>Status</b>	Contract	<b>Ask</b>	\$5,995,000	<b>Initial</b>	\$5,995,000
<b>Sqft</b>	2,126	<b>PPSF</b>	\$2,820	<b>Beds</b>	4	<b>Baths</b>	3
<b>Fees</b>	\$3,438	<b>DOM</b>	649				



## 755 PK AVE #4C

Lenox Hill

<b>Type</b>	Coop	<b>Status</b>	Contract	<b>Ask</b>	\$5,799,000	<b>Initial</b>	\$6,495,000
<b>Sqft</b>	3,100	<b>PPSF</b>	\$1,871	<b>Beds</b>	4	<b>Baths</b>	3.5
<b>Fees</b>	\$7,196	<b>DOM</b>	366				

Compass is a licensed real estate broker and abides by Equal Housing Opportunity laws. All material presented herein is intended for informational purposes only. Information is compiled from sources deemed reliable but is subject to errors, omissions, changes in price, condition, sale, or withdrawal without notice. No statement is made as to the accuracy of any description. All measurements and square footages are approximate. This is not intended to solicit property already listed. Nothing herein shall be construed as legal, accounting or other professional advice outside the realm of real estate brokerage.





## 149 E 73 ST # 5A

Lenox Hill

<b>Type</b>	Coop	<b>Status</b>	Contract	<b>Ask</b>	\$5,750,000	<b>Initial</b>	\$5,750,000
<b>Sqft</b>	3,250	<b>PPSF</b>	\$1,770	<b>Beds</b>	4	<b>Baths</b>	4
<b>Fees</b>	\$8,273	<b>DOM</b>	20				



## 15 W 53 ST # 33BC

Midtown

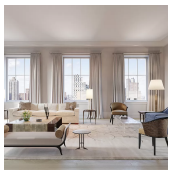
<b>Type</b>	Condo	<b>Status</b>	Contract	<b>Ask</b>	\$5,750,000	<b>Initial</b>	\$5,750,000
<b>Sqft</b>	2,917	<b>PPSF</b>	\$1,972	<b>Beds</b>	3	<b>Baths</b>	4.5
<b>Fees</b>	\$9,787	<b>DOM</b>	37				



## 200 E 83 ST # 26 B

Upper East Side

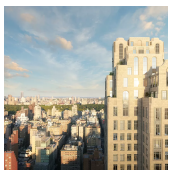
<b>Type</b>	Condo	<b>Status</b>	Contract	<b>Ask</b>	\$5,750,000	<b>Initial</b>	N/A
<b>Sqft</b>	1,900	<b>PPSF</b>	\$3,027	<b>Beds</b>	3	<b>Baths</b>	3.5
<b>Fees</b>	\$5,646	<b>DOM</b>	N/A				



## 301 E 80 ST # 6 C

Yorkville

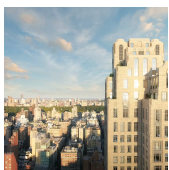
<b>Type</b>	Condo	<b>Status</b>	Contract	<b>Ask</b>	\$5,600,000	<b>Initial</b>	\$5,600,000
<b>Sqft</b>	2,424	<b>PPSF</b>	\$2,311	<b>Beds</b>	3	<b>Baths</b>	3.5
<b>Fees</b>	\$6,382	<b>DOM</b>	8				



## 200 E 83 ST # 6 C

Upper East Side

<b>Type</b>	Condo	<b>Status</b>	Contract	<b>Ask</b>	\$5,590,000	<b>Initial</b>	N/A
<b>Sqft</b>	2,336	<b>PPSF</b>	\$2,393	<b>Beds</b>	4	<b>Baths</b>	3.5
<b>Fees</b>	\$6,942	<b>DOM</b>	N/A				



## 200 E 83 ST # 24 B

Upper East Side

<b>Type</b>	Condo	<b>Status</b>	Contract	<b>Ask</b>	\$5,550,000	<b>Initial</b>	N/A
<b>Sqft</b>	1,900	<b>PPSF</b>	\$2,922	<b>Beds</b>	3	<b>Baths</b>	3.5
<b>Fees</b>	\$5,646	<b>DOM</b>	N/A				

Compass is a licensed real estate broker and abides by Equal Housing Opportunity laws. All material presented herein is intended for informational purposes only. Information is compiled from sources deemed reliable but is subject to errors, omissions, changes in price, condition, sale, or withdrawal without notice. No statement is made as to the accuracy of any description. All measurements and square footages are approximate. This is not intended to solicit property already listed. Nothing herein shall be construed as legal, accounting or other professional advice outside the realm of real estate brokerage.

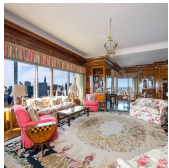




## 108 LEONARD #14 A

Tribeca

<b>Type</b>	Condo	<b>Status</b>	Contract	<b>Ask</b>	\$5,545,000	<b>Initial</b>	N/A
<b>Sqft</b>	22,174	<b>PPSF</b>	\$251	<b>Beds</b>	2	<b>Baths</b>	2.5
<b>Fees</b>	\$5,255	<b>DOM</b>	N/A				



## 200 E 69 ST #GRANDPH

Lenox Hill

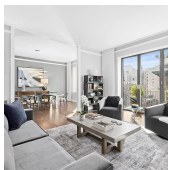
<b>Type</b>	Condo	<b>Status</b>	Contract	<b>Ask</b>	\$5,500,000	<b>Initial</b>	\$11,500,000
<b>Sqft</b>	3,205	<b>PPSF</b>	\$1,717	<b>Beds</b>	3	<b>Baths</b>	3.5
<b>Fees</b>	\$18,391	<b>DOM</b>	368				



## 200 E 83 ST #11B

Upper East Side

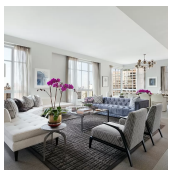
<b>Type</b>	Condo	<b>Status</b>	Contract	<b>Ask</b>	\$5,500,000	<b>Initial</b>	N/A
<b>Sqft</b>	2,130	<b>PPSF</b>	\$2,583	<b>Beds</b>	3	<b>Baths</b>	3.5
<b>Fees</b>	\$6,329	<b>DOM</b>	N/A				



## 145 E 76 ST #9B

Lenox Hill

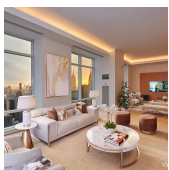
<b>Type</b>	Condo	<b>Status</b>	Contract	<b>Ask</b>	\$5,495,000	<b>Initial</b>	\$5,495,000
<b>Sqft</b>	2,393	<b>PPSF</b>	\$2,297	<b>Beds</b>	4	<b>Baths</b>	3.5
<b>Fees</b>	\$6,900	<b>DOM</b>	41				



## 200 E 95 ST #12B

Yorkville

<b>Type</b>	Condo	<b>Status</b>	Contract	<b>Ask</b>	\$5,495,000	<b>Initial</b>	\$6,261,000
<b>Sqft</b>	2,735	<b>PPSF</b>	\$2,010	<b>Beds</b>	4	<b>Baths</b>	4.5
<b>Fees</b>	\$3,720	<b>DOM</b>	470				



## 845 1 AVE #78B

Midtown East

<b>Type</b>	Condo	<b>Status</b>	Contract	<b>Ask</b>	\$5,400,000	<b>Initial</b>	\$6,200,000
<b>Sqft</b>	2,854	<b>PPSF</b>	\$1,893	<b>Beds</b>	3	<b>Baths</b>	2.5
<b>Fees</b>	\$10,413	<b>DOM</b>	366				

Compass is a licensed real estate broker and abides by Equal Housing Opportunity laws. All material presented herein is intended for informational purposes only. Information is compiled from sources deemed reliable but is subject to errors, omissions, changes in price, condition, sale, or withdrawal without notice. No statement is made as to the accuracy of any description. All measurements and square footages are approximate. This is not intended to solicit property already listed. Nothing herein shall be construed as legal, accounting or other professional advice outside the realm of real estate brokerage.



## 269 W 87 ST #TH1

Upper West Side

<b>Type</b>	Condo	<b>Status</b>	Contract	<b>Ask</b>	\$5,400,000	<b>Initial</b>	N/A
<b>Sqft</b>	3,749	<b>PPSF</b>	\$1,441	<b>Beds</b>	4	<b>Baths</b>	4.5
<b>Fees</b>	\$23,375	<b>DOM</b>	N/A				



## 200 E 83 ST #12B

Upper East Side

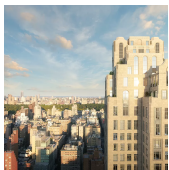
<b>Type</b>	Condo	<b>Status</b>	Contract	<b>Ask</b>	\$5,350,000	<b>Initial</b>	N/A
<b>Sqft</b>	2,089	<b>PPSF</b>	\$2,562	<b>Beds</b>	3	<b>Baths</b>	3.5
<b>Fees</b>	\$6,224	<b>DOM</b>	N/A				



## 200 E 83 ST #16B

Upper East Side

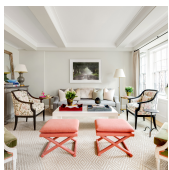
<b>Type</b>	Condo	<b>Status</b>	Contract	<b>Ask</b>	\$5,350,000	<b>Initial</b>	N/A
<b>Sqft</b>	2,089	<b>PPSF</b>	\$2,562	<b>Beds</b>	3	<b>Baths</b>	3.5
<b>Fees</b>	\$6,208	<b>DOM</b>	N/A				



## 200 E 83 ST #15B

Upper East Side

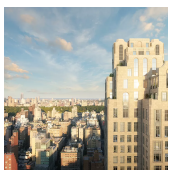
<b>Type</b>	Condo	<b>Status</b>	Contract	<b>Ask</b>	\$5,300,000	<b>Initial</b>	N/A
<b>Sqft</b>	2,089	<b>PPSF</b>	\$2,538	<b>Beds</b>	3	<b>Baths</b>	3.5
<b>Fees</b>	\$6,208	<b>DOM</b>	N/A				



## 141 E 88 ST #3F

Carnegie Hill

<b>Type</b>	Condo	<b>Status</b>	Contract	<b>Ask</b>	\$5,250,000	<b>Initial</b>	\$5,250,000
<b>Sqft</b>	2,650	<b>PPSF</b>	\$1,982	<b>Beds</b>	4	<b>Baths</b>	4
<b>Fees</b>	\$6,049	<b>DOM</b>	191				



## 200 E 83 ST #14B

Upper East Side

<b>Type</b>	Condo	<b>Status</b>	Contract	<b>Ask</b>	\$5,250,000	<b>Initial</b>	N/A
<b>Sqft</b>	2,089	<b>PPSF</b>	\$2,514	<b>Beds</b>	3	<b>Baths</b>	3.5
<b>Fees</b>	\$6,208	<b>DOM</b>	N/A				

Compass is a licensed real estate broker and abides by Equal Housing Opportunity laws. All material presented herein is intended for informational purposes only. Information is compiled from sources deemed reliable but is subject to errors, omissions, changes in price, condition, sale, or withdrawal without notice. No statement is made as to the accuracy of any description. All measurements and square footages are approximate. This is not intended to solicit property already listed. Nothing herein shall be construed as legal, accounting or other professional advice outside the realm of real estate brokerage.



## 35 W 23 ST # 4

Flatiron District

<b>Type</b>	Condo	<b>Status</b>	Contract	<b>Ask</b>	\$4,999,999	<b>Initial</b>	\$5,400,000
<b>Sqft</b>	3,400	<b>PPSF</b>	\$1,471	<b>Beds</b>	3	<b>Baths</b>	2.5
<b>Fees</b>	\$6,083	<b>DOM</b>	601				



## 200 E 83 ST #12C

Upper East Side

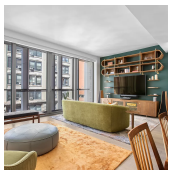
<b>Type</b>	Condo	<b>Status</b>	Contract	<b>Ask</b>	\$4,900,000	<b>Initial</b>	N/A
<b>Sqft</b>	1,864	<b>PPSF</b>	\$2,629	<b>Beds</b>	3	<b>Baths</b>	3
<b>Fees</b>	\$5,539	<b>DOM</b>	N/A				



## 200 E 83 ST #11C

Upper East Side

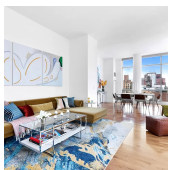
<b>Type</b>	Condo	<b>Status</b>	Contract	<b>Ask</b>	\$4,850,000	<b>Initial</b>	N/A
<b>Sqft</b>	1,864	<b>PPSF</b>	\$2,602	<b>Beds</b>	3	<b>Baths</b>	3
<b>Fees</b>	\$5,539	<b>DOM</b>	N/A				



## 688 BROADWAY # 6 A

Noho

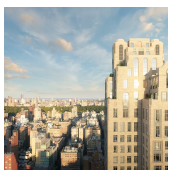
<b>Type</b>	Condo	<b>Status</b>	Contract	<b>Ask</b>	\$4,795,000	<b>Initial</b>	\$4,795,000
<b>Sqft</b>	1,778	<b>PPSF</b>	\$2,697	<b>Beds</b>	2	<b>Baths</b>	2
<b>Fees</b>	\$6,471	<b>DOM</b>	14				



## 300 E 79 ST # PHB

Lenox Hill

<b>Type</b>	Condo	<b>Status</b>	Contract	<b>Ask</b>	\$4,675,000	<b>Initial</b>	\$4,675,000
<b>Sqft</b>	2,465	<b>PPSF</b>	\$1,897	<b>Beds</b>	3	<b>Baths</b>	3.5
<b>Fees</b>	\$8,333	<b>DOM</b>	63				

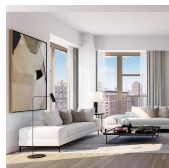


## 200 E 83 ST # 26 A

Upper East Side

<b>Type</b>	Condo	<b>Status</b>	Contract	<b>Ask</b>	\$4,625,000	<b>Initial</b>	N/A
<b>Sqft</b>	1,507	<b>PPSF</b>	\$3,070	<b>Beds</b>	2	<b>Baths</b>	2.5
<b>Fees</b>	\$4,478	<b>DOM</b>	N/A				

Compass is a licensed real estate broker and abides by Equal Housing Opportunity laws. All material presented herein is intended for informational purposes only. Information is compiled from sources deemed reliable but is subject to errors, omissions, changes in price, condition, sale, or withdrawal without notice. No statement is made as to the accuracy of any description. All measurements and square footages are approximate. This is not intended to solicit property already listed. Nothing herein shall be construed as legal, accounting or other professional advice outside the realm of real estate brokerage.



## 251 W 91 ST #14D

Upper West Side

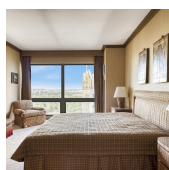
<b>Type</b>	Condo	<b>Status</b>	Contract	<b>Ask</b>	\$4,625,000	<b>Initial</b>	N/A
<b>Sqft</b>	1,837	<b>PPSF</b>	\$2,518	<b>Beds</b>	3	<b>Baths</b>	3.5
<b>Fees</b>	\$4,032	<b>DOM</b>	N/A				



## 200 E 83 ST #8D

Upper East Side

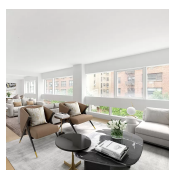
<b>Type</b>	Condo	<b>Status</b>	Contract	<b>Ask</b>	\$4,590,000	<b>Initial</b>	N/A
<b>Sqft</b>	1,959	<b>PPSF</b>	\$2,344	<b>Beds</b>	3	<b>Baths</b>	3
<b>Fees</b>	\$5,821	<b>DOM</b>	N/A				



## 721 5 AVE #41FG

Midtown

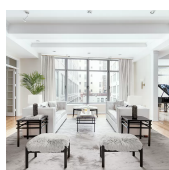
<b>Type</b>	Condo	<b>Status</b>	Contract	<b>Ask</b>	\$4,500,000	<b>Initial</b>	N/A
<b>Sqft</b>	2,579	<b>PPSF</b>	\$1,745	<b>Beds</b>	4	<b>Baths</b>	3
<b>Fees</b>	\$11,464	<b>DOM</b>	N/A				



## 176 E 82 ST #5

Upper East Side

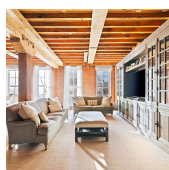
<b>Type</b>	Condo	<b>Status</b>	Contract	<b>Ask</b>	\$4,500,000	<b>Initial</b>	N/A
<b>Sqft</b>	2,371	<b>PPSF</b>	\$1,898	<b>Beds</b>	4	<b>Baths</b>	3.5
<b>Fees</b>	\$5,920	<b>DOM</b>	N/A				



## 252 7 AVE #6A

Chelsea

<b>Type</b>	Condo	<b>Status</b>	Contract	<b>Ask</b>	\$4,495,000	<b>Initial</b>	\$4,495,000
<b>Sqft</b>	4,343	<b>PPSF</b>	\$1,035	<b>Beds</b>	4	<b>Baths</b>	4
<b>Fees</b>	\$7,647	<b>DOM</b>	40				

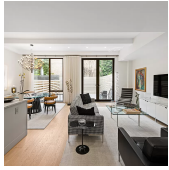


## 387 GREENWICH ST #2D

West Village

<b>Type</b>	Condo	<b>Status</b>	Contract	<b>Ask</b>	\$4,495,000	<b>Initial</b>	\$4,495,000
<b>Sqft</b>	2,415	<b>PPSF</b>	\$1,862	<b>Beds</b>	2	<b>Baths</b>	2.5
<b>Fees</b>	\$4,714	<b>DOM</b>	35				

Compass is a licensed real estate broker and abides by Equal Housing Opportunity laws. All material presented herein is intended for informational purposes only. Information is compiled from sources deemed reliable but is subject to errors, omissions, changes in price, condition, sale, or withdrawal without notice. No statement is made as to the accuracy of any description. All measurements and square footages are approximate. This is not intended to solicit property already listed. Nothing herein shall be construed as legal, accounting or other professional advice outside the realm of real estate brokerage.



## 163 E 62 ST #THE

Lenox Hill

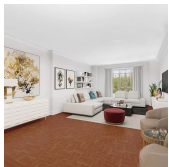
<b>Type</b>	Condo	<b>Status</b>	Contract	<b>Ask</b>	\$4,350,000	<b>Initial</b>	\$5,195,000
<b>Sqft</b>	2,400	<b>PPSF</b>	\$1,813	<b>Beds</b>	4	<b>Baths</b>	4
<b>Fees</b>	\$4,926	<b>DOM</b>	99				



## 200 E 83 ST #22A

Upper East Side

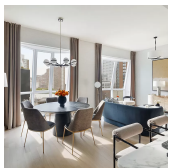
<b>Type</b>	Condo	<b>Status</b>	Contract	<b>Ask</b>	\$4,325,000	<b>Initial</b>	N/A
<b>Sqft</b>	1,507	<b>PPSF</b>	\$2,870	<b>Beds</b>	2	<b>Baths</b>	2.5
<b>Fees</b>	\$4,490	<b>DOM</b>	N/A				



## 25 CPW #6J

Lincoln Square

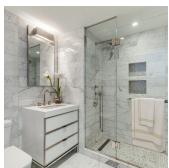
<b>Type</b>	Condo	<b>Status</b>	Contract	<b>Ask</b>	\$4,250,000	<b>Initial</b>	\$4,250,000
<b>Sqft</b>	2,280	<b>PPSF</b>	\$1,865	<b>Beds</b>	3	<b>Baths</b>	3
<b>Fees</b>	\$6,751	<b>DOM</b>	19				



## 515 W 18 ST #1103

Chelsea

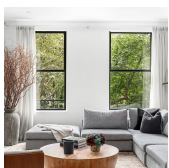
<b>Type</b>	Condo	<b>Status</b>	Contract	<b>Ask</b>	\$4,195,000	<b>Initial</b>	\$4,195,000
<b>Sqft</b>	1,431	<b>PPSF</b>	\$2,932	<b>Beds</b>	2	<b>Baths</b>	2.5
<b>Fees</b>	\$4,506	<b>DOM</b>	324				



## 135 W 52 ST #26B

Midtown

<b>Type</b>	Condo	<b>Status</b>	Contract	<b>Ask</b>	\$3,995,000	<b>Initial</b>	\$4,399,000
<b>Sqft</b>	2,207	<b>PPSF</b>	\$1,811	<b>Beds</b>	3	<b>Baths</b>	3
<b>Fees</b>	\$5,946	<b>DOM</b>	151				



## 225 5 AVE #3M

Nomad

<b>Type</b>	Condo	<b>Status</b>	Contract	<b>Ask</b>	\$3,995,000	<b>Initial</b>	\$3,995,000
<b>Sqft</b>	1,591	<b>PPSF</b>	\$2,511	<b>Beds</b>	2	<b>Baths</b>	2.5
<b>Fees</b>	\$4,587	<b>DOM</b>	76				

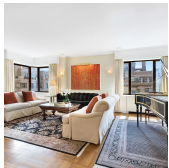
Compass is a licensed real estate broker and abides by Equal Housing Opportunity laws. All material presented herein is intended for informational purposes only. Information is compiled from sources deemed reliable but is subject to errors, omissions, changes in price, condition, sale, or withdrawal without notice. No statement is made as to the accuracy of any description. All measurements and square footages are approximate. This is not intended to solicit property already listed. Nothing herein shall be construed as legal, accounting or other professional advice outside the realm of real estate brokerage.



## 5 GREAT JONES ST # 3

Noho

<b>Type</b>	Coop	<b>Status</b>	Contract	<b>Ask</b>	\$3,995,000	<b>Initial</b>	\$3,995,000
<b>Sqft</b>	2,300	<b>PPSF</b>	\$1,737	<b>Beds</b>	2	<b>Baths</b>	3
<b>Fees</b>	\$909	<b>DOM</b>	9				



## 19 E 88 ST # PHA

Carnegie Hill

<b>Type</b>	Coop	<b>Status</b>	Contract	<b>Ask</b>	\$3,995,000	<b>Initial</b>	\$4,650,000
<b>Sqft</b>	N/A	<b>PPSF</b>	N/A	<b>Beds</b>	3	<b>Baths</b>	3
<b>Fees</b>	\$5,614	<b>DOM</b>	772				



## 269 W 87 ST # 9A

Upper West Side

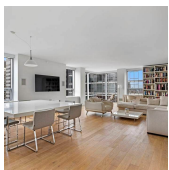
<b>Type</b>	Condo	<b>Status</b>	Contract	<b>Ask</b>	\$3,840,000	<b>Initial</b>	\$3,840,000
<b>Sqft</b>	2,743	<b>PPSF</b>	\$1,400	<b>Beds</b>	4	<b>Baths</b>	4
<b>Fees</b>	\$7,383	<b>DOM</b>	199				



## 30 RIVERSIDE BLVD # 33G

Lincoln Square

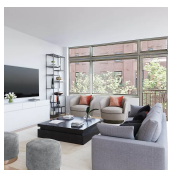
<b>Type</b>	Condo	<b>Status</b>	Contract	<b>Ask</b>	\$3,830,000	<b>Initial</b>	\$3,830,000
<b>Sqft</b>	1,419	<b>PPSF</b>	\$2,700	<b>Beds</b>	2	<b>Baths</b>	2
<b>Fees</b>	\$2,071	<b>DOM</b>	195				



## 15 W 53 ST # 33B

Midtown

<b>Type</b>	Condo	<b>Status</b>	Contract	<b>Ask</b>	\$3,750,000	<b>Initial</b>	\$3,750,000
<b>Sqft</b>	1,917	<b>PPSF</b>	\$1,957	<b>Beds</b>	2	<b>Baths</b>	2
<b>Fees</b>	\$5,889	<b>DOM</b>	37				



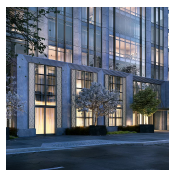
## 99 JANE ST # 3C

West Village

<b>Type</b>	Condo	<b>Status</b>	Contract	<b>Ask</b>	\$3,750,000	<b>Initial</b>	\$3,750,000
<b>Sqft</b>	1,672	<b>PPSF</b>	\$2,243	<b>Beds</b>	3	<b>Baths</b>	2
<b>Fees</b>	\$4,193	<b>DOM</b>	39				

Compass is a licensed real estate broker and abides by Equal Housing Opportunity laws. All material presented herein is intended for informational purposes only. Information is compiled from sources deemed reliable but is subject to errors, omissions, changes in price, condition, sale, or withdrawal without notice. No statement is made as to the accuracy of any description. All measurements and square footages are approximate. This is not intended to solicit property already listed. Nothing herein shall be construed as legal, accounting or other professional advice outside the realm of real estate brokerage.

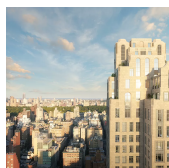




## 200 AMSTERDAM AVE # 8 B

Upper West Side

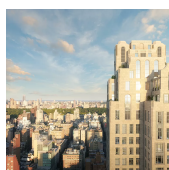
<b>Type</b>	Condo	<b>Status</b>	Contract	<b>Ask</b>	\$3,750,000	<b>Initial</b>	\$3,750,000
<b>Sqft</b>	1,812	<b>PPSF</b>	\$2,070	<b>Beds</b>	2	<b>Baths</b>	2.5
<b>Fees</b>	\$4,667	<b>DOM</b>	87				



## 200 E 83 ST # 16 A

Upper East Side

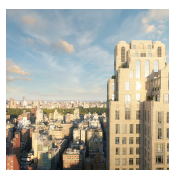
<b>Type</b>	Condo	<b>Status</b>	Contract	<b>Ask</b>	\$3,725,000	<b>Initial</b>	N/A
<b>Sqft</b>	1,511	<b>PPSF</b>	\$2,466	<b>Beds</b>	2	<b>Baths</b>	2.5
<b>Fees</b>	\$4,490	<b>DOM</b>	N/A				



## 200 E 83 ST # 15 A

Upper East Side

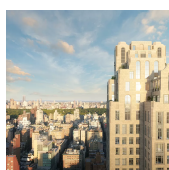
<b>Type</b>	Condo	<b>Status</b>	Contract	<b>Ask</b>	\$3,700,000	<b>Initial</b>	N/A
<b>Sqft</b>	1,511	<b>PPSF</b>	\$2,449	<b>Beds</b>	2	<b>Baths</b>	2.5
<b>Fees</b>	\$4,490	<b>DOM</b>	N/A				



## 200 E 83 ST # 12 A

Upper East Side

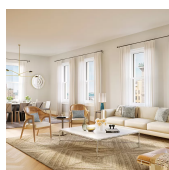
<b>Type</b>	Condo	<b>Status</b>	Contract	<b>Ask</b>	\$3,650,000	<b>Initial</b>	N/A
<b>Sqft</b>	1,511	<b>PPSF</b>	\$2,416	<b>Beds</b>	2	<b>Baths</b>	2.5
<b>Fees</b>	\$4,490	<b>DOM</b>	N/A				



## 200 E 83 ST # 11 A

Upper East Side

<b>Type</b>	Condo	<b>Status</b>	Contract	<b>Ask</b>	\$3,625,000	<b>Initial</b>	N/A
<b>Sqft</b>	1,511	<b>PPSF</b>	\$2,400	<b>Beds</b>	2	<b>Baths</b>	2.5
<b>Fees</b>	\$4,490	<b>DOM</b>	N/A				



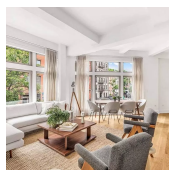
## 378 W END AVE # 3 E

Upper West Side

<b>Type</b>	Condo	<b>Status</b>	Contract	<b>Ask</b>	\$3,600,000	<b>Initial</b>	\$3,600,000
<b>Sqft</b>	1,567	<b>PPSF</b>	\$2,298	<b>Beds</b>	2	<b>Baths</b>	2
<b>Fees</b>	\$3,998	<b>DOM</b>	191				

Compass is a licensed real estate broker and abides by Equal Housing Opportunity laws. All material presented herein is intended for informational purposes only. Information is compiled from sources deemed reliable but is subject to errors, omissions, changes in price, condition, sale, or withdrawal without notice. No statement is made as to the accuracy of any description. All measurements and square footages are approximate. This is not intended to solicit property already listed. Nothing herein shall be construed as legal, accounting or other professional advice outside the realm of real estate brokerage.





## 147 WAVERLY PL #2W

West Village

<b>Type</b>	Condo	<b>Status</b>	Contract	<b>Ask</b>	\$3,550,000	<b>Initial</b>	\$3,650,000
<b>Sqft</b>	1,459	<b>PPSF</b>	\$2,434	<b>Beds</b>	2	<b>Baths</b>	2
<b>Fees</b>	\$4,525	<b>DOM</b>	72				



## 1001 PK AVE #12S

Upper East Side

<b>Type</b>	Coop	<b>Status</b>	Contract	<b>Ask</b>	\$3,500,000	<b>Initial</b>	\$3,500,000
<b>Sqft</b>	N/A	<b>PPSF</b>	N/A	<b>Beds</b>	3	<b>Baths</b>	2.5
<b>Fees</b>	\$7,892	<b>DOM</b>	167				

Compass is a licensed real estate broker and abides by Equal Housing Opportunity laws. All material presented herein is intended for informational purposes only. Information is compiled from sources deemed reliable but is subject to errors, omissions, changes in price, condition, sale, or withdrawal without notice. No statement is made as to the accuracy of any description. All measurements and square footages are approximate. This is not intended to solicit property already listed. Nothing herein shall be construed as legal, accounting or other professional advice outside the realm of real estate brokerage.