

MAR 7 - 13, 2022

The Brooklyn luxury real estate market, defined as all properties priced \$2M and above, saw 39 contracts signed this week, made up of 19 condos, 1 coop, and 19 houses. The previous week saw 40 deals. For more information or data, please reach out to a Compass agent.

\$3,355,474

Average Asking Price

\$2,600,000

Median Asking Price

\$1,503

Average PPSF

1%

Average Discount

\$130,863,485

Total Volume

60

Average Days On Market

16 Remsen Street in Brooklyn Heights entered contract this week, with a last asking price of \$10,900,000. This 26-foot wide, 5-story townhouse spans approximately 6,500 square feet with 6 beds and 5 full baths. It features multiple formal and casual entertainment and eating spaces, a roof deck with Manhattan views, a wine tasting room and large wine cellar, a landscaped brick patio and garden, a primary suite with a balcony, two dressing rooms, and a fireplace, an original stained glass skylight, and much more.

Also signed this week was Unit 26A at 30 Front Street in DUMBO, with a last asking price of \$7,550,000. Built in 2021, this condo spans 3,088 square feet with 4 beds and 3 full baths. It features a private 458 square foot river-facing terrace, a custom-designed kitchen with high-end appliances and stone slab island, a primary suite with en-suite bathroom and two large walk-in closets, and much more. The building provides a 24-hour doorman and concierge, a package room, a state-of-the-art fitness center, indoor and outdoor pools, a full-size tennis court, and many other amenities.

19

Condo Deal(s)

1

Co-op Deal(s)

19

Townhouse Deal(s)

\$2,954,155

Average Asking Price

\$2,521,545

Average Asking Price

\$3,800,685

Average Asking Price

\$2,250,000

Median Asking Price

\$2,521,545

Median Asking Price

\$2,700,000

Median Asking Price

\$1,676

Average PPSF

\$2,121

Average PPSF

\$1,241

Average PPSF

1,749

Average SqFt

1,189

Average SqFt

3,154

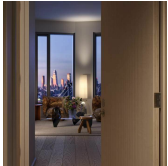
Average SqFt



16 REMSEN ST

Brooklyn Heights

Type	Townhouse	Status	Contract	Ask	\$10,900,000
SqFt	6,500	Beds	6	Baths	5
PPSF	\$1,677	Fees	\$3,109	DOM	182



30 FRONT ST #26A

Dumbo

Type	Condo	Status	Contract	Ask	\$7,550,000
SqFt	3,088	Beds	4	Baths	3
PPSF	\$2,445	Fees	\$6,152	DOM	N/A



459 HENRY ST

Cobble Hill

Type	Townhouse	Status	Contract	Ask	\$6,995,000
SqFt	3,520	Beds	5	Baths	4.5
PPSF	\$1,988	Fees	\$2,536	DOM	15



32 COLLEGE PL

Brooklyn Heights

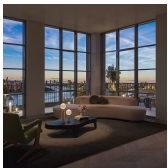
Type	Townhouse	Status	Contract	Ask	\$6,950,000
SqFt	N/A	Beds	4	Baths	2.5
PPSF	N/A	Fees	\$2,015	DOM	N/A



60 JORALEMON ST

Brooklyn Heights

Type	Townhouse	Status	Contract	Ask	\$5,999,000
SqFt	3,280	Beds	6	Baths	3.5
PPSF	\$1,829	Fees	\$1,682	DOM	31



85 JAY ST #PH20A-FRONT

Dumbo

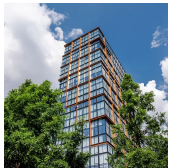
Type	Condo	Status	Contract	Ask	\$5,495,000
SqFt	1,847	Beds	3	Baths	2.5
PPSF	\$2,976	Fees	\$4,530	DOM	N/A

Compass is a licensed real estate broker and abides by Equal Housing Opportunity laws. All material presented herein is intended for informational purposes only. Information is compiled from sources deemed reliable but is subject to errors, omissions, changes in price, condition, sale, or withdrawal without notice. No statement is made as to the accuracy of any description. All measurements and square footages are approximate. This is not intended to solicit property already listed. Nothing herein shall be construed as legal, accounting or other professional advice outside the realm of real estate brokerage.

317A STATE ST

Upper West Side

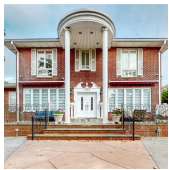
Type	Townhouse	Status	Contract	Ask	\$4,500,000
Sqft	3,750	Beds	5	Baths	5
PPSF	\$1,200	Fees	\$1,288	DOM	N/A



50 BRIDGE PK DR #6A

Brooklyn Heights

Type	Condo	Status	Contract	Ask	\$4,250,000
Sqft	2,487	Beds	4	Baths	3.5
PPSF	\$1,709	Fees	\$4,727	DOM	64



125 EXETER ST

Manhattan Beach

Type	Townhouse	Status	Contract	Ask	\$3,900,000
Sqft	3,500	Beds	5	Baths	5
PPSF	\$1,114	Fees	\$1,544	DOM	146



463 1 ST

Park Slope

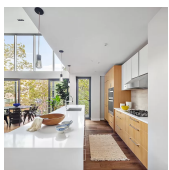
Type	Townhouse	Status	Contract	Ask	\$3,750,000
Sqft	N/A	Beds	5	Baths	3
PPSF	N/A	Fees	\$1,020	DOM	46



1080 LORIMER ST #PHA

Greenpoint

Type	Condo	Status	Contract	Ask	\$3,350,000
Sqft	1,468	Beds	3	Baths	2
PPSF	\$2,283	Fees	\$3,684	DOM	93



480 DEGRAW ST #3B

Gowanus

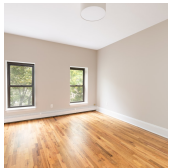
Type	Condo	Status	Contract	Ask	\$3,000,000
Sqft	1,613	Beds	4	Baths	2.5
PPSF	\$1,860	Fees	\$1,887	DOM	N/A

Compass is a licensed real estate broker and abides by Equal Housing Opportunity laws. All material presented herein is intended for informational purposes only. Information is compiled from sources deemed reliable but is subject to errors, omissions, changes in price, condition, sale, or withdrawal without notice. No statement is made as to the accuracy of any description. All measurements and square footages are approximate. This is not intended to solicit property already listed. Nothing herein shall be construed as legal, accounting or other professional advice outside the realm of real estate brokerage.

130 CARROLL ST # 2

Carroll Gardens

Type	Condo	Status	Contract	Ask	\$2,795,000
Sqft	1,662	Beds	3	Baths	3.5
PPSF	\$1,682	Fees	\$3,275	DOM	158



279 WYCKOFF ST

Boerum Hill

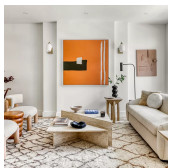
Type	Townhouse	Status	Contract	Ask	\$2,750,000
Sqft	3,200	Beds	4	Baths	4
PPSF	\$860	Fees	N/A	DOM	146



510 DRIGGS AVE # 2D

Williamsburg

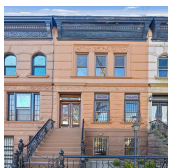
Type	Condo	Status	Contract	Ask	\$2,750,000
Sqft	1,711	Beds	3	Baths	2.5
PPSF	\$1,608	Fees	\$3,032	DOM	198



5 HAMPTON PL

Crown Heights

Type	Multihouse	Status	Contract	Ask	\$2,749,000
Sqft	3,396	Beds	4	Baths	4.5
PPSF	\$810	Fees	\$363	DOM	25



404 PK PL

Prospect Heights

Type	Townhouse	Status	Contract	Ask	\$2,700,000
Sqft	2,590	Beds	3	Baths	2.5
PPSF	\$1,043	Fees	\$686	DOM	22



174A 8 ST

Gowanus

Type	Townhouse	Status	Contract	Ask	\$2,700,000
Sqft	2,700	Beds	8	Baths	4
PPSF	\$1,000	Fees	\$517	DOM	203

Compass is a licensed real estate broker and abides by Equal Housing Opportunity laws. All material presented herein is intended for informational purposes only. Information is compiled from sources deemed reliable but is subject to errors, omissions, changes in price, condition, sale, or withdrawal without notice. No statement is made as to the accuracy of any description. All measurements and square footages are approximate. This is not intended to solicit property already listed. Nothing herein shall be construed as legal, accounting or other professional advice outside the realm of real estate brokerage.



265 STATE ST #1207

Type	Condo	Status	Contract
Sqft	1,765	Beds	3
PPSF	\$1,474	Fees	\$3,650

Boerum Hill

Ask	\$2,600,000
Baths	2.5
DOM	N/A

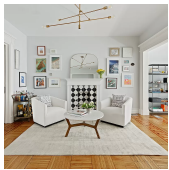


467 HICKS ST

Type	Townhouse	Status	Contract
Sqft	N/A	Beds	4
PPSF	N/A	Fees	N/A

Cobble Hill

Ask	\$2,600,000
Baths	2
DOM	112



415 4 ST #1

Type	Condo	Status	Contract
Sqft	1,808	Beds	2
PPSF	\$1,436	Fees	\$1,308

Park Slope

Ask	\$2,595,000
Baths	2
DOM	15

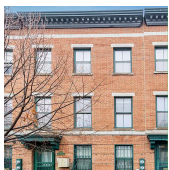


1 CITY POINT #63H

Type	Coop	Status	Contract
Sqft	1,189	Beds	2
PPSF	\$2,121	Fees	\$1,503

Downtown

Ask	\$2,521,545
Baths	2
DOM	1

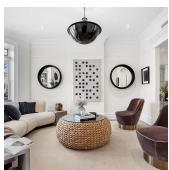


358 CUMBERLAND ST

Type	Townhouse	Status	Contract
Sqft	2,700	Beds	7
PPSF	\$889	Fees	\$813

Fort Greene

Ask	\$2,400,000
Baths	4
DOM	22



180 STERLING ST

Type	Townhouse	Status	Contract
Sqft	3,315	Beds	3
PPSF	\$709	Fees	\$555

Prospect Lefferts Gardens

Ask	\$2,350,000
Baths	4
DOM	34

Compass is a licensed real estate broker and abides by Equal Housing Opportunity laws. All material presented herein is intended for informational purposes only. Information is compiled from sources deemed reliable but is subject to errors, omissions, changes in price, condition, sale, or withdrawal without notice. No statement is made as to the accuracy of any description. All measurements and square footages are approximate. This is not intended to solicit property already listed. Nothing herein shall be construed as legal, accounting or other professional advice outside the realm of real estate brokerage.

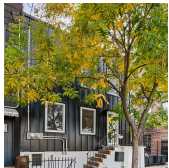


56 ECKFORD ST

Type	Townhouse	Status	Contract
Sqft	2,700	Beds	6
PPSF	\$871	Fees	\$372

Greenpoint

Ask	\$2,350,000
Baths	3
DOM	33

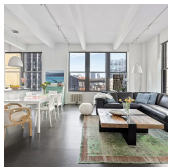


10 HUNTINGTON ST

Type	Townhouse	Status	Contract
Sqft	800	Beds	3
PPSF	\$2,875	Fees	\$319

Red Hook

Ask	\$2,300,000
Baths	3
DOM	27



70 WASHINGTON ST #50

Type	Condo	Status	Contract
Sqft	1,656	Beds	2
PPSF	\$1,359	Fees	\$2,768

Dumbo

Ask	\$2,250,000
Baths	3
DOM	30



2130 83 ST

Type	Townhouse	Status	Contract
Sqft	3,456	Beds	8
PPSF	\$644	Fees	\$988

Bensonhurst

Ask	\$2,225,000
Baths	6
DOM	10

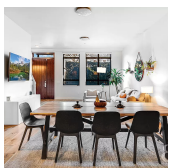


532 CLINTON AVE #2B

Type	Condo	Status	Contract
Sqft	1,601	Beds	3
PPSF	\$1,375	Fees	\$1,719

Clinton Hill

Ask	\$2,200,000
Baths	3
DOM	54



147 HOPE ST #TH1C

Type	Condo	Status	Contract
Sqft	2,075	Beds	2
PPSF	\$1,061	Fees	\$2,221

Williamsburg

Ask	\$2,200,000
Baths	2
DOM	25

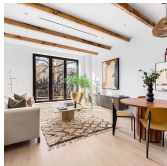
Compass is a licensed real estate broker and abides by Equal Housing Opportunity laws. All material presented herein is intended for informational purposes only. Information is compiled from sources deemed reliable but is subject to errors, omissions, changes in price, condition, sale, or withdrawal without notice. No statement is made as to the accuracy of any description. All measurements and square footages are approximate. This is not intended to solicit property already listed. Nothing herein shall be construed as legal, accounting or other professional advice outside the realm of real estate brokerage.



1 CITY POINT #57B

Downtown

Type	Condo	Status	Contract	Ask	\$2,198,940
Sqft	1,056	Beds	2	Baths	2
PPSF	\$2,083	Fees	\$1,316	DOM	N/A



38 BUTLER ST #2

Cobble Hill

Type	Condo	Status	Contract	Ask	\$2,195,000
Sqft	1,249	Beds	3	Baths	2
PPSF	\$1,758	Fees	\$737	DOM	26



2 NORTHSIDE PIERS #25N

Williamsburg

Type	Condo	Status	Contract	Ask	\$2,175,000
Sqft	1,396	Beds	2	Baths	2.5
PPSF	\$1,559	Fees	\$1,224	DOM	29



532 CLINTON AVE #2A

Clinton Hill

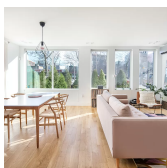
Type	Condo	Status	Contract	Ask	\$2,175,000
Sqft	1,536	Beds	3	Baths	3
PPSF	\$1,417	Fees	\$1,719	DOM	20



532 CLINTON AVE #6B

Clinton Hill

Type	Condo	Status	Contract	Ask	\$2,175,000
Sqft	1,528	Beds	3	Baths	3
PPSF	\$1,424	Fees	\$1,664	DOM	20



16 UNDERHILL AVE #1

Prospect Heights

Type	Condo	Status	Contract	Ask	\$2,125,000
Sqft	2,150	Beds	2	Baths	2.5
PPSF	\$989	Fees	\$2,195	DOM	64

Compass is a licensed real estate broker and abides by Equal Housing Opportunity laws. All material presented herein is intended for informational purposes only. Information is compiled from sources deemed reliable but is subject to errors, omissions, changes in price, condition, sale, or withdrawal without notice. No statement is made as to the accuracy of any description. All measurements and square footages are approximate. This is not intended to solicit property already listed. Nothing herein shall be construed as legal, accounting or other professional advice outside the realm of real estate brokerage.



123 SHERMAN ST

Type	Townhouse	Status	Contract
Sqft	1,900	Beds	4
PPSF	\$1,103	Fees	\$237

Windsor Terrace

Ask	\$2,095,000
Baths	2
DOM	17



532 CLINTON AVE #5A

Type	Condo	Status	Contract
Sqft	1,528	Beds	3
PPSF	\$1,342	Fees	\$1,620

Clinton Hill

Ask	\$2,050,000
Baths	3
DOM	20



19 JUDGE ST

Type	Multihouse	Status	Contract
Sqft	N/A	Beds	5
PPSF	N/A	Fees	\$190

Williamsburg

Ask	\$2,000,000
Baths	3
DOM	27

Compass is a licensed real estate broker and abides by Equal Housing Opportunity laws. All material presented herein is intended for informational purposes only. Information is compiled from sources deemed reliable but is subject to errors, omissions, changes in price, condition, sale, or withdrawal without notice. No statement is made as to the accuracy of any description. All measurements and square footages are approximate. This is not intended to solicit property already listed. Nothing herein shall be construed as legal, accounting or other professional advice outside the realm of real estate brokerage.