

JAN 18 - 24, 2021

The Brooklyn luxury real estate market, defined as all properties \$2M and above, saw 18 contracts signed this week, made up of 3 condos, and 15 houses. The previous week saw 25 deals.

\$3,047,806

Average Asking Price

\$2,500,000

Median Asking Price

\$1,040

Average PPSF

2%

Average Discount

\$54,860,500

Total Volume

211

Average Days On Market

6 Strong Place in Cobble Hill entered contract this week, with a last asking price of \$8,450,000. Built in 1900, this 24-foot-wide townhouse spans approximately 5,500 square feet across 4 floors, with 6 beds and 5 bathrooms. It features more than 12-foot ceilings, full-height parlor windows, a wood-burning fireplace, a dining room with custom bar, a rare 25-foot extension on three floors, multiple outdoor spaces, a kitchen with custom cabinetry and high-end appliances, and much more. The primary bedroom offers a walk-in closet with its own laundry, and a custom-designed bathroom with steam shower and soaking tub, as well as a terrace with outdoor living & dining areas.

Also signed this week was 371 Clinton Street in Carroll Gardens, with a last asking price of \$4,499,000. Built in 1899, this 4-story brownstone spans approximately 3,400 square feet with 4 beds and 3.5 baths. It has been completely renovated, bringing its original details back to life. It features a parlor floor with 14-foot ceilings, restored original woodwork & flooring, a wood-burning fireplace with original marble mantel, a kitchen with more 45 feet of Brazilian honed black slate countertops, and a garden with outdoor space & patio area. The master suite occupies the third floor and offers a walk-through dressing room and additional bedroom currently configured as a den.

3

Condo Deal(s)

0

Co-op Deal(s)

15

Townhouse Deal(s)

\$2,350,000

Average Asking Price

\$0

Average Asking Price

\$3,187,367

Average Asking Price

\$2,450,000

Median Asking Price

\$0

Median Asking Price

\$2,649,500

Median Asking Price

\$1,293

Average PPSF

N/A

Average PPSF

\$986

Average PPSF

1,842

Average SqFt

N/A

Average SqFt

3,353

Average SqFt

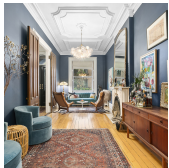


6 STRONG PL

Type	Townhouse	Status	Contract
SqFt	5,500	Beds	6
PPSF	\$1,536	Fees	\$2,174

Cobble Hill

Ask	\$8,450,000
Baths	5
DOM	53

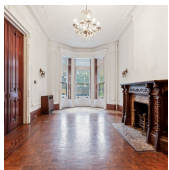


371 CLINTON ST

Type	Townhouse	Status	Contract
SqFt	3,400	Beds	4
PPSF	\$1,324	Fees	\$1,008

Carroll Gardens

Ask	\$4,499,000
Baths	3.5
DOM	163



18 8 AVE

Type	Townhouse	Status	Contract
SqFt	5,750	Beds	6
PPSF	\$696	Fees	\$1,346

Park Slope

Ask	\$3,998,000
Baths	5
DOM	82



329 WASHINGTON AVE

Type	Townhouse	Status	Contract
SqFt	3,500	Beds	4
PPSF	\$942	Fees	\$1,100

Clinton Hill

Ask	\$3,295,000
Baths	3
DOM	100

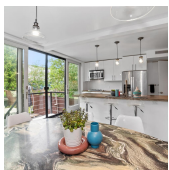


141 BERKELEY PL

Type	Townhouse	Status	Contract
SqFt	3,378	Beds	5
PPSF	\$874	Fees	\$972

Park Slope

Ask	\$2,950,000
Baths	4.5
DOM	107



734 DEAN ST

Type	Townhouse	Status	Contract
SqFt	2,140	Beds	4
PPSF	\$1,086	Fees	N/A

Prospect Heights

Ask	\$2,795,000
Baths	2
DOM	161

Compass is a licensed real estate broker and abides by Equal Housing Opportunity laws. All material presented herein is intended for informational purposes only. Information is compiled from sources deemed reliable but is subject to errors, omissions, changes in price, condition, sale, or withdrawal without notice. No statement is made as to the accuracy of any description. All measurements and square footages are approximate. This is not intended to solicit property already listed. Nothing herein shall be construed as legal, accounting or other professional advice outside the realm of real estate brokerage.



521 E 19 ST

Flatbush

Type	Townhouse	Status	Contract
Sqft	4,436	Beds	6
PPSF	\$609	Fees	\$895

Ask	\$2,699,000
Baths	3.5
DOM	785



434 VAN BRUNT ST

Red Hook

Type	Townhouse	Status	Contract
Sqft	4,082	Beds	4
PPSF	\$650	Fees	\$495

Ask	\$2,649,500
Baths	3
DOM	454



177 UNION ST #GARDEN

Carroll Gardens

Type	Condo	Status	Contract
Sqft	2,124	Beds	4
PPSF	\$1,178	Fees	\$150

Ask	\$2,500,000
Baths	3
DOM	129



652 DEAN ST

Prospect Heights

Type	Townhouse	Status	Contract
Sqft	2,520	Beds	8
PPSF	\$993	Fees	\$329

Ask	\$2,500,000
Baths	3
DOM	123

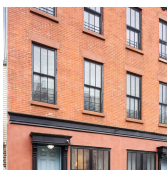


129 N 3 ST #TH3

Williamsburg

Type	Condo	Status	Contract
Sqft	1,943	Beds	3
PPSF	\$1,261	Fees	\$982

Ask	\$2,450,000
Baths	2
DOM	39



288 16 ST

Park Slope

Type	Townhouse	Status	Contract
Sqft	2,505	Beds	4
PPSF	\$956	Fees	\$641

Ask	\$2,395,000
Baths	2.5
DOM	51

Compass is a licensed real estate broker and abides by Equal Housing Opportunity laws. All material presented herein is intended for informational purposes only. Information is compiled from sources deemed reliable but is subject to errors, omissions, changes in price, condition, sale, or withdrawal without notice. No statement is made as to the accuracy of any description. All measurements and square footages are approximate. This is not intended to solicit property already listed. Nothing herein shall be construed as legal, accounting or other professional advice outside the realm of real estate brokerage.



14 MONROE ST

Bedford Stuyvesant

Type	Townhouse	Status	Contract
Sqft	2,520	Beds	4
PPSF	\$943	Fees	\$500

Ask	\$2,375,000
Baths	4.5
DOM	N/A



337 STUYVESANT AVE

Bedford Stuyvesant

Type	Townhouse	Status	Contract
Sqft	3,600	Beds	5
PPSF	\$656	Fees	\$496

Ask	\$2,360,000
Baths	3.5
DOM	498



179 MIDWOOD ST

Prospect Lefferts Gardens

Type	Townhouse	Status	Contract
Sqft	N/A	Beds	3
PPSF	N/A	Fees	\$782

Ask	\$2,350,000
Baths	2.5
DOM	66

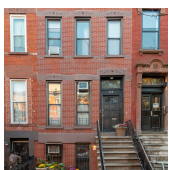


206 N 8 ST

Williamsburg

Type	Multihouse	Status	Contract
Sqft	1,600	Beds	4
PPSF	\$1,438	Fees	\$305

Ask	\$2,300,000
Baths	2.5
DOM	48

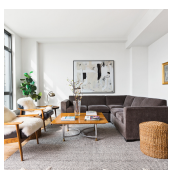


712 DEGRAW

Park Slope

Type	Townhouse	Status	Contract
Sqft	2,000	Beds	4
PPSF	\$1,098	Fees	\$408

Ask	\$2,195,000
Baths	2.5
DOM	70



147 HOPE ST #PH6C

Williamsburg

Type	Condo	Status	Contract
Sqft	1,458	Beds	3
PPSF	\$1,440	Fees	\$3,064

Ask	\$2,100,000
Baths	2
DOM	652

Compass is a licensed real estate broker and abides by Equal Housing Opportunity laws. All material presented herein is intended for informational purposes only. Information is compiled from sources deemed reliable but is subject to errors, omissions, changes in price, condition, sale, or withdrawal without notice. No statement is made as to the accuracy of any description. All measurements and square footages are approximate. This is not intended to solicit property already listed. Nothing herein shall be construed as legal, accounting or other professional advice outside the realm of real estate brokerage.