

NOVEMBER 2 - 8, 2020

The Brooklyn luxury real estate market, defined as all properties \$2M and above, saw 19 contracts signed this week, made up of 8 condos and 11 houses. The previous week saw 14 deals.

\$2,671,316	\$2,500,000	\$1,138
Average Asking Price	Median Asking Price	Average PPSF
6%	\$50,754,999	221
Average Discount	Total Volume	Average Days On Market

286 Lafayette Avenue in Clinton Hill entered contract this week, with a last asking price of \$3,995,000. This 4,108 square foot stone-clad Italianate townhome is 20 feet wide with 7 beds and 3.5 baths. Recently renovated, it continues to preserve its historic detail, but is balanced with rich, modern finishes and design. The parlor floor overlooks the rear deck and garden through a wall of steel-framed windows. The kitchen features Shinnoki panels, quartz countertops, and high-end appliances. Two floors up, the main bedroom covers the full width of the home and is outfitted with oversized windows and an ensuite bath.

Also signed this week was 119 Lincoln Place in Park Slope, with a last asking price of \$3,350,000. Built in 1896, this 4-story brownstone spans approximately 3,200 square feet with 4 beds and 3 baths. It features many original details, including fireplace mantles and intricate flooring, but is outfitted with modern conveniences, and is situated on a double lot with a backyard over 87 feet deep. It offers a chef's eat-in kitchen with high-end, commercial appliances, a formal dining room, double parlors, and much more spread across its functional layout and generous entertainment space.

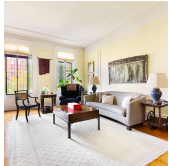
8	0	11
Condo Deal(s)	Co-op Deal(s)	Townhouse Deal(s)
\$2,579,250	\$0	\$2,738,273
Average Asking Price	Average Asking Price	Average Asking Price
\$2,575,000	\$0	\$2,500,000
Median Asking Price	Median Asking Price	Median Asking Price
\$1,393	N/A	\$934
Average PPSF	Average PPSF	Average PPSF
1,881	N/A	3,087
Average SqFt	Average SqFt	Average SqFt



286 LAFAYETTE AVE

Clinton Hill

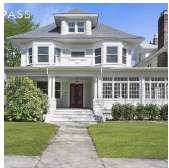
Type	Townhouse	Status	Contract	Ask	\$3,995,000
SqFt	4,108	Beds	7	Baths	3
PPSF	\$973	Fees	N/A	DOM	57



119 LINCOLN PL

Park Slope

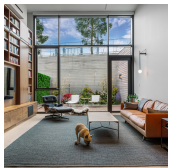
Type	Townhouse	Status	Contract	Ask	\$3,350,000
SqFt	3,200	Beds	4	Baths	3
PPSF	\$1,047	Fees	\$706	DOM	559



485 E 17 ST

Flatbush

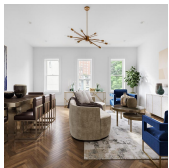
Type	Townhouse	Status	Contract	Ask	\$3,300,000
SqFt	3,459	Beds	6	Baths	3
PPSF	\$955	Fees	N/A	DOM	N/A



PIERHOUSE - 90 FURMAN ST #N101

Brooklyn Heights

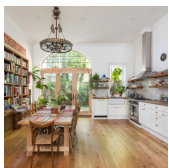
Type	Condo	Status	Contract	Ask	\$3,195,000
SqFt	1,978	Beds	2	Baths	2.5
PPSF	\$1,616	Fees	\$4,267	DOM	105



220 PK PL #4E

Prospect Heights

Type	Condo	Status	Contract	Ask	\$2,999,000
SqFt	1,918	Beds	3	Baths	2
PPSF	\$1,564	Fees	\$2,153	DOM	132

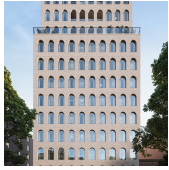


126 MESEROLE AVE

Greenpoint

Type	Townhouse	Status	Contract	Ask	\$2,950,000
SqFt	3,987	Beds	5	Baths	2.5
PPSF	\$740	Fees	\$493	DOM	94

Compass is a licensed real estate broker and abides by Equal Housing Opportunity laws. All material presented herein is intended for informational purposes only. Information is compiled from sources deemed reliable but is subject to errors, omissions, changes in price, condition, sale, or withdrawal without notice. No statement is made as to the accuracy of any description. All measurements and square footages are approximate. This is not intended to solicit property already listed. Nothing herein shall be construed as legal, accounting or other professional advice outside the realm of real estate brokerage.

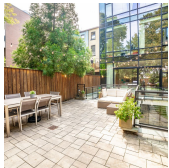


PARLOUR - 243 FOURTH AVE #2A

Type	Condo	Status	Contract
Sqft	1,912	Beds	4
PPSF	\$1,516	Fees	\$1,034

Park Slope

Ask	\$2,900,000
Baths	3.5
DOM	154

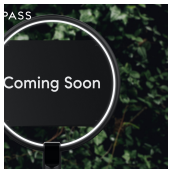


53 LINCOLN PL #1

Type	Condo	Status	Contract
Sqft	2,217	Beds	2
PPSF	\$1,263	Fees	\$662

Park Slope

Ask	\$2,799,999
Baths	2
DOM	37

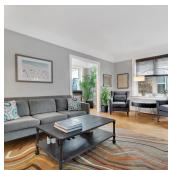


202 BERGEN ST

Type	Townhouse	Status	Contract
Sqft	1,848	Beds	3
PPSF	\$1,489	Fees	N/A

Boerum Hill

Ask	\$2,750,000
Baths	2
DOM	125

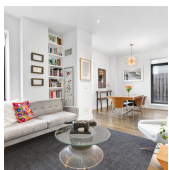


536 PROSPECT AVE

Type	Townhouse	Status	Contract
Sqft	N/A	Beds	N/A
PPSF	N/A	Fees	N/A

Windsor Terrace

Ask	\$2,500,000
Baths	N/A
DOM	241

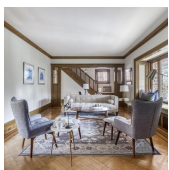


110 LIVINGSTON ST #8OP

Type	Condo	Status	Contract
Sqft	2,010	Beds	3
PPSF	\$1,170	Fees	\$2,734

Downtown

Ask	\$2,350,000
Baths	2.5
DOM	478



99 82 ST

Type	Townhouse	Status	Contract
Sqft	2,700	Beds	4
PPSF	\$851	Fees	\$1,124

Bay Ridge

Ask	\$2,297,000
Baths	2.5
DOM	107

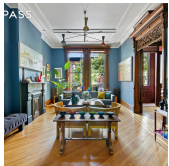
Compass is a licensed real estate broker and abides by Equal Housing Opportunity laws. All material presented herein is intended for informational purposes only. Information is compiled from sources deemed reliable but is subject to errors, omissions, changes in price, condition, sale, or withdrawal without notice. No statement is made as to the accuracy of any description. All measurements and square footages are approximate. This is not intended to solicit property already listed. Nothing herein shall be construed as legal, accounting or other professional advice outside the realm of real estate brokerage.



356 NEW YORK AVE

Crown Heights

Type	Townhouse	Status	Contract	Ask	\$2,295,000
Sqft	3,510	Beds	6	Baths	3
PPSF	\$654	Fees	N/A	DOM	222



437 MACDONOUGH ST

Bedford Stuyvesant

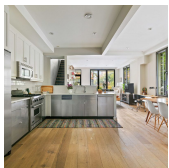
Type	Townhouse	Status	Contract	Ask	\$2,275,000
Sqft	2,466	Beds	4	Baths	3
PPSF	\$923	Fees	N/A	DOM	30



161 12 ST

Gowanus

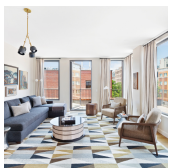
Type	Townhouse	Status	Contract	Ask	\$2,249,000
Sqft	2,060	Beds	4	Baths	2
PPSF	\$1,092	Fees	\$1,363	DOM	144



565 DEAN ST #1

Prospect Heights

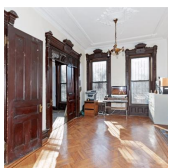
Type	Condo	Status	Contract	Ask	\$2,200,000
Sqft	2,200	Beds	3	Baths	3
PPSF	\$1,000	Fees	\$815	DOM	21



465 PACIFIC ST #4A

Boerum Hill

Type	Condo	Status	Contract	Ask	\$2,170,000
Sqft	1,546	Beds	3	Baths	2
PPSF	\$1,404	Fees	\$2,946	DOM	785



526 MONROE ST

Bedford Stuyvesant

Type	Townhouse	Status	Contract	Ask	\$2,160,000
Sqft	3,530	Beds	6	Baths	3
PPSF	\$612	Fees	N/A	DOM	14

Compass is a licensed real estate broker and abides by Equal Housing Opportunity laws. All material presented herein is intended for informational purposes only. Information is compiled from sources deemed reliable but is subject to errors, omissions, changes in price, condition, sale, or withdrawal without notice. No statement is made as to the accuracy of any description. All measurements and square footages are approximate. This is not intended to solicit property already listed. Nothing herein shall be construed as legal, accounting or other professional advice outside the realm of real estate brokerage.



11 HOYT ST #26K

Type Condo
Sqft 1,260
PPSF \$1,604

Status Contract
Beds 3
Fees \$2,563

Downtown

Ask \$2,020,000
Baths 2
DOM 672

Compass is a licensed real estate broker and abides by Equal Housing Opportunity laws. All material presented herein is intended for informational purposes only. Information is compiled from sources deemed reliable but is subject to errors, omissions, changes in price, condition, sale, or withdrawal without notice. No statement is made as to the accuracy of any description. All measurements and square footages are approximate. This is not intended to solicit property already listed. Nothing herein shall be construed as legal, accounting or other professional advice outside the realm of real estate brokerage.

© 2019 Compass. This report and information provided in this report are proprietary to Compass and may not be sold, used or reprinted, in whole or in part, without the prior written consent in each instance of Compass. Data is subject to revision. Sourced from Compass proprietary database. All rights reserved.

[compass.com](https://www.compass.com)