

AUGUST 17 - 23, 2020

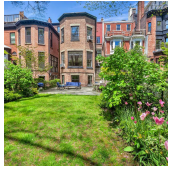
The Brooklyn luxury real estate market, defined as all properties listed at \$2M and above, saw 15 contract signed this week, made up of 7 condos, and 8 houses. The previous week saw 15 deals.

\$3,905,751	\$2,950,000	\$1,255
Average Asking Price	Median Asking Price	Average PPSF
2%	\$58,586,259	190
Average Discount	Total Volume	Average Days On Market

52 Remsent Street in Brooklyn Heights entered contract this week, with a last asking price of \$12,695,000. This townhouse spans 7,675 square feet, resides on a 25-foot lot, and has 8 bedrooms and 6 bathrooms. The unique design features side windows on the first three floors, offering significant natural light. The ceilings soar 11'4" high on the parlor level, which are further accented by arched doorways, barrel ceiling, and a center hall staircase. It boasts a 1,950 square foot cellar, and an outdoor space of approximately 3,050 square feet.

Also signed this week was 90 Furman Street #N1010, with a last asking price of \$7,150,000. Built in 2015, this condo spans 3,190 square feet with 4 beds and 3.5 baths. It features nearly 2,000 additional square feet of private, landscaped outdoor space across two levels, as well as 18-foot ceilings. Views from the outdoor space include the Manhattan Skyline, Brooklyn Bridge, and the Statue of Liberty. Up top is a massive roof deck, with multi-level seatings. The master suite has equally amazing views, as well as two custom rifted oak walk-in closets. The building offers two 24-hour attended lobbies, on-site valet parking, two fitness centers, and storage.

7	0	8
Condo Deal(s)	Co-op Deal(s)	Townhouse Deal(s)
\$3,011,609	\$0	\$4,688,125
Average Asking Price	Average Asking Price	Average Asking Price
\$2,380,000	\$0	\$3,712,500
Median Asking Price	Median Asking Price	Median Asking Price
\$1,510	N/A	\$1,037
Average PPSF	Average PPSF	Average PPSF
2,020	N/A	4,454
Average SqFt	Average SqFt	Average SqFt



52 REMSEN ST

Brooklyn Heights

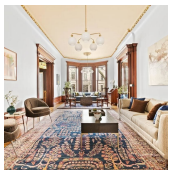
Type	Townhouse	Status	Contract	Ask	\$12,695,000
SqFt	7,675	Beds	8	Baths	6
PPSF	\$1,655	Taxes	\$3,175	Maint	N/A



90 FURMAN ST #N1010

Brooklyn Heights

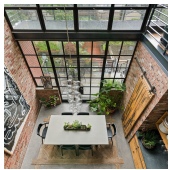
Type	Condo	Status	Contract	Ask	\$7,150,000
SqFt	3,190	Beds	4	Baths	3
PPSF	\$2,242	Taxes	\$4,223	Maint	\$3,797



559 1 ST

Park Slope

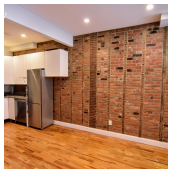
Type	Townhouse	Status	Contract	Ask	\$4,745,000
SqFt	5,045	Beds	6	Baths	3
PPSF	\$941	Taxes	\$1,061	Maint	N/A



141 1/2 NELSON ST

Ask \$3,995,000

Type	Townhouse	Status	Contract	Baths	4.5
SqFt	N/A	Beds	5	Maint	N/A
PPSF	N/A	Taxes	\$908		



267 POWERS ST

Williamsburg

Type	Townhouse	Status	Contract	Ask	\$3,925,000
SqFt	6,050	Beds	20	Baths	14
PPSF	\$649	Taxes	N/A	Maint	N/A



35 DEVOE ST

Williamsburg

Type	Townhouse	Status	Contract	Ask	\$3,500,000
SqFt	3,822	Beds	4	Baths	3
PPSF	\$916	Taxes	\$407	Maint	N/A

Compass is a licensed real estate broker and abides by Equal Housing Opportunity laws. All material presented herein is intended for informational purposes only. Information is compiled from sources deemed reliable but is subject to errors, omissions, changes in price, condition, sale, or withdrawal without notice. No statement is made as to the accuracy of any description. All measurements and square footages are approximate. This is not intended to solicit property already listed. Nothing herein shall be construed as legal, accounting or other professional advice outside the realm of real estate brokerage.



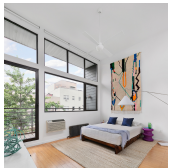
433 ST

Type Townhouse
Sqft 3,040
PPSF \$1,051

Status Contract
Beds 4
Taxes \$275

Gowanus

Ask \$3,195,000
Baths 2
Maint N/A

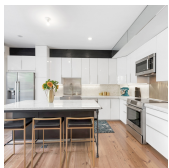


580 DRIGGS AVE

Type Townhouse
Sqft 2,325
PPSF \$1,269

Status Contract
Beds 4
Taxes \$391

Ask \$2,950,000
Baths 2.5
Maint N/A



443 BERGEN ST #1

Type Condo
Sqft 2,428
PPSF \$1,069

Status Contract
Beds 3
Taxes \$663

Park Slope

Ask \$2,595,000
Baths 2
Maint \$692



79 MONROE ST

Type Townhouse
Sqft 3,220
PPSF \$777

Status Contract
Beds 4
Taxes N/A

Bedford Stuyvesant

Ask \$2,499,999
Baths 3
Maint N/A



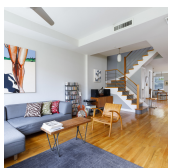
100 JAY ST #24A

Type Condo
Sqft 1,711
PPSF \$1,459

Status Contract
Beds 2
Taxes \$100

Dumbo

Ask \$2,495,000
Baths 2
Maint \$1,394



330 2 ST #1E

Type Condo
Sqft 1,678
PPSF \$1,419

Status Contract
Beds 3
Taxes \$1,576

Park Slope

Ask \$2,380,000
Baths 2.5
Maint \$717

Compass is a licensed real estate broker and abides by Equal Housing Opportunity laws. All material presented herein is intended for informational purposes only. Information is compiled from sources deemed reliable but is subject to errors, omissions, changes in price, condition, sale, or withdrawal without notice. No statement is made as to the accuracy of any description. All measurements and square footages are approximate. This is not intended to solicit property already listed. Nothing herein shall be construed as legal, accounting or other professional advice outside the realm of real estate brokerage.

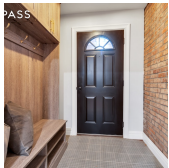


423 3 ST #3

Type	Condo	Status	Contract
Sqft	N/A	Beds	3
PPSF	N/A	Taxes	\$138

Park Slope

Ask	\$2,250,000
Baths	2
Maint	\$428



154 NELSON ST #GARDEN

Type	Condo	Status	Contract
Sqft	1,937	Beds	2
PPSF	\$1,110	Taxes	\$375

Carroll Gardens

Ask	\$2,149,000
Baths	2
Maint	\$408



ONE CITY POINT #29A

Type	Condop	Status	Contract
Sqft	1,174	Beds	2
PPSF	\$1,757	Taxes	N/A

Ask	\$2,062,260
Baths	2
Maint	\$1,444

Compass is a licensed real estate broker and abides by Equal Housing Opportunity laws. All material presented herein is intended for informational purposes only. Information is compiled from sources deemed reliable but is subject to errors, omissions, changes in price, condition, sale, or withdrawal without notice. No statement is made as to the accuracy of any description. All measurements and square footages are approximate. This is not intended to solicit property already listed. Nothing herein shall be construed as legal, accounting or other professional advice outside the realm of real estate brokerage.