

**JANUARY 6 - 12, 2020**

The Brooklyn luxury real estate market, defined as all homes \$2M and above, saw 10 contracts signed, made up of 4 condos and 6 homes.

**\$3,619,400**

Average Contract Price

**\$2,892,000**

Median Contract Price

**\$1,085**

Average PPSF

**1%**

Average Discount

**\$36,193,995**

Contract Volume

**175**

Average Days On Market

The highest-priced contract was for the townhouse at 166 Amity Street in Cobble Hill, at \$8,000,000. This 25-foot wide home offers three exposures and a south-facing yard featuring a disappearing heated pool and hot tub. At 4,500 square feet spread over 4 stories, it has 5 bedrooms and 3 full bathrooms. The garden level houses the kitchen, which is equipped with an antique Garland stove, a custom teak island, and a working fireplace. The master bedroom, located on the third floor, features a black marble fireplace, two northern exposures, and a large walk-in cedar closet. This home went into contract at its asking price after 59 days.

The second most expensive contract was for the penthouse at 210 Pacific Street in Boerum Hill, at \$5,995,000. This full-floor condo is incomparable in its level of design and detail. With amazing views of the Manhattan skyline and Statue of Liberty, as well as a custom kitchen with enormous island and top-of-the-line equipment, this 2,777 square foot penthouse is the ultimate expression of classic elegance and modern luxury. The master bedroom features its own private terrace and marble-clad bath with soaking tub. This home went into contract at its asking price after 167 days.

**4**

Condo Deal(s)

**0**

Co-op Deal(s)

**6**

Townhouse Deal(s)

**\$3,152,500**

Average Contract Price

**\$0**

Average Contract Price

**\$3,930,666**

Average Contract Price

**\$2,232,500**

Median Contract Price

**\$0**

Median Contract Price

**\$2,997,498**

Median Contract Price

**\$1,610**

Average PPSF

**N/A**

Average PPSF

**\$735**

Average PPSF

**1,865**

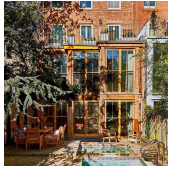
Average SqFt

**N/A**

Average SqFt

**2,580**

Average SqFt



### 166 AMITY ST

Cobble Hill

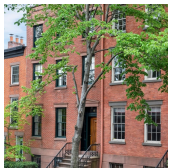
Type	Townhouse	Status	Contract	Price	\$8,000,000
SqFt	4,500	Beds	5	Baths	3
PPSF	\$1,778	Taxes	\$525	Maint	N/A



### 210 PACIFIC ST #PH

Boerum Hill

Type	Condo	Status	Contract	Price	\$5,995,000
SqFt	2,777	Beds	5	Baths	3
PPSF	\$2,159	Taxes	\$181	Maint	\$2,073



### 14 WILLOW PL

Brooklyn Heights

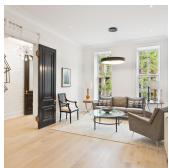
Type	Townhouse	Status	Contract	Price	\$4,700,000
SqFt	4,000	Beds	5	Baths	4
PPSF	\$1,175	Taxes	\$2,809	Maint	N/A



### 143 BOND ST

Boerum Hill

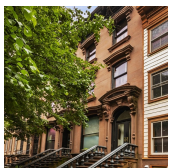
Type	Townhouse	Status	Contract	Price	\$2,999,995
SqFt	N/A	Beds	3	Baths	3
PPSF	N/A	Taxes	\$695	Maint	N/A



### 283 JEFFERSON AVE

Bedford Stuyvesant

Type	Townhouse	Status	Contract	Price	\$2,995,000
SqFt	3,600	Beds	5	Baths	4
PPSF	\$832	Taxes	\$517	Maint	N/A



### 130 ST JAMES PL

Clinton Hill

Type	Townhouse	Status	Contract	Price	\$2,789,000
SqFt	N/A	Beds	5	Baths	3
PPSF	N/A	Taxes	\$406	Maint	N/A

Compass is a licensed real estate broker and abides by Equal Housing Opportunity laws. All material presented herein is intended for informational purposes only. Information is compiled from sources deemed reliable but is subject to errors, omissions, changes in price, condition, sale, or withdrawal without notice. No statement is made as to the accuracy of any description. All measurements and square footages are approximate. This is not intended to solicit property already listed. Nothing herein shall be construed as legal, accounting or other professional advice outside the realm of real estate brokerage.



## 404 11 ST #2

**Type** Condo  
**Sqft** 1,787  
**PPSF** \$1,285

**Status** Contract  
**Beds** 3  
**Taxes** \$108

### Park Slope

**Price** \$2,295,000  
**Baths** 2  
**Maint** \$466



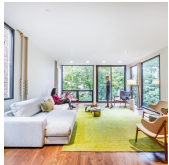
## 910 UNION ST #5B

**Type** Condo  
**Sqft** 1,535  
**PPSF** \$1,414

**Status** Contract  
**Beds** 3  
**Taxes** \$275

### Park Slope

**Price** \$2,170,000  
**Baths** 2.5  
**Maint** \$1,261



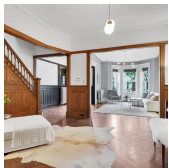
## 51 LINCOLN PL #3

**Type** Condo  
**Sqft** 1,360  
**PPSF** \$1,581

**Status** Contract  
**Beds** 3  
**Taxes** \$1,309

### Park Slope

**Price** \$2,150,000  
**Baths** 2  
**Maint** \$477



## 163 MAPLE ST

**Type** Townhouse  
**Sqft** 3,380  
**PPSF** \$622

**Status** Contract  
**Beds** 4  
**Taxes** \$785

### Prospect Lefferts Gardens

**Price** \$2,100,000  
**Baths** 3.5  
**Maint** N/A

Compass is a licensed real estate broker and abides by Equal Housing Opportunity laws. All material presented herein is intended for informational purposes only. Information is compiled from sources deemed reliable but is subject to errors, omissions, changes in price, condition, sale, or withdrawal without notice. No statement is made as to the accuracy of any description. All measurements and square footages are approximate. This is not intended to solicit property already listed. Nothing herein shall be construed as legal, accounting or other professional advice outside the realm of real estate brokerage.