



COMPASS

September 2021

Warren Market Insights



Cherie Berger

Sales Associate

908.410.0931

cherie.berger@compass.com

Market Profile & Trends Overview

The table belows shows data & statistics for September 2021 (CM), and the percentage difference of these metrics compared to data from last month (LM), the last three months (L3M), the same month last year (PYM), the entire last year (LY), prior year (PY), year-to-date (YTD), and the prior year-to-date (PYTD).

		CM	LM	L3M	PYM	LY	PY	YTD	PYTD
Inventory	# OF PROPERTIES	52	-12%	-17%	-43%	-36%	-54%	-	-
	MEDIAN PRICE	\$1,070,668	2%	10%	19%	19%	19%	-	-
	AVERAGE PRICE	\$1,214,670	-1%	6%	15%	23%	24%	-	-
	PRICE PER SQFT	\$311	10%	8%	22%	24%	28%	-	-
	MONTHS OF SUPPLY	2.7	-3%	26%	-55%	-50%	-69%	-	-
New Listings	# OF PROPERTIES	21	-16%	-35%	-42%	-25%	-28%	279	-4.8%
	MEDIAN PRICE	\$860,000	1%	-2%	2%	5%	2%	\$865,000	1.8%
	AVERAGE PRICE	\$908,952	-7%	-8%	-20%	-1%	3%	\$962,510	4.9%
	PRICE PER SQFT	\$268	-3%	-4%	2%	5%	11%	\$275	14.6%
Sales	# OF PROPERTIES	19	-10%	-37%	27%	11%	21%	201	48.9%
	MEDIAN PRICE	\$1,107,000	40%	29%	40%	50%	37%	\$851,000	3.2%
	AVERAGE PRICE	\$1,003,114	16%	8%	16%	26%	21%	\$912,972	10.5%
	PRICE PER SQFT	\$293	6%	6%	19%	24%	25%	\$262	9.6%
	SALE-TO-LIST RATIO	99.6%	-3.3%	-2%	2.7%	3.1%	3.5%	99.7%	4.0%



Cherie Berger

Sales Associate

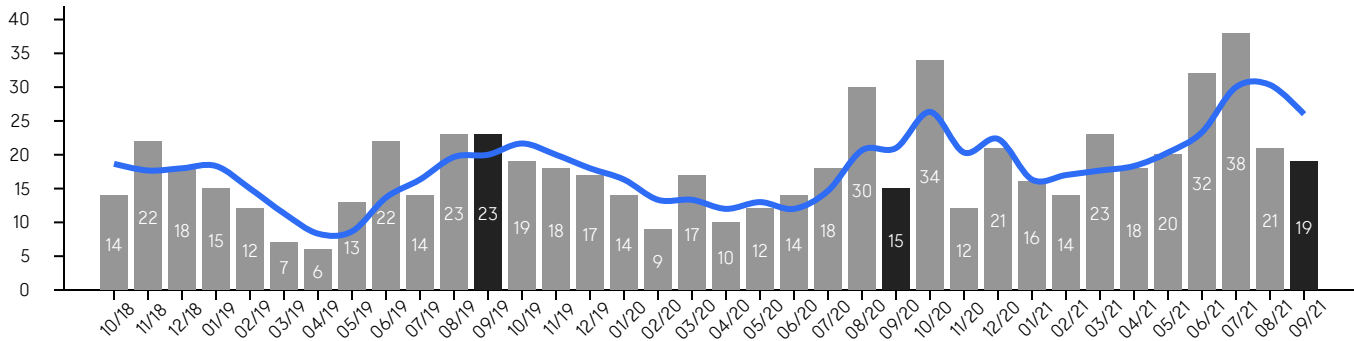
908.410.0931

cherie.berger@compass.com

Property Sales

There were 19 sales in September 2021, a change of 27% from 15 in September 2020 and -10% from the 21 sales last month. Compared to September 2019 and 2020, sales were mid level. There have been 201 year-to-date (YTD) sales, which is 48.9% higher than last year's year-to-date sales of 135.

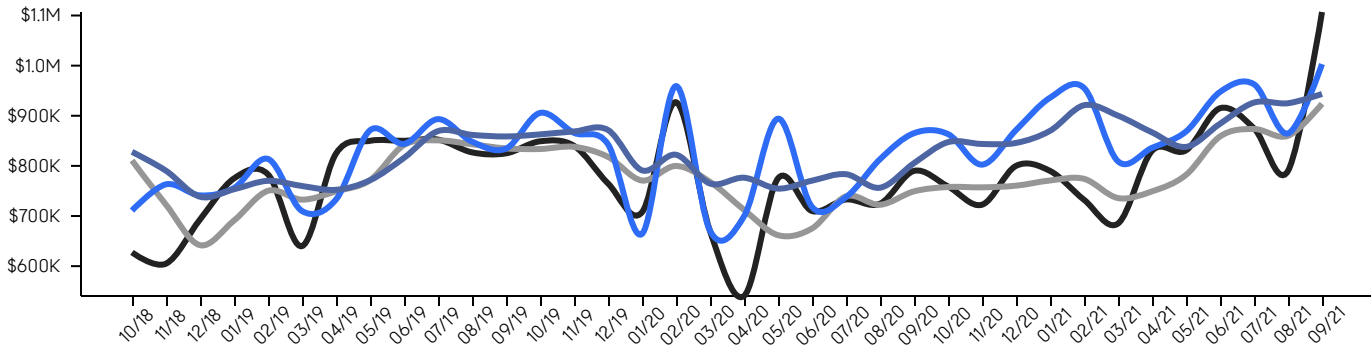
3-Month Average



Property Prices

The median sales price in September 2021 was \$1,107,000, a change of 40% from \$790,000 in September 2020, and a change of 40% from \$790,000 last month. The average sales price in September 2021 was \$1,003,114, a change of 16% from in September 2020, and a change of 16% from last month, and was at its highest level compared to 2020 and 2019.

Median Median (3-Month) Average Average (3-Month)



© 2021. Based on information from Garden State MLS, LLC for the period of January 2018 through September 2021. Due to MLS reporting methods and allowable reporting policy, this data is only informational and may not be completely accurate. Data maintained by the MLS may not reflect all real estate activity in the market.

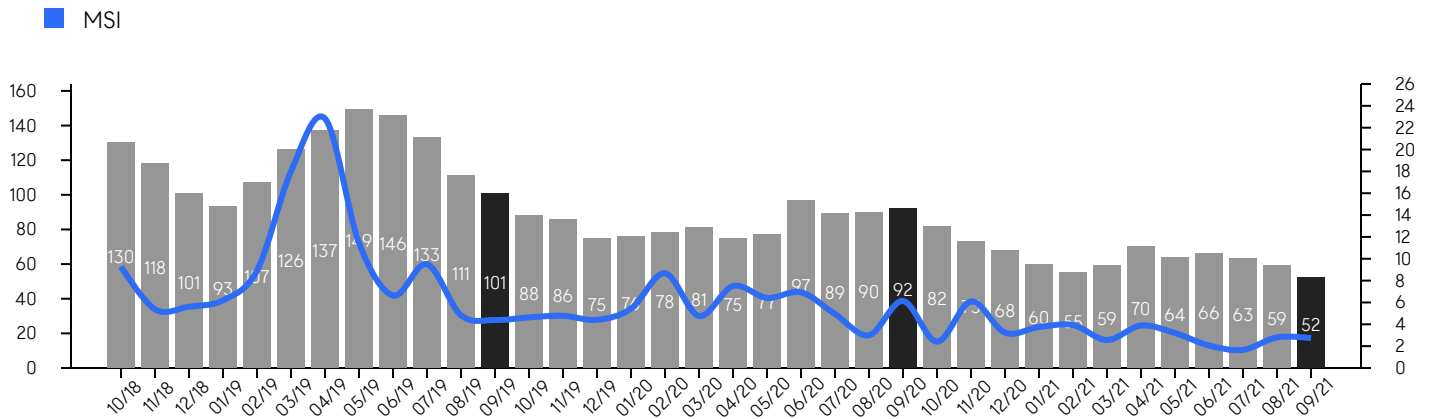


Cherie Berger
Sales Associate

908.410.0931
cherie.berger@compass.com

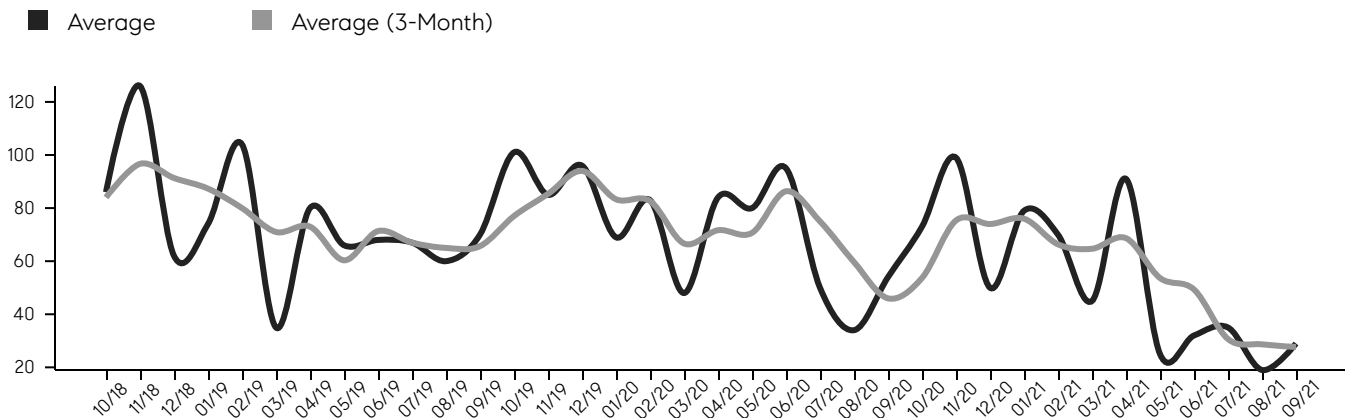
Inventory & MSI

The total inventory of properties available for sale as of September 2021 was 52, a difference of -12% from last month, and -43% from 92 in September 2020, and was at its lowest level compared to 2020 and 2019. The months of supply inventory (MSI) was at 2.7 months, compared to 2020 and 2019. A comparatively lower MSI benefits sellers, while a higher MSI benefits buyers.



Market Time

The average days on market (DOM) shows the number of days the average property is on the market before selling. An upward trend tends to indicate a move towards a buyer's market, while a downward trend tends to indicate a move to a seller's market. The DOM for September 2021 was 29, a change of 53% from 19 days last month, and -46% from 54 days in September 2020, and was at its lowest level compared to 2020 and 2019.



© 2021. Based on information from Garden State MLS, LLC for the period of January 2018 through September 2021. Due to MLS reporting methods and allowable reporting policy, this data is only informational and may not be completely accurate. Data maintained by the MLS may not reflect all real estate activity in the market.

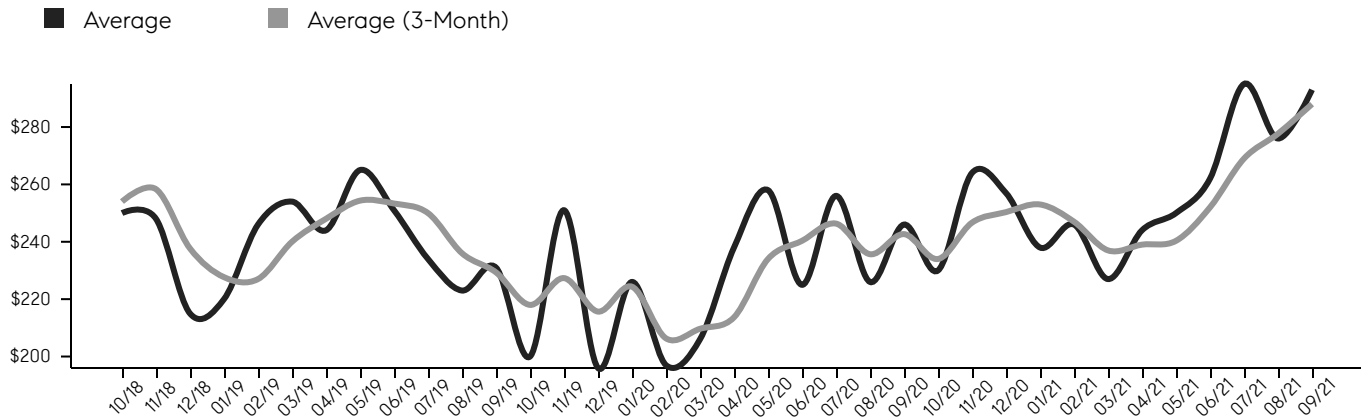


Cherie Berger
Sales Associate

908.410.0931
cherie.berger@compass.com

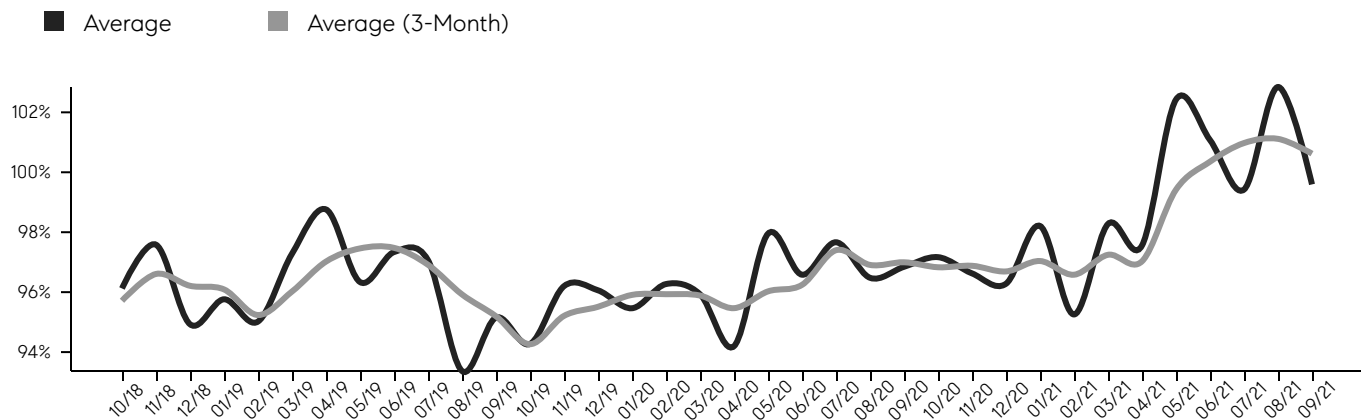
Selling Price Per Square Foot

The selling price per square foot (PPSF) is a great indicator for the direction of property values. Since median & average sales prices can be impacted by the "mix" of high or low end properties in the market, the selling price per square foot is a more normalized indicator on the direction of property values.



Selling Price vs. Listing Price

The selling price vs. listing price reveals the average amount that sellers are agreeing to come down from their list price. The lower the ratio is below 100%, the more of a buyer's market exists, while a ratio at or above 100% indicates more of a seller's market. The September 2021 selling price vs. listing price ratio was 99.6%, compared to 102.8% last month, and 96.8% in September 2020.



© 2021. Based on information from Garden State MLS, LLC for the period of January 2018 through September 2021. Due to MLS reporting methods and allowable reporting policy, this data is only informational and may not be completely accurate. Data maintained by the MLS may not reflect all real estate activity in the market.

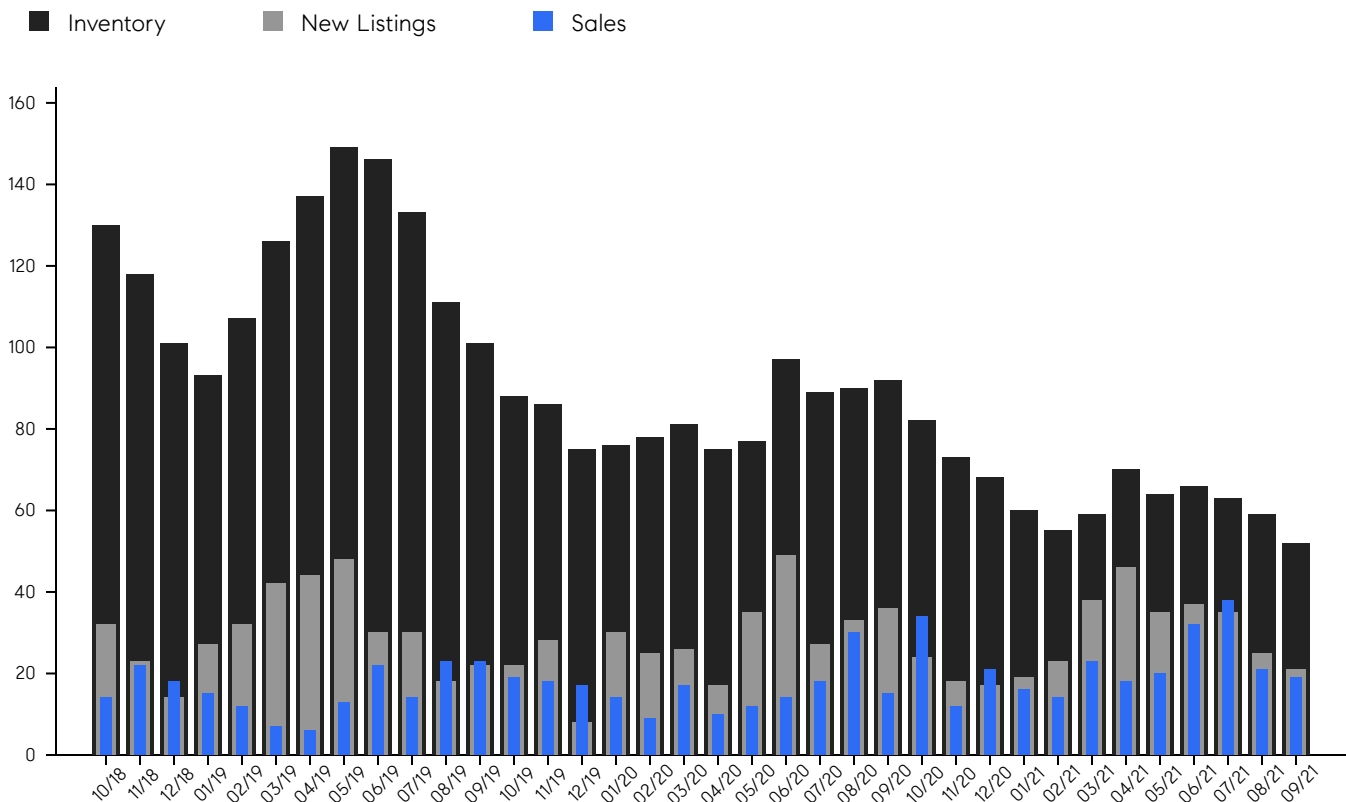


Cherie Berger
Sales Associate

908.410.0931
cherie.berger@compass.com

Inventory, New Listings & Sales

This last view of the market combines monthly inventory of properties for sale along with new listings and sales. The graph shows the basic annual seasonality of the market, as well as the relationship between these items. The number of new listings in September 2021 was 21, a change of -16% from 25 last month and -42% from 36 in September 2020.



© 2021. Based on information from Garden State MLS, LLC for the period of January 2018 through September 2021. Due to MLS reporting methods and allowable reporting policy, this data is only informational and may not be completely accurate. Data maintained by the MLS may not reflect all real estate activity in the market.



Cherie Berger

Sales Associate

908.410.0931

cherie.berger@compass.com

MONTH	# OF SALES	3-MO AVG	MEDIAN SALE PRICE	3-MO AVG	AVERAGE SALE PRICE	3-MO AVG	DAYS ON MARKET	3-MO AVG	AVERAGE PPSF	3-MO AVG	SALE /LIST	3-MO AVG	INV	NEW LISTINGS	MSI
Aug '21	21	30	\$790K	\$860K	\$865K	\$925K	19	29	\$276	\$278	102.8%	101.1%	59	25	2.8
Jul '21	38	30	\$875K	\$874K	\$963K	\$926K	35	31	\$295	\$269	99.4%	101.0%	63	35	1.7
Jun '21	32	23	\$915K	\$859K	\$947K	\$884K	32	49	\$262	\$252	101.1%	100.4%	66	37	2.1
May '21	20	20	\$831K	\$782K	\$869K	\$838K	25	54	\$250	\$240	102.4%	99.4%	64	35	3.2
Apr '21	18	18	\$830K	\$749K	\$836K	\$867K	91	69	\$244	\$239	97.6%	97.0%	70	46	3.9
Mar '21	23	18	\$685K	\$736K	\$809K	\$900K	45	65	\$227	\$237	98.3%	97.2%	59	38	2.6
Feb '21	14	17	\$733K	\$774K	\$956K	\$921K	70	66	\$246	\$247	95.3%	96.6%	55	23	3.9
Jan '21	16	16	\$790K	\$771K	\$936K	\$870K	79	76	\$238	\$253	98.2%	97.0%	60	19	3.8
Dec '20	21	22	\$800K	\$761K	\$871K	\$846K	50	74	\$257	\$250	96.3%	96.7%	68	17	3.2
Nov '20	12	20	\$723K	\$757K	\$803K	\$844K	99	75	\$264	\$247	96.6%	96.9%	73	18	6.1
Oct '20	34	26	\$759K	\$758K	\$863K	\$847K	73	54	\$230	\$234	97.2%	96.8%	82	24	2.4
Sep '20	15	21	\$790K	\$749K	\$865K	\$805K	54	46	\$246	\$243	96.8%	97.0%	92	36	6.1
Aug '20	30	21	\$725K	\$723K	\$813K	\$756K	34	60	\$226	\$236	96.5%	96.9%	90	33	3.0
Jul '20	18	15	\$733K	\$739K	\$738K	\$783K	50	75	\$256	\$246	97.7%	97.4%	89	27	4.9
Jun '20	14	12	\$710K	\$675K	\$718K	\$771K	95	86	\$225	\$240	96.6%	96.2%	97	49	6.9
May '20	12	13	\$775K	\$662K	\$894K	\$755K	80	71	\$258	\$234	97.9%	96.0%	77	35	6.4
Apr '20	10	12	\$540K	\$712K	\$699K	\$776K	84	72	\$238	\$214	94.2%	95.5%	75	17	7.5
Mar '20	17	13	\$670K	\$768K	\$671K	\$765K	48	67	\$206	\$210	95.9%	95.9%	81	26	4.8
Feb '20	9	13	\$927K	\$800K	\$959K	\$822K	83	83	\$197	\$206	96.3%	95.9%	78	25	8.7
Jan '20	14	16	\$708K	\$771K	\$664K	\$791K	69	83	\$226	\$224	95.5%	95.9%	76	30	5.4
Dec '19	17	18	\$765K	\$818K	\$843K	\$872K	96	94	\$196	\$216	96.1%	95.5%	75	8	4.4
Nov '19	18	20	\$840K	\$838K	\$866K	\$869K	85	85	\$251	\$227	96.2%	95.2%	86	28	4.8
Oct '19	19	22	\$849K	\$834K	\$906K	\$863K	101	77	\$200	\$218	94.3%	94.3%	88	22	4.6
Sep '19	23	20	\$825K	\$835K	\$834K	\$859K	70	66	\$231	\$229	95.2%	95.2%	101	22	4.4
Aug '19	23	20	\$827K	\$843K	\$848K	\$862K	60	65	\$223	\$236	93.4%	95.9%	111	18	4.8
Jul '19	14	16	\$853K	\$851K	\$893K	\$869K	67	67	\$234	\$250	97.1%	96.9%	133	30	9.5
Jun '19	22	14	\$850K	\$842K	\$844K	\$816K	68	71	\$251	\$253	97.3%	97.5%	146	30	6.6
May '19	13	9	\$850K	\$772K	\$871K	\$771K	66	60	\$265	\$254	96.3%	97.5%	149	48	11.5
Apr '19	6	8	\$825K	\$749K	\$733K	\$752K	80	73	\$244	\$248	98.8%	97.0%	137	44	22.8
Mar '19	7	11	\$640K	\$733K	\$710K	\$760K	35	71	\$254	\$240	97.3%	96.0%	126	42	18.0
Feb '19	12	15	\$783K	\$750K	\$814K	\$770K	104	80	\$246	\$227	95.0%	95.2%	107	32	8.9
Jan '19	15	18	\$775K	\$691K	\$756K	\$753K	74	87	\$220	\$228	95.8%	96.1%	93	27	6.2
Dec '18	18	18	\$693K	\$642K	\$741K	\$738K	62	91	\$215	\$238	94.9%	96.2%	101	14	5.6
Nov '18	22	18	\$605K	\$723K	\$763K	\$790K	126	97	\$248	\$258	97.6%	96.6%	118	23	5.4
Oct '18	14	19	\$628K	\$811K	\$711K	\$828K	86	84	\$250	\$254	96.1%	95.7%	130	32	9.3
Sep '18	17	20	\$935K	\$909K	\$897K	\$899K	78	76	\$277	\$255	96.1%	95.9%	145	39	8.5

© 2021. Based on information from Garden State MLS, LLC for the period of January 2018 through September 2021. Due to MLS reporting methods and allowable reporting policy, this data is only informational and may not be completely accurate. Data maintained by the MLS may not reflect all real estate activity in the market.



COMPASS

Compass makes no representations or warranties, express or implied, with respect to future market conditions or prices of residential product at the time the subject property or any competitive property is complete and ready for occupancy or with respect to any report, study, finding, recommendation or other information provided by Compass herein. Moreover, no warranty, express or implied, is made or should be assumed regarding the accuracy, adequacy, completeness, legality, reliability, merchantability or fitness for a particular purpose of any information, in part or whole, contained herein. All material is presented with the understanding that Compass shall not be deemed to provide legal, accounting or other professional services. This is not intended to solicit the purchase or sale of any property. Any and all such warranties are hereby expressly disclaimed. Equal Housing Opportunity.

© Compass. All Rights Reserved. This information may not be copied, used or distributed without Compass' consent.