



COMPASS

Queens Luxury Report

May 04 - 10, 2026, Residential Contracts \$1.25M+

Photo: [22-18 Jackson Avenue, Unit 719](#)

The Queens luxury real estate market, defined as all properties priced \$1.25M and above, saw 19 contracts signed this week, made up of 3 condos, 1 co-op, and 15 houses. The previous week saw 18 deals. For more information or data, please reach out to a Compass agent.

\$1,566,889

Average Asking Price

\$1,495,000

Median Asking Price

\$970

Average PPSF

2%

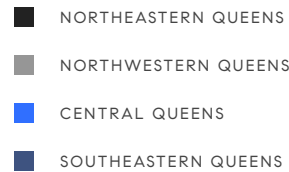
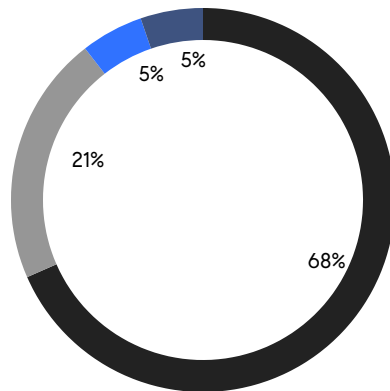
Average Discount

\$29,770,885

Total Volume

58

Average Days On Market



3

Condo Deal(s)

1

Co-op Deal(s)

15

Single-Family Deal(s)

\$1,617,667

Average Asking Price

\$1,425,000

Average Asking Price

\$1,566,193

Average Asking Price

\$1,650,000

Median Asking Price

\$1,425,000

Median Asking Price

\$1,495,000

Median Asking Price

\$1,943

Average PPSF

\$780

Average PPSF

833

Average SqFt

2,234

Average SqFt

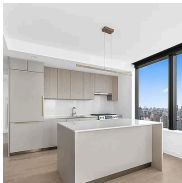


29-57 214th Place

Bayside

Contract Signed

Type	House	Price	\$2,099,998	Sq. Ft.	2,972	Beds	5
DOM	13	Initial	\$2,099,998	PPSF	\$707	Baths	3

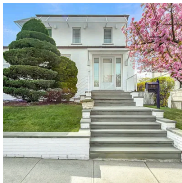


3 Court Square, Unit 4702

Long Island City

Contract Signed

Type	Condo	Price	\$1,925,000	Sq. Ft.	985	Beds	2
DOM	31	Initial	\$1,925,000	PPSF	\$1,955	Baths	2



28-24 214th Street

Bayside

Contract Signed

Type	House	Price	\$1,888,888	Sq. Ft.	2,956	Beds	3
DOM	15	Initial	\$1,888,888	PPSF	\$640	Baths	2.5



30-17 36th Street

Astoria

Contract Signed

Type	House	Price	\$1,875,000	Sq. Ft.	1,800	Beds	3
DOM	82	Initial	\$1,999,999	PPSF	\$1,042	Baths	1

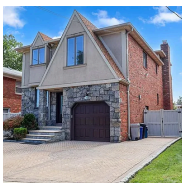


201-04 24th Road

Clearview

Contract Signed

Type	House	Price	\$1,700,000	Sq. Ft.	1,900	Beds	3
DOM	17	Initial	\$1,700,000	PPSF	\$895	Baths	2



210-30 29th Avenue

Bayside

Contract Signed

Type	House	Price	\$1,695,000	Sq. Ft.	3,500	Beds	5
DOM	239	Initial	\$2,000,000	PPSF	\$485	Baths	3.5

Compass is a licensed real estate broker and abides by Equal Housing Opportunity laws. All material presented herein is intended for informational purposes only. Information is compiled from sources deemed reliable but is subject to errors, omissions, changes in price, condition, sale, or withdrawal without notice. No statement is made as to the accuracy of any description. All measurements and square footages are approximate. This is not intended to solicit property already listed. Nothing herein shall be construed as legal, accounting or other professional advice outside the realm of real estate brokerage.

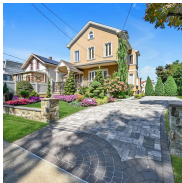


25-08 43rd Avenue, Unit PH1C

Long Island City

Contract Signed

Type	Condo	Price	\$1,650,000	Sq. Ft.	853	Beds	2
DOM	24	Initial	\$1,650,000	PPSF	\$1,935	Baths	2



149-15 11th Avenue

Whitestone

Contract Signed

Type	House	Price	\$1,599,000	Sq. Ft.	1,849	Beds	4
DOM	228	Initial	\$1,749,000	PPSF	\$865	Baths	4

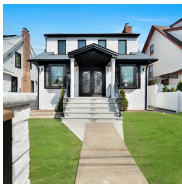


8-06 Clintonville St

Whitestone

Contract Signed

Type	House	Price	\$1,499,999	Sq. Ft.	4,160	Beds	4
DOM	116	Initial	\$1,698,888	PPSF	\$361	Baths	1.5

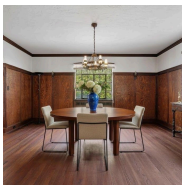


85-25 151st Street

Briarwood

Contract Signed

Type	House	Price	\$1,495,000	Sq. Ft.	1,561	Beds	7
DOM	34	Initial	\$1,495,000	PPSF	\$958	Baths	3

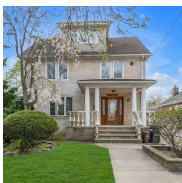


176-15 Croydon Road

Jamaica Estates

Contract Signed

Type	House	Price	\$1,450,000	Sq. Ft.	2,428	Beds	5
DOM	-	Initial	-	PPSF	\$598	Baths	3



208-14 50th Avenue

Bayside

Contract Signed

Type	House	Price	\$1,450,000	Sq. Ft.	2,405	Beds	4
DOM	16	Initial	\$1,450,000	PPSF	\$603	Baths	3

Compass is a licensed real estate broker and abides by Equal Housing Opportunity laws. All material presented herein is intended for informational purposes only. Information is compiled from sources deemed reliable but is subject to errors, omissions, changes in price, condition, sale, or withdrawal without notice. No statement is made as to the accuracy of any description. All measurements and square footages are approximate. This is not intended to solicit property already listed. Nothing herein shall be construed as legal, accounting or other professional advice outside the realm of real estate brokerage.



269 Grand Central Parkway, Unit 30V

Contract Signed

Glen Oaks

Type	Coop	Price	\$1,425,000	Sq. Ft.	1,972	Beds	3
DOM	22	Initial	\$1,425,000	PPSF	\$723	Baths	2



45-39 171st Place

Contract Signed

Flushing

Type	House	Price	\$1,398,000	Sq. Ft.	-	Beds	5
DOM	22	Initial	\$1,438,000	PPSF	-	Baths	4



32-02 Murray Lane

Contract Signed

Flushing

Type	House	Price	\$1,398,000	Sq. Ft.	1,400	Beds	3
DOM	18	Initial	\$1,398,000	PPSF	\$999	Baths	2

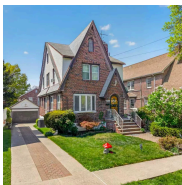


64-04 Utopia Parkway

Contract Signed

Fresh Meadows

Type	House	Price	\$1,358,000	Sq. Ft.	1,680	Beds	3
DOM	92	Initial	\$1,358,000	PPSF	\$809	Baths	2.5



29-46 169th Street

Contract Signed

Flushing

Type	House	Price	\$1,298,000	Sq. Ft.	1,360	Beds	3
DOM	6	Initial	\$1,298,000	PPSF	\$955	Baths	2



7-03 147th Street

Contract Signed

Whitestone

Type	House	Price	\$1,288,000	Sq. Ft.	1,300	Beds	3
DOM	42	Initial	\$1,398,000	PPSF	\$991	Baths	3

Compass is a licensed real estate broker and abides by Equal Housing Opportunity laws. All material presented herein is intended for informational purposes only. Information is compiled from sources deemed reliable but is subject to errors, omissions, changes in price, condition, sale, or withdrawal without notice. No statement is made as to the accuracy of any description. All measurements and square footages are approximate. This is not intended to solicit property already listed. Nothing herein shall be construed as legal, accounting or other professional advice outside the realm of real estate brokerage.



25-08 43rd Avenue, Unit PH1D

Long Island City

Contract Signed

Type	Condo	Price	\$1,278,000	Sq. Ft.	660	Beds	1
DOM	23	Initial	\$1,278,000	PPSF	\$1,937	Baths	1

Compass is a licensed real estate broker and abides by Equal Housing Opportunity laws. All material presented herein is intended for informational purposes only. Information is compiled from sources deemed reliable but is subject to errors, omissions, changes in price, condition, sale, or withdrawal without notice. No statement is made as to the accuracy of any description. All measurements and square footages are approximate. This is not intended to solicit property already listed. Nothing herein shall be construed as legal, accounting or other professional advice outside the realm of real estate brokerage.

© 2026 Compass. This report and information provided in this report are proprietary to Compass and may not be sold, used or reprinted, in whole or part, without the prior written consent in each instance of Compass. Data is subject to revision. Sourced from Compass proprietary database. All rights reserved.

compass.com