



COMPASS

Queens Luxury Report

Apr 20 - 26, 2026, Residential Contracts \$1.25M+

Photo: [11-02 49th Avenue, Unit 4H](#)

The Queens luxury real estate market, defined as all properties priced \$1.25M and above, saw 16 contracts signed this week, made up of 4 condos, and 12 houses. The previous week saw 22 deals. For more information or data, please reach out to a Compass agent.

\$1,873,480

Average Asking Price

2%

Average Discount

\$1,939,000

Median Asking Price

\$29,975,668

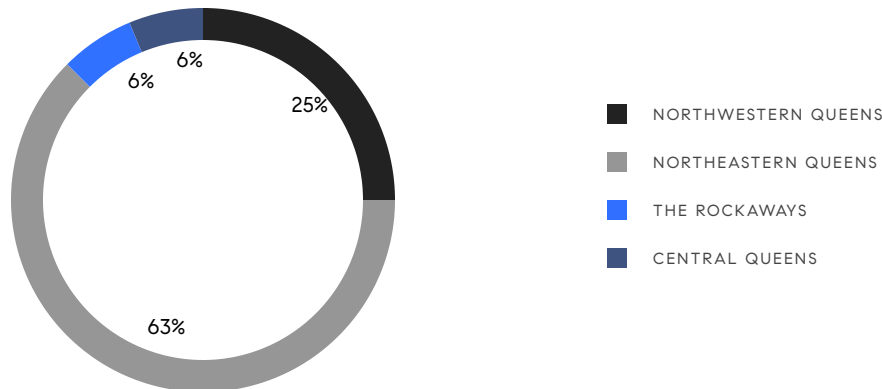
Total Volume

\$1,020

Average PPSF

84

Average Days On Market



4

Condo Deal(s)

0

Co-op Deal(s)

12

Single-Family Deal(s)

\$2,306,667

Average Asking Price

\$0

Average Asking Price

\$1,729,084

Average Asking Price

\$2,424,000

Median Asking Price

\$0

Median Asking Price

\$1,784,000

Median Asking Price

\$1,877

Average PPSF

\$734

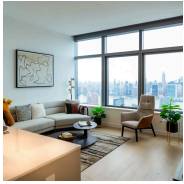
Average PPSF

1,307

Average SqFt

2,517

Average SqFt

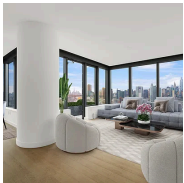


3 Court Square, Unit PH201

Long Island City

Contract Signed

Type	Condo	Price	\$2,728,668	Sq. Ft.	969	Beds	2
DOM	-	Initial	-	PPSF	\$2,816	Baths	2

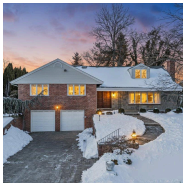


3 Court Square, Unit 2911

Long Island City

Contract Signed

Type	Condo	Price	\$2,699,000	Sq. Ft.	1,272	Beds	2
DOM	142	Initial	\$2,750,000	PPSF	\$2,122	Baths	2



216-29 28th Avenue

Bay Terrace

Contract Signed

Type	House	Price	\$2,198,000	Sq. Ft.	3,657	Beds	4
DOM	82	Initial	\$2,198,000	PPSF	\$602	Baths	4

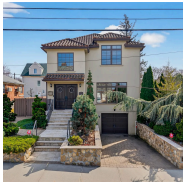


27-28 Thomson Avenue, Unit 514

Long Island City

Contract Signed

Type	Condo	Price	\$2,149,000	Sq. Ft.	1,762	Beds	2
DOM	22	Initial	\$2,149,000	PPSF	\$1,220	Baths	2

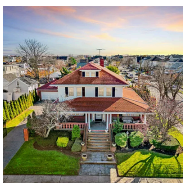


169-14 45th Avenue

Flushing

Contract Signed

Type	House	Price	\$2,038,000	Sq. Ft.	2,348	Beds	3
DOM	18	Initial	\$2,038,000	PPSF	\$868	Baths	2



142-15 Newport Avenue

Neponsit

Contract Signed

Type	House	Price	\$2,000,000	Sq. Ft.	2,392	Beds	3
DOM	109	Initial	\$2,000,000	PPSF	\$837	Baths	2

Compass is a licensed real estate broker and abides by Equal Housing Opportunity laws. All material presented herein is intended for informational purposes only. Information is compiled from sources deemed reliable but is subject to errors, omissions, changes in price, condition, sale, or withdrawal without notice. No statement is made as to the accuracy of any description. All measurements and square footages are approximate. This is not intended to solicit property already listed. Nothing herein shall be construed as legal, accounting or other professional advice outside the realm of real estate brokerage.

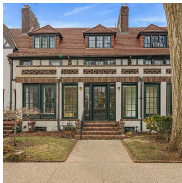


24-56 Little Neck Boulevard

Contract Signed

Bay Terrace

Type	House	Price	\$1,999,000	Sq. Ft.	2,626	Beds	4
DOM	149	Initial	\$2,088,000	PPSF	\$762	Baths	2

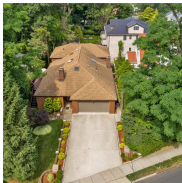


21 Ingram Street

Contract Signed

Forest Hills

Type	House	Price	\$1,998,000	Sq. Ft.	2,413	Beds	4
DOM	37	Initial	\$1,998,000	PPSF	\$829	Baths	3



51-10 Douglaston Parkway

Contract Signed

Douglaston

Type	House	Price	\$1,880,000	Sq. Ft.	4,096	Beds	4
DOM	104	Initial	\$1,880,000	PPSF	\$459	Baths	3

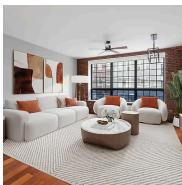


75-31 179th Street

Contract Signed

Utopia

Type	House	Price	\$1,688,000	Sq. Ft.	2,065	Beds	3
DOM	56	Initial	\$1,688,000	PPSF	\$818	Baths	2

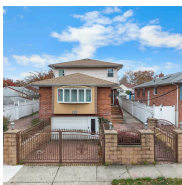


5-25 47th Road, Unit 2A

Contract Signed

Long Island City

Type	Condo	Price	\$1,650,000	Sq. Ft.	1,225	Beds	2
DOM	63	Initial	\$1,650,000	PPSF	\$1,347	Baths	2



208-22 26th Avenue

Contract Signed

Bayside

Type	House	Price	\$1,530,000	Sq. Ft.	2,356	Beds	6
DOM	143	Initial	\$1,630,000	PPSF	\$650	Baths	5

Compass is a licensed real estate broker and abides by Equal Housing Opportunity laws. All material presented herein is intended for informational purposes only. Information is compiled from sources deemed reliable but is subject to errors, omissions, changes in price, condition, sale, or withdrawal without notice. No statement is made as to the accuracy of any description. All measurements and square footages are approximate. This is not intended to solicit property already listed. Nothing herein shall be construed as legal, accounting or other professional advice outside the realm of real estate brokerage.



48-18 190th Street

Auburndale

Contract Signed

Type	House	Price	\$1,390,000	Sq. Ft.	1,318	Beds	5
DOM	266	Initial	\$1,688,000	PPSF	\$1,055	Baths	4



37-17 221st Street

Bayside

Contract Signed

Type	House	Price	\$1,350,000	Sq. Ft.	2,448	Beds	3
DOM	20	Initial	\$1,350,000	PPSF	\$552	Baths	3



3-28 149th Place

Whitestone

Contract Signed

Type	House	Price	\$1,350,000	Sq. Ft.	3,038	Beds	3
DOM	3	Initial	\$1,350,000	PPSF	\$445	Baths	2



26-23 Utopia Parkway

Auburndale

Contract Signed

Type	House	Price	\$1,328,000	Sq. Ft.	1,440	Beds	3
DOM	33	Initial	\$1,368,000	PPSF	\$923	Baths	3

Compass is a licensed real estate broker and abides by Equal Housing Opportunity laws. All material presented herein is intended for informational purposes only. Information is compiled from sources deemed reliable but is subject to errors, omissions, changes in price, condition, sale, or withdrawal without notice. No statement is made as to the accuracy of any description. All measurements and square footages are approximate. This is not intended to solicit property already listed. Nothing herein shall be construed as legal, accounting or other professional advice outside the realm of real estate brokerage.