



COMPASS

Queens Luxury Report

Mar 30 - Apr 05, 2026, Residential Contracts \$1.25M+

Photo: [11-02 49th Avenue, Unit 4H](#)

The Queens luxury real estate market, defined as all properties priced \$1.25M and above, saw 8 contracts signed this week, made up of 4 condos, and 4 houses. The previous week saw 11 deals. For more information or data, please reach out to a Compass agent.

\$1,772,361
 Average Asking Price

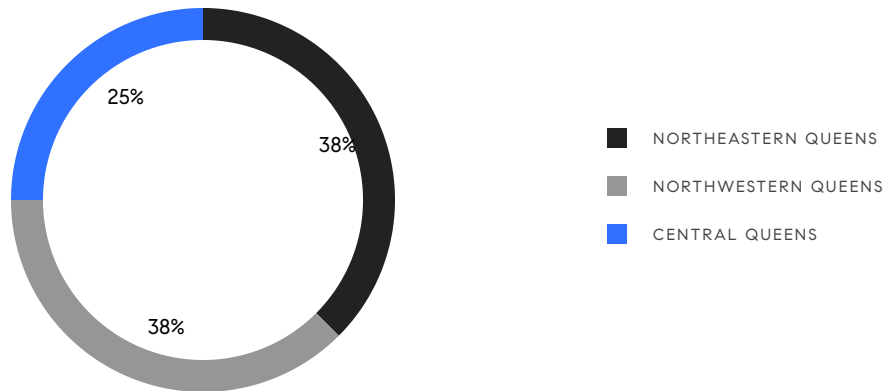
\$1,662,000
 Median Asking Price

\$1,012
 Average PPSF

0%
 Average Discount

\$14,178,888
 Total Volume

87
 Average Days On Market



4
 Condo Deal(s)

0
 Co-op Deal(s)

4
 Single-Family Deal(s)

\$1,519,750
 Average Asking Price

\$0
 Average Asking Price

\$2,024,972
 Average Asking Price

\$1,539,500
 Median Asking Price

\$0
 Median Asking Price

\$1,756,500
 Median Asking Price

\$1,358
 Average PPSF

\$667
 Average PPSF

1,125
 Average SqFt

3,219
 Average SqFt



6 Westmoreland Place

Douglaston

Contract Signed

Type	House	Price	\$3,188,888	Sq. Ft.	5,600	Beds	5
DOM	104	Initial	\$3,188,888	PPSF	\$570	Baths	3.5

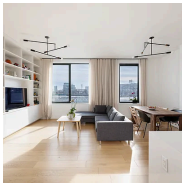


10-42 Utopia Parkway

Beechhurst

Contract Signed

Type	House	Price	\$1,888,000	Sq. Ft.	3,300	Beds	3
DOM	13	Initial	\$1,888,000	PPSF	\$573	Baths	4



22-18 Jackson Avenue, Unit 408

Long Island City

Contract Signed

Type	Condo	Price	\$1,750,000	Sq. Ft.	1,267	Beds	2
DOM	34	Initial	\$1,750,000	PPSF	\$1,382	Baths	2

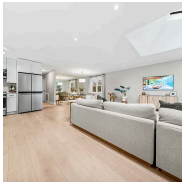


21-21 31st Street, Unit 4E

Astoria

Contract Signed

Type	Condo	Price	\$1,699,000	Sq. Ft.	1,288	Beds	2
DOM	197	Initial	\$1,699,000	PPSF	\$1,320	Baths	2



30-04 73rd Street

Jackson Heights

Contract Signed

Type	House	Price	\$1,625,000	Sq. Ft.	2,000	Beds	4
DOM	36	Initial	\$1,625,000	PPSF	\$813	Baths	2.5



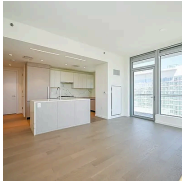
63-48 83rd Street

Middle Village

Contract Signed

Type	House	Price	\$1,398,000	Sq. Ft.	1,974	Beds	3
DOM	74	Initial	\$1,398,000	PPSF	\$709	Baths	1

Compass is a licensed real estate broker and abides by Equal Housing Opportunity laws. All material presented herein is intended for informational purposes only. Information is compiled from sources deemed reliable but is subject to errors, omissions, changes in price, condition, sale, or withdrawal without notice. No statement is made as to the accuracy of any description. All measurements and square footages are approximate. This is not intended to solicit property already listed. Nothing herein shall be construed as legal, accounting or other professional advice outside the realm of real estate brokerage.



133-27 39th Avenue, Unit 7

Contract Signed

Flushing

Type	Condo	Price	\$1,380,000	Sq. Ft.	1,080	Beds	2
DOM	148	Initial	\$1,380,000	PPSF	\$1,278	Baths	2



25-23 Newtown Avenue, Unit PHB

Contract Signed

Astoria

Type	Condo	Price	\$1,250,000	Sq. Ft.	862	Beds	2
DOM	-	Initial	\$1,250,000	PPSF	\$1,451	Baths	2

Compass is a licensed real estate broker and abides by Equal Housing Opportunity laws. All material presented herein is intended for informational purposes only. Information is compiled from sources deemed reliable but is subject to errors, omissions, changes in price, condition, sale, or withdrawal without notice. No statement is made as to the accuracy of any description. All measurements and square footages are approximate. This is not intended to solicit property already listed. Nothing herein shall be construed as legal, accounting or other professional advice outside the realm of real estate brokerage.