



COMPASS

Queens Luxury Report

Jan 26 - Feb 01, 2026, Residential Contracts \$1.25M+

Photo: [22-18 Jackson Avenue, Unit 719](#)

The Queens luxury real estate market, defined as all properties priced \$1.25M and above, saw 13 contracts signed this week, made up of 5 condos, and 8 houses. The previous week saw 11 deals. For more information or data, please reach out to a Compass agent.

\$1,601,577

Average Asking Price

\$1,550,000

Median Asking Price

\$936

Average PPSF

5%

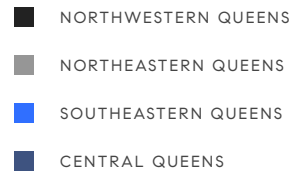
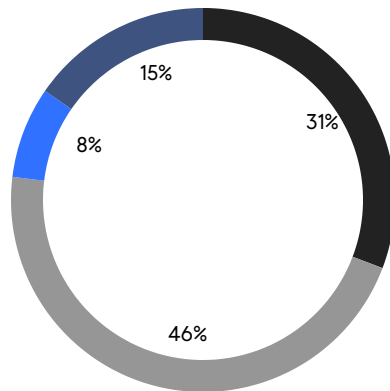
Average Discount

\$20,820,500

Total Volume

105

Average Days On Market



5

Condo Deal(s)

0

Co-op Deal(s)

8

Single-Family Deal(s)

\$1,625,700

Average Asking Price

\$0

Average Asking Price

\$1,586,500

Average Asking Price

\$1,699,500

Median Asking Price

\$0

Median Asking Price

\$1,522,000

Median Asking Price

\$1,456

Average PPSF

\$611

Average PPSF

1,118

Average SqFt

2,829

Average SqFt



11-36 45th Road, Unit 305A

Long Island City

Contract Signed

| | | | | | | | |
|------|-------|---------|-------------|---------|---------|-------|---|
| Type | Condo | Price | \$1,965,000 | Sq. Ft. | 1,135 | Beds | 3 |
| DOM | 3 | Initial | \$1,965,000 | PPSF | \$1,732 | Baths | 2 |

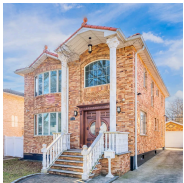


7-24 128th Street

College Point

Contract Signed

| | | | | | | | |
|------|-------|---------|-------------|---------|-------|-------|---|
| Type | House | Price | \$1,899,000 | Sq. Ft. | 3,000 | Beds | 6 |
| DOM | 155 | Initial | \$2,388,000 | PPSF | \$633 | Baths | 4 |

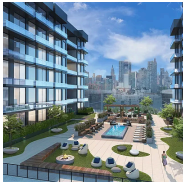


53-12 199th Street

Auburndale

Contract Signed

| | | | | | | | |
|------|-------|---------|-------------|---------|-------|-------|---|
| Type | House | Price | \$1,780,000 | Sq. Ft. | 4,000 | Beds | 3 |
| DOM | 13 | Initial | \$1,780,000 | PPSF | \$445 | Baths | 4 |

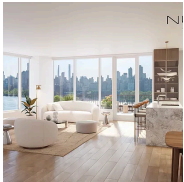


11-36 45th Road, Unit 205B

Long Island City

Contract Signed

| | | | | | | | |
|------|-------|---------|-------------|---------|---------|-------|---|
| Type | Condo | Price | \$1,735,000 | Sq. Ft. | 1,067 | Beds | 2 |
| DOM | 155 | Initial | \$1,735,000 | PPSF | \$1,627 | Baths | 2 |

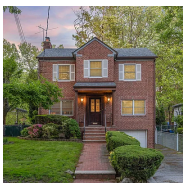


30-45 Vernon Boulevard, Unit 9E

Astoria

Contract Signed

| | | | | | | | |
|------|-------|---------|-------------|---------|---------|-------|---|
| Type | Condo | Price | \$1,699,500 | Sq. Ft. | 1,172 | Beds | 2 |
| DOM | 2 | Initial | \$1,699,500 | PPSF | \$1,451 | Baths | 2 |



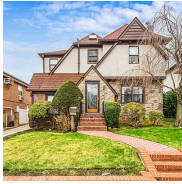
86-49 Dunton Street

Holliswood

Contract Signed

| | | | | | | | |
|------|-------|---------|-------------|---------|-------|-------|---|
| Type | House | Price | \$1,690,000 | Sq. Ft. | 3,150 | Beds | 5 |
| DOM | 231 | Initial | \$1,995,000 | PPSF | \$537 | Baths | 4 |

Compass is a licensed real estate broker and abides by Equal Housing Opportunity laws. All material presented herein is intended for informational purposes only. Information is compiled from sources deemed reliable but is subject to errors, omissions, changes in price, condition, sale, or withdrawal without notice. No statement is made as to the accuracy of any description. All measurements and square footages are approximate. This is not intended to solicit property already listed. Nothing herein shall be construed as legal, accounting or other professional advice outside the realm of real estate brokerage.



160-22 10th Avenue

Whitestone

Contract Signed

| | | | | | | | |
|------|-------|---------|-------------|---------|-------|-------|-----|
| Type | House | Price | \$1,550,000 | Sq. Ft. | 2,000 | Beds | 4 |
| DOM | 13 | Initial | \$1,550,000 | PPSF | \$775 | Baths | 3.5 |



16 Ingram Street

Forest Hills

Contract Signed

| | | | | | | | |
|------|-------|---------|-------------|---------|-------|-------|-----|
| Type | House | Price | \$1,494,000 | Sq. Ft. | 1,680 | Beds | 4 |
| DOM | 71 | Initial | \$1,699,000 | PPSF | \$890 | Baths | 1.5 |



3 Beech Court Circle

College Point

Contract Signed

| | | | | | | | |
|------|-------|---------|-------------|---------|-------|-------|---|
| Type | House | Price | \$1,480,000 | Sq. Ft. | 4,300 | Beds | 5 |
| DOM | 425 | Initial | \$1,530,000 | PPSF | \$345 | Baths | 2 |

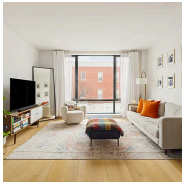


145-45 4th Avenue

Whitestone

Contract Signed

| | | | | | | | |
|------|-------|---------|-------------|---------|-------|-------|---|
| Type | House | Price | \$1,450,000 | Sq. Ft. | 2,547 | Beds | 3 |
| DOM | 68 | Initial | \$1,675,000 | PPSF | \$570 | Baths | 3 |



47-28 11th Street, Unit 2C

Long Island City

Contract Signed

| | | | | | | | |
|------|-------|---------|-------------|---------|---------|-------|---|
| Type | Condo | Price | \$1,400,000 | Sq. Ft. | 1,078 | Beds | 2 |
| DOM | 22 | Initial | \$1,400,000 | PPSF | \$1,299 | Baths | 2 |



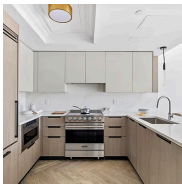
24914 Cambria Ave Avenue

Little Neck

Contract Signed

| | | | | | | | |
|------|-------|---------|-------------|---------|-------|-------|---|
| Type | House | Price | \$1,349,000 | Sq. Ft. | 1,950 | Beds | 3 |
| DOM | 96 | Initial | \$1,450,000 | PPSF | \$692 | Baths | 2 |

Compass is a licensed real estate broker and abides by Equal Housing Opportunity laws. All material presented herein is intended for informational purposes only. Information is compiled from sources deemed reliable but is subject to errors, omissions, changes in price, condition, sale, or withdrawal without notice. No statement is made as to the accuracy of any description. All measurements and square footages are approximate. This is not intended to solicit property already listed. Nothing herein shall be construed as legal, accounting or other professional advice outside the realm of real estate brokerage.



78-29 Austin Street, Unit 401
Forest Hills

Contract Signed

| | | | | | | | |
|------|-------|---------|-------------|---------|---------|-------|---|
| Type | Condo | Price | \$1,329,000 | Sq. Ft. | 1,136 | Beds | 2 |
| DOM | - | Initial | \$1,329,000 | PPSF | \$1,170 | Baths | 2 |

Compass is a licensed real estate broker and abides by Equal Housing Opportunity laws. All material presented herein is intended for informational purposes only. Information is compiled from sources deemed reliable but is subject to errors, omissions, changes in price, condition, sale, or withdrawal without notice. No statement is made as to the accuracy of any description. All measurements and square footages are approximate. This is not intended to solicit property already listed. Nothing herein shall be construed as legal, accounting or other professional advice outside the realm of real estate brokerage.