



COMPASS

Queens Luxury Report

Jan 12 - 18, 2025, Residential Contracts \$1.25M+

Photo: 21-10 44th Drive, Unit PHA

The Queens luxury real estate market, defined as all properties priced \$1.25M and above, saw 11 contracts signed this week, made up of 7 condos, and 4 houses. The previous week saw 9 deals. For more information or data, please reach out to a Compass agent.

\$1,630,273

Average Asking Price

\$1,590,000

Median Asking Price

\$1,187

Average PPSF

3%

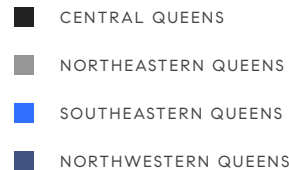
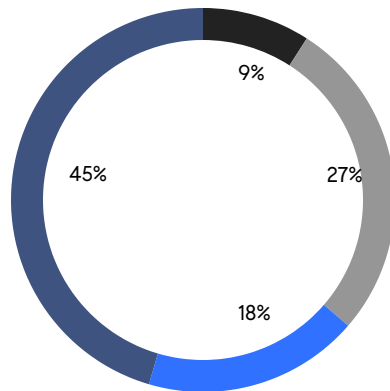
Average Discount

\$17,933,000

Total Volume

121

Average Days On Market



7

Condo Deal(s)

0

Co-op Deal(s)

4

Single-Family Deal(s)

\$1,656,429

Average Asking Price

\$0

Average Asking Price

\$1,584,500

Average Asking Price

\$1,590,000

Median Asking Price

\$0

Median Asking Price

\$1,494,500

Median Asking Price

\$1,442

Average PPSF

\$739

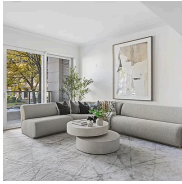
Average PPSF

1,216

Average SqFt

2,180

Average SqFt



78-29 Austin Street, Unit TH9

Forest Hills

Contract Signed

Type	Condo	Price	\$2,325,000	Sq. Ft.	2,151	Beds	3
DOM	-	Initial	\$2,325,000	PPSF	\$1,081	Baths	3



209-25 28th Avenue

Bayside

Contract Signed

Type	House	Price	\$2,050,000	Sq. Ft.	2,377	Beds	3
DOM	55	Initial	\$2,050,000	PPSF	\$863	Baths	4



193-46 McLaughlin Avenue

Holliswood Jamaica

Contract Signed

Type	House	Price	\$1,650,000	Sq. Ft.	1,896	Beds	4
DOM	253	Initial	\$1,650,000	PPSF	\$871	Baths	3



11-36 45th Road, Unit 301A

Long Island City

Contract Signed

Type	Condo	Price	\$1,610,000	Sq. Ft.	901	Beds	2
DOM	146	Initial	\$1,610,000	PPSF	\$1,787	Baths	2

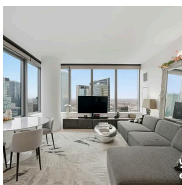


22-43 Jackson Avenue, Unit 8B

Long Island City

Contract Signed

Type	Condo	Price	\$1,600,000	Sq. Ft.	944	Beds	2
DOM	15	Initial	\$1,600,000	PPSF	\$1,695	Baths	2



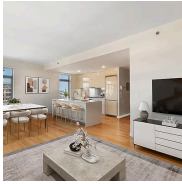
3 Court Square, Unit 4308

Long Island City

Contract Signed

Type	Condo	Price	\$1,590,000	Sq. Ft.	964	Beds	2
DOM	60	Initial	\$1,687,000	PPSF	\$1,650	Baths	2

Compass is a licensed real estate broker and abides by Equal Housing Opportunity laws. All material presented herein is intended for informational purposes only. Information is compiled from sources deemed reliable but is subject to errors, omissions, changes in price, condition, sale, or withdrawal without notice. No statement is made as to the accuracy of any description. All measurements and square footages are approximate. This is not intended to solicit property already listed. Nothing herein shall be construed as legal, accounting or other professional advice outside the realm of real estate brokerage.

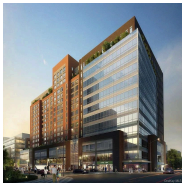


11-02 49th Avenue, Unit 8A

Long Island City

Contract Signed

Type	Condo	Price	\$1,500,000	Sq. Ft.	1,338	Beds	2
DOM	216	Initial	\$1,695,000	PPSF	\$1,122	Baths	2



138-35 39th Avenue, Unit 8G

Flushing

Contract Signed

Type	Condo	Price	\$1,490,000	Sq. Ft.	1,283	Beds	3
DOM	160	Initial	\$1,650,000	PPSF	\$1,162	Baths	2



24-12 42nd Road, Unit 6C

Long Island City

Contract Signed

Type	Condo	Price	\$1,480,000	Sq. Ft.	927	Beds	2
DOM	140	Initial	\$1,480,000	PPSF	\$1,597	Baths	2



75-23 196th Street

Fresh Meadows

Contract Signed

Type	House	Price	\$1,339,000	Sq. Ft.	1,869	Beds	3
DOM	73	Initial	\$1,430,000	PPSF	\$717	Baths	2



196-33 Foothill Avenue

Holliswood Jamaica

Contract Signed

Type	House	Price	\$1,299,000	Sq. Ft.	2,576	Beds	8
DOM	92	Initial	\$1,299,000	PPSF	\$505	Baths	3

Compass is a licensed real estate broker and abides by Equal Housing Opportunity laws. All material presented herein is intended for informational purposes only. Information is compiled from sources deemed reliable but is subject to errors, omissions, changes in price, condition, sale, or withdrawal without notice. No statement is made as to the accuracy of any description. All measurements and square footages are approximate. This is not intended to solicit property already listed. Nothing herein shall be construed as legal, accounting or other professional advice outside the realm of real estate brokerage.