



COMPASS

Queens Luxury Report

Dec 22 - 28, 2025, Residential Contracts \$1.25M+

Photo: [1463 Burton Street](#)

The Queens luxury real estate market, defined as all properties priced \$1.25M and above, saw 16 contracts signed this week, made up of 4 condos, and 12 houses. The previous week saw 11 deals. For more information or data, please reach out to a Compass agent.

\$1,663,743

Average Asking Price

\$1,547,000

Median Asking Price

\$1,797

Average PPSF

3%

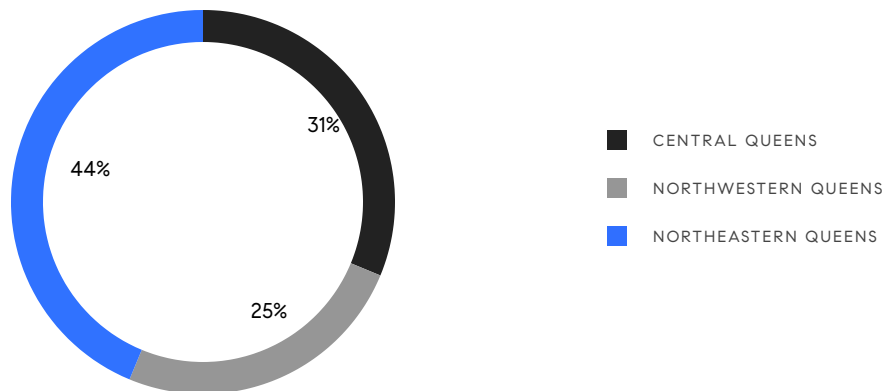
Average Discount

\$26,619,886

Total Volume

138

Average Days On Market



4

Condo Deal(s)

0

Co-op Deal(s)

12

Single-Family Deal(s)

\$1,667,500

Average Asking Price

\$0

Average Asking Price

\$1,662,491

Average Asking Price

\$1,675,000

Median Asking Price

\$0

Median Asking Price

\$1,444,000

Median Asking Price

\$1,602

Average PPSF

\$1,875

Average PPSF

1,050

Average SqFt

2,546

Average SqFt



115-18 Mayfair Road

Kew Gardens

Contract Signed

Type	House	Price	\$3,300,000	Sq. Ft.	6,600	Beds	7
DOM	154	Initial	\$3,688,000	PPSF	\$500	Baths	7



112-10 68th Avenue

Forest Hills

Contract Signed

Type	House	Price	\$2,240,000	Sq. Ft.	1,800	Beds	3
DOM	-	Initial	\$2,240,000	PPSF	\$12,445	Baths	2



11-36 45th Road, Unit PH5B

Long Island City

Contract Signed

Type	Condo	Price	\$1,870,000	Sq. Ft.	1,133	Beds	2
DOM	3	Initial	\$1,875,000	PPSF	\$1,651	Baths	2



11-36 45th Road, Unit 505B

Long Island City

Contract Signed

Type	Condo	Price	\$1,755,000	Sq. Ft.	1,083	Beds	2
DOM	5	Initial	\$1,755,000	PPSF	\$1,621	Baths	2



83-47 Abingdon Road

Kew Gardens

Contract Signed

Type	House	Price	\$1,700,000	Sq. Ft.	2,536	Beds	5
DOM	27	Initial	\$1,700,000	PPSF	\$671	Baths	3



69-54 180th Street

Fresh Meadows

Contract Signed

Type	House	Price	\$1,699,999	Sq. Ft.	2,016	Beds	4
DOM	12	Initial	\$1,699,999	PPSF	\$844	Baths	4

Compass is a licensed real estate broker and abides by Equal Housing Opportunity laws. All material presented herein is intended for informational purposes only. Information is compiled from sources deemed reliable but is subject to errors, omissions, changes in price, condition, sale, or withdrawal without notice. No statement is made as to the accuracy of any description. All measurements and square footages are approximate. This is not intended to solicit property already listed. Nothing herein shall be construed as legal, accounting or other professional advice outside the realm of real estate brokerage.



33-07 153rd Street

Flushing

Contract Signed

Type	House	Price	\$1,688,000	Sq. Ft.	3,464	Beds	4
DOM	11	Initial	\$1,688,000	PPSF	\$488	Baths	3



11-36 45th Road, Unit 602A

Long Island City

Contract Signed

Type	Condo	Price	\$1,595,000	Sq. Ft.	875	Beds	2
DOM	3	Initial	\$1,595,000	PPSF	\$1,823	Baths	2

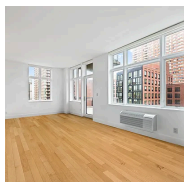


56-12 135th Street

Queensboro Hill

Contract Signed

Type	House	Price	\$1,499,000	Sq. Ft.	1,636	Beds	5
DOM	90	Initial	\$1,599,000	PPSF	\$917	Baths	3

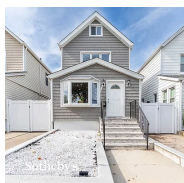


2-26 50th Avenue, Unit 10F

Long Island City

Contract Signed

Type	Condo	Price	\$1,449,999	Sq. Ft.	1,107	Beds	2
DOM	184	Initial	\$1,515,000	PPSF	\$1,310	Baths	2



91-27 71st Avenue

Forest Hills

Contract Signed

Type	House	Price	\$1,389,000	Sq. Ft.	2,070	Beds	3
DOM	477	Initial	\$1,390,000	PPSF	\$672	Baths	2.5



63-16 84th Place

Middle Village

Contract Signed

Type	House	Price	\$1,299,000	Sq. Ft.	-	Beds	3
DOM	295	Initial	\$1,399,000	PPSF	-	Baths	1

Compass is a licensed real estate broker and abides by Equal Housing Opportunity laws. All material presented herein is intended for informational purposes only. Information is compiled from sources deemed reliable but is subject to errors, omissions, changes in price, condition, sale, or withdrawal without notice. No statement is made as to the accuracy of any description. All measurements and square footages are approximate. This is not intended to solicit property already listed. Nothing herein shall be construed as legal, accounting or other professional advice outside the realm of real estate brokerage.



219-08 38th Avenue

Bayside

Contract Signed

Type	House	Price	\$1,298,000	Sq. Ft.	-	Beds	4
DOM	331	Initial	\$1,350,000	PPSF	-	Baths	2



151-25 21st Avenue

Whitestone

Contract Signed

Type	House	Price	\$1,298,000	Sq. Ft.	2,100	Beds	4
DOM	81	Initial	\$1,398,000	PPSF	\$619	Baths	2



49-75 175th Place

Flushing

Contract Signed

Type	House	Price	\$1,288,888	Sq. Ft.	1,480	Beds	5
DOM	196	Initial	\$1,368,000	PPSF	\$871	Baths	2



40-05 203rd Street

Auburndale

Contract Signed

Type	House	Price	\$1,250,000	Sq. Ft.	1,752	Beds	5
DOM	190	Initial	\$1,450,000	PPSF	\$714	Baths	2

Compass is a licensed real estate broker and abides by Equal Housing Opportunity laws. All material presented herein is intended for informational purposes only. Information is compiled from sources deemed reliable but is subject to errors, omissions, changes in price, condition, sale, or withdrawal without notice. No statement is made as to the accuracy of any description. All measurements and square footages are approximate. This is not intended to solicit property already listed. Nothing herein shall be construed as legal, accounting or other professional advice outside the realm of real estate brokerage.