



COMPASS

Queens Luxury Report

July 29 - August 03, 2025, Residential Contracts \$1.25M+

Photo: 12-16 30th Ave, Unit 201

The Queens luxury real estate market, defined as all properties priced \$1.25M and above, saw 25 contracts signed this week, made up of 7 condos, 1 co-op, and 17 houses. The previous week saw 20 deals. For more information or data, please reach out to a Compass agent.

\$1,670,631

Average Asking Price

\$1,650,000

Median Asking Price

\$1,016

Average PPSF

3%

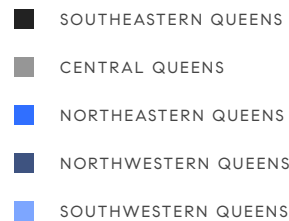
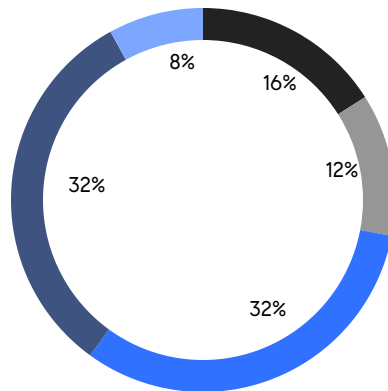
Average Discount

\$41,765,765

Total Volume

93

Average Days On Market

**7**

Condo Deal(s)

1

Co-op Deal(s)

17

Single-Family Deal(s)

\$1,664,286

Average Asking Price

\$1,350,000

Average Asking Price

\$1,692,104

Average Asking Price

\$1,650,000

Median Asking Price

\$1,350,000

Median Asking Price

\$1,650,000

Median Asking Price

\$1,595

Average PPSF

\$768

Average PPSF

1,062

Average SqFt

2,345

Average SqFt

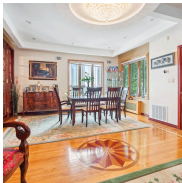


178-23 Edgerton Road

Jamaica Estates

Contract Signed

Type	House	Price	\$2,699,000	Sq. Ft.	3,000	Beds	5
DOM	48	Initial	\$2,699,000	PPSF	\$900	Baths	4

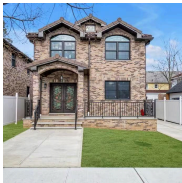


71-38 Harrow Street

Forest Hills

Contract Signed

Type	House	Price	\$2,350,000	Sq. Ft.	2,262	Beds	5
DOM	107	Initial	\$2,350,000	PPSF	\$1,039	Baths	3



34-09 Corporal Kennedy Street

Bayside

Contract Signed

Type	House	Price	\$2,030,000	Sq. Ft.	3,125	Beds	4
DOM	105	Initial	\$2,030,000	PPSF	\$650	Baths	4



163-61 20th Avenue

Clearview

Contract Signed

Type	House	Price	\$1,888,000	Sq. Ft.	2,262	Beds	3
DOM	110	Initial	\$1,988,000	PPSF	\$835	Baths	4



11-36 45th Road, Unit 506A

Long Island City

Contract Signed

Type	Condo	Price	\$1,825,000	Sq. Ft.	1,108	Beds	2
DOM	6	Initial	\$1,825,000	PPSF	\$1,648	Baths	2



11-36 45th Road, Unit PH1A

Long Island City

Contract Signed

Type	Condo	Price	\$1,810,000	Sq. Ft.	989	Beds	2
DOM	6	Initial	\$1,810,000	PPSF	\$1,831	Baths	2

Compass is a licensed real estate broker and abides by Equal Housing Opportunity laws. All material presented herein is intended for informational purposes only. Information is compiled from sources deemed reliable but is subject to errors, omissions, changes in price, condition, sale, or withdrawal without notice. No statement is made as to the accuracy of any description. All measurements and square footages are approximate. This is not intended to solicit property already listed. Nothing herein shall be construed as legal, accounting or other professional advice outside the realm of real estate brokerage.



26-44 211th Street

Bayside

Contract Signed

Type	House	Price	\$1,800,000	Sq. Ft.	-	Beds	4
DOM	302	Initial	\$2,350,000	PPSF	-	Baths	3



40-46 24th Street, Unit PHD

Astoria

Contract Signed

Type	Condo	Price	\$1,790,000	Sq. Ft.	1,340	Beds	3
DOM	200	Initial	\$1,995,000	PPSF	\$1,336	Baths	2

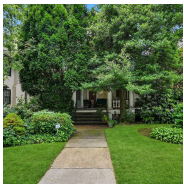


86-41 Marengo Avenue

Holliswood

Contract Signed

Type	House	Price	\$1,778,000	Sq. Ft.	2,349	Beds	3
DOM	6	Initial	\$1,778,000	PPSF	\$757	Baths	3



84-36 Abingdon Road

Kew Gardens

Contract Signed

Type	House	Price	\$1,700,000	Sq. Ft.	2,637	Beds	7
DOM	18	Initial	\$1,700,000	PPSF	\$645	Baths	4

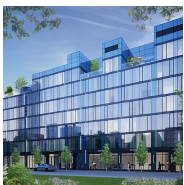


86-55 Santiago Street

Holliswood

Contract Signed

Type	House	Price	\$1,699,000	Sq. Ft.	2,893	Beds	5
DOM	297	Initial	\$1,888,000	PPSF	\$588	Baths	3



11-36 45th Road, Unit 501A

Long Island City

Contract Signed

Type	Condo	Price	\$1,650,000	Sq. Ft.	901	Beds	2
DOM	7	Initial	\$1,650,000	PPSF	\$1,832	Baths	2

Compass is a licensed real estate broker and abides by Equal Housing Opportunity laws. All material presented herein is intended for informational purposes only. Information is compiled from sources deemed reliable but is subject to errors, omissions, changes in price, condition, sale, or withdrawal without notice. No statement is made as to the accuracy of any description. All measurements and square footages are approximate. This is not intended to solicit property already listed. Nothing herein shall be construed as legal, accounting or other professional advice outside the realm of real estate brokerage.



3-27 Cresthaven Lane

Flushing

Contract Signed

Type	House	Price	\$1,650,000	Sq. Ft.	2,686	Beds	5
DOM	15	Initial	\$1,650,000	PPSF	\$615	Baths	3



28-06 34th Avenue

Astoria

Contract Signed

Type	House	Price	\$1,649,000	Sq. Ft.	1,700	Beds	4
DOM	71	Initial	\$1,729,000	PPSF	\$970	Baths	3

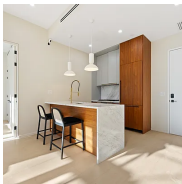


11-36 45th Road, Unit 409A

Long Island City

Contract Signed

Type	Condo	Price	\$1,585,000	Sq. Ft.	909	Beds	2
DOM	-	Initial	\$1,585,000	PPSF	\$1,744	Baths	2

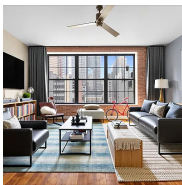


31-16 21st Street, Unit PH2A

Astoria

Contract Signed

Type	Condo	Price	\$1,499,999	Sq. Ft.	990	Beds	2
DOM	74	Initial	\$1,499,999	PPSF	\$1,516	Baths	2



42-60 Crescent Street, Unit 7D

Long Island City

Contract Signed

Type	Condo	Price	\$1,490,000	Sq. Ft.	1,191	Beds	2
DOM	105	Initial	\$1,590,000	PPSF	\$1,252	Baths	2



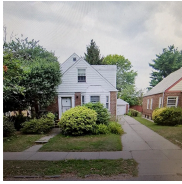
222-47 Garland Drive

Bayside

Contract Signed

Type	House	Price	\$1,468,000	Sq. Ft.	2,430	Beds	3
DOM	60	Initial	\$1,468,000	PPSF	\$605	Baths	3

Compass is a licensed real estate broker and abides by Equal Housing Opportunity laws. All material presented herein is intended for informational purposes only. Information is compiled from sources deemed reliable but is subject to errors, omissions, changes in price, condition, sale, or withdrawal without notice. No statement is made as to the accuracy of any description. All measurements and square footages are approximate. This is not intended to solicit property already listed. Nothing herein shall be construed as legal, accounting or other professional advice outside the realm of real estate brokerage.



67-16 147th Street

Kew Gardens Hills

Contract Signed

Type	House	Price	\$1,399,888	Sq. Ft.	1,114	Beds	4
DOM	16	Initial	\$1,399,888	PPSF	\$1,257	Baths	1

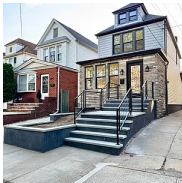


88-38 191st Street

Hollis

Contract Signed

Type	House	Price	\$1,399,000	Sq. Ft.	2,649	Beds	4
DOM	19	Initial	\$1,399,000	PPSF	\$529	Baths	2

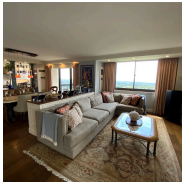


88-31 69th Avenue

Forest Hills

Contract Signed

Type	House	Price	\$1,398,000	Sq. Ft.	1,360	Beds	3
DOM	62	Initial	\$1,448,000	PPSF	\$1,028	Baths	2.5

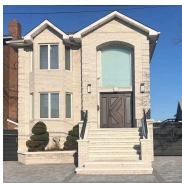


269 Grand Central Parkway, Unit 30V

Glen Oaks

Contract Signed

Type	Coop	Price	\$1,350,000	Sq. Ft.	1,972	Beds	3
DOM	11	Initial	\$1,350,000	PPSF	\$685	Baths	3

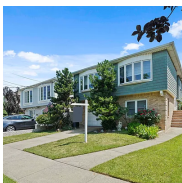


162-49 95th Street

Old Howard Beach

Contract Signed

Type	House	Price	\$1,299,990	Sq. Ft.	-	Beds	4
DOM	517	Initial	\$1,499,000	PPSF	-	Baths	4



160-39 91st Street

Howard Beach

Contract Signed

Type	House	Price	\$1,299,000	Sq. Ft.	2,366	Beds	4
DOM	29	Initial	\$1,299,000	PPSF	\$550	Baths	3

Compass is a licensed real estate broker and abides by Equal Housing Opportunity laws. All material presented herein is intended for informational purposes only. Information is compiled from sources deemed reliable but is subject to errors, omissions, changes in price, condition, sale, or withdrawal without notice. No statement is made as to the accuracy of any description. All measurements and square footages are approximate. This is not intended to solicit property already listed. Nothing herein shall be construed as legal, accounting or other professional advice outside the realm of real estate brokerage.



39-35 233rd Street
Douglaston-little Neck

Contract Signed

Type	House	Price	\$1,258,888	Sq. Ft.	2,336	Beds	3
DOM	21	Initial	\$1,258,888	PPSF	\$539	Baths	3.5

Compass is a licensed real estate broker and abides by Equal Housing Opportunity laws. All material presented herein is intended for informational purposes only. Information is compiled from sources deemed reliable but is subject to errors, omissions, changes in price, condition, sale, or withdrawal without notice. No statement is made as to the accuracy of any description. All measurements and square footages are approximate. This is not intended to solicit property already listed. Nothing herein shall be construed as legal, accounting or other professional advice outside the realm of real estate brokerage.