



COMPASS

Queens Luxury Report

July 21 - 27, 2025, Residential Contracts \$1.25M+

Photo: [11-20 Shore Road](#)

The Queens luxury real estate market, defined as all properties priced \$1.25M and above, saw 20 contracts signed this week, made up of 2 condos, and 18 houses. The previous week saw 12 deals. For more information or data, please reach out to a Compass agent.

\$1,883,995

Average Asking Price

\$1,536,500

Median Asking Price

\$847

Average PPSF

3%

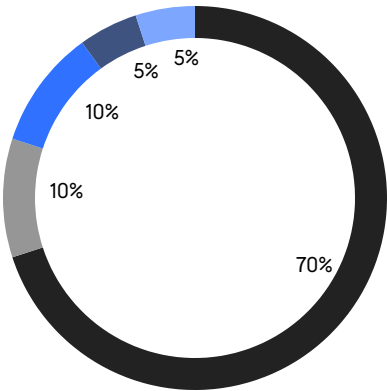
Average Discount

\$37,679,888

Total Volume

73

Average Days On Market



- NORTHEASTERN QUEENS
- CENTRAL QUEENS
- NORTHWESTERN QUEENS
- THE ROCKAWAYS
- SOUTHWESTERN QUEENS

2

Condo Deal(s)

0

Co-op Deal(s)

18

Single-Family Deal(s)

\$1,735,000

Average Asking Price

\$0

Average Asking Price

\$1,900,550

Average Asking Price

\$1,735,000

Median Asking Price

\$0

Median Asking Price

\$1,519,000

Median Asking Price

\$1,505

Average PPSF

\$764

Average PPSF

1,166

Average SqFt

2,752

Average SqFt



125 Malba Drive

Whitestone

Contract Signed

Type	House	Price	\$5,900,000	Sq. Ft.	9,375	Beds	6
DOM	148	Initial	\$6,988,888	PPSF	\$630	Baths	5

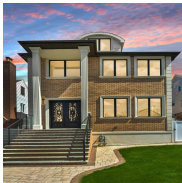


3223 214th Street

Bayside

Contract Signed

Type	House	Price	\$2,568,000	Sq. Ft.	4,000	Beds	6
DOM	41	Initial	\$2,699,000	PPSF	\$642	Baths	4



76-47 173rd Street

Hillcrest

Contract Signed

Type	House	Price	\$2,478,000	Sq. Ft.	2,300	Beds	5
DOM	97	Initial	\$2,568,000	PPSF	\$1,078	Baths	4



83 Beechknoll Road

Forest Hills

Contract Signed

Type	House	Price	\$2,398,000	Sq. Ft.	3,751	Beds	5
DOM	14	Initial	\$2,398,000	PPSF	\$640	Baths	4



11-36 45th Road, Unit 206A

Long Island City

Contract Signed

Type	Condo	Price	\$1,985,000	Sq. Ft.	1,103	Beds	2
DOM	3	Initial	\$1,985,000	PPSF	\$1,800	Baths	2



172 Beach 136th Street

Belle Harbor

Contract Signed

Type	House	Price	\$1,798,000	Sq. Ft.	3,000	Beds	6
DOM	67	Initial	\$1,798,000	PPSF	\$600	Baths	4

Compass is a licensed real estate broker and abides by Equal Housing Opportunity laws. All material presented herein is intended for informational purposes only. Information is compiled from sources deemed reliable but is subject to errors, omissions, changes in price, condition, sale, or withdrawal without notice. No statement is made as to the accuracy of any description. All measurements and square footages are approximate. This is not intended to solicit property already listed. Nothing herein shall be construed as legal, accounting or other professional advice outside the realm of real estate brokerage.



161-36 90th Street

Rockwood Park

Contract Signed

Type	House	Price	\$1,788,000	Sq. Ft.	2,597	Beds	3
DOM	50	Initial	\$1,788,000	PPSF	\$689	Baths	2



75-60 180th Street

Utopia

Contract Signed

Type	House	Price	\$1,699,000	Sq. Ft.	2,268	Beds	4
DOM	143	Initial	\$1,788,000	PPSF	\$750	Baths	3



15707 22nd Avenue

Flushing

Contract Signed

Type	House	Price	\$1,698,000	Sq. Ft.	2,184	Beds	3
DOM	48	Initial	\$1,698,000	PPSF	\$778	Baths	3

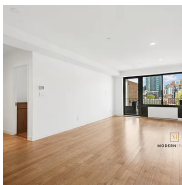


157-47 11th Avenue

Beechhurst

Contract Signed

Type	House	Price	\$1,588,000	Sq. Ft.	2,600	Beds	4
DOM	19	Initial	\$1,588,000	PPSF	\$611	Baths	2



10-55 47th Avenue, Unit 5E

Long Island City

Contract Signed

Type	Condo	Price	\$1,485,000	Sq. Ft.	1,228	Beds	2
DOM	94	Initial	\$1,685,000	PPSF	\$1,210	Baths	2



92-11 70th Avenue

Forest Hills

Contract Signed

Type	House	Price	\$1,450,000	Sq. Ft.	1,865	Beds	3
DOM	55	Initial	\$1,498,000	PPSF	\$778	Baths	2.5

Compass is a licensed real estate broker and abides by Equal Housing Opportunity laws. All material presented herein is intended for informational purposes only. Information is compiled from sources deemed reliable but is subject to errors, omissions, changes in price, condition, sale, or withdrawal without notice. No statement is made as to the accuracy of any description. All measurements and square footages are approximate. This is not intended to solicit property already listed. Nothing herein shall be construed as legal, accounting or other professional advice outside the realm of real estate brokerage.

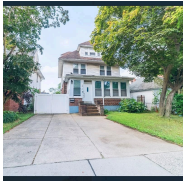


6 Knollwood Avenue

Douglaston

Contract Signed

Type	House	Price	\$1,450,000	Sq. Ft.	1,872	Beds	3
DOM	-	Initial	\$1,450,000	PPSF	\$775	Baths	2



152-16 Roosevelt Avenue

Flushing

Contract Signed

Type	House	Price	\$1,398,888	Sq. Ft.	1,728	Beds	6
DOM	3	Initial	\$1,398,888	PPSF	\$810	Baths	3



2-23 149th Place

Whitestone

Contract Signed

Type	House	Price	\$1,398,000	Sq. Ft.	1,300	Beds	3
DOM	35	Initial	\$1,598,000	PPSF	\$1,076	Baths	3

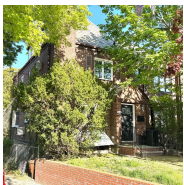


16-51 201st Street

Whitestone

Contract Signed

Type	House	Price	\$1,380,000	Sq. Ft.	1,550	Beds	4
DOM	82	Initial	\$1,380,000	PPSF	\$891	Baths	2



7335 141st Place

Kew Gardens Hills

Contract Signed

Type	House	Price	\$1,375,000	Sq. Ft.	2,000	Beds	4
DOM	87	Initial	\$1,375,000	PPSF	\$688	Baths	3



33-19 Bell Boulevard

Bayside

Contract Signed

Type	House	Price	\$1,290,000	Sq. Ft.	-	Beds	3
DOM	29	Initial	\$1,395,000	PPSF	-	Baths	2.5

Compass is a licensed real estate broker and abides by Equal Housing Opportunity laws. All material presented herein is intended for informational purposes only. Information is compiled from sources deemed reliable but is subject to errors, omissions, changes in price, condition, sale, or withdrawal without notice. No statement is made as to the accuracy of any description. All measurements and square footages are approximate. This is not intended to solicit property already listed. Nothing herein shall be construed as legal, accounting or other professional advice outside the realm of real estate brokerage.

**149-11 19th Avenue**

Whitestone

Contract Signed

Type	House	Price	\$1,280,000	Sq. Ft.	1,635	Beds	4
DOM	26	Initial	\$1,280,000	PPSF	\$783	Baths	1

**329 Forest Road**

Douglaston

Contract Signed

Type	House	Price	\$1,273,000	Sq. Ft.	-	Beds	3
DOM	330	Initial	\$1,395,000	PPSF	-	Baths	3

Compass is a licensed real estate broker and abides by Equal Housing Opportunity laws. All material presented herein is intended for informational purposes only. Information is compiled from sources deemed reliable but is subject to errors, omissions, changes in price, condition, sale, or withdrawal without notice. No statement is made as to the accuracy of any description. All measurements and square footages are approximate. This is not intended to solicit property already listed. Nothing herein shall be construed as legal, accounting or other professional advice outside the realm of real estate brokerage.