

COMPASS

---

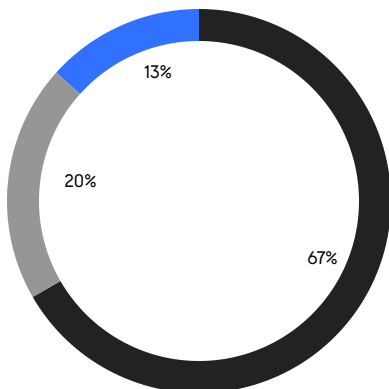
# QUEENS WEEKLY LUXURY REPORT



5 CENTER DRIVE

RESIDENTIAL CONTRACTS  
\$1.25 MILLION AND UP

- NORTHEASTERN QUEENS
- NORTHWESTERN QUEENS
- CENTRAL QUEENS



15  
CONTRACTS SIGNED  
THIS WEEK

\$22,243,688  
TOTAL CONTRACT VOLUME

The Queens luxury real estate market, defined as all properties priced \$1.25M and above, saw 15 contracts signed this week, made up of 1 condo, and 14 houses. The previous week saw 7 deals. For more information or data, please reach out to a Compass agent.

**\$1,482,913**

AVERAGE ASKING PRICE

**\$1,350,000**

MEDIAN ASKING PRICE

**\$878**

AVERAGE PPSF

**1%**

AVERAGE DISCOUNT

**\$22,243,688**

TOTAL VOLUME

**147**

AVERAGE DAYS ON MARKET

150-123 Powells Cove Boulevard entered contract this week, with a last asking price of \$2,100,000. Built in 2005, this single-family house spans 3,512 square feet with 4 beds and 3 full baths. It features an all-brick structure, high vaulted ceilings, a large basement, an expansive office space, a landscaped back and front yard, bridge and water views, water rights, and much more.

Also signed this week was 145-60 5th Avenue in Whitestone, with a last asking price of \$1,988,800. This new construction house spans 2,071 square feet with 3 beds and 4 baths. It features a 42-by-100-foot lot, wide-plan wood flooring throughout, a primary bedroom with walk-in closet and en-suite bath with glass shower and soaking tub, central heating and cooling throughout, a chef's kitchen with floating island and stone counters, a fully-finished basement, and much more.

**1**

CONDO DEAL(S)

**0**

CO-OP DEAL(S)

**14**

TOWNHOUSE DEAL(S)

**\$1,310,000**

AVERAGE ASKING PRICE

**\$0**

AVERAGE ASKING PRICE

**\$1,495,264**

AVERAGE ASKING PRICE

**\$1,310,000**

MEDIAN ASKING PRICE

**\$0**

MEDIAN ASKING PRICE

**\$1,350,000**

MEDIAN ASKING PRICE

**\$1,153**

AVERAGE PPSF

**\$855**

AVERAGE PPSF

**1,137**

AVERAGE SQFT

**1,886**

AVERAGE SQFT



### 150-123 POWELLS COVE BLVD

Whitestone

TYPE	TOWNHOUSE	STATUS	CONTRACT	ASK	\$2,100,000	INITIAL	\$2,200,000
SQFT	3,512	PPSF	\$598	BEDS	4	BATHS	3
FEES	\$1,417	DOM	102				



### 145-60 5TH AVE

Whitestone

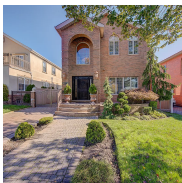
TYPE	TOWNHOUSE	STATUS	CONTRACT	ASK	\$1,988,800	INITIAL	\$1,988,800
SQFT	2,071	PPSF	\$960	BEDS	3	BATHS	4
FEES	\$564	DOM	39				



### 228-22 49TH ROAD

Bayside

TYPE	TOWNHOUSE	STATUS	CONTRACT	ASK	\$1,889,000	INITIAL	\$1,889,000
SQFT	2,702	PPSF	\$699	BEDS	4	BATHS	3.5
FEES	\$1,078	DOM	49				



### 48-29 188TH ST

Auburndale

TYPE	TOWNHOUSE	STATUS	CONTRACT	ASK	\$1,688,888	INITIAL	\$1,788,888
SQFT	N/A	PPSF	N/A	BEDS	3	BATHS	2.5
FEES	N/A	DOM	72				



### 22-25 27TH ST

Astoria

TYPE	TOWNHOUSE	STATUS	CONTRACT	ASK	\$1,499,000	INITIAL	\$1,499,000
SQFT	N/A	PPSF	N/A	BEDS	4	BATHS	2.5
FEES	\$730	DOM	42				



### 40-09 168TH ST

Murray Hill

TYPE	TOWNHOUSE	STATUS	CONTRACT	ASK	\$1,358,000	INITIAL	\$1,358,000
SQFT	2,010	PPSF	\$676	BEDS	5	BATHS	3
FEES	\$958	DOM	87				

Compass is a licensed real estate broker and abides by Equal Housing Opportunity laws. All material presented herein is intended for informational purposes only. Information is compiled from sources deemed reliable but is subject to errors, omissions, changes in price, condition, sale, or withdrawal without notice. No statement is made as to the accuracy of any description. All measurements and square footages are approximate. This is not intended to solicit property already listed. Nothing herein shall be construed as legal, accounting or other professional advice outside the realm of real estate brokerage.



### 73-91 PARK DRIVE EAST

Kew Gardens Hills

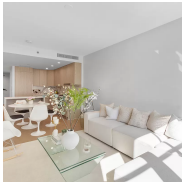
TYPE	TOWNHOUSE	STATUS	CONTRACT	ASK	\$1,350,000	INITIAL	\$1,350,000
SQFT	1,176	PPSF	\$1,148	BEDS	3	BATHS	3
FEES	\$949	DOM	39				



### 47-50 202ND ST

Auburndale

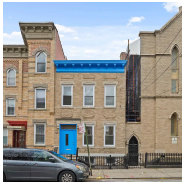
TYPE	TOWNHOUSE	STATUS	CONTRACT	ASK	\$1,350,000	INITIAL	\$1,350,000
SQFT	2,250	PPSF	\$600	BEDS	4	BATHS	2.5
FEES	\$917	DOM	56				



### 37-26 32ND ST #3A

Astoria

TYPE	CONDO	STATUS	CONTRACT	ASK	\$1,310,000	INITIAL	\$1,290,000
SQFT	1,137	PPSF	\$1,153	BEDS	2	BATHS	2
FEES	\$1,685	DOM	613				



### 17-35 LINDEN ST

Ridgewood

TYPE	TOWNHOUSE	STATUS	CONTRACT	ASK	\$1,299,000	INITIAL	\$1,299,000
SQFT	1,836	PPSF	\$708	BEDS	4	BATHS	1.5
FEES	\$556	DOM	414				



### 47-17 39TH AVE

Sunnyside

TYPE	TOWNHOUSE	STATUS	CONTRACT	ASK	\$1,295,000	INITIAL	\$1,363,000
SQFT	952	PPSF	\$1,360	BEDS	3	BATHS	1
FEES	\$572	DOM	203				



### 76-66 174TH ST

Hillcrest

TYPE	TOWNHOUSE	STATUS	CONTRACT	ASK	\$1,288,000	INITIAL	\$1,348,800
SQFT	1,700	PPSF	\$758	BEDS	4	BATHS	2.5
FEES	\$909	DOM	62				

Compass is a licensed real estate broker and abides by Equal Housing Opportunity laws. All material presented herein is intended for informational purposes only. Information is compiled from sources deemed reliable but is subject to errors, omissions, changes in price, condition, sale, or withdrawal without notice. No statement is made as to the accuracy of any description. All measurements and square footages are approximate. This is not intended to solicit property already listed. Nothing herein shall be construed as legal, accounting or other professional advice outside the realm of real estate brokerage.





### 75-22 189TH ST

Fresh Meadows

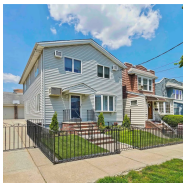
TYPE	TOWNHOUSE	STATUS	CONTRACT	ASK	\$1,288,000	INITIAL	\$1,288,000
SQFT	1,376	PPSF	\$936	BEDS	4	BATHS	3
FEES	\$818	DOM	65				



### 150-21 8TH AVE

Whitestone

TYPE	TOWNHOUSE	STATUS	CONTRACT	ASK	\$1,275,000	INITIAL	\$1,275,000
SQFT	1,950	PPSF	\$654	BEDS	4	BATHS	1.5
FEES	\$760	DOM	98				



### 64-30 72ND ST

Middle Village

TYPE	TOWNHOUSE	STATUS	CONTRACT	ASK	\$1,265,000	INITIAL	\$1,299,000
SQFT	1,094	PPSF	\$1,156	BEDS	3	BATHS	1.5
FEES	\$629	DOM	257				

Compass is a licensed real estate broker and abides by Equal Housing Opportunity laws. All material presented herein is intended for informational purposes only. Information is compiled from sources deemed reliable but is subject to errors, omissions, changes in price, condition, sale, or withdrawal without notice. No statement is made as to the accuracy of any description. All measurements and square footages are approximate. This is not intended to solicit property already listed. Nothing herein shall be construed as legal, accounting or other professional advice outside the realm of real estate brokerage.