

**JAN 02 - 08, 2023**

The Queens luxury real estate market, defined as all properties priced \$1M and above, saw 21 contracts signed this week, made up of 4 condos, and 17 houses. The previous week saw 23 deals. For more information or data, please reach out to a Compass agent.

**\$1,345,299**

Average Asking Price

**\$1,250,000**

Median Asking Price

**\$748**

Average PPSF

**6%**

Average Discount

**\$28,251,275**

Total Volume

**119**

Average Days On Market

Unit PHD at Corte, located at 21-30 44th Drive in Long Island City, entered contract this week, with a last asking price of \$2,575,000. Built in 2019, this penthouse condo unit spans 1,612 square feet with 3 beds and 3 full baths. It features an expansive open layout, floor-to-ceiling windows, high-end appliances, white oak flooring, custom walnut cabinetry, central air, radiant heat porcelain bathroom floors, and much more. The building provides a furnished roof deck, a residents lounge, a 24-hour door attendant, a state-of-the-art fitness center, and many other amenities.

Also signed this week was 67-17 Fleet Street in Forest Hills, with a last asking price of \$1,799,000. Originally built in 1925, this full masonry brick house spans 2,244 square feet with 4 beds and 2 full baths. It features three floors, a fully-finished basement, a private garden, a two-car garage, a private driveway, and much more.

**4**

Condo Deal(s)

**0**

Co-op Deal(s)

**17**

Townhouse Deal(s)

**\$1,543,319**

Average Asking Price

**\$0**

Average Asking Price

**\$1,298,706**

Average Asking Price

**\$1,297,500**

Median Asking Price

**\$0**

Median Asking Price

**\$1,250,000**

Median Asking Price

**\$1,365**

Average PPSF

**N/A**

Average PPSF

**\$639**

Average PPSF

**1,134**

Average SqFt

**N/A**

Average SqFt

**2,095**

Average SqFt



### 21 44TH DR #PHD

<b>Type</b>	Condo	<b>Status</b>	Contract
<b>SqFt</b>	1,612	<b>Beds</b>	3
<b>PPSF</b>	\$1,598	<b>Fees</b>	\$4,331

### Hunters Point

<b>Ask</b>	\$2,575,000
<b>Baths</b>	3
<b>DOM</b>	470



### 69-17 FLEET ST

<b>Type</b>	Townhouse	<b>Status</b>	Contract
<b>SqFt</b>	2,244	<b>Beds</b>	4
<b>PPSF</b>	\$802	<b>Fees</b>	\$1,069

### Forest Hills

<b>Ask</b>	\$1,799,000
<b>Baths</b>	2
<b>DOM</b>	N/A



### 150-14 22ND AVE

<b>Type</b>	Townhouse	<b>Status</b>	Contract
<b>SqFt</b>	2,300	<b>Beds</b>	5
<b>PPSF</b>	\$717	<b>Fees</b>	\$843

### Whitestone

<b>Ask</b>	\$1,650,000
<b>Baths</b>	3
<b>DOM</b>	50

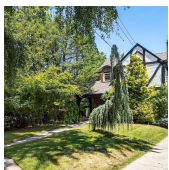


### 149-54 23RD AVE

<b>Type</b>	Townhouse	<b>Status</b>	Contract
<b>SqFt</b>	2,700	<b>Beds</b>	4
<b>PPSF</b>	\$593	<b>Fees</b>	N/A

### Whitestone

<b>Ask</b>	\$1,599,000
<b>Baths</b>	2
<b>DOM</b>	118

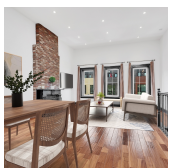


### 85-23 EDGERTON BLVD

<b>Type</b>	Townhouse	<b>Status</b>	Contract
<b>SqFt</b>	2,696	<b>Beds</b>	5
<b>PPSF</b>	\$575	<b>Fees</b>	\$933

### Jamaica Estates

<b>Ask</b>	\$1,549,000
<b>Baths</b>	4
<b>DOM</b>	188



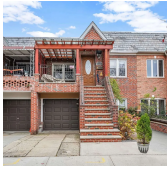
### 21-23 45TH RD #4R

<b>Type</b>	Condo	<b>Status</b>	Contract
<b>SqFt</b>	N/A	<b>Beds</b>	2
<b>PPSF</b>	N/A	<b>Fees</b>	N/A

### Hunters Point

<b>Ask</b>	\$1,545,000
<b>Baths</b>	2
<b>DOM</b>	76

Compass is a licensed real estate broker and abides by Equal Housing Opportunity laws. All material presented herein is intended for informational purposes only. Information is compiled from sources deemed reliable but is subject to errors, omissions, changes in price, condition, sale, or withdrawal without notice. No statement is made as to the accuracy of any description. All measurements and square footages are approximate. This is not intended to solicit property already listed. Nothing herein shall be construed as legal, accounting or other professional advice outside the realm of real estate brokerage.



### 21-34 47TH ST

<b>Type</b>	Townhouse	<b>Status</b>	Contract
<b>Sqft</b>	1,950	<b>Beds</b>	4
<b>PPSF</b>	\$744	<b>Fees</b>	\$703

### Astoria

<b>Ask</b>	\$1,450,000
<b>Baths</b>	2
<b>DOM</b>	47



### 22-25 PARSONS BLVD

<b>Type</b>	Townhouse	<b>Status</b>	Contract
<b>Sqft</b>	1,860	<b>Beds</b>	3
<b>PPSF</b>	\$752	<b>Fees</b>	\$701

### Whitestone

<b>Ask</b>	\$1,398,000
<b>Baths</b>	2.5
<b>DOM</b>	49



### 66-44 JAY AVE

<b>Type</b>	Townhouse	<b>Status</b>	Contract
<b>Sqft</b>	3,201	<b>Beds</b>	10
<b>PPSF</b>	\$422	<b>Fees</b>	\$642

### Maspeth

<b>Ask</b>	\$1,350,000
<b>Baths</b>	4
<b>DOM</b>	89

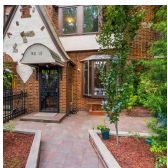


### 21-12 23RD AVE

<b>Type</b>	Townhouse	<b>Status</b>	Contract
<b>Sqft</b>	2,000	<b>Beds</b>	3
<b>PPSF</b>	\$645	<b>Fees</b>	N/A

### Astoria

<b>Ask</b>	\$1,289,000
<b>Baths</b>	1.5
<b>DOM</b>	71



### 93-13 68TH AVE

<b>Type</b>	Townhouse	<b>Status</b>	Contract
<b>Sqft</b>	2,400	<b>Beds</b>	3
<b>PPSF</b>	\$521	<b>Fees</b>	\$776

### Forest Hills

<b>Ask</b>	\$1,250,000
<b>Baths</b>	2.5
<b>DOM</b>	N/A



### 33-11 150TH ST

<b>Type</b>	Townhouse	<b>Status</b>	Contract
<b>Sqft</b>	1,395	<b>Beds</b>	3
<b>PPSF</b>	\$861	<b>Fees</b>	\$668

### Murray Hill

<b>Ask</b>	\$1,200,000
<b>Baths</b>	1.5
<b>DOM</b>	91

Compass is a licensed real estate broker and abides by Equal Housing Opportunity laws. All material presented herein is intended for informational purposes only. Information is compiled from sources deemed reliable but is subject to errors, omissions, changes in price, condition, sale, or withdrawal without notice. No statement is made as to the accuracy of any description. All measurements and square footages are approximate. This is not intended to solicit property already listed. Nothing herein shall be construed as legal, accounting or other professional advice outside the realm of real estate brokerage.



### 40-29 70TH ST

Woodside

Type	Townhouse	Status	Contract
Sqft	1,440	Beds	4
PPSF	\$764	Fees	\$510

Ask	\$1,100,000
Baths	2
DOM	52

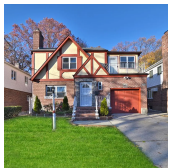


### 108-23 63RD RD

Forest Hills

Type	Townhouse	Status	Contract
Sqft	1,818	Beds	3
PPSF	\$605	Fees	\$764

Ask	\$1,100,000
Baths	2
DOM	61

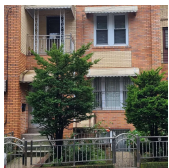


### 220-11 KINGSBURY AVE

Oakland Gardens

Type	Townhouse	Status	Contract
Sqft	1,552	Beds	3
PPSF	\$709	Fees	\$903

Ask	\$1,099,000
Baths	2.5
DOM	29



### 79-44 CALAMUS AVE

Elmhurst

Type	Townhouse	Status	Contract
Sqft	1,480	Beds	3
PPSF	\$709	Fees	\$662

Ask	\$1,095,000
Baths	2.5
DOM	90

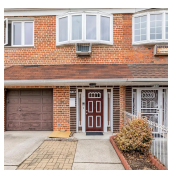


### 41-18 27TH ST #1B

Long Island City

Type	Condo	Status	Contract
Sqft	1,159	Beds	2
PPSF	\$906	Fees	\$1,869

Ask	\$1,050,000
Baths	2
DOM	218



### 171-15 84TH RD

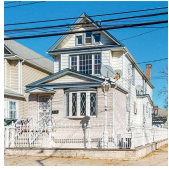
Jamaica Hills

Type	Townhouse	Status	Contract
Sqft	2,194	Beds	4
PPSF	\$479	Fees	\$797

Ask	\$1,050,000
Baths	3.5
DOM	337

Compass is a licensed real estate broker and abides by Equal Housing Opportunity laws. All material presented herein is intended for informational purposes only. Information is compiled from sources deemed reliable but is subject to errors, omissions, changes in price, condition, sale, or withdrawal without notice. No statement is made as to the accuracy of any description. All measurements and square footages are approximate. This is not intended to solicit property already listed. Nothing herein shall be construed as legal, accounting or other professional advice outside the realm of real estate brokerage.





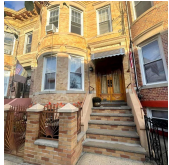
### 90-23 172ND ST

Eastwood

**Type** Townhouse  
**Sqft** 2,100  
**PPSF** \$500

**Status** Contract  
**Beds** 6  
**Fees** \$505

**Ask** \$1,050,000  
**Baths** 3  
**DOM** 51



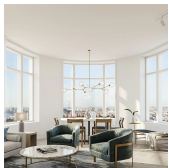
### 75-29 61ST ST

Glendale

**Type** Townhouse  
**Sqft** 2,280  
**PPSF** \$461

**Status** Contract  
**Beds** 5  
**Fees** \$572

**Ask** \$1,050,000  
**Baths** 2  
**DOM** 43



### 41-05 29TH ST #24A

Long Island City

**Type** Condo  
**Sqft** 631  
**PPSF** \$1,590

**Status** Contract  
**Beds** 1  
**Fees** \$1,130

**Ask** \$1,003,275  
**Baths** 1  
**DOM** N/A

Compass is a licensed real estate broker and abides by Equal Housing Opportunity laws. All material presented herein is intended for informational purposes only. Information is compiled from sources deemed reliable but is subject to errors, omissions, changes in price, condition, sale, or withdrawal without notice. No statement is made as to the accuracy of any description. All measurements and square footages are approximate. This is not intended to solicit property already listed. Nothing herein shall be construed as legal, accounting or other professional advice outside the realm of real estate brokerage.