

MAR 14 - 20, 2022

The Long Island City luxury real estate market, defined as all properties priced \$1M and above, saw 23 contracts signed this week, made up of 22 condos, and 1 house. The previous week saw 7 deals. For more information or data, please reach out to a Compass agent.

**\$1,478,741**

Average Asking Price

**\$1,365,000**

Median Asking Price

**\$1,522**

Average PPSF

**0%**

Average Discount

**\$34,011,038**

Total Volume

**114**

Average Days On Market

45-12 11th Street in Hunters Point entered contract this week, with a last asking price of \$3,395,000. This 19.5-foot wide townhouse spans 3,196 square feet with 6 beds and 4 full baths. Following a 3-year renovation, it features a passive air exchange system and solar water heating, a large primary suite with pass-through closet and garden access, a library/office with pine shelving, a kitchen with high-end appliances and two exposures, a dining room with adjacent terrace, a lush private backyard garden, and much more.

Also signed this week was Unit 701 at The View, located at 46-30 Center Boulevard in Hunters Point, with a last asking price of \$2,380,000. Built in 2008, this condo unit spans 1,492 square feet with 3 beds and 3 full baths. It features a private balcony with incredible views, hardwood floors, oversized wall-to-wall windows, central heating and cooling, a kitchen with stone countertops and stainless steel appliances, a primary bedroom with walk-through closets and en-suite bath, and much more. The building provides a 24-hour doorman, on-site parking, a state-of-the-art fitness center, and many other amenities.

**22**

Condo Deal(s)

**0**

Co-op Deal(s)

**1**

Townhouse Deal(s)

**\$1,391,639**

Average Asking Price

**\$0**

Average Asking Price

**\$3,395,000**

Average Asking Price

**\$1,345,000**

Median Asking Price

**\$0**

Median Asking Price

**\$3,395,000**

Median Asking Price

**\$1,543**

Average PPSF

**N/A**

Average PPSF

**\$1,063**

Average PPSF

**922**

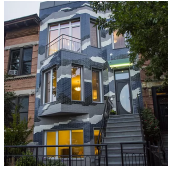
Average SqFt

**N/A**

Average SqFt

**3,196**

Average SqFt



**45-12 11 ST**

Hunters Point

Type	Townhouse	Status	Contract	Ask	\$3,395,000
SqFt	3,196	Beds	6	Baths	4.5
PPSF	\$1,063	Fees	\$1,062	DOM	179



**THE VIEW (46-30 CTR BLVD) #701**

Hunters Point

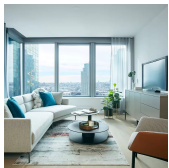
Type	Condo	Status	Contract	Ask	\$2,380,000
SqFt	1,492	Beds	3	Baths	3
PPSF	\$1,596	Fees	\$1,382	DOM	N/A



**SKYLINE TOWER (3 CT SQ) #5510**

Hunters Point

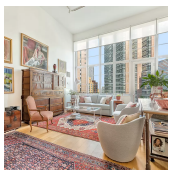
Type	Condo	Status	Contract	Ask	\$1,850,390
SqFt	972	Beds	2	Baths	2
PPSF	\$1,904	Fees	\$1,391	DOM	54



**SKYLINE TOWER (3 CT SQ) #2802**

Hunters Point

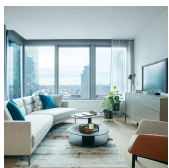
Type	Condo	Status	Contract	Ask	\$1,732,812
SqFt	997	Beds	2	Baths	2
PPSF	\$1,739	Fees	\$1,425	DOM	N/A



**ARRIS LOFTS (27-28 THOMPSON AVE) #702**

Hunters Point

Type	Condo	Status	Contract	Ask	\$1,595,000
SqFt	1,332	Beds	1	Baths	2
PPSF	\$1,198	Fees	\$1,397	DOM	71

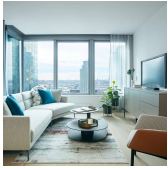


**SKYLINE TOWER (3 CT SQ) #2801**

Hunters Point

Type	Condo	Status	Contract	Ask	\$1,587,834
SqFt	930	Beds	2	Baths	2
PPSF	\$1,708	Fees	\$1,330	DOM	N/A

Compass is a licensed real estate broker and abides by Equal Housing Opportunity laws. All material presented herein is intended for informational purposes only. Information is compiled from sources deemed reliable but is subject to errors, omissions, changes in price, condition, sale, or withdrawal without notice. No statement is made as to the accuracy of any description. All measurements and square footages are approximate. This is not intended to solicit property already listed. Nothing herein shall be construed as legal, accounting or other professional advice outside the realm of real estate brokerage.



**SKYLINE TOWER (3 CT SQ) #2201**

Hunters Point

Type	Condo	Status	Contract	Ask	\$1,548,847
Sqft	930	Beds	2	Baths	2
PPSF	\$1,666	Fees	\$1,330	DOM	N/A



**STAR TOWER (27-17 42 RD) #23A**

Hunters Point

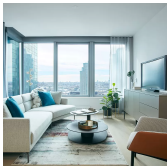
Type	Condo	Status	Contract	Ask	\$1,529,888
Sqft	1,093	Beds	2	Baths	2
PPSF	\$1,400	Fees	\$1,218	DOM	172



**SKYLINE TOWER (3 CT SQ) #2803**

Hunters Point

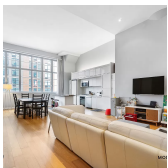
Type	Condo	Status	Contract	Ask	\$1,508,540
Sqft	992	Beds	2	Baths	1
PPSF	\$1,521	Fees	\$1,436	DOM	56



**SKYLINE TOWER (3 CT SQ) #1703**

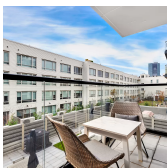
Hunters Point

Type	Condo	Status	Contract	Ask	\$1,392,388
Sqft	992	Beds	2	Baths	2
PPSF	\$1,404	Fees	\$1,436	DOM	N/A



**ARRIS LOFTS (27-28 THOMPSON AVE) #312** Hunters Point

Type	Condo	Status	Contract	Ask	\$1,385,000
Sqft	1,315	Beds	1	Baths	2
PPSF	\$1,054	Fees	\$1,316	DOM	285



**11-30 45 RD #3D**

Hunters Point

Type	Condo	Status	Contract	Ask	\$1,365,000
Sqft	1,041	Beds	2	Baths	2
PPSF	\$1,312	Fees	\$1,610	DOM	1

Compass is a licensed real estate broker and abides by Equal Housing Opportunity laws. All material presented herein is intended for informational purposes only. Information is compiled from sources deemed reliable but is subject to errors, omissions, changes in price, condition, sale, or withdrawal without notice. No statement is made as to the accuracy of any description. All measurements and square footages are approximate. This is not intended to solicit property already listed. Nothing herein shall be construed as legal, accounting or other professional advice outside the realm of real estate brokerage.



**THE INDUSTRY (21-45 44 DR) #3F**

Hunters Point

<b>Type</b>	Condo	<b>Status</b>	Contract	<b>Ask</b>	\$1,325,000
<b>Sqft</b>	1,025	<b>Beds</b>	2	<b>Baths</b>	2
<b>PPSF</b>	\$1,293	<b>Fees</b>	\$1,160	<b>DOM</b>	27



**QNS44 (11-12 44 DR) #2C**

Hunters Point

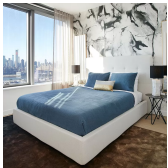
<b>Type</b>	Condo	<b>Status</b>	Contract	<b>Ask</b>	\$1,299,000
<b>Sqft</b>	804	<b>Beds</b>	2	<b>Baths</b>	2
<b>PPSF</b>	\$1,616	<b>Fees</b>	\$1,176	<b>DOM</b>	25



**SKYLINE TOWER (3 CT SQ) #2710**

Hunters Point

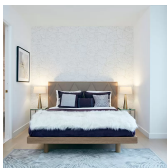
<b>Type</b>	Condo	<b>Status</b>	Contract	<b>Ask</b>	\$1,229,682
<b>Sqft</b>	678	<b>Beds</b>	1	<b>Baths</b>	1
<b>PPSF</b>	\$1,814	<b>Fees</b>	\$969	<b>DOM</b>	54



**SKYLINE TOWER (3 CT SQ) #5503**

Hunters Point

<b>Type</b>	Condo	<b>Status</b>	Contract	<b>Ask</b>	\$1,223,875
<b>Sqft</b>	687	<b>Beds</b>	1	<b>Baths</b>	1
<b>PPSF</b>	\$1,782	<b>Fees</b>	\$983	<b>DOM</b>	N/A



**SKYLINE TOWER (3 CT SQ) #1005**

Hunters Point

<b>Type</b>	Condo	<b>Status</b>	Contract	<b>Ask</b>	\$1,217,192
<b>Sqft</b>	932	<b>Beds</b>	2	<b>Baths</b>	2
<b>PPSF</b>	\$1,306	<b>Fees</b>	\$1,325	<b>DOM</b>	N/A



**SKYLINE TOWER (3 CT SQ) #522**

Hunters Point

<b>Type</b>	Condo	<b>Status</b>	Contract	<b>Ask</b>	\$1,109,945
<b>Sqft</b>	838	<b>Beds</b>	1	<b>Baths</b>	1
<b>PPSF</b>	\$1,325	<b>Fees</b>	\$1,263	<b>DOM</b>	379

Compass is a licensed real estate broker and abides by Equal Housing Opportunity laws. All material presented herein is intended for informational purposes only. Information is compiled from sources deemed reliable but is subject to errors, omissions, changes in price, condition, sale, or withdrawal without notice. No statement is made as to the accuracy of any description. All measurements and square footages are approximate. This is not intended to solicit property already listed. Nothing herein shall be construed as legal, accounting or other professional advice outside the realm of real estate brokerage.



**SKYLINE TOWER (3 CT SQ) # 4405**

Hunters Point

<b>Type</b>	Condo	<b>Status</b>	Contract
<b>Sqft</b>	624	<b>Beds</b>	1
<b>PPSF</b>	\$1,758	<b>Fees</b>	\$892

<b>Ask</b>	\$1,096,784
<b>Baths</b>	1
<b>DOM</b>	N/A

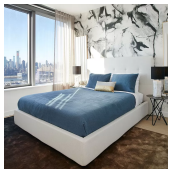


**SKYLINE TOWER (3 CT SQ) # 3107**

Hunters Point

<b>Type</b>	Condo	<b>Status</b>	Contract
<b>Sqft</b>	704	<b>Beds</b>	1
<b>PPSF</b>	\$1,538	<b>Fees</b>	\$1,007

<b>Ask</b>	\$1,082,752
<b>Baths</b>	1
<b>DOM</b>	56



**SKYLINE TOWER (3 CT SQ) # 5104**

Hunters Point

<b>Type</b>	Condo	<b>Status</b>	Contract
<b>Sqft</b>	635	<b>Beds</b>	1
<b>PPSF</b>	\$1,695	<b>Fees</b>	\$925

<b>Ask</b>	\$1,076,036
<b>Baths</b>	1
<b>DOM</b>	N/A

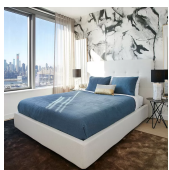


**SKYLINE TOWER (3 CT SQ) # 4504**

Hunters Point

<b>Type</b>	Condo	<b>Status</b>	Contract
<b>Sqft</b>	635	<b>Beds</b>	1
<b>PPSF</b>	\$1,664	<b>Fees</b>	\$925

<b>Ask</b>	\$1,056,224
<b>Baths</b>	1
<b>DOM</b>	N/A



**SKYLINE TOWER (3 CT SQ) # 809**

Hunters Point

<b>Type</b>	Condo	<b>Status</b>	Contract
<b>Sqft</b>	625	<b>Beds</b>	1
<b>PPSF</b>	\$1,639	<b>Fees</b>	\$894

<b>Ask</b>	\$1,023,849
<b>Baths</b>	1
<b>DOM</b>	N/A

Compass is a licensed real estate broker and abides by Equal Housing Opportunity laws. All material presented herein is intended for informational purposes only. Information is compiled from sources deemed reliable but is subject to errors, omissions, changes in price, condition, sale, or withdrawal without notice. No statement is made as to the accuracy of any description. All measurements and square footages are approximate. This is not intended to solicit property already listed. Nothing herein shall be construed as legal, accounting or other professional advice outside the realm of real estate brokerage.