

DEC 13 - 19, 2021

The Long Island City luxury real estate market, defined as all properties priced \$1M and above, saw 9 contracts signed this week, made up of 9 condos. The previous week saw 6 deals. For more information or data, please reach out to a Compass agent.

\$1,414,629 Average Asking Price	\$1,300,549 Median Asking Price	\$1,603 Average PPSF
0% Average Discount	\$12,731,657 Total Volume	88 Average Days On Market

Penthouse 7G at 10-17 Jackson Avenue in Hunters Point entered contract this week, with a last asking price of \$1,995,000. Built in 2010, this penthouse condo spans 1,436 square feet with 2 beds and 2 full baths. It features 1,236 square feet of outdoor space across two terraces and a balcony, double-height ceilings, floor-to-ceiling oversized casement windows, sweeping panoramic views from every room, wood floors throughout, spa-like granite bathrooms, a chef's kitchen with polished white cabinetry and high-end appliances, and much more. The building provides a part-time door attendant, a video intercom system, a fitness center, and more.

Also signed this week was Unit 5502 at Skyline Tower, located at 3 Court Square in Hunters Point, with a last asking price of \$1,945,397. Built in 2019, this condo spans 985 square feet with 2 beds and 2 full baths. It features a northwest exposure, white oak engineered flooring throughout, a modern kitchen with island and abundant cabinet space, high-end appliances, and much more. The building provides a state-of-the-art fitness center, a swimming pool, a spa and steam room, and many other amenities.

9 Condo Deal(s)	0 Co-op Deal(s)	0 Townhouse Deal(s)
\$1,414,629 Average Asking Price	\$0 Average Asking Price	\$0 Average Asking Price
\$1,300,549 Median Asking Price	\$0 Median Asking Price	\$0 Median Asking Price
\$1,603 Average PPSF	N/A Average PPSF	\$0 Average PPSF
905 Average SqFt	N/A Average SqFt	0 Average SqFt



10-17 JACKSON AVE #PH7G

Hunters Point

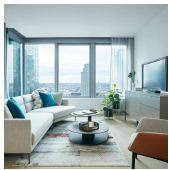
Type	Condo	Status	Contract	Ask	\$1,995,000
SqFt	1,440	Beds	2	Baths	2.5
PPSF	\$1,386	Fees	\$1,923	DOM	33



SKYLINE TOWER (3 CT SQ) #5502

Hunters Point

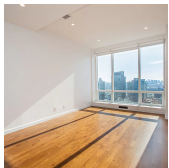
Type	Condo	Status	Contract	Ask	\$1,945,397
SqFt	985	Beds	2	Baths	2
PPSF	\$1,976	Fees	\$1,409	DOM	N/A



SKYLINE TOWER (3 CT SQ) #2808

Hunters Point

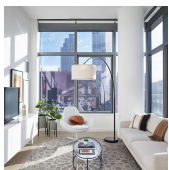
Type	Condo	Status	Contract	Ask	\$1,597,914
SqFt	978	Beds	2	Baths	2
PPSF	\$1,634	Fees	\$1,422	DOM	N/A



STAR TOWER (27-17 42 RD) #6A

Hunters Point

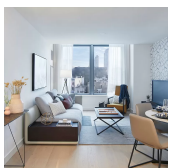
Type	Condo	Status	Contract	Ask	\$1,319,888
SqFt	1,093	Beds	2	Baths	2
PPSF	\$1,208	Fees	\$1,219	DOM	186



SKYLINE TOWER (3 CT SQ) #308

Hunters Point

Type	Condo	Status	Contract	Ask	\$1,300,549
SqFt	994	Beds	2	Baths	2
PPSF	\$1,309	Fees	\$1,421	DOM	N/A



SKYLINE TOWER (3 CT SQ) #3210

Hunters Point

Type	Condo	Status	Contract	Ask	\$1,249,998
SqFt	678	Beds	1	Baths	1
PPSF	\$1,844	Fees	\$969	DOM	N/A

Compass is a licensed real estate broker and abides by Equal Housing Opportunity laws. All material presented herein is intended for informational purposes only. Information is compiled from sources deemed reliable but is subject to errors, omissions, changes in price, condition, sale, or withdrawal without notice. No statement is made as to the accuracy of any description. All measurements and square footages are approximate. This is not intended to solicit property already listed. Nothing herein shall be construed as legal, accounting or other professional advice outside the realm of real estate brokerage.



STAR TOWER (27-17 42 RD) #PH3B

Hunters Point

Type	Condo	Status	Contract
Sqft	713	Beds	1
PPSF	\$1,650	Fees	\$557

Ask	\$1,176,450
Baths	1
DOM	44

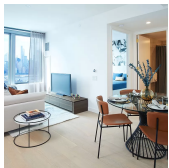


SKYLINE TOWER (3 CT SQ) #4305

Hunters Point

Type	Condo	Status	Contract
Sqft	624	Beds	1
PPSF	\$1,753	Fees	\$892

Ask	\$1,093,539
Baths	1
DOM	N/A



SKYLINE TOWER (3 CT SQ) #4404

Hunters Point

Type	Condo	Status	Contract
Sqft	635	Beds	1
PPSF	\$1,659	Fees	\$925

Ask	\$1,052,922
Baths	1
DOM	N/A

Compass is a licensed real estate broker and abides by Equal Housing Opportunity laws. All material presented herein is intended for informational purposes only. Information is compiled from sources deemed reliable but is subject to errors, omissions, changes in price, condition, sale, or withdrawal without notice. No statement is made as to the accuracy of any description. All measurements and square footages are approximate. This is not intended to solicit property already listed. Nothing herein shall be construed as legal, accounting or other professional advice outside the realm of real estate brokerage.