

APRIL 26 - MAY 2, 2021

The Long Island City luxury real estate market, defined as all properties \$1M and above, saw 8 contracts signed this week, made up of 8 condos. The previous week saw 17 deals.

| | | |
|----------------------|---------------------|------------------------|
| \$1,335,785 | \$1,385,000 | \$1,381 |
| Average Asking Price | Median Asking Price | Average PPSF |
| 0% | \$10,686,278 | 216 |
| Average Discount | Total Volume | Average Days On Market |

Unit 529 at Skyline Tower, located at 3 Court Square in Hunters Point, entered contract this week, with a last asking price of \$1,498,331. Built in 2019, this brand new condo spans 987 square feet with 2 beds and 2 baths. It features engineered white oak floors, wall-to-wall floor-to-ceiling windows, chic fixtures and finishes, an in-unit washer & dryer, south-facing light, and much more. The building offers a full-time doorman and concierge, lounges, a fitness center with pool, outdoor terrace, pet spa, children's playroom, and optional valet parking.

Also signed this week was Unit 1108 at Skyline Tower, located at 3 Court Square in Hunters Point, with a last asking price of \$1,465,627. This unit spans 978 square feet with 2 beds and 2 baths. In addition to details mentioned for the unit above, other features include a wall of closets in the primary suite, custom kitchen cabinetry with sand ash veneer and matte laminate, a quartz slab countertop & backsplash. The primary suite also offers a spa-inspired bathroom with porcelain tile and a white quartz vanity.

| | | |
|----------------------|----------------------|----------------------|
| 8 | 0 | 0 |
| Condo Deal(s) | Co-op Deal(s) | Townhouse Deal(s) |
| \$1,335,785 | \$0 | \$0 |
| Average Asking Price | Average Asking Price | Average Asking Price |
| \$1,385,000 | \$0 | \$0 |
| Median Asking Price | Median Asking Price | Median Asking Price |
| \$1,381 | N/A | \$0 |
| Average PPSF | Average PPSF | Average PPSF |
| 981 | N/A | 0 |
| Average SqFt | Average SqFt | Average SqFt |

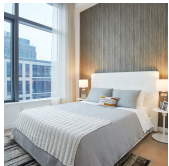


SKYLINE TOWER (3 CT SQ) # 529

Hunters Point

| | | | |
|-------------|---------|---------------|----------|
| Type | Condo | Status | Contract |
| SqFt | 987 | Beds | 2 |
| PPSF | \$1,519 | Fees | \$2,127 |

| | |
|--------------|-------------|
| Ask | \$1,498,331 |
| Baths | 2 |
| DOM | 45 |

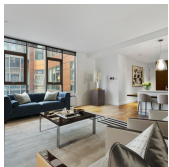


SKYLINE TOWER (3 CT SQ) # 1108

Hunters Point

| | | | |
|-------------|---------|---------------|----------|
| Type | Condo | Status | Contract |
| SqFt | 978 | Beds | 2 |
| PPSF | \$1,499 | Fees | \$1,895 |

| | |
|--------------|-------------|
| Ask | \$1,465,627 |
| Baths | 2 |
| DOM | 38 |

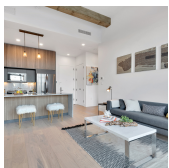


THE POWERHOUSE (2-17 51 AVE) # 401

Hunters Point

| | | | |
|-------------|---------|---------------|----------|
| Type | Condo | Status | Contract |
| SqFt | 1,333 | Beds | 2 |
| PPSF | \$1,088 | Fees | \$1,167 |

| | |
|--------------|-------------|
| Ask | \$1,450,000 |
| Baths | 2 |
| DOM | 304 |

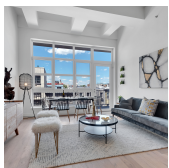


THE ZIPPER (5-33 48 AVE) # 3F

Hunters Point

| | | | |
|-------------|---------|---------------|----------|
| Type | Condo | Status | Contract |
| SqFt | 1,058 | Beds | 2 |
| PPSF | \$1,332 | Fees | \$2,000 |

| | |
|--------------|-------------|
| Ask | \$1,410,000 |
| Baths | 2 |
| DOM | 1 |

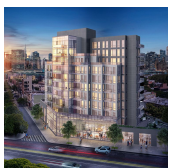


THE ZIPPER (5-33 48 AVE) # 4D

Hunters Point

| | | | |
|-------------|---------|---------------|----------|
| Type | Condo | Status | Contract |
| SqFt | 1,011 | Beds | 2 |
| PPSF | \$1,346 | Fees | \$1,911 |

| | |
|--------------|-------------|
| Ask | \$1,360,000 |
| Baths | 2 |
| DOM | 609 |



PRIME LIC (22-43 JACKSON AVE) # 5B

Hunters Point

| | | | |
|-------------|---------|---------------|----------|
| Type | Condo | Status | Contract |
| SqFt | 944 | Beds | 2 |
| PPSF | \$1,388 | Fees | \$1,269 |

| | |
|--------------|-------------|
| Ask | \$1,310,000 |
| Baths | 2 |
| DOM | N/A |

Compass is a licensed real estate broker and abides by Equal Housing Opportunity laws. All material presented herein is intended for informational purposes only. Information is compiled from sources deemed reliable but is subject to errors, omissions, changes in price, condition, sale, or withdrawal without notice. No statement is made as to the accuracy of any description. All measurements and square footages are approximate. This is not intended to solicit property already listed. Nothing herein shall be construed as legal, accounting or other professional advice outside the realm of real estate brokerage.



PRIME LIC (22-43 JACKSON AVE) #10F

Hunters Point

| | | | | | |
|-------------|---------|---------------|----------|--------------|-------------|
| Type | Condo | Status | Contract | Ask | \$1,135,000 |
| Sqft | 818 | Beds | 2 | Baths | 2 |
| PPSF | \$1,388 | Fees | \$1,113 | DOM | 43 |



STAR TOWER LIC (27-17 42 RD) #20D

Hunters Point

| | | | | | |
|-------------|---------|---------------|----------|--------------|-------------|
| Type | Condo | Status | Contract | Ask | \$1,057,320 |
| Sqft | 712 | Beds | 1 | Baths | 1 |
| PPSF | \$1,485 | Fees | \$557 | DOM | 470 |

Compass is a licensed real estate broker and abides by Equal Housing Opportunity laws. All material presented herein is intended for informational purposes only. Information is compiled from sources deemed reliable but is subject to errors, omissions, changes in price, condition, sale, or withdrawal without notice. No statement is made as to the accuracy of any description. All measurements and square footages are approximate. This is not intended to solicit property already listed. Nothing herein shall be construed as legal, accounting or other professional advice outside the realm of real estate brokerage.

© 2020 Compass. This report and information provided in this report are proprietary to Compass and may not be sold, used or reprinted, in whole or in part, without the prior written consent in each instance of Compass. Data is subject to revision. Sourced from Compass proprietary database. All rights reserved.

compass.com