



COMPASS

Manhattan Luxury Report

Jan 05 - 11, 2025, Residential Contracts \$5M+

Photo: [9 Jay Street](#)

The Manhattan luxury real estate market, defined as all properties priced \$5M and above, saw 10 contracts signed this week, made up of 9 condos, and 1 co-op. The previous week saw 9 deals. For more information or data, please reach out to a Compass agent.

\$8,775,400

Average Asking Price

\$7,650,000

Median Asking Price

\$2,989

Average PPSF

2%

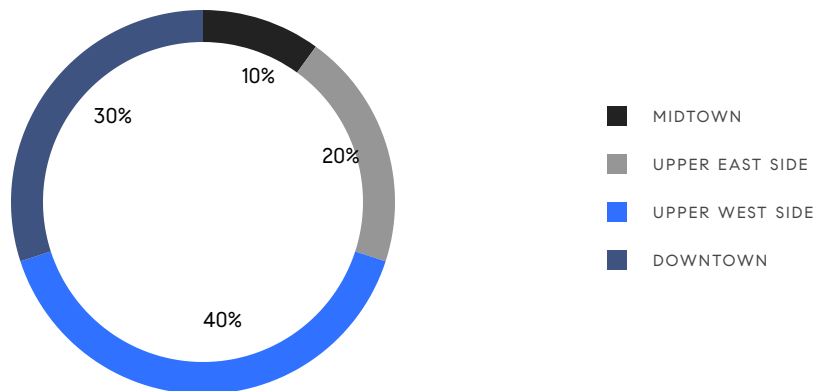
Average Discount

\$87,754,000

Total Volume

176

Average Days On Market

**9**

Condo Deal(s)

1

Co-op Deal(s)

0

Townhouse Deal(s)

\$8,806,000

Average Asking Price

\$8,500,000

Average Asking Price

\$0

Average Asking Price

\$6,800,000

Median Asking Price

\$8,500,000

Median Asking Price

\$0

Median Asking Price

\$2,989

Average PPSF

N/A

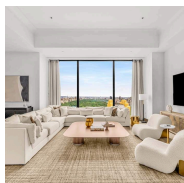
Average PPSF

2,939

Average SqFt

N/A

Average SqFt

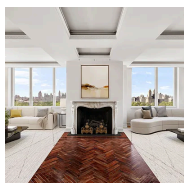


111 West 57th Street, Unit 36

Midtown

Contract Signed

Type	Condo	Price	\$18,250,000	Sq. Ft.	4,492	Beds	3
DOM	113	Initial	\$18,250,000	PPSF	\$4,063	Baths	4

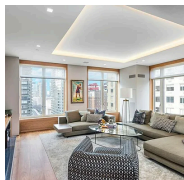


1049 5th Avenue, Unit PH20

Upper East Side

Contract Signed

Type	Condo	Price	\$11,600,000	Sq. Ft.	4,661	Beds	5
DOM	233	Initial	\$11,950,000	PPSF	\$2,489	Baths	5.5

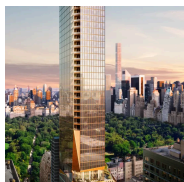


15 Central Park West, Unit 15K

Upper West Side

Contract Signed

Type	Condo	Price	\$10,950,000	Sq. Ft.	2,515	Beds	2
DOM	113	Initial	\$10,950,000	PPSF	\$4,354	Baths	2



50 West 66th Street, Unit 10C

Upper West Side

Contract Signed

Type	Condo	Price	\$8,965,000	Sq. Ft.	3,223	Beds	4
DOM	250	Initial	\$8,965,000	PPSF	\$2,782	Baths	4

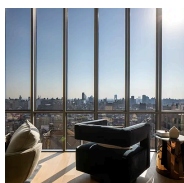


6 West 77th Street, Unit 16E

Upper West Side

Contract Signed

Type	Coop	Price	\$8,500,000	Sq. Ft.	-	Beds	3
DOM	124	Initial	\$8,995,000	PPSF	-	Baths	2



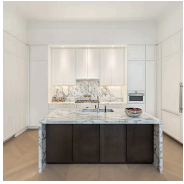
565 Broome Street, Unit N27B

Soho

Contract Signed

Type	Condo	Price	\$6,800,000	Sq. Ft.	2,191	Beds	2
DOM	322	Initial	\$7,465,000	PPSF	\$3,104	Baths	2.5

Compass is a licensed real estate broker and abides by Equal Housing Opportunity laws. All material presented herein is intended for informational purposes only. Information is compiled from sources deemed reliable but is subject to errors, omissions, changes in price, condition, sale, or withdrawal without notice. No statement is made as to the accuracy of any description. All measurements and square footages are approximate. This is not intended to solicit property already listed. Nothing herein shall be construed as legal, accounting or other professional advice outside the realm of real estate brokerage.

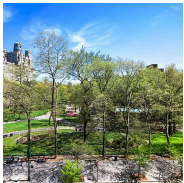


108 Leonard Street, Unit 12K

Tribeca

Contract Signed

Type	Condo	Price	\$5,795,000	Sq. Ft.	2,635	Beds	3
DOM	125	Initial	\$5,795,000	PPSF	\$2,200	Baths	3

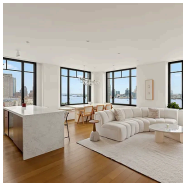


100 West 80th Street, Unit 6B

Upper West Side

Contract Signed

Type	Condo	Price	\$5,749,000	Sq. Ft.	2,681	Beds	4
DOM	158	Initial	\$5,950,000	PPSF	\$2,145	Baths	3.5



110 Charlton Street, Unit 27A

Soho

Contract Signed

Type	Condo	Price	\$5,650,000	Sq. Ft.	1,617	Beds	2
DOM	140	Initial	\$5,750,000	PPSF	\$3,495	Baths	2.5



400 East 84th Street, Unit PH1C

Upper East Side

Contract Signed

Type	Condop	Price	\$5,495,000	Sq. Ft.	2,429	Beds	4
DOM	-	Initial	\$5,495,000	PPSF	\$2,263	Baths	3.5

Compass is a licensed real estate broker and abides by Equal Housing Opportunity laws. All material presented herein is intended for informational purposes only. Information is compiled from sources deemed reliable but is subject to errors, omissions, changes in price, condition, sale, or withdrawal without notice. No statement is made as to the accuracy of any description. All measurements and square footages are approximate. This is not intended to solicit property already listed. Nothing herein shall be construed as legal, accounting or other professional advice outside the realm of real estate brokerage.