



COMPASS

Manhattan Luxury Report

Dec 15 - 21, 2025, Residential Contracts \$5M+

Photo: [1355 First Avenue, Unit PH2](#)

The Manhattan luxury real estate market, defined as all properties priced \$5M and above, saw 11 contracts signed this week, made up of 8 condos, 2 co-ops, and 1 house. The previous week saw 24 deals.

For more information or data, please reach out to a Compass agent.

\$7,519,636

Average Asking Price

\$7,500,000

Median Asking Price

\$2,340

Average PPSF

0%

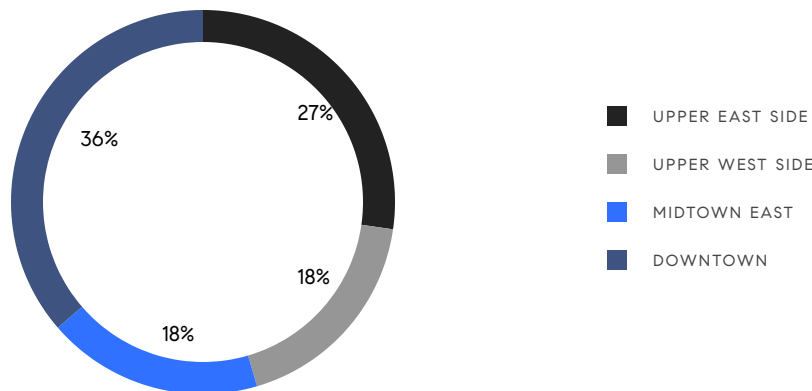
Average Discount

\$82,715,990

Total Volume

221

Average Days On Market

**8**

Condo Deal(s)

2

Co-op Deal(s)

1

Townhouse Deal(s)

\$7,840,124

Average Asking Price

\$6,622,500

Average Asking Price

\$6,750,000

Average Asking Price

\$7,800,000

Median Asking Price

\$6,622,500

Median Asking Price

\$6,750,000

Median Asking Price

\$2,552

Average PPSF

\$1,185

Average PPSF

3,215

Average SqFt

5,700

Average SqFt

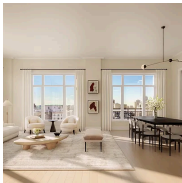


40 East End Avenue, Unit TH

Upper East Side

Contract Signed

Type	Condo	Price	\$9,675,990	Sq. Ft.	4,888	Beds	4
DOM	92	Initial	\$9,675,990	PPSF	\$1,980	Baths	3



211 West 84th Street, Unit 8D

Upper West Side

Contract Signed

Type	Condo	Price	\$9,650,000	Sq. Ft.	2,642	Beds	4
DOM	398	Initial	\$9,550,000	PPSF	\$3,653	Baths	4

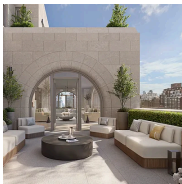


15 East 82nd Street, Unit 1

Upper East Side

Contract Signed

Type	Condo	Price	\$9,300,000	Sq. Ft.	5,000	Beds	5
DOM	455	Initial	\$9,300,000	PPSF	\$1,860	Baths	6



255 East 77th Street, Unit 9B

Upper East Side

Contract Signed

Type	Condo	Price	\$8,000,000	Sq. Ft.	2,916	Beds	4
DOM	64	Initial	\$8,000,000	PPSF	\$2,744	Baths	4.5

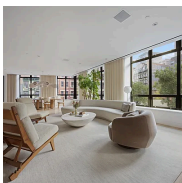


20 West 53rd Street, Unit 37A

Midtown

Contract Signed

Type	Condo	Price	\$7,600,000	Sq. Ft.	2,525	Beds	3
DOM	496	Initial	\$7,600,000	PPSF	\$3,010	Baths	3.5



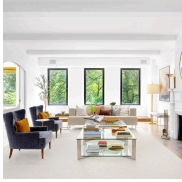
1 North Moore Street, Unit 3

Tribeca

Contract Signed

Type	Condo	Price	\$7,500,000	Sq. Ft.	2,835	Beds	4
DOM	-	Initial	\$7,500,000	PPSF	\$2,646	Baths	4

Compass is a licensed real estate broker and abides by Equal Housing Opportunity laws. All material presented herein is intended for informational purposes only. Information is compiled from sources deemed reliable but is subject to errors, omissions, changes in price, condition, sale, or withdrawal without notice. No statement is made as to the accuracy of any description. All measurements and square footages are approximate. This is not intended to solicit property already listed. Nothing herein shall be construed as legal, accounting or other professional advice outside the realm of real estate brokerage.



101 Central Park West, Unit 2DE

Upper West Side

Contract Signed

Type	Coop	Price	\$7,495,000	Sq. Ft.	-	Beds	4
DOM	154	Initial	\$7,995,000	PPSF	-	Baths	5

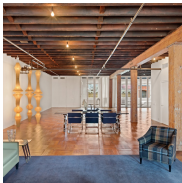


129 East 35th Street

Murray Hill

Contract Signed

Type	Townhouse	Price	\$6,750,000	Sq. Ft.	5,700	Beds	7
DOM	197	Initial	\$6,750,000	PPSF	\$1,185	Baths	4

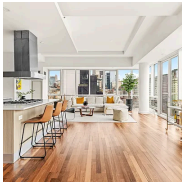


41 Greene Street, Unit 5

Soho

Contract Signed

Type	Coop	Price	\$5,750,000	Sq. Ft.	3,200	Beds	1
DOM	58	Initial	\$5,750,000	PPSF	\$1,797	Baths	2

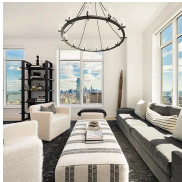


8 Union Square South, Unit PH2

Greenwich Village

Contract Signed

Type	Condo	Price	\$5,500,000	Sq. Ft.	2,700	Beds	3
DOM	96	Initial	\$5,500,000	PPSF	\$2,038	Baths	3.5



30 Park Place, Unit 60B

Tribeca

Contract Signed

Type	Condo	Price	\$5,495,000	Sq. Ft.	2,213	Beds	3
DOM	200	Initial	\$5,495,000	PPSF	\$2,485	Baths	3.5

Compass is a licensed real estate broker and abides by Equal Housing Opportunity laws. All material presented herein is intended for informational purposes only. Information is compiled from sources deemed reliable but is subject to errors, omissions, changes in price, condition, sale, or withdrawal without notice. No statement is made as to the accuracy of any description. All measurements and square footages are approximate. This is not intended to solicit property already listed. Nothing herein shall be construed as legal, accounting or other professional advice outside the realm of real estate brokerage.