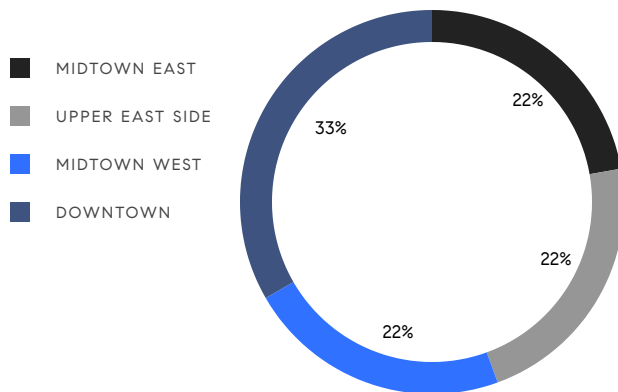


# MANHATTAN WEEKLY LUXURY REPORT



20 WEST 53RD STREET, UNIT 42A

RESIDENTIAL CONTRACTS  
\$5 MILLION AND UP



9

CONTRACTS SIGNED  
THIS WEEK

\$115,340,000

TOTAL CONTRACT VOLUME

The Manhattan luxury real estate market, defined as all properties priced \$5M and above, saw 9 contracts signed this week, made up of 6 condos, and 3 co-ops. The previous week saw 13 deals. For more information or data, please reach out to a Compass agent.

**\$12,815,556**

AVERAGE ASKING PRICE

**\$8,995,000**

MEDIAN ASKING PRICE

**\$3,841**

AVERAGE PPSF

**6%**

AVERAGE DISCOUNT

**\$115,340,000**

TOTAL VOLUME

**326**

AVERAGE DAYS ON MARKET

Unit 39A at 220 Central Park South in Midtown entered contract this week, with a last asking price of \$34,500,000. Built in 2015, this condo spans 3,114 square feet with 3 beds and 3 full baths. It features expansive park, water, and city views, a semi-private landing and elegant entry foyer, a living/dining area with floor-to-ceiling windows, a primary bedroom with walk-in dressing room and en-suite bath, abundant storage, an open kitchen with high-end appliances, and much more. The building provides 24-hour attended lobbies, an athletic club and spa with saltwater pool, a residents' club, parking, and many other amenities.

Also signed this week was Unit 8 at 944 5th Avenue on the Upper East Side, with a last asking price of \$22,000,000. Originally built in 1925, this full-floor co-op offers 4 beds and 4 full baths. It features park views, abundant natural lighting, a large living room and dining room, a library, and much more. The building provides an on-site gym, a full-time doorman and elevator attendant, and many other amenities.

**6**

CONDO DEAL(S)

**3**

CO-OP DEAL(S)

**0**

TOWNHOUSE DEAL(S)

**\$13,556,667**

AVERAGE ASKING PRICE

**\$11,333,334**

AVERAGE ASKING PRICE

**\$0**

AVERAGE ASKING PRICE

**\$9,647,500**

MEDIAN ASKING PRICE

**\$6,500,000**

MEDIAN ASKING PRICE

**\$0**

MEDIAN ASKING PRICE

**\$4,252**

AVERAGE PPSF

**N/A**

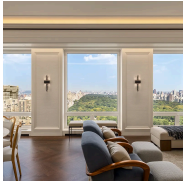
AVERAGE PPSF

**3,240**

AVERAGE SQFT

**N/A**

AVERAGE SQFT



### 220 CENTRAL PARK SOUTH #39A

Midtown

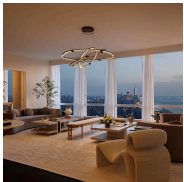
TYPE	CONDO	STATUS	CONTRACT	ASK	\$34,500,000	INITIAL	\$34,500,000
SQFT	3,114	PPSF	\$11,079	BEDS	3	BATHS	3.5
FEES	\$20,766	DOM	619				



### 944 5TH AVE #8

Lenox Hill

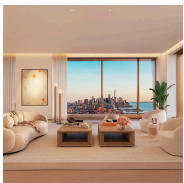
TYPE	COOP	STATUS	CONTRACT	ASK	\$22,000,000	INITIAL	\$25,500,000
SQFT	N/A	PPSF	N/A	BEDS	4	BATHS	4
FEES	N/A	DOM	114				



### 35 HUDSON YARDS #8801

Hudson Yards

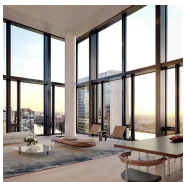
TYPE	CONDO	STATUS	CONTRACT	ASK	\$15,050,000	INITIAL	\$16,995,000
SQFT	4,621	PPSF	\$3,257	BEDS	5	BATHS	5.5
FEES	\$18,681	DOM	391				



### 500 WEST 18TH ST #W20A

West Chelsea

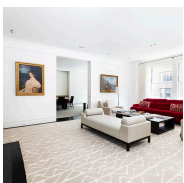
TYPE	CONDO	STATUS	CONTRACT	ASK	\$10,300,000	INITIAL	\$10,300,000
SQFT	2,497	PPSF	\$4,125	BEDS	3	BATHS	3.5
FEES	\$8,967	DOM	112				



### 695 1ST AVE #PHK

Murray Hill

TYPE	CONDO	STATUS	CONTRACT	ASK	\$8,995,000	INITIAL	\$8,995,000
SQFT	3,831	PPSF	\$2,348	BEDS	4	BATHS	4.5
FEES	\$12,793	DOM	289				

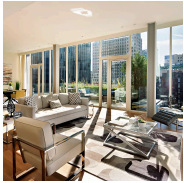


### 876 PARK AVE #7N

Upper East Side

TYPE	COOP	STATUS	CONTRACT	ASK	\$6,500,000	INITIAL	\$6,200,000
SQFT	N/A	PPSF	N/A	BEDS	4	BATHS	3
FEES	\$5,233	DOM	822				

Compass is a licensed real estate broker and abides by Equal Housing Opportunity laws. All material presented herein is intended for informational purposes only. Information is compiled from sources deemed reliable but is subject to errors, omissions, changes in price, condition, sale, or withdrawal without notice. No statement is made as to the accuracy of any description. All measurements and square footages are approximate. This is not intended to solicit property already listed. Nothing herein shall be construed as legal, accounting or other professional advice outside the realm of real estate brokerage.



### 93 WORTH ST #PH3

Tribeca

TYPE	CONDO	STATUS	CONTRACT	ASK	\$6,500,000	INITIAL	\$6,995,000
SQFT	3,011	PPSF	\$2,159	BEDS	3	BATHS	3.5
FEES	\$7,452	DOM	286				



### 15 HUDSON YARDS #77A

Hudson Yards

TYPE	CONDO	STATUS	CONTRACT	ASK	\$5,995,000	INITIAL	\$8,950,000
SQFT	2,362	PPSF	\$2,539	BEDS	3	BATHS	3.5
FEES	\$7,162	DOM	234				



### 110 MERCER ST #2W

Soho

TYPE	COOP	STATUS	CONTRACT	ASK	\$5,500,000	INITIAL	\$5,500,000
SQFT	4,000	PPSF	\$1,375	BEDS	3	BATHS	2
FEES	N/A	DOM	64				

Compass is a licensed real estate broker and abides by Equal Housing Opportunity laws. All material presented herein is intended for informational purposes only. Information is compiled from sources deemed reliable but is subject to errors, omissions, changes in price, condition, sale, or withdrawal without notice. No statement is made as to the accuracy of any description. All measurements and square footages are approximate. This is not intended to solicit property already listed. Nothing herein shall be construed as legal, accounting or other professional advice outside the realm of real estate brokerage.