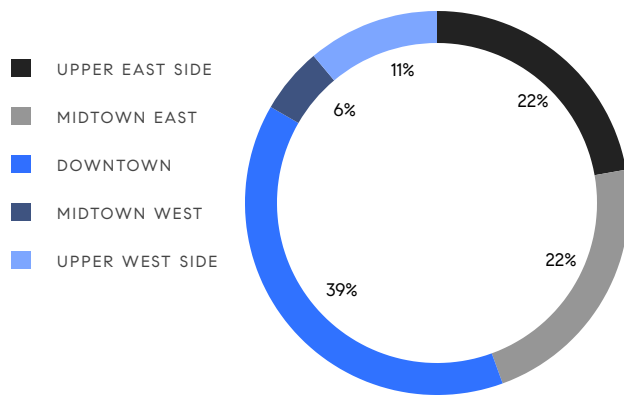


MANHATTAN WEEKLY LUXURY REPORT



20 BANK STREET

RESIDENTIAL CONTRACTS
\$5 MILLION AND UP



18
CONTRACTS SIGNED
THIS WEEK

\$124,740,000
TOTAL CONTRACT VOLUME

The Manhattan luxury real estate market, defined as all properties priced \$5M and above, saw 18 contracts signed this week, made up of 12 condos, and 6 co-ops. The previous week saw 21 deals. For more information or data, please reach out to a Compass agent.

\$6,930,000

AVERAGE ASKING PRICE

\$6,525,000

MEDIAN ASKING PRICE

\$2,443

AVERAGE PPSF

4%

AVERAGE DISCOUNT

\$124,740,000

TOTAL VOLUME

212

AVERAGE DAYS ON MARKET

Unit 8 at 1125 5th Avenue on the Upper East Side entered contract this week, with a last asking price of \$9,995,000. Originally built in 1925, this co-op offers 5 beds and 5 full baths. It features skyline views, a 25-foot-long gallery, high ceilings, herringbone floors, abundant natural light, a large living room with fireplace, a windowed kitchen with butler's pantry and laundry area, en-suite baths with all bedrooms and closet space, and much more. The building provides a fitness center, private basement storage, and many other amenities.

Also signed this week was Unit 52A at 100 East 53rd Street in Midtown East, with a last asking price of \$9,300,000. Built in 2017, this condo unit spans 3,385 square feet with 3 beds and 3 full baths. It features a grand entrance gallery, an open chef's kitchen with brushed oak cabinetry, floor-to-ceiling windows, a primary bedroom with double exposures, dressing area, and en-suite windowed bath, and much more. The building provides a swimming pool and garden, a spa, a fitness center and yoga rooms, a billiards lounge, a high-end restaurant, and many other amenities.

12

CONDO DEAL(S)

6

CO-OP DEAL(S)

0

TOWNHOUSE DEAL(S)

\$7,183,334

AVERAGE ASKING PRICE

\$6,423,334

AVERAGE ASKING PRICE

\$0

AVERAGE ASKING PRICE

\$7,010,000

MEDIAN ASKING PRICE

\$5,750,000

MEDIAN ASKING PRICE

\$0

MEDIAN ASKING PRICE

\$2,559

AVERAGE PPSF

N/A

AVERAGE PPSF

2,865

AVERAGE SQFT

N/A

AVERAGE SQFT



1125 5TH AVE #8

Upper East Side

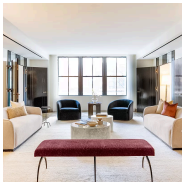
TYPE	COOP	STATUS	CONTRACT	ASK	\$9,995,000	INITIAL	\$13,500,000
SQFT	N/A	PPSF	N/A	BEDS	5	BATHS	5.5
FEES	N/A	DOM	335				



100 EAST 53RD ST #52A

Midtown

TYPE	CONDO	STATUS	CONTRACT	ASK	\$9,300,000	INITIAL	\$9,300,000
SQFT	3,385	PPSF	\$2,748	BEDS	3	BATHS	3.5
FEES	\$13,199	DOM	7				



111 WEST 57TH ST #12N

Midtown

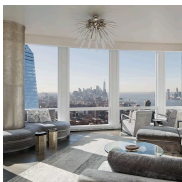
TYPE	CONDO	STATUS	CONTRACT	ASK	\$9,250,000	INITIAL	\$9,250,000
SQFT	3,535	PPSF	\$2,617	BEDS	3	BATHS	3
FEES	\$15,595	DOM	21				



500 WEST 18TH ST #E19B

West Chelsea

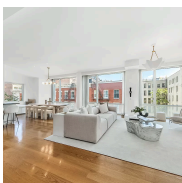
TYPE	CONDO	STATUS	CONTRACT	ASK	\$8,190,000	INITIAL	\$8,190,000
SQFT	2,668	PPSF	\$3,070	BEDS	3	BATHS	3.5
FEES	\$9,493	DOM	N/A				



35 HUDSON YARDS #6804

Hudson Yards

TYPE	CONDO	STATUS	CONTRACT	ASK	\$7,995,000	INITIAL	\$9,975,000
SQFT	3,099	PPSF	\$2,580	BEDS	3	BATHS	3.5
FEES	\$10,334	DOM	909				



311 WEST BROADWAY #5EJ

Soho

TYPE	CONDO	STATUS	CONTRACT	ASK	\$7,995,000	INITIAL	\$7,995,000
SQFT	3,914	PPSF	\$2,043	BEDS	5	BATHS	4.5
FEES	\$11,843	DOM	215				

Compass is a licensed real estate broker and abides by Equal Housing Opportunity laws. All material presented herein is intended for informational purposes only. Information is compiled from sources deemed reliable but is subject to errors, omissions, changes in price, condition, sale, or withdrawal without notice. No statement is made as to the accuracy of any description. All measurements and square footages are approximate. This is not intended to solicit property already listed. Nothing herein shall be construed as legal, accounting or other professional advice outside the realm of real estate brokerage.



50 WEST 66TH ST #16B

Upper West Side

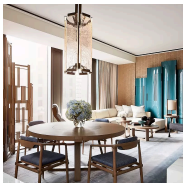
TYPE	CONDO	STATUS	CONTRACT	ASK	\$7,025,000	INITIAL	\$7,025,000
SQFT	2,424	PPSF	\$2,899	BEDS	3	BATHS	3
FEES	N/A	DOM	N/A				



111 WEST 57TH ST #12S

Midtown

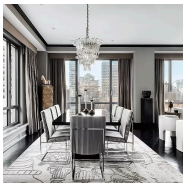
TYPE	CONDO	STATUS	CONTRACT	ASK	\$6,995,000	INITIAL	\$6,995,000
SQFT	3,601	PPSF	\$1,943	BEDS	3	BATHS	4.5
FEES	\$15,609	DOM	N/A				



53 WEST 53RD ST #38B

Midtown

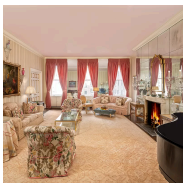
TYPE	CONDO	STATUS	CONTRACT	ASK	\$6,550,000	INITIAL	\$6,550,000
SQFT	2,033	PPSF	\$3,222	BEDS	2	BATHS	2
FEES	\$8,455	DOM	N/A				



50 MADISON AVE #RU7

Nomad

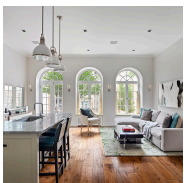
TYPE	CONDO	STATUS	CONTRACT	ASK	\$6,500,000	INITIAL	\$6,500,000
SQFT	2,646	PPSF	\$2,457	BEDS	3	BATHS	3.5
FEES	\$8,605	DOM	N/A				



812 PARK AVE #9/10C

Upper East Side

TYPE	COOP	STATUS	CONTRACT	ASK	\$6,500,000	INITIAL	\$9,250,000
SQFT	N/A	PPSF	N/A	BEDS	4	BATHS	4.5
FEES	N/A	DOM	472				



14 WEST 11TH ST #GARDEN

Greenwich Village

TYPE	COOP	STATUS	CONTRACT	ASK	\$6,000,000	INITIAL	\$6,000,000
SQFT	N/A	PPSF	N/A	BEDS	3	BATHS	3.5
FEES	N/A	DOM	42				

Compass is a licensed real estate broker and abides by Equal Housing Opportunity laws. All material presented herein is intended for informational purposes only. Information is compiled from sources deemed reliable but is subject to errors, omissions, changes in price, condition, sale, or withdrawal without notice. No statement is made as to the accuracy of any description. All measurements and square footages are approximate. This is not intended to solicit property already listed. Nothing herein shall be construed as legal, accounting or other professional advice outside the realm of real estate brokerage.



345 WEST 14TH ST #PHD

Chelsea

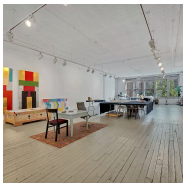
TYPE	CONDO	STATUS	CONTRACT	ASK	\$5,750,000	INITIAL	\$5,750,000
SQFT	2,093	PPSF	\$2,748	BEDS	3	BATHS	2.5
FEES	\$7,093	DOM	158				



201 EAST 74TH ST #22A

Upper East Side

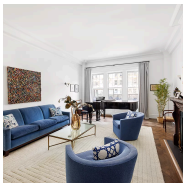
TYPE	CONDO	STATUS	CONTRACT	ASK	\$5,550,000	INITIAL	\$5,550,000
SQFT	2,179	PPSF	\$2,548	BEDS	3	BATHS	3.5
FEES	\$7,661	DOM	N/A				



69 WOOSTER ST #3

Soho

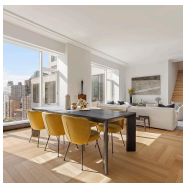
TYPE	COOP	STATUS	CONTRACT	ASK	\$5,500,000	INITIAL	\$5,600,000
SQFT	4,581	PPSF	\$1,201	BEDS	2	BATHS	1
FEES	\$4,731	DOM	147				



610 WEST END AVE #2B

Upper West Side

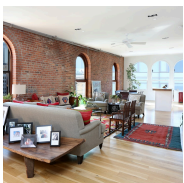
TYPE	COOP	STATUS	CONTRACT	ASK	\$5,495,000	INITIAL	\$5,495,000
SQFT	N/A	PPSF	N/A	BEDS	5	BATHS	4.5
FEES	N/A	DOM	16				



1289 LEXINGTON AVE #16C

Upper East Side

TYPE	CONDO	STATUS	CONTRACT	ASK	\$5,100,000	INITIAL	\$5,100,000
SQFT	2,792	PPSF	\$1,827	BEDS	3	BATHS	3.5
FEES	\$8,544	DOM	3				



345 WEST BROADWAY #PH

Soho

TYPE	COOP	STATUS	CONTRACT	ASK	\$5,050,000	INITIAL	N/A
SQFT	2,200	PPSF	\$2,296	BEDS	2	BATHS	2
FEES	N/A	DOM	N/A				

Compass is a licensed real estate broker and abides by Equal Housing Opportunity laws. All material presented herein is intended for informational purposes only. Information is compiled from sources deemed reliable but is subject to errors, omissions, changes in price, condition, sale, or withdrawal without notice. No statement is made as to the accuracy of any description. All measurements and square footages are approximate. This is not intended to solicit property already listed. Nothing herein shall be construed as legal, accounting or other professional advice outside the realm of real estate brokerage.