



COMPASS

Brooklyn Luxury Report

Jun 01 - 07, 2026, Residential Contracts \$2M+

Photo: 168 Pacific Street

The Brooklyn luxury real estate market, defined as all properties priced \$2M and above, saw 25 contracts signed this week, made up of 17 condos, 1 co-op, and 7 houses. The previous week saw 28 deals. For more information or data, please reach out to a Compass agent.

\$3,227,400

Average Asking Price

\$2,595,000

Median Asking Price

\$1,506

Average PPSF

1%

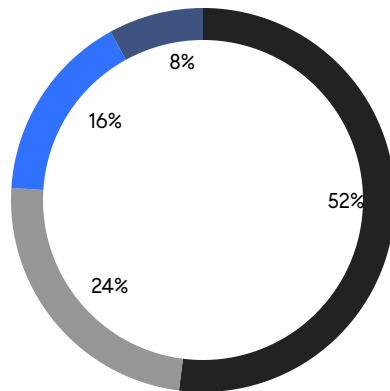
Average Discount

\$80,685,000

Total Volume

68

Average Days On Market



17

Condo Deal(s)

1

Co-op Deal(s)

7

Townhouse Deal(s)

\$2,859,295

Average Asking Price

\$2,359,000

Average Asking Price

\$4,245,429

Average Asking Price

\$2,495,000

Median Asking Price

\$2,359,000

Median Asking Price

\$2,875,000

Median Asking Price

\$1,699

Average PPSF

\$961

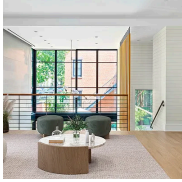
Average PPSF

1,806

Average SqFt

4,763

Average SqFt



435 Henry Street

Cobble Hill

Contract Signed

Type	Townhouse	Price	\$12,995,000	Sq. Ft.	7,750	Beds	6
DOM	72	Initial	\$12,995,000	PPSF	\$1,677	Baths	6

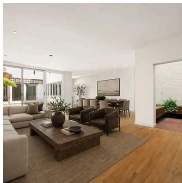


113 North 9th Street, Unit 2

Williamsburg

Contract Signed

Type	Condo	Price	\$5,225,000	Sq. Ft.	2,996	Beds	4
DOM	149	Initial	\$5,495,000	PPSF	\$1,744	Baths	3



175 Pacific Street, Unit 1

Cobble Hill

Contract Signed

Type	Condo	Price	\$4,000,000	Sq. Ft.	4,462	Beds	3
DOM	41	Initial	\$4,000,000	PPSF	\$897	Baths	3



241 Carroll Street, Unit 4

Carroll Gardens

Contract Signed

Type	Condo	Price	\$3,495,000	Sq. Ft.	1,520	Beds	3
DOM	18	Initial	\$3,495,000	PPSF	\$2,300	Baths	2

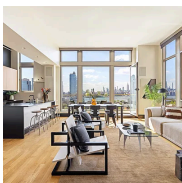


501 8th Avenue, Unit 2

Park Slope

Contract Signed

Type	Condo	Price	\$3,300,000	Sq. Ft.	1,672	Beds	4
DOM	43	Initial	\$3,300,000	PPSF	\$1,974	Baths	3



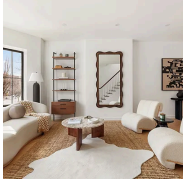
144 North 8th Street, Unit 12A

Williamsburg

Contract Signed

Type	Condo	Price	\$3,250,000	Sq. Ft.	1,438	Beds	2
DOM	26	Initial	\$3,250,000	PPSF	\$2,261	Baths	2

Compass is a licensed real estate broker and abides by Equal Housing Opportunity laws. All material presented herein is intended for informational purposes only. Information is compiled from sources deemed reliable but is subject to errors, omissions, changes in price, condition, sale, or withdrawal without notice. No statement is made as to the accuracy of any description. All measurements and square footages are approximate. This is not intended to solicit property already listed. Nothing herein shall be construed as legal, accounting or other professional advice outside the realm of real estate brokerage.

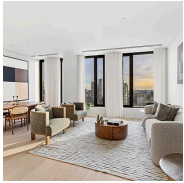


357 Eastern Parkway

Crown Heights

Contract Signed

Type	Townhouse	Price	\$3,100,000	Sq. Ft.	2,808	Beds	5
DOM	49	Initial	\$3,100,000	PPSF	\$1,104	Baths	4.5

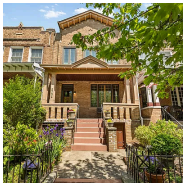


30 Front Street, Unit 28C

Dumbo

Contract Signed

Type	Condo	Price	\$2,950,000	Sq. Ft.	1,326	Beds	2
DOM	110	Initial	\$2,950,000	PPSF	\$2,225	Baths	2



573 16th Street

Windsor Terrace

Contract Signed

Type	Townhouse	Price	\$2,900,000	Sq. Ft.	2,556	Beds	4
DOM	44	Initial	\$2,900,000	PPSF	\$1,135	Baths	2

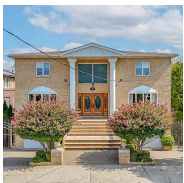


2102 Albemarle Terrace

Flatbush

Contract Signed

Type	Townhouse	Price	\$2,875,000	Sq. Ft.	3,300	Beds	5
DOM	14	Initial	\$2,875,000	PPSF	\$872	Baths	2

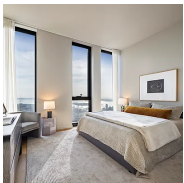


2017 East 74th Street

Georgetown

Contract Signed

Type	Townhouse	Price	\$2,849,000	Sq. Ft.	8,184	Beds	6
DOM	88	Initial	\$2,849,000	PPSF	\$349	Baths	6



85 Fleet Street, Unit 57C

Downtown Brooklyn

Contract Signed

Type	Condo	Price	\$2,645,000	Sq. Ft.	1,652	Beds	3
DOM	201	Initial	\$2,645,000	PPSF	\$1,602	Baths	3

Compass is a licensed real estate broker and abides by Equal Housing Opportunity laws. All material presented herein is intended for informational purposes only. Information is compiled from sources deemed reliable but is subject to errors, omissions, changes in price, condition, sale, or withdrawal without notice. No statement is made as to the accuracy of any description. All measurements and square footages are approximate. This is not intended to solicit property already listed. Nothing herein shall be construed as legal, accounting or other professional advice outside the realm of real estate brokerage.



851 Carroll Street, Unit GARDEN

Contract Signed

Park Slope

Type	Condo	Price	\$2,595,000	Sq. Ft.	2,147	Beds	2
DOM	16	Initial	\$2,595,000	PPSF	\$1,209	Baths	2.5

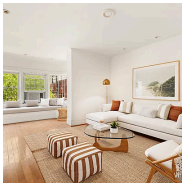


429 Hancock Street

Contract Signed

Bedford Stuyvesant

Type	Townhouse	Price	\$2,500,000	Sq. Ft.	3,975	Beds	4
DOM	72	Initial	\$2,750,000	PPSF	\$629	Baths	3



1447 Union Street

Contract Signed

Crown Heights

Type	Townhouse	Price	\$2,499,000	Sq. Ft.	-	Beds	4
DOM	22	Initial	\$2,499,000	PPSF	-	Baths	1

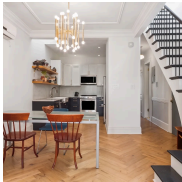


21 Conselyea Street, Unit 3

Contract Signed

Williamsburg

Type	Condo	Price	\$2,495,000	Sq. Ft.	1,737	Beds	3
DOM	-	Initial	\$2,495,000	PPSF	\$1,437	Baths	3

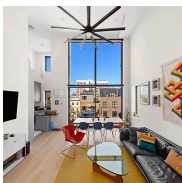


409 3rd Street, Unit 4

Contract Signed

Park Slope

Type	Condo	Price	\$2,425,000	Sq. Ft.	1,125	Beds	3
DOM	43	Initial	\$2,575,000	PPSF	\$2,156	Baths	2



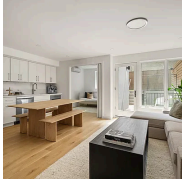
33 Conselyea Street, Unit PH

Contract Signed

Williamsburg

Type	Condo	Price	\$2,395,000	Sq. Ft.	1,578	Beds	3
DOM	60	Initial	\$2,675,000	PPSF	\$1,518	Baths	2

Compass is a licensed real estate broker and abides by Equal Housing Opportunity laws. All material presented herein is intended for informational purposes only. Information is compiled from sources deemed reliable but is subject to errors, omissions, changes in price, condition, sale, or withdrawal without notice. No statement is made as to the accuracy of any description. All measurements and square footages are approximate. This is not intended to solicit property already listed. Nothing herein shall be construed as legal, accounting or other professional advice outside the realm of real estate brokerage.



291 6th Avenue, Unit 1

Park Slope

Contract Signed

Type	Condo	Price	\$2,390,000	Sq. Ft.	1,445	Beds	2
DOM	22	Initial	\$2,390,000	PPSF	\$1,654	Baths	2

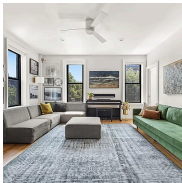


170 South 1st Street, Unit 4B

Williamsburg

Contract Signed

Type	Condo	Price	\$2,375,000	Sq. Ft.	1,454	Beds	3
DOM	71	Initial	\$2,450,000	PPSF	\$1,634	Baths	2



264 6th Avenue, Unit 3DE

Park Slope

Contract Signed

Type	Coop	Price	\$2,359,000	Sq. Ft.	-	Beds	4
DOM	22	Initial	\$2,359,000	PPSF	-	Baths	2

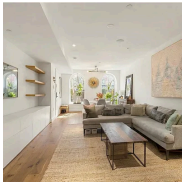


480 Kent Avenue, Unit 20D

Williamsburg

Contract Signed

Type	Condo	Price	\$2,350,000	Sq. Ft.	1,145	Beds	2
DOM	73	Initial	\$2,350,000	PPSF	\$2,053	Baths	2

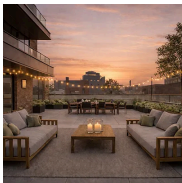


574 Washington Avenue, Unit 1

Clinton Hill

Contract Signed

Type	Condo	Price	\$2,298,000	Sq. Ft.	2,078	Beds	3
DOM	233	Initial	\$2,600,000	PPSF	\$1,106	Baths	3



1025 Pacific Street, Unit 2

Crown Heights

Contract Signed

Type	Condo	Price	\$2,295,000	Sq. Ft.	1,706	Beds	3
DOM	84	Initial	\$2,295,000	PPSF	\$1,346	Baths	3

Compass is a licensed real estate broker and abides by Equal Housing Opportunity laws. All material presented herein is intended for informational purposes only. Information is compiled from sources deemed reliable but is subject to errors, omissions, changes in price, condition, sale, or withdrawal without notice. No statement is made as to the accuracy of any description. All measurements and square footages are approximate. This is not intended to solicit property already listed. Nothing herein shall be construed as legal, accounting or other professional advice outside the realm of real estate brokerage.



50 Bridge Park Drive, Unit 20E

Brooklyn Heights

Contract Signed

Type	Condo	Price	\$2,125,000	Sq. Ft.	1,214	Beds	2
DOM	58	Initial	\$2,125,000	PPSF	\$1,751	Baths	2

Compass is a licensed real estate broker and abides by Equal Housing Opportunity laws. All material presented herein is intended for informational purposes only. Information is compiled from sources deemed reliable but is subject to errors, omissions, changes in price, condition, sale, or withdrawal without notice. No statement is made as to the accuracy of any description. All measurements and square footages are approximate. This is not intended to solicit property already listed. Nothing herein shall be construed as legal, accounting or other professional advice outside the realm of real estate brokerage.

© 2026 Compass. This report and information provided in this report are proprietary to Compass and may not be sold, used or reprinted, in whole or part, without the prior written consent in each instance of Compass. Data is subject to revision. Sourced from Compass proprietary database. All rights reserved.

[compass.com](https://www.compass.com)