



COMPASS

# Brooklyn Luxury Report

Dec 29 - Jan 04, 2025, Residential Contracts \$2M+

Photo: [3 Wythe Lane](#)



The Brooklyn luxury real estate market, defined as all properties priced \$2M and above, saw 9 contracts signed this week, made up of 5 condos, and 4 houses. The previous week saw 13 deals. For more information or data, please reach out to a Compass agent.

\$3,205,334

Average Asking Price

\$2,999,000

Median Asking Price

\$1,621

Average PPSF

0%

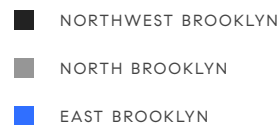
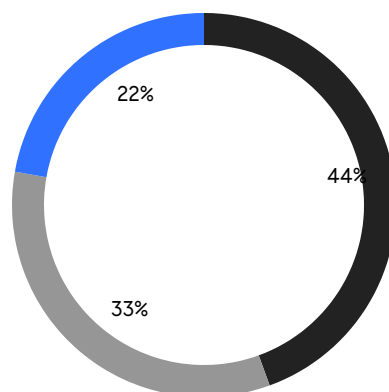
Average Discount

\$28,848,000

Total Volume

90

Average Days On Market



5

Condo Deal(s)

0

Co-op Deal(s)

4

Townhouse Deal(s)

\$3,459,800

Average Asking Price

\$0

Average Asking Price

\$2,887,250

Average Asking Price

\$3,200,000

Median Asking Price

\$0

Median Asking Price

\$2,937,000

Median Asking Price

\$1,942

Average PPSF

\$1,085

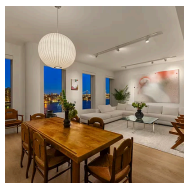
Average PPSF

1,772

Average SqFt

2,619

Average SqFt

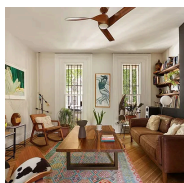


### 1 John Street, Unit PHC

Dumbo

Contract Signed

Type	Condo	Price	\$6,300,000	Sq. Ft.	2,567	Beds	3
DOM	-	Initial	\$6,300,000	PPSF	\$2,455	Baths	3.5



### 123 Cambridge Place

Clinton Hill

Contract Signed

Type	Townhouse	Price	\$3,675,000	Sq. Ft.	2,736	Beds	6
DOM	-	Initial	\$3,675,000	PPSF	\$1,344	Baths	4



### 127 Kent Avenue, Unit 2G

Williamsburg

Contract Signed

Type	Condo	Price	\$3,250,000	Sq. Ft.	1,354	Beds	2
DOM	-	Initial	\$3,250,000	PPSF	\$2,400	Baths	2

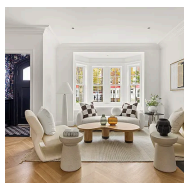


### 294 Hicks Street, Unit 2

Brooklyn Heights

Contract Signed

Type	Condo	Price	\$3,200,000	Sq. Ft.	1,976	Beds	2
DOM	210	Initial	\$3,200,000	PPSF	\$1,620	Baths	2

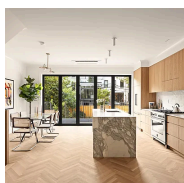


### 108 Midwood Street

Prospect Lefferts Gardens

Contract Signed

Type	Townhouse	Price	\$2,999,000	Sq. Ft.	-	Beds	4
DOM	57	Initial	\$2,999,000	PPSF	-	Baths	4.5



### 95 Monroe Street

Bedford Stuyvesant

Contract Signed

Type	Townhouse	Price	\$2,875,000	Sq. Ft.	2,520	Beds	4
DOM	47	Initial	\$2,875,000	PPSF	\$1,141	Baths	3

Compass is a licensed real estate broker and abides by Equal Housing Opportunity laws. All material presented herein is intended for informational purposes only. Information is compiled from sources deemed reliable but is subject to errors, omissions, changes in price, condition, sale, or withdrawal without notice. No statement is made as to the accuracy of any description. All measurements and square footages are approximate. This is not intended to solicit property already listed. Nothing herein shall be construed as legal, accounting or other professional advice outside the realm of real estate brokerage.

**127 Kent Avenue, Unit 3B**

Williamsburg

**Contract Signed**

Type	Condo	Price	\$2,300,000	Sq. Ft.	1,158	Beds	2
DOM	-	Initial	\$2,300,000	PPSF	\$1,986	Baths	2

**19 North Henry Street, Unit 1B**

Williamsburg

**Contract Signed**

Type	Condo	Price	\$2,249,000	Sq. Ft.	1,802	Beds	2
DOM	68	Initial	\$2,249,000	PPSF	\$1,249	Baths	2

**10 Carroll Street**

Columbia Street Waterfront District

**Contract Signed**

Type	Townhouse	Price	\$2,000,000	Sq. Ft.	2,601	Beds	4
DOM	67	Initial	\$2,000,000	PPSF	\$769	Baths	3

Compass is a licensed real estate broker and abides by Equal Housing Opportunity laws. All material presented herein is intended for informational purposes only. Information is compiled from sources deemed reliable but is subject to errors, omissions, changes in price, condition, sale, or withdrawal without notice. No statement is made as to the accuracy of any description. All measurements and square footages are approximate. This is not intended to solicit property already listed. Nothing herein shall be construed as legal, accounting or other professional advice outside the realm of real estate brokerage.