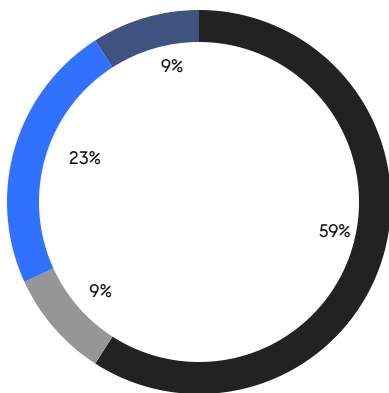
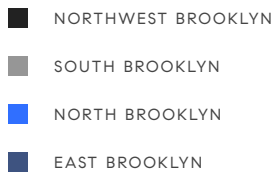


BROOKLYN WEEKLY LUXURY REPORT



51 JAY STREET, UNIT PHE

RESIDENTIAL CONTRACTS
\$2 MILLION AND UP



22

CONTRACTS SIGNED
THIS WEEK

\$74,250,745

TOTAL CONTRACT VOLUME

The Brooklyn luxury real estate market, defined as all properties priced \$2M and above, saw 22 contracts signed this week, made up of 12 condos, 1 co-op, and 9 houses. The previous week saw 35 deals. For more information or data, please reach out to a Compass agent.

\$3,375,034

AVERAGE ASKING PRICE

\$2,840,000

MEDIAN ASKING PRICE

\$1,508

AVERAGE PPSF

2%

AVERAGE DISCOUNT

\$74,250,745

TOTAL VOLUME

120

AVERAGE DAYS ON MARKET

17 Montgomery Place in Park Slope entered contract this week, with a last asking price of \$8,500,000. Built in 1887, this brownstone spans 4,738 square feet with 8 beds and 4 full baths. It features a 30-foot-wide footprint, a sweeping staircase, arched double doors, original details including pocket doors, parquet floors, and elaborate millwork and moldings, a spacious eat-in kitchen with abundant counter space and high-end appliances, a formal dining room, a private garden with koi pond, and much more.

Also signed this week was Unit 1 at 109 Willow Street in Brooklyn Heights, with a last asking price of \$7,150,000. Originally built in 1920 and recently converted, this condo unit spans 4,545 square feet with 4 beds and 4 full baths. It features king-sized bedrooms with abundant closet and storage space, private outdoor space, hardwood plank flooring, natural stone and marble countertops, custom wood cabinetry, and much more. The building provides a virtual doorman, porter service, professional management, and many other amenities.

12

CONDO DEAL(S)

1

CO-OP DEAL(S)

9

TOWNHOUSE DEAL(S)

\$3,114,729

AVERAGE ASKING PRICE

\$2,195,000

AVERAGE ASKING PRICE

\$3,853,223

AVERAGE ASKING PRICE

\$2,667,500

MEDIAN ASKING PRICE

\$2,195,000

MEDIAN ASKING PRICE

\$3,250,000

MEDIAN ASKING PRICE

\$1,840

AVERAGE PPSF

\$1,010

AVERAGE PPSF

1,789

AVERAGE SQFT

3,819

AVERAGE SQFT



17 MONTGOMERY PL

Park Slope

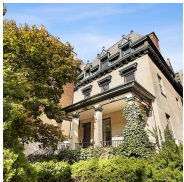
TYPE	TOWNHOUSE	STATUS	CONTRACT	ASK	\$8,500,000	INITIAL	\$9,750,000
SQFT	4,738	PPSF	\$1,795	BEDS	8	BATHS	4.5
FEES	\$1,674	DOM	283				



109 WILLOW ST #1

Brooklyn Heights

TYPE	CONDO	STATUS	CONTRACT	ASK	\$7,150,000	INITIAL	\$7,150,000
SQFT	4,545	PPSF	\$1,574	BEDS	4	BATHS	4.5
FEES	\$4,404	DOM	15				



315 WASHINGTON AVE

Clinton Hill

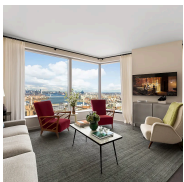
TYPE	TOWNHOUSE	STATUS	CONTRACT	ASK	\$5,900,000	INITIAL	\$5,900,000
SQFT	6,931	PPSF	\$852	BEDS	11	BATHS	8.5
FEES	\$1,383	DOM	791				



428 CLERMONT AVE

Fort Greene

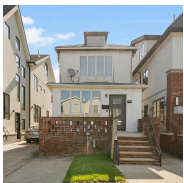
TYPE	TOWNHOUSE	STATUS	CONTRACT	ASK	\$3,749,000	INITIAL	\$3,995,000
SQFT	N/A	PPSF	N/A	BEDS	5	BATHS	3.5
FEES	\$893	DOM	159				



1 CITY POINT #48D

Downtown Brooklyn

TYPE	CONDOP	STATUS	CONTRACT	ASK	\$3,566,745	INITIAL	\$3,566,745
SQFT	1,454	PPSF	\$2,454	BEDS	3	BATHS	3
FEES	N/A	DOM	N/A				



1843 EAST 4TH ST

Gravesend

TYPE	TOWNHOUSE	STATUS	CONTRACT	ASK	\$3,500,000	INITIAL	\$3,500,000
SQFT	2,600	PPSF	\$1,347	BEDS	4	BATHS	2.5
FEES	N/A	DOM	157				

Compass is a licensed real estate broker and abides by Equal Housing Opportunity laws. All material presented herein is intended for informational purposes only. Information is compiled from sources deemed reliable but is subject to errors, omissions, changes in price, condition, sale, or withdrawal without notice. No statement is made as to the accuracy of any description. All measurements and square footages are approximate. This is not intended to solicit property already listed. Nothing herein shall be construed as legal, accounting or other professional advice outside the realm of real estate brokerage.



8 SOUTH 4TH ST #22E

Williamsburg

TYPE	CONDO	STATUS	CONTRACT	ASK	\$3,270,000	INITIAL	\$3,270,000
SQFT	1,623	PPSF	\$2,015	BEDS	3	BATHS	2.5
FEES	\$3,258	DOM	12				



123A 2ND PL

Carroll Gardens

TYPE	TOWNHOUSE	STATUS	CONTRACT	ASK	\$3,250,000	INITIAL	\$3,300,000
SQFT	3,072	PPSF	\$1,058	BEDS	4	BATHS	4
FEES	\$808	DOM	178				



480 KENT AVE #20A

Williamsburg

TYPE	CONDO	STATUS	CONTRACT	ASK	\$3,000,000	INITIAL	\$3,000,000
SQFT	1,442	PPSF	\$2,081	BEDS	2	BATHS	2
FEES	\$4,243	DOM	4				



176 MAC DONOUGH ST

Bedford Stuyvesant

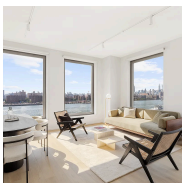
TYPE	TOWNHOUSE	STATUS	CONTRACT	ASK	\$2,995,000	INITIAL	\$3,200,000
SQFT	4,300	PPSF	\$697	BEDS	6	BATHS	4
FEES	\$516	DOM	75				



103 GRAND ST #GARDEN1

Williamsburg

TYPE	CONDO	STATUS	CONTRACT	ASK	\$2,995,000	INITIAL	\$3,250,000
SQFT	2,508	PPSF	\$1,195	BEDS	1	BATHS	1
FEES	\$2,095	DOM	144				

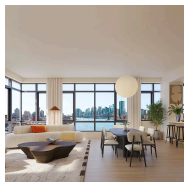


8 SOUTH 4TH ST #11A

Williamsburg

TYPE	CONDO	STATUS	CONTRACT	ASK	\$2,685,000	INITIAL	\$2,685,000
SQFT	1,319	PPSF	\$2,036	BEDS	2	BATHS	2.5
FEES	\$2,323	DOM	12				

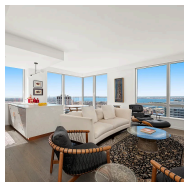
Compass is a licensed real estate broker and abides by Equal Housing Opportunity laws. All material presented herein is intended for informational purposes only. Information is compiled from sources deemed reliable but is subject to errors, omissions, changes in price, condition, sale, or withdrawal without notice. No statement is made as to the accuracy of any description. All measurements and square footages are approximate. This is not intended to solicit property already listed. Nothing herein shall be construed as legal, accounting or other professional advice outside the realm of real estate brokerage.



480 KENT AVE #16B

Williamsburg

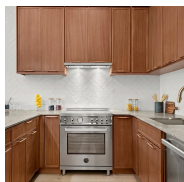
TYPE	CONDO	STATUS	CONTRACT	ASK	\$2,650,000	INITIAL	\$2,650,000
SQFT	1,191	PPSF	\$2,226	BEDS	2	BATHS	2
FEES	\$3,505	DOM	6				



1 CITY POINT #65H

Downtown Brooklyn

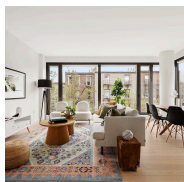
TYPE	CONDOP	STATUS	CONTRACT	ASK	\$2,625,000	INITIAL	\$2,625,000
SQFT	1,189	PPSF	\$2,208	BEDS	2	BATHS	2
FEES	N/A	DOM	26				



76 1ST PL #4

Carroll Gardens

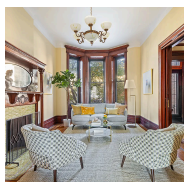
TYPE	CONDO	STATUS	CONTRACT	ASK	\$2,495,000	INITIAL	\$2,495,000
SQFT	1,270	PPSF	\$1,965	BEDS	3	BATHS	2
FEES	\$937	DOM	89				



145 PRESIDENT ST #3B

Carroll Gardens

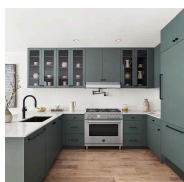
TYPE	CONDO	STATUS	CONTRACT	ASK	\$2,395,000	INITIAL	\$2,400,000
SQFT	1,432	PPSF	\$1,673	BEDS	3	BATHS	2
FEES	\$2,904	DOM	121				



28 CLARKSON AVE

Flatbush

TYPE	TOWNHOUSE	STATUS	CONTRACT	ASK	\$2,295,000	INITIAL	\$2,295,000
SQFT	3,516	PPSF	\$653	BEDS	6	BATHS	2.5
FEES	N/A	DOM	21				



345 BERGEN ST #3

Boerum Hill

TYPE	CONDO	STATUS	CONTRACT	ASK	\$2,295,000	INITIAL	\$2,295,000
SQFT	1,554	PPSF	\$1,477	BEDS	3	BATHS	2.5
FEES	\$2,115	DOM	23				

Compass is a licensed real estate broker and abides by Equal Housing Opportunity laws. All material presented herein is intended for informational purposes only. Information is compiled from sources deemed reliable but is subject to errors, omissions, changes in price, condition, sale, or withdrawal without notice. No statement is made as to the accuracy of any description. All measurements and square footages are approximate. This is not intended to solicit property already listed. Nothing herein shall be construed as legal, accounting or other professional advice outside the realm of real estate brokerage.



371 HERKIMER ST

Bedford Stuyvesant

TYPE	TOWNHOUSE	STATUS	CONTRACT	ASK	\$2,295,000	INITIAL	\$2,295,000
SQFT	2,895	PPSF	\$793	BEDS	5	BATHS	4
FEES	\$309	DOM	50				



282 17TH ST #3

Greenwood

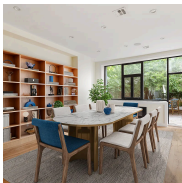
TYPE	CONDO	STATUS	CONTRACT	ASK	\$2,250,000	INITIAL	\$2,529,000
SQFT	1,930	PPSF	\$1,166	BEDS	3	BATHS	3
FEES	\$930	DOM	183				



59 MONTGOMERY PL #1B/2B

Park Slope

TYPE	COOP	STATUS	CONTRACT	ASK	\$2,195,000	INITIAL	\$2,195,000
SQFT	N/A	PPSF	N/A	BEDS	2	BATHS	2
FEES	\$1,275	DOM	39				



242 VAN BRUNT ST

Red Hook

TYPE	TOWNHOUSE	STATUS	CONTRACT	ASK	\$2,195,000	INITIAL	\$2,275,000
SQFT	2,498	PPSF	\$879	BEDS	4	BATHS	3.5
FEES	\$208	DOM	118				

Compass is a licensed real estate broker and abides by Equal Housing Opportunity laws. All material presented herein is intended for informational purposes only. Information is compiled from sources deemed reliable but is subject to errors, omissions, changes in price, condition, sale, or withdrawal without notice. No statement is made as to the accuracy of any description. All measurements and square footages are approximate. This is not intended to solicit property already listed. Nothing herein shall be construed as legal, accounting or other professional advice outside the realm of real estate brokerage.