

DEC 26, 2022 - JAN 01, 2023

The Brooklyn luxury real estate market, defined as all properties priced \$2M and above, saw 4 contracts signed this week, made up of 2 condos, and 2 houses. The previous week saw 9 deals. For more information or data, please reach out to a Compass agent.

\$2,651,012

Average Asking Price

\$2,257,523

Median Asking Price

\$1,349

Average PPSF

7%

Average Discount

\$10,604,045

Total Volume

154

Average Days On Market

224 Withers Street in Williamsburg entered contract this week, with a last asking price of \$3,899,000. Built in 2003, this 25-foot-wide townhouse spans 4,750 square feet with 8 beds and 6 full baths. It features a red brick facade, two gated parking spots, a fenced backyard patio, hardwood floors, stainless steel appliances, high ceilings, a storage shed, and much more.

Also signed this week was Unit PH at 101 Douglass Street in Boerum Hill, with a last asking price of \$2,295,000. This penthouse condo unit spans 1,272 square feet with 3 beds and 2 full baths. It features double-height living and dining spaces, walnut hardwood floors throughout, a modern open kitchen with high-end appliances, smart home lighting, a private south-facing outdoor terrace, multi-zone heating and cooling, and community roof deck, and much more.

2

Condo Deal(s)

0

Co-op Deal(s)

2

Townhouse Deal(s)

\$2,257,523

Average Asking Price

\$0

Average Asking Price

\$3,044,500

Average Asking Price

\$2,257,523

Median Asking Price

\$0

Median Asking Price

\$3,044,500

Median Asking Price

\$1,954

Average PPSF

N/A

Average PPSF

\$743

Average PPSF

1,164

Average SqFt

N/A

Average SqFt

4,025

Average SqFt



224 WITHERS ST

Williamsburg

Type	Townhouse	Status	Contract
SqFt	4,750	Beds	8
PPSF	\$821	Fees	\$992

Ask	\$3,899,000
Baths	6
DOM	284

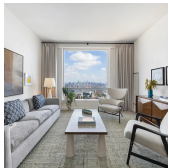


101 DOUGLASS ST #PH

Boerum Hill

Type	Condo	Status	Contract
SqFt	1,272	Beds	3
PPSF	\$1,805	Fees	\$1,389

Ask	\$2,295,000
Baths	2
DOM	73

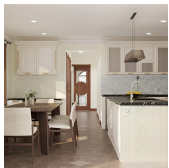


1 CITY POINT #62B

Downtown Brooklyn

Type	Condop	Status	Contract
SqFt	1,056	Beds	2
PPSF	\$2,103	Fees	\$1,294

Ask	\$2,220,045
Baths	2
DOM	N/A



2456 EAST 12TH ST

Sheepshead Bay

Type	Townhouse	Status	Contract
SqFt	3,300	Beds	5
PPSF	\$664	Fees	\$819

Ask	\$2,190,000
Baths	4.5
DOM	104

Compass is a licensed real estate broker and abides by Equal Housing Opportunity laws. All material presented herein is intended for informational purposes only. Information is compiled from sources deemed reliable but is subject to errors, omissions, changes in price, condition, sale, or withdrawal without notice. No statement is made as to the accuracy of any description. All measurements and square footages are approximate. This is not intended to solicit property already listed. Nothing herein shall be construed as legal, accounting or other professional advice outside the realm of real estate brokerage.