

CHERIE
BERGER
TEAM

December 2021

Basking Ridge Market Insights

Basking Ridge

DECEMBER 2021

Market Profile & Trends Overview

The table belows shows data & statistics for December 2021 (CM), and the percentage difference of these metrics compared to data from last month (LM), the last three months (L3M), the same month last year (PYM), the entire last year (LY), prior year (PY), year-to-date (YTD), and the prior year-to-date (PYTD).

		CM	LM	L3M	PYM	LY	PY	YTD	PYTD
Inventory	# OF PROPERTIES	24	-40%	-54%	-62%	-77%	-86%	-	-
	MEDIAN PRICE	\$904,500	5%	5%	25%	25%	26%	-	-
	AVERAGE PRICE	\$1,102,635	13%	16%	20%	32%	37%	-	-
	PRICE PER SQFT	\$303	4%	2%	5%	12%	16%	-	-
	MONTHS OF SUPPLY	0.6	-54%	-52%	-66%	-41%	-89%	-	-
New Listings	# OF PROPERTIES	15	-46%	-62%	0%	-70%	-76%	633	-14.6%
	MEDIAN PRICE	\$589,999	3%	-5%	26%	-10%	-8%	\$699,000	6.1%
	AVERAGE PRICE	\$587,536	-12%	-18%	10%	-18%	-16%	\$760,628	7.9%
	PRICE PER SQFT	\$298	2%	2%	19%	10%	14%	\$288	9.5%
Sales	# OF PROPERTIES	42	31%	-6%	14%	15%	12%	556	23.3%
	MEDIAN PRICE	\$623,750	6%	-4%	-11%	-1%	12%	\$650,250	12.1%
	AVERAGE PRICE	\$654,774	10%	-4%	1%	2%	8%	\$718,966	16.3%
	PRICE PER SQFT	\$295	22%	7%	6%	13%	17%	\$285	12.6%
	SALE-TO-LIST RATIO	101.4%	1.0%	1%	2.6%	3.5%	4.4%	101.0%	3.9%

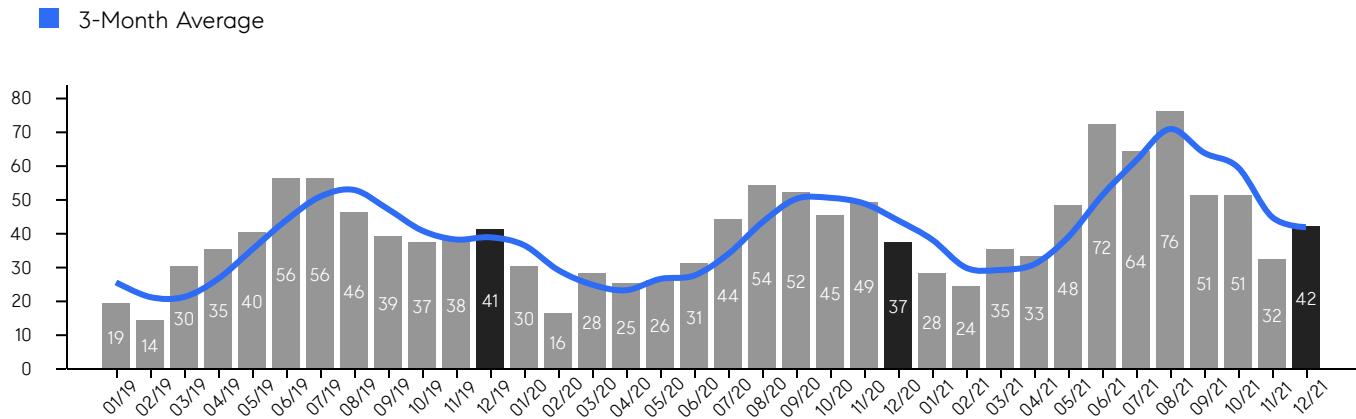
© 2021. Based on information from Garden State MLS, LLC for the period of January 2018 through December 2021. Due to MLS reporting methods and allowable reporting policy, this data is only informational and may not be completely accurate. Data maintained by the MLS may not reflect all real estate activity in the market.

Basking Ridge

DECEMBER 2021

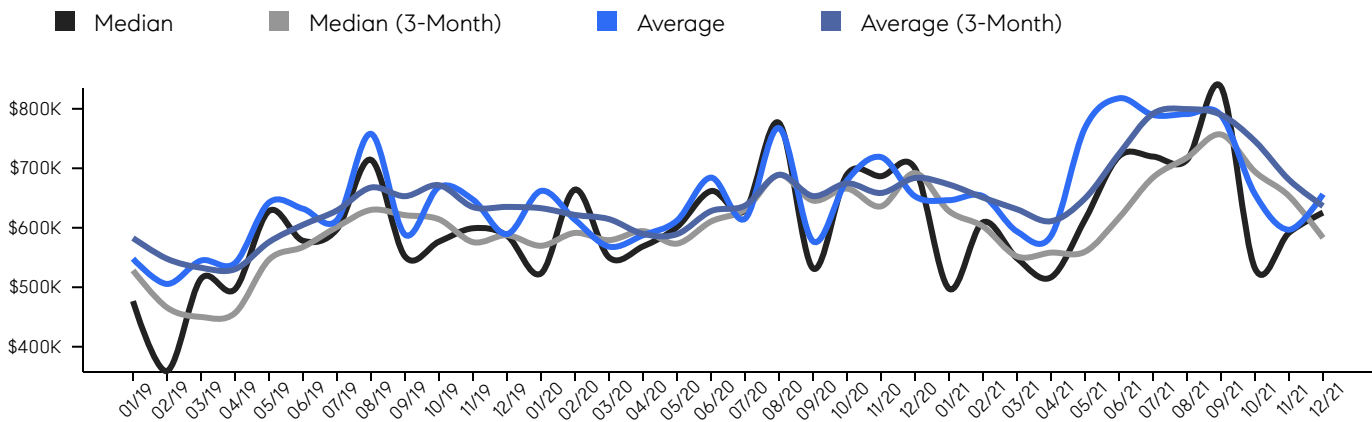
Property Sales

There were 42 sales in December 2021, a change of 14% from 37 in December 2020 and 31% from the 32 sales last month. Compared to December 2019 and 2020, sales were at their highest level. There have been 556 year-to-date (YTD) sales, which is 23.3% higher than last year's year-to-date sales of 451.



Property Prices

The median sales price in December 2021 was \$623,750, a change of -11% from \$698,000 in December 2020, and a change of 6% from \$589,950 last month. The average sales price in December 2021 was \$654,774, a change of 1% from in December 2020, and a change of 10% from last month, and was at its highest level compared to 2020 and 2019.



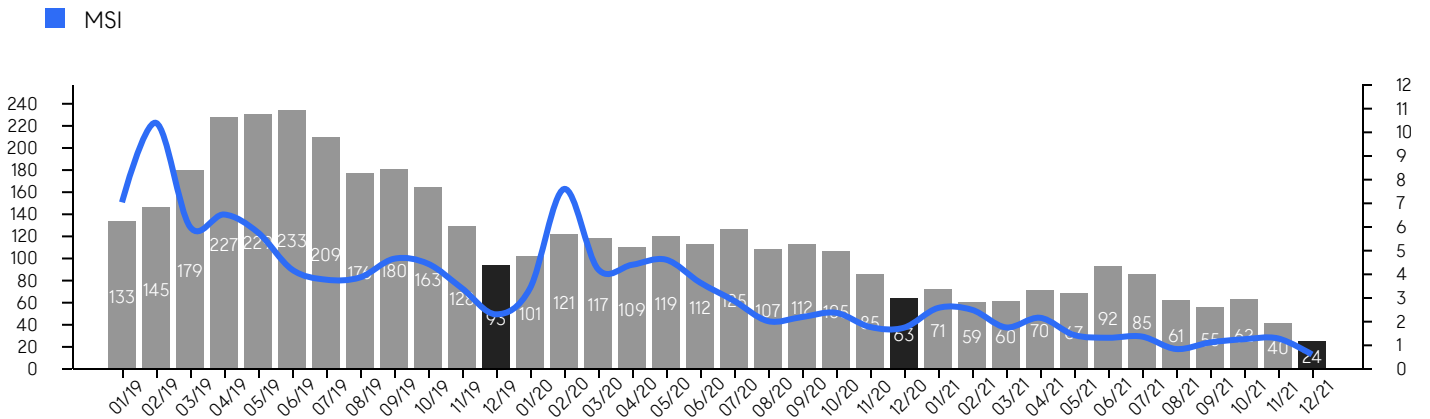
© 2021. Based on information from Garden State MLS, LLC for the period of January 2018 through December 2021. Due to MLS reporting methods and allowable reporting policy, this data is only informational and may not be completely accurate. Data maintained by the MLS may not reflect all real estate activity in the market.

Basking Ridge

DECEMBER 2021

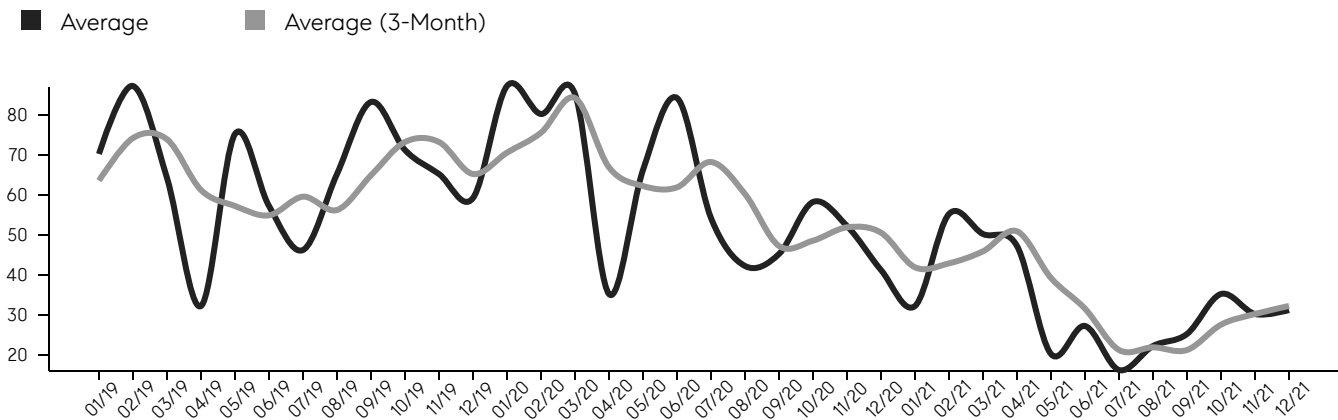
Inventory & MSI

The total inventory of properties available for sale as of December 2021 was 24, a difference of -40% from last month, and -62% from 63 in December 2020, and was at its lowest level compared to 2020 and 2019. The months of supply inventory (MSI) was at 0.6 months, a similar level compared to 2020 and 2019. A comparatively lower MSI benefits sellers, while a higher MSI benefits buyers.



Market Time

The average days on market (DOM) shows the number of days the average property is on the market before selling. An upward trend tends to indicate a move towards a buyer's market, while a downward trend tends to indicate a move to a seller's market. The DOM for December 2021 was 31, a change of 3% from 30 days last month, and -24% from 41 days in December 2020, and was at its lowest level compared to 2020 and 2019.



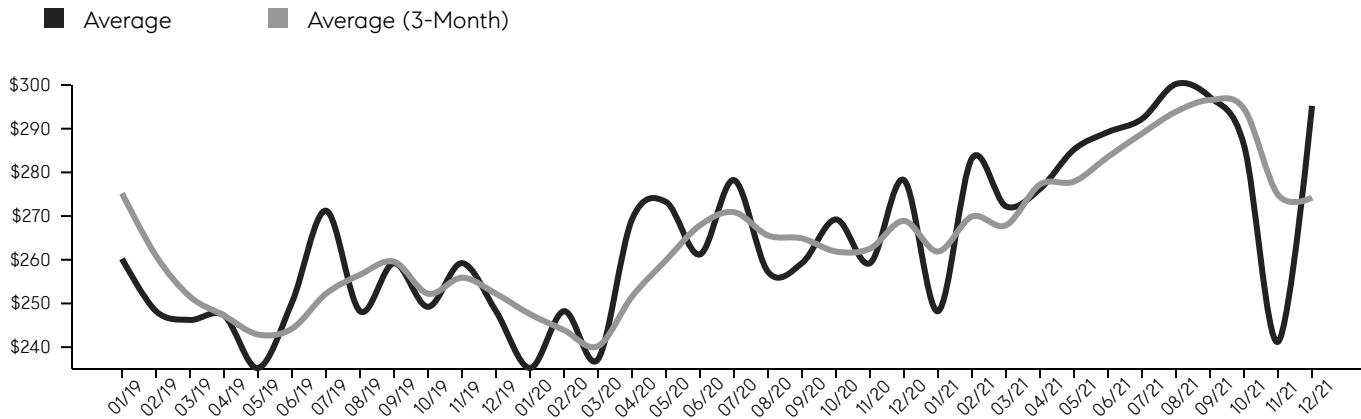
© 2021. Based on information from Garden State MLS, LLC for the period of January 2018 through December 2021. Due to MLS reporting methods and allowable reporting policy, this data is only informational and may not be completely accurate. Data maintained by the MLS may not reflect all real estate activity in the market.

Basking Ridge

DECEMBER 2021

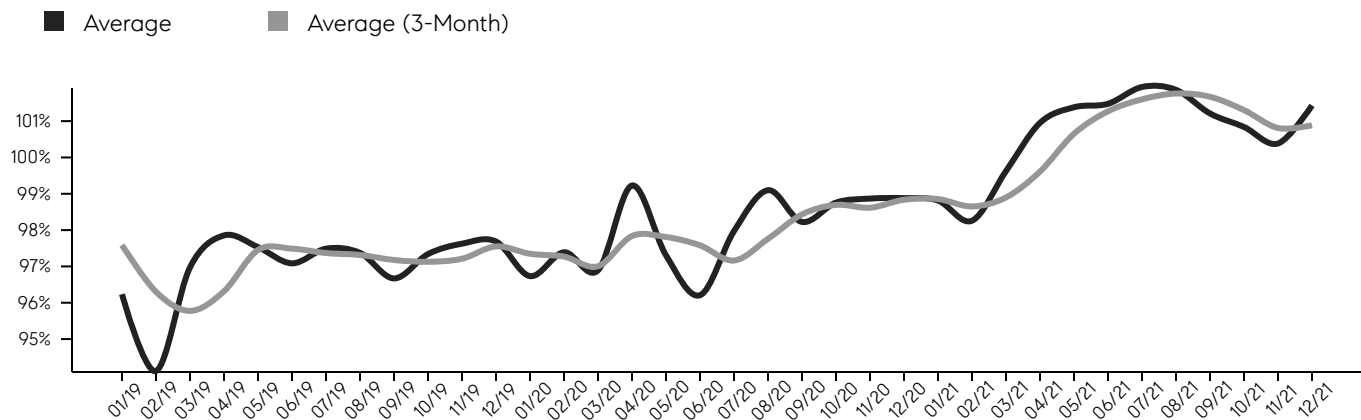
Selling Price Per Square Foot

The selling price per square foot (PPSF) is a great indicator for the direction of property values. Since median & average sales prices can be impacted by the "mix" of high or low end properties in the market, the selling price per square foot is a more normalized indicator on the direction of property values.



Selling Price vs. Listing Price

The selling price vs. listing price reveals the average amount that sellers are agreeing to come down from their list price. The lower the ratio is below 100%, the more of a buyer's market exists, while a ratio at or above 100% indicates more of a seller's market. The December 2021 selling price vs. listing price ratio was 101.4%, compared to 100.4% last month, and 98.9% in December 2020.



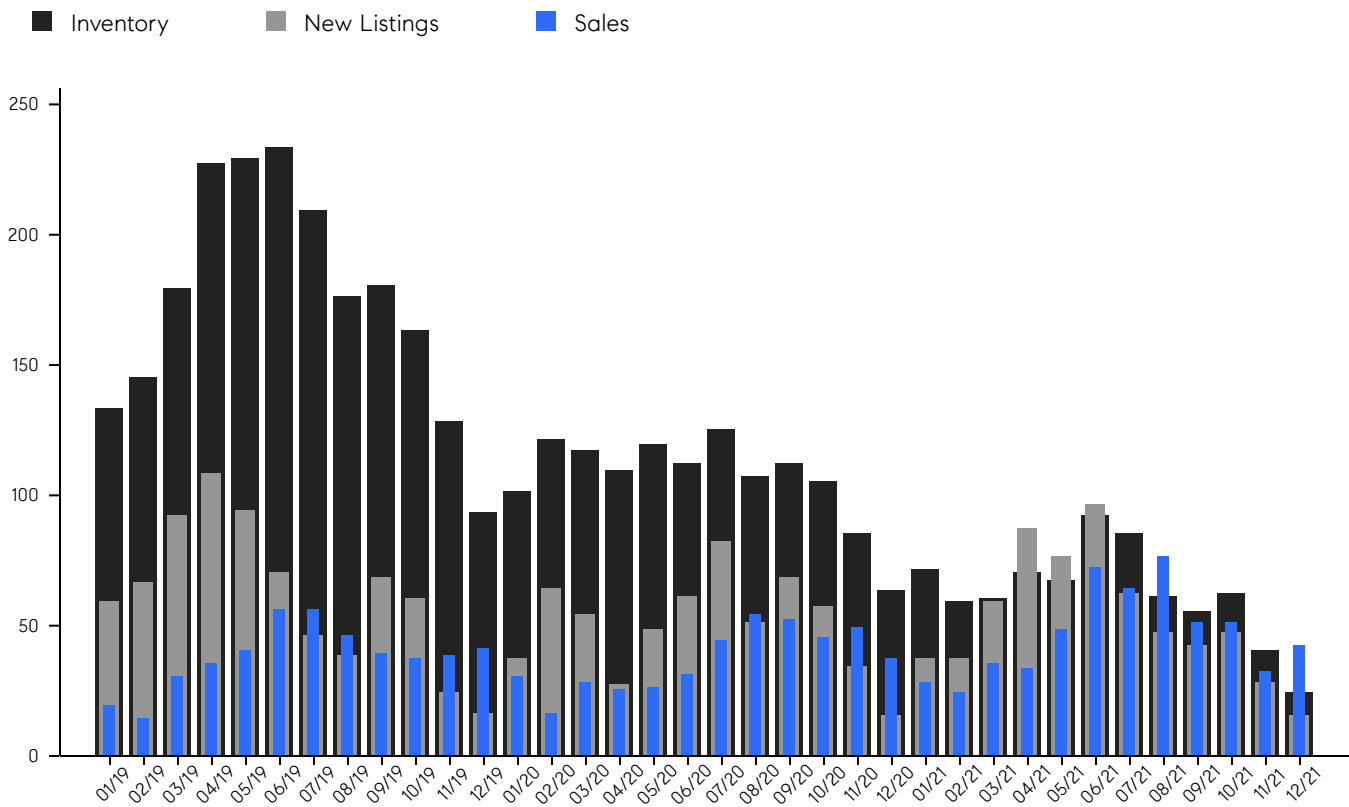
© 2021. Based on information from Garden State MLS, LLC for the period of January 2018 through December 2021. Due to MLS reporting methods and allowable reporting policy, this data is only informational and may not be completely accurate. Data maintained by the MLS may not reflect all real estate activity in the market.

Basking Ridge

DECEMBER 2021

Inventory, New Listings & Sales

This last view of the market combines monthly inventory of properties for sale along with new listings and sales. The graph shows the basic annual seasonality of the market, as well as the relationship between these items. The number of new listings in December 2021 was 15, a change of -46% from 28 last month and 0% from 15 in December 2020.



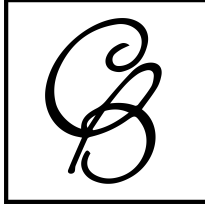
© 2021. Based on information from Garden State MLS, LLC for the period of January 2018 through December 2021. Due to MLS reporting methods and allowable reporting policy, this data is only informational and may not be completely accurate. Data maintained by the MLS may not reflect all real estate activity in the market.

Basking Ridge

DECEMBER 2021

MONTH	# OF SALES	3-MO AVG	MEDIAN SALE PRICE	3-MO AVG	AVERAGE SALE PRICE	3-MO AVG	DAYS ON MARKET	3-MO AVG	AVERAGE PPSF	3-MO AVG	SALE /LIST	3-MO AVG	INV	NEW LISTINGS	MSI
Dec '21	42	42	\$623K	\$581K	\$654K	\$635K	31	32	\$295	\$274	101.4%	100.9%	24	15	0.6
Nov '21	32	45	\$589K	\$652K	\$595K	\$679K	30	30	\$241	\$275	100.4%	100.8%	40	28	1.3
Oct '21	51	59	\$530K	\$693K	\$654K	\$744K	35	27	\$286	\$294	100.8%	101.3%	62	47	1.2
Sep '21	51	64	\$835K	\$755K	\$787K	\$788K	25	21	\$297	\$296	101.2%	101.6%	55	42	1.1
Aug '21	76	71	\$712K	\$716K	\$789K	\$798K	22	22	\$300	\$294	101.8%	101.7%	61	47	0.8
Jul '21	64	61	\$718K	\$683K	\$787K	\$790K	16	21	\$292	\$289	101.9%	101.6%	85	62	1.3
Jun '21	72	51	\$718K	\$615K	\$816K	\$722K	27	31	\$289	\$283	101.5%	101.2%	92	96	1.3
May '21	48	39	\$612K	\$558K	\$766K	\$648K	20	39	\$285	\$278	101.4%	100.6%	67	76	1.4
Apr '21	33	31	\$515K	\$557K	\$584K	\$609K	47	51	\$276	\$277	100.9%	99.6%	70	87	2.1
Mar '21	35	29	\$547K	\$550K	\$592K	\$629K	50	46	\$272	\$268	99.6%	98.9%	60	59	1.7
Feb '21	24	30	\$607K	\$601K	\$651K	\$649K	55	43	\$283	\$270	98.2%	98.6%	59	37	2.5
Jan '21	28	38	\$496K	\$626K	\$644K	\$671K	32	42	\$248	\$262	98.8%	98.8%	71	37	2.5
Dec '20	37	44	\$698K	\$690K	\$651K	\$682K	41	50	\$278	\$269	98.9%	98.8%	63	15	1.7
Nov '20	49	49	\$685K	\$634K	\$717K	\$657K	52	52	\$259	\$262	98.8%	98.6%	85	34	1.7
Oct '20	45	50	\$687K	\$664K	\$677K	\$673K	58	48	\$269	\$262	98.7%	98.7%	105	57	2.3
Sep '20	52	50	\$530K	\$644K	\$575K	\$652K	45	47	\$259	\$265	98.2%	98.4%	112	68	2.2
Aug '20	54	43	\$774K	\$687K	\$765K	\$687K	42	60	\$257	\$265	99.1%	97.7%	107	51	2.0
Jul '20	44	34	\$627K	\$629K	\$613K	\$636K	54	68	\$278	\$271	97.9%	97.1%	125	82	2.8
Jun '20	31	27	\$660K	\$609K	\$682K	\$626K	84	62	\$261	\$268	96.2%	97.6%	112	61	3.6
May '20	26	26	\$599K	\$572K	\$610K	\$588K	66	62	\$273	\$260	97.3%	97.8%	119	48	4.6
Apr '20	25	23	\$567K	\$593K	\$585K	\$588K	35	67	\$269	\$251	99.2%	97.8%	109	27	4.4
Mar '20	28	25	\$548K	\$578K	\$566K	\$613K	85	84	\$237	\$240	96.9%	97.0%	117	54	4.2
Feb '20	16	29	\$662K	\$590K	\$611K	\$620K	80	75	\$248	\$244	97.4%	97.2%	121	64	7.6
Jan '20	30	36	\$521K	\$568K	\$660K	\$631K	87	70	\$235	\$247	96.7%	97.3%	101	37	3.4
Dec '19	41	39	\$585K	\$586K	\$587K	\$633K	59	65	\$248	\$252	97.7%	97.5%	93	16	2.3
Nov '19	38	38	\$597K	\$574K	\$645K	\$633K	65	73	\$259	\$256	97.6%	97.2%	128	24	3.4
Oct '19	37	41	\$575K	\$613K	\$666K	\$670K	71	73	\$249	\$252	97.3%	97.1%	163	60	4.4
Sep '19	39	47	\$550K	\$620K	\$586K	\$651K	83	65	\$259	\$259	96.6%	97.1%	180	68	4.6
Aug '19	46	53	\$712K	\$628K	\$756K	\$666K	65	56	\$248	\$256	97.3%	97.3%	176	38	3.8
Jul '19	56	51	\$596K	\$600K	\$611K	\$627K	46	59	\$271	\$252	97.5%	97.3%	209	46	3.7
Jun '19	56	44	\$576K	\$566K	\$630K	\$603K	57	55	\$250	\$244	97.1%	97.5%	233	70	4.2
May '19	40	35	\$626K	\$545K	\$640K	\$574K	75	57	\$235	\$243	97.5%	97.4%	229	94	5.7
Apr '19	35	26	\$495K	\$455K	\$538K	\$529K	32	61	\$247	\$247	97.8%	96.3%	227	108	6.5
Mar '19	30	21	\$512K	\$448K	\$543K	\$531K	64	74	\$246	\$251	96.9%	95.7%	179	92	6.0
Feb '19	14	21	\$357K	\$464K	\$503K	\$546K	87	74	\$248	\$261	94.1%	96.3%	145	66	10.4
Jan '19	19	25	\$475K	\$527K	\$546K	\$581K	70	63	\$260	\$275	96.2%	97.6%	133	59	7.0

© 2021. Based on information from Garden State MLS, LLC for the period of January 2018 through December 2021. Due to MLS reporting methods and allowable reporting policy, this data is only informational and may not be completely accurate. Data maintained by the MLS may not reflect all real estate activity in the market.



CHERIE
BERGER
TEAM



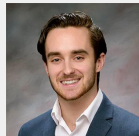
Cherie Berger
cherie.berger@compass.com
M: 908.410.0931



Steven Berger
steven.berger@compass.com
M: 908.256.0307



Ashley Berger-Freitas
ashley.freitas@compass.com
M: 908.432.9818



Anthony Schenone
anthony.schenone@compass.com
M: 908.967.8925

Compass makes no representations or warranties, express or implied, with respect to future market conditions or prices of residential product at the time the subject property or any competitive property is complete and ready for occupancy or with respect to any report, study, finding, recommendation or other information provided by Compass herein. Moreover, no warranty, express or implied, is made or should be assumed regarding the accuracy, adequacy, completeness, legality, reliability, merchantability or fitness for a particular purpose of any information, in part or whole, contained herein. All material is presented with the understanding that Compass shall not be deemed to provide legal, accounting or other professional services. This is not intended to solicit the purchase or sale of any property. Any and all such warranties are hereby expressly disclaimed. Equal Housing Opportunity.

© Compass. All Rights Reserved. This information may not be copied, used or distributed without Compass' consent.