



COMPASS

Queens Luxury Report

Jun 15 - 22, 2026, Residential Contracts \$1.25M+

Photo: [162-04 12th Road](#)

The Queens luxury real estate market, defined as all properties priced \$1.25M and above, saw 16 contracts signed this week, made up of 5 condos, and 11 houses. The previous week saw 24 deals. For more information or data, please reach out to a Compass agent.

\$1,710,750

Average Asking Price

\$1,574,000

Median Asking Price

\$993

Average PPSF

2%

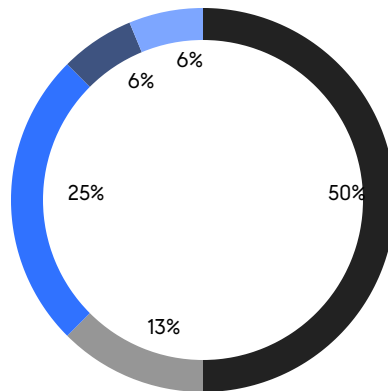
Average Discount

\$27,372,000

Total Volume

71

Average Days On Market



5

Condo Deal(s)

0

Co-op Deal(s)

11

Single-Family Deal(s)

\$1,803,400

Average Asking Price

\$0

Average Asking Price

\$1,668,637

Average Asking Price

\$1,875,000

Median Asking Price

\$0

Median Asking Price

\$1,399,000

Median Asking Price

\$1,406

Average PPSF

\$806

Average PPSF

1,333

Average SqFt

2,129

Average SqFt

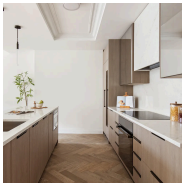


43-20 Glenwood Street

Little Neck

Contract Signed

Type	House	Price	\$2,480,000	Sq. Ft.	2,846	Beds	4
DOM	54	Initial	\$2,480,000	PPSF	\$872	Baths	5

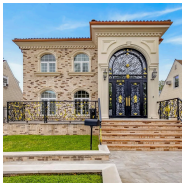


78-29 Austin Street, Unit TH11

Forest Hills

Contract Signed

Type	Condo	Price	\$2,199,000	Sq. Ft.	2,116	Beds	3
DOM	-	Initial	\$2,199,000	PPSF	\$1,040	Baths	3

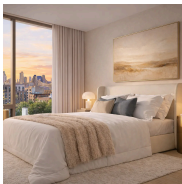


23-74 207th Street

Clearview

Contract Signed

Type	House	Price	\$2,190,000	Sq. Ft.	2,166	Beds	4
DOM	13	Initial	\$2,190,000	PPSF	\$1,012	Baths	3

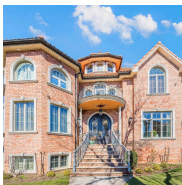


11-50 45th Road, Unit PHD

Long Island City

Contract Signed

Type	Condo	Price	\$2,095,000	Sq. Ft.	1,209	Beds	2
DOM	5	Initial	\$2,095,000	PPSF	\$1,733	Baths	2



160-03 Cryders Lane

Beechhurst

Contract Signed

Type	House	Price	\$2,080,000	Sq. Ft.	3,008	Beds	4
DOM	98	Initial	\$2,080,000	PPSF	\$692	Baths	5



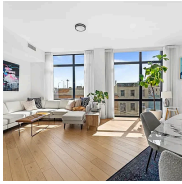
81-22 Haddon Street

Jamaica Estates

Contract Signed

Type	House	Price	\$1,995,000	Sq. Ft.	3,277	Beds	6
DOM	202	Initial	\$2,095,000	PPSF	\$609	Baths	3

Compass is a licensed real estate broker and abides by Equal Housing Opportunity laws. All material presented herein is intended for informational purposes only. Information is compiled from sources deemed reliable but is subject to errors, omissions, changes in price, condition, sale, or withdrawal without notice. No statement is made as to the accuracy of any description. All measurements and square footages are approximate. This is not intended to solicit property already listed. Nothing herein shall be construed as legal, accounting or other professional advice outside the realm of real estate brokerage.

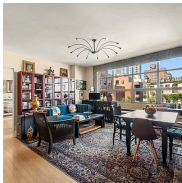


10-64 Jackson Avenue, Unit 2A

Long Island City

Contract Signed

Type	Condo	Price	\$1,875,000	Sq. Ft.	1,360	Beds	3
DOM	68	Initial	\$1,975,000	PPSF	\$1,379	Baths	2



5-09 48th Avenue, Unit 4Q

Long Island City

Contract Signed

Type	Condo	Price	\$1,598,000	Sq. Ft.	1,106	Beds	2
DOM	34	Initial	\$1,598,000	PPSF	\$1,445	Baths	2



144 Beach 93rd Street

Rockaway Beach

Contract Signed

Type	House	Price	\$1,550,000	Sq. Ft.	2,052	Beds	4
DOM	26	Initial	\$1,995,000	PPSF	\$756	Baths	3



26-04 211th Street

Bayside

Contract Signed

Type	House	Price	\$1,399,000	Sq. Ft.	1,900	Beds	4
DOM	37	Initial	\$1,399,000	PPSF	\$737	Baths	2



67-100 Dartmouth Street

Forest Hills

Contract Signed

Type	House	Price	\$1,388,000	Sq. Ft.	2,039	Beds	3
DOM	77	Initial	\$1,448,000	PPSF	\$681	Baths	2



23-55 205th Street

Clearview

Contract Signed

Type	House	Price	\$1,388,000	Sq. Ft.	1,600	Beds	3
DOM	14	Initial	\$1,388,000	PPSF	\$868	Baths	2

Compass is a licensed real estate broker and abides by Equal Housing Opportunity laws. All material presented herein is intended for informational purposes only. Information is compiled from sources deemed reliable but is subject to errors, omissions, changes in price, condition, sale, or withdrawal without notice. No statement is made as to the accuracy of any description. All measurements and square footages are approximate. This is not intended to solicit property already listed. Nothing herein shall be construed as legal, accounting or other professional advice outside the realm of real estate brokerage.



144-36 73rd Avenue

Kew Gardens Hills

Contract Signed

Type	House	Price	\$1,299,000	Sq. Ft.	1,224	Beds	3
DOM	31	Initial	\$1,299,000	PPSF	\$1,062	Baths	2



215-18 48th Avenue

Bayside

Contract Signed

Type	House	Price	\$1,298,000	Sq. Ft.	1,600	Beds	3
DOM	79	Initial	\$1,298,000	PPSF	\$812	Baths	1.5



25-07 148th Street

Flushing

Contract Signed

Type	House	Price	\$1,288,000	Sq. Ft.	1,704	Beds	4
DOM	19	Initial	\$1,288,000	PPSF	\$756	Baths	2



31-16 21st Street, Unit PH2D

Astoria

Contract Signed

Type	Condo	Price	\$1,250,000	Sq. Ft.	873	Beds	2
DOM	299	Initial	\$1,250,000	PPSF	\$1,432	Baths	2

Compass is a licensed real estate broker and abides by Equal Housing Opportunity laws. All material presented herein is intended for informational purposes only. Information is compiled from sources deemed reliable but is subject to errors, omissions, changes in price, condition, sale, or withdrawal without notice. No statement is made as to the accuracy of any description. All measurements and square footages are approximate. This is not intended to solicit property already listed. Nothing herein shall be construed as legal, accounting or other professional advice outside the realm of real estate brokerage.