



COMPASS

# Queens Luxury Report

Jun 08 - 14, 2026, Residential Contracts \$1.25M+

Photo: [162-04 12th Road](#)

The Queens luxury real estate market, defined as all properties priced \$1.25M and above, saw 24 contracts signed this week, made up of 3 condos, and 21 houses. The previous week saw 13 deals. For more information or data, please reach out to a Compass agent.

**\$1,561,830**

Average Asking Price

**\$1,394,000**

Median Asking Price

**\$814**

Average PPSF

**3%**

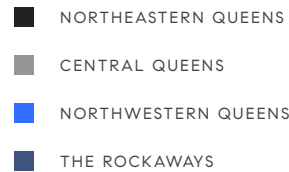
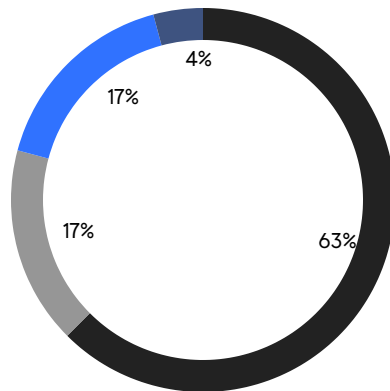
Average Discount

**\$37,483,898**

Total Volume

**100**

Average Days On Market



**3**

Condo Deal(s)

**0**

Co-op Deal(s)

**21**

Single-Family Deal(s)

**\$1,474,667**

Average Asking Price

**\$0**

Average Asking Price

**\$1,574,281**

Average Asking Price

**\$1,325,000**

Median Asking Price

**\$0**

Median Asking Price

**\$1,398,000**

Median Asking Price

**\$1,280**

Average PPSF

**\$744**

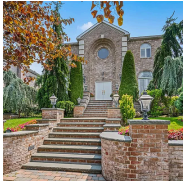
Average PPSF

**1,174**

Average SqFt

**2,299**

Average SqFt



### 6 Summit Place

Malba

Contract Signed

Type	House	Price	\$2,850,000	Sq. Ft.	4,800	Beds	6
DOM	488	Initial	\$3,388,000	PPSF	\$594	Baths	6.5

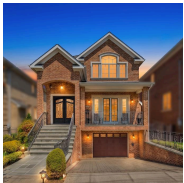


### 165-15 Cross Island Parkway

Beechhurst

Contract Signed

Type	House	Price	\$2,450,000	Sq. Ft.	3,817	Beds	6
DOM	235	Initial	\$2,450,000	PPSF	\$642	Baths	6

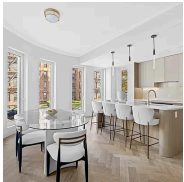


### 33-9 150th Street

Whitestone

Contract Signed

Type	House	Price	\$1,999,000	Sq. Ft.	3,000	Beds	4
DOM	28	Initial	\$1,999,000	PPSF	\$667	Baths	3

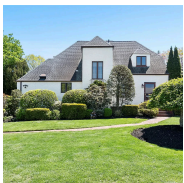


### 78-29 Austin Street, Unit 502

Forest Hills

Contract Signed

Type	Condo	Price	\$1,799,000	Sq. Ft.	1,565	Beds	3
DOM	294	Initial	\$1,887,900	PPSF	\$1,150	Baths	2

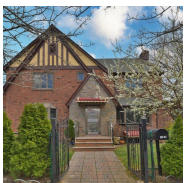


### 214-20 26th Avenue

Bay Terrace

Contract Signed

Type	House	Price	\$1,799,000	Sq. Ft.	2,500	Beds	4
DOM	40	Initial	\$1,799,000	PPSF	\$720	Baths	2



### 42-19 219th Street

Bayside

Contract Signed

Type	House	Price	\$1,680,000	Sq. Ft.	1,948	Beds	4
DOM	57	Initial	\$1,680,000	PPSF	\$863	Baths	3

Compass is a licensed real estate broker and abides by Equal Housing Opportunity laws. All material presented herein is intended for informational purposes only. Information is compiled from sources deemed reliable but is subject to errors, omissions, changes in price, condition, sale, or withdrawal without notice. No statement is made as to the accuracy of any description. All measurements and square footages are approximate. This is not intended to solicit property already listed. Nothing herein shall be construed as legal, accounting or other professional advice outside the realm of real estate brokerage.



### 21-45 74th Street

Astoria

Contract Signed

Type	House	Price	\$1,675,000	Sq. Ft.	2,080	Beds	4
DOM	71	Initial	\$1,750,000	PPSF	\$806	Baths	3



### 151-52 21st Avenue

Whitestone

Contract Signed

Type	House	Price	\$1,550,000	Sq. Ft.	2,276	Beds	4
DOM	77	Initial	\$1,888,000	PPSF	\$682	Baths	3



### 213-06 Richland Avenue

Oakland Gardens

Contract Signed

Type	House	Price	\$1,499,000	Sq. Ft.	1,755	Beds	4
DOM	57	Initial	\$1,499,000	PPSF	\$855	Baths	2



### 28-18 200th Street

Auburndale

Contract Signed

Type	House	Price	\$1,495,000	Sq. Ft.	1,924	Beds	3
DOM	48	Initial	\$1,548,888	PPSF	\$778	Baths	3.5

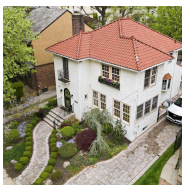


### 132-06 Rockaway Beach Boulevard

Belle Harbor

Contract Signed

Type	House	Price	\$1,398,000	Sq. Ft.	3,809	Beds	7
DOM	144	Initial	\$1,598,000	PPSF	\$368	Baths	5



### 27-25 168th Street

Flushing

Contract Signed

Type	House	Price	\$1,398,000	Sq. Ft.	1,430	Beds	3
DOM	33	Initial	\$1,398,000	PPSF	\$978	Baths	2

Compass is a licensed real estate broker and abides by Equal Housing Opportunity laws. All material presented herein is intended for informational purposes only. Information is compiled from sources deemed reliable but is subject to errors, omissions, changes in price, condition, sale, or withdrawal without notice. No statement is made as to the accuracy of any description. All measurements and square footages are approximate. This is not intended to solicit property already listed. Nothing herein shall be construed as legal, accounting or other professional advice outside the realm of real estate brokerage.



### 85-22 218th Street

Oakland Gardens

Contract Signed

Type	House	Price	\$1,390,000	Sq. Ft.	1,796	Beds	3
DOM	13	Initial	\$1,390,000	PPSF	\$774	Baths	1



### 65-47 169th Street

Flushing Heights

Contract Signed

Type	House	Price	\$1,380,000	Sq. Ft.	1,360	Beds	4
DOM	44	Initial	\$1,380,000	PPSF	\$1,015	Baths	3

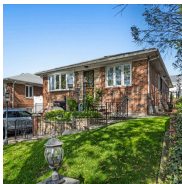


### 23-25 24th Street

Astoria

Contract Signed

Type	House	Price	\$1,375,000	Sq. Ft.	1,344	Beds	3
DOM	29	Initial	\$1,375,000	PPSF	\$1,024	Baths	2

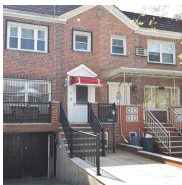


### 14-85 166th Street

Beechhurst

Contract Signed

Type	House	Price	\$1,349,898	Sq. Ft.	2,016	Beds	3
DOM	27	Initial	\$1,349,898	PPSF	\$670	Baths	3

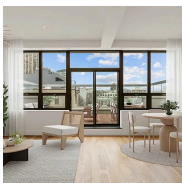


### 105-48 65th Road

Forest Hills

Contract Signed

Type	House	Price	\$1,349,000	Sq. Ft.	1,862	Beds	3
DOM	52	Initial	\$1,349,000	PPSF	\$725	Baths	2



### 5-12 51st Avenue, Unit 4

Long Island City

Contract Signed

Type	Condo	Price	\$1,325,000	Sq. Ft.	1,016	Beds	2
DOM	89	Initial	\$1,325,000	PPSF	\$1,305	Baths	1

Compass is a licensed real estate broker and abides by Equal Housing Opportunity laws. All material presented herein is intended for informational purposes only. Information is compiled from sources deemed reliable but is subject to errors, omissions, changes in price, condition, sale, or withdrawal without notice. No statement is made as to the accuracy of any description. All measurements and square footages are approximate. This is not intended to solicit property already listed. Nothing herein shall be construed as legal, accounting or other professional advice outside the realm of real estate brokerage.



### 40-21 27th Street, Unit 5W

Astoria

Contract Signed

Type	Condo	Price	\$1,300,000	Sq. Ft.	939	Beds	2
DOM	70	Initial	\$1,300,000	PPSF	\$1,385	Baths	2



### 34-32 84th Street

Jackson Heights

Contract Signed

Type	House	Price	\$1,299,000	Sq. Ft.	2,694	Beds	4
DOM	36	Initial	\$1,299,000	PPSF	\$483	Baths	2



### 331 Richmond Road

Douglaston

Contract Signed

Type	House	Price	\$1,298,000	Sq. Ft.	2,174	Beds	5
DOM	192	Initial	\$1,498,000	PPSF	\$598	Baths	1



### 43-67 169th Street

Flushing

Contract Signed

Type	House	Price	\$1,288,000	Sq. Ft.	2,164	Beds	7
DOM	28	Initial	\$1,288,000	PPSF	\$596	Baths	2



### 219-01 82nd Avenue

Oakland Gardens

Contract Signed

Type	House	Price	\$1,288,000	Sq. Ft.	-	Beds	4
DOM	75	Initial	\$1,399,000	PPSF	-	Baths	3



### 30-11 149th Street

Flushing

Contract Signed

Type	House	Price	\$1,250,000	Sq. Ft.	1,213	Beds	2
DOM	160	Initial	\$1,375,000	PPSF	\$1,031	Baths	2

Compass is a licensed real estate broker and abides by Equal Housing Opportunity laws. All material presented herein is intended for informational purposes only. Information is compiled from sources deemed reliable but is subject to errors, omissions, changes in price, condition, sale, or withdrawal without notice. No statement is made as to the accuracy of any description. All measurements and square footages are approximate. This is not intended to solicit property already listed. Nothing herein shall be construed as legal, accounting or other professional advice outside the realm of real estate brokerage.