



COMPASS

# Queens Luxury Report

Jun 01 - 07, 2026, Residential Contracts \$1.25M+

Photo: [162-04 12th Road](#)

The Queens luxury real estate market, defined as all properties priced \$1.25M and above, saw 13 contracts signed this week, made up of 4 condos, and 9 houses. The previous week saw 16 deals. For more information or data, please reach out to a Compass agent.

**\$1,595,748**

Average Asking Price

**\$1,425,000**

Median Asking Price

**\$1,069**

Average PPSF

**0%**

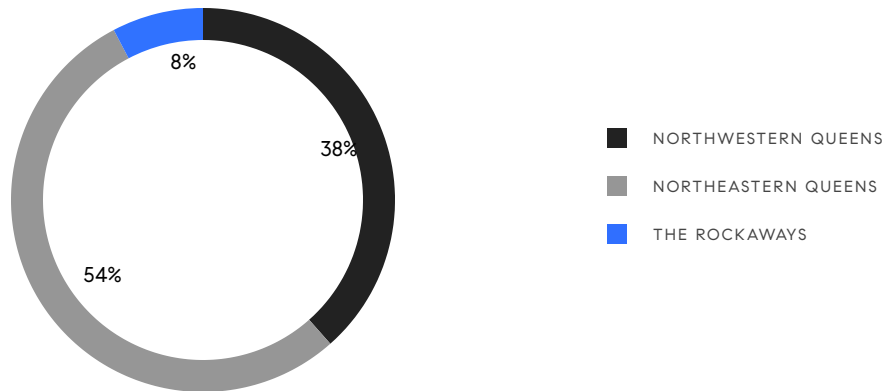
Average Discount

**\$20,744,716**

Total Volume

**67**

Average Days On Market



**4**

Condo Deal(s)

**0**

Co-op Deal(s)

**9**

Single-Family Deal(s)

**\$1,884,929**

Average Asking Price

**\$0**

Average Asking Price

**\$1,467,223**

Average Asking Price

**\$1,662,978**

Median Asking Price

**\$0**

Median Asking Price

**\$1,375,000**

Median Asking Price

**\$1,696**

Average PPSF

**\$790**

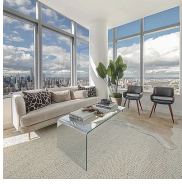
Average PPSF

**1,166**

Average SqFt

**1,923**

Average SqFt



### 3 Court Square, Unit PH309

Long Island City

Contract Signed

Type	Condo	Price	\$2,918,761	Sq. Ft.	965	Beds	2
DOM	226	Initial	\$2,918,761	PPSF	\$3,025	Baths	2

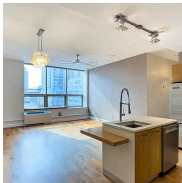


### 29-34 146th Street

Flushing

Contract Signed

Type	House	Price	\$2,250,000	Sq. Ft.	3,600	Beds	7
DOM	29	Initial	\$2,250,000	PPSF	\$625	Baths	5

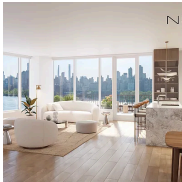


### 2-17 51st Avenue, Unit 404

Long Island City

Contract Signed

Type	Condo	Price	\$1,688,000	Sq. Ft.	1,281	Beds	2
DOM	104	Initial	\$1,688,000	PPSF	\$1,318	Baths	2

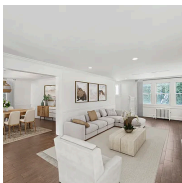


### 30-55 Vernon Boulevard, Unit 6H

Astoria

Contract Signed

Type	Condo	Price	\$1,637,955	Sq. Ft.	1,167	Beds	2
DOM	97	Initial	\$1,637,955	PPSF	\$1,404	Baths	2



### 334 Beach 146th Street

Neponsit

Contract Signed

Type	House	Price	\$1,525,000	Sq. Ft.	1,920	Beds	4
DOM	103	Initial	\$1,525,000	PPSF	\$795	Baths	2



### 75-28 170th Street

Hillcrest

Contract Signed

Type	House	Price	\$1,499,000	Sq. Ft.	2,052	Beds	4
DOM	9	Initial	\$1,499,000	PPSF	\$731	Baths	3

Compass is a licensed real estate broker and abides by Equal Housing Opportunity laws. All material presented herein is intended for informational purposes only. Information is compiled from sources deemed reliable but is subject to errors, omissions, changes in price, condition, sale, or withdrawal without notice. No statement is made as to the accuracy of any description. All measurements and square footages are approximate. This is not intended to solicit property already listed. Nothing herein shall be construed as legal, accounting or other professional advice outside the realm of real estate brokerage.



### 45-10 39th Avenue

Sunnyside

Contract Signed

Type	House	Price	\$1,425,000	Sq. Ft.	1,720	Beds	2
DOM	27	Initial	\$1,425,000	PPSF	\$829	Baths	2



### 150-61 32nd Avenue

Flushing

Contract Signed

Type	House	Price	\$1,375,000	Sq. Ft.	1,636	Beds	3
DOM	9	Initial	\$1,375,000	PPSF	\$841	Baths	2

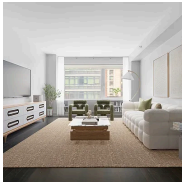


### 64-08 213th Street

Oakland Gardens

Contract Signed

Type	House	Price	\$1,348,000	Sq. Ft.	1,296	Beds	3
DOM	119	Initial	\$1,388,000	PPSF	\$1,041	Baths	3



### 44-27 Purves Street, Unit 4A

Long Island City

Contract Signed

Type	Condo	Price	\$1,295,000	Sq. Ft.	1,250	Beds	2
DOM	56	Initial	\$1,295,000	PPSF	\$1,036	Baths	2



### 154-04 14th Avenue

Beechhurst

Contract Signed

Type	House	Price	\$1,275,000	Sq. Ft.	1,850	Beds	3
DOM	16	Initial	\$1,275,000	PPSF	\$690	Baths	3



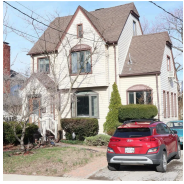
### 75-19 171st Street

Hillcrest

Contract Signed

Type	House	Price	\$1,258,000	Sq. Ft.	1,656	Beds	4
DOM	7	Initial	\$1,258,000	PPSF	\$760	Baths	2

Compass is a licensed real estate broker and abides by Equal Housing Opportunity laws. All material presented herein is intended for informational purposes only. Information is compiled from sources deemed reliable but is subject to errors, omissions, changes in price, condition, sale, or withdrawal without notice. No statement is made as to the accuracy of any description. All measurements and square footages are approximate. This is not intended to solicit property already listed. Nothing herein shall be construed as legal, accounting or other professional advice outside the realm of real estate brokerage.



### 33-35 150th Place

Flushing

Contract Signed

Type	House	Price	\$1,250,000	Sq. Ft.	1,575	Beds	3
DOM	64	Initial	\$1,250,000	PPSF	\$794	Baths	1

Compass is a licensed real estate broker and abides by Equal Housing Opportunity laws. All material presented herein is intended for informational purposes only. Information is compiled from sources deemed reliable but is subject to errors, omissions, changes in price, condition, sale, or withdrawal without notice. No statement is made as to the accuracy of any description. All measurements and square footages are approximate. This is not intended to solicit property already listed. Nothing herein shall be construed as legal, accounting or other professional advice outside the realm of real estate brokerage.

© 2026 Compass. This report and information provided in this report are proprietary to Compass and may not be sold, used or reprinted, in whole or part, without the prior written consent in each instance of Compass. Data is subject to revision. Sourced from Compass proprietary database. All rights reserved.

compass.com