



COMPASS

Queens Luxury Report

Apr 27 - May 03, 2026, Residential Contracts \$1.25M+

Photo: [22-18 Jackson Avenue, Unit 719](#)

The Queens luxury real estate market, defined as all properties priced \$1.25M and above, saw 18 contracts signed this week, made up of 3 condos, and 15 houses. The previous week saw 16 deals. For more information or data, please reach out to a Compass agent.

\$1,527,457

Average Asking Price

\$1,468,000

Median Asking Price

\$852

Average PPSF

0%

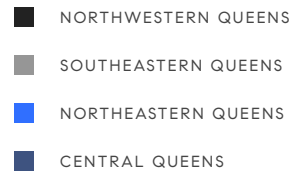
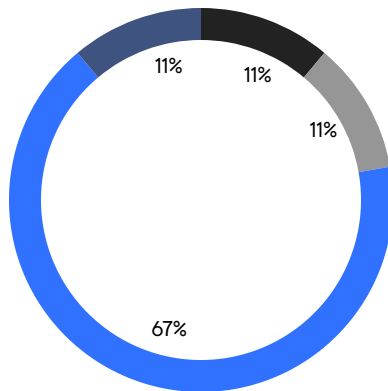
Average Discount

\$27,494,224

Total Volume

42

Average Days On Market



3

Condo Deal(s)

0

Co-op Deal(s)

15

Single-Family Deal(s)

\$1,588,224

Average Asking Price

\$0

Average Asking Price

\$1,515,304

Average Asking Price

\$1,309,670

Median Asking Price

\$0

Median Asking Price

\$1,498,000

Median Asking Price

\$1,377

Average PPSF

\$747

Average PPSF

1,142

Average SqFt

2,230

Average SqFt



27-28 Thomson Avenue, Unit 816

Long Island City

Contract Signed

Type	Condo	Price	\$2,180,000	Sq. Ft.	1,361	Beds	1
DOM	45	Initial	\$2,180,000	PPSF	\$1,602	Baths	2



88-35 193rd Street

Hollis

Contract Signed

Type	House	Price	\$2,000,000	Sq. Ft.	3,962	Beds	5
DOM	13	Initial	\$2,000,000	PPSF	\$505	Baths	3



915 Malba Drive

Whitestone

Contract Signed

Type	House	Price	\$1,999,000	Sq. Ft.	2,660	Beds	4
DOM	154	Initial	\$1,999,000	PPSF	\$752	Baths	3



4122 169th Street

Flushing

Contract Signed

Type	House	Price	\$1,699,000	Sq. Ft.	2,743	Beds	5
DOM	35	Initial	\$1,699,000	PPSF	\$620	Baths	4

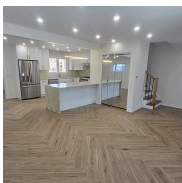


21-38 49th Street

Astoria

Contract Signed

Type	House	Price	\$1,579,000	Sq. Ft.	1,350	Beds	4
DOM	55	Initial	\$1,579,000	PPSF	\$1,170	Baths	4



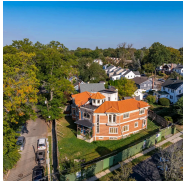
73-30 181st Street

Utopia

Contract Signed

Type	House	Price	\$1,575,555	Sq. Ft.	2,000	Beds	3
DOM	86	Initial	\$1,550,000	PPSF	\$788	Baths	2.5

Compass is a licensed real estate broker and abides by Equal Housing Opportunity laws. All material presented herein is intended for informational purposes only. Information is compiled from sources deemed reliable but is subject to errors, omissions, changes in price, condition, sale, or withdrawal without notice. No statement is made as to the accuracy of any description. All measurements and square footages are approximate. This is not intended to solicit property already listed. Nothing herein shall be construed as legal, accounting or other professional advice outside the realm of real estate brokerage.



254-04 West End Drive

Little Neck

Contract Signed

Type	House	Price	\$1,568,000	Sq. Ft.	4,864	Beds	5
DOM	21	Initial	\$1,568,000	PPSF	\$323	Baths	4



53-63 63rd Street

Maspeth

Contract Signed

Type	House	Price	\$1,498,000	Sq. Ft.	1,640	Beds	4
DOM	21	Initial	\$1,498,000	PPSF	\$914	Baths	4



50-12 194th Street

Auburndale

Contract Signed

Type	House	Price	\$1,498,000	Sq. Ft.	2,000	Beds	5
DOM	14	Initial	\$1,498,000	PPSF	\$749	Baths	4

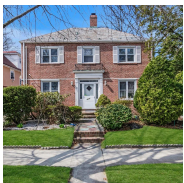


25-28 148th Street

Flushing

Contract Signed

Type	House	Price	\$1,438,000	Sq. Ft.	1,950	Beds	4
DOM	18	Initial	\$1,438,000	PPSF	\$738	Baths	3

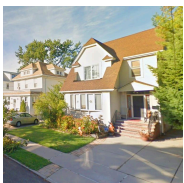


84-16 Charlecote Ridge

Jamaica Estates

Contract Signed

Type	House	Price	\$1,399,000	Sq. Ft.	2,030	Beds	4
DOM	28	Initial	\$1,399,000	PPSF	\$690	Baths	4



43-28 168th Street

Flushing

Contract Signed

Type	House	Price	\$1,340,000	Sq. Ft.	1,800	Beds	5
DOM	81	Initial	\$1,340,000	PPSF	\$745	Baths	3

Compass is a licensed real estate broker and abides by Equal Housing Opportunity laws. All material presented herein is intended for informational purposes only. Information is compiled from sources deemed reliable but is subject to errors, omissions, changes in price, condition, sale, or withdrawal without notice. No statement is made as to the accuracy of any description. All measurements and square footages are approximate. This is not intended to solicit property already listed. Nothing herein shall be construed as legal, accounting or other professional advice outside the realm of real estate brokerage.



138-18 Northern Boulevard, Unit PH2C

Contract Signed

Flushing

Type	Condo	Price	\$1,309,670	Sq. Ft.	942	Beds	2
DOM	6	Initial	\$1,309,670	PPSF	\$1,391	Baths	2

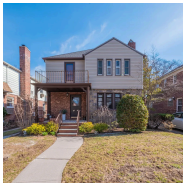


65-11 168th Street

Contract Signed

Flushing

Type	House	Price	\$1,299,999	Sq. Ft.	1,460	Beds	4
DOM	50	Initial	\$1,350,888	PPSF	\$891	Baths	3



73-63 195th Street

Contract Signed

Fresh Meadows

Type	House	Price	\$1,288,000	Sq. Ft.	1,768	Beds	4
DOM	15	Initial	\$1,288,000	PPSF	\$729	Baths	1

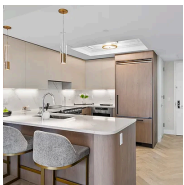


33-26 155th Street

Contract Signed

Flushing

Type	House	Price	\$1,280,000	Sq. Ft.	1,616	Beds	3
DOM	22	Initial	\$1,280,000	PPSF	\$793	Baths	2

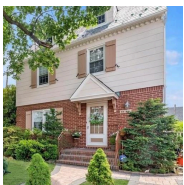


78-29 Austin Street, Unit 201

Contract Signed

Forest Hills

Type	Condo	Price	\$1,275,000	Sq. Ft.	1,121	Beds	2
DOM	-	Initial	\$1,275,000	PPSF	\$1,138	Baths	2



51-06 216th Street

Contract Signed

Bayside

Type	House	Price	\$1,268,000	Sq. Ft.	1,600	Beds	3
DOM	48	Initial	\$1,268,000	PPSF	\$793	Baths	1

Compass is a licensed real estate broker and abides by Equal Housing Opportunity laws. All material presented herein is intended for informational purposes only. Information is compiled from sources deemed reliable but is subject to errors, omissions, changes in price, condition, sale, or withdrawal without notice. No statement is made as to the accuracy of any description. All measurements and square footages are approximate. This is not intended to solicit property already listed. Nothing herein shall be construed as legal, accounting or other professional advice outside the realm of real estate brokerage.