



COMPASS

Queens Luxury Report

Mar 23 - 29, 2026, Residential Contracts \$1.25M+

Photo: [16-35 Hancock Street](#)

The Queens luxury real estate market, defined as all properties priced \$1.25M and above, saw 11 contracts signed this week, made up of 3 condos, and 8 houses. The previous week saw 13 deals. For more information or data, please reach out to a Compass agent.

\$1,595,455

Average Asking Price

\$1,499,000

Median Asking Price

\$913

Average PPSF

1%

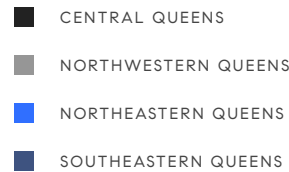
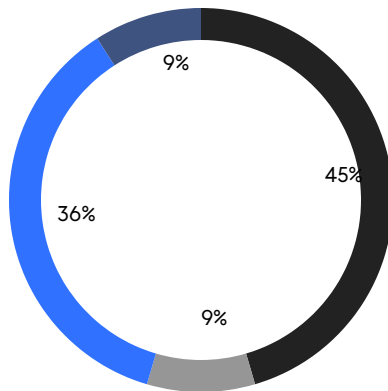
Average Discount

\$17,550,000

Total Volume

51

Average Days On Market



3

Condo Deal(s)

0

Co-op Deal(s)

8

Single-Family Deal(s)

\$1,525,000

Average Asking Price

\$0

Average Asking Price

\$1,621,875

Average Asking Price

\$1,580,000

Median Asking Price

\$0

Median Asking Price

\$1,499,000

Median Asking Price

\$1,300

Average PPSF

\$748

Average PPSF

1,215

Average SqFt

2,183

Average SqFt



70-51 Juno Street

Forest Hills

Contract Signed

Type	House	Price	\$2,199,000	Sq. Ft.	2,233	Beds	4
DOM	19	Initial	\$2,199,000	PPSF	\$985	Baths	3.5



116-33 Union Turnpike

Forest Hills

Contract Signed

Type	House	Price	\$1,998,000	Sq. Ft.	2,472	Beds	5
DOM	124	Initial	\$2,298,000	PPSF	\$809	Baths	3

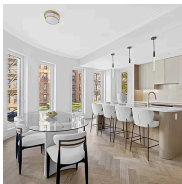


8 Whitson Street

Forest Hills

Contract Signed

Type	House	Price	\$1,780,000	Sq. Ft.	-	Beds	4
DOM	4	Initial	\$1,780,000	PPSF	-	Baths	3

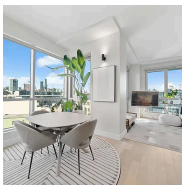


78-29 Austin Street, Unit 202

Forest Hills

Contract Signed

Type	Condo	Price	\$1,695,000	Sq. Ft.	1,551	Beds	3
DOM	139	Initial	\$1,695,000	PPSF	\$1,093	Baths	2

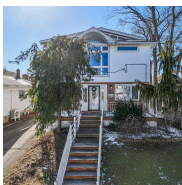


22-43 Jackson Avenue, Unit 6B

Long Island City

Contract Signed

Type	Condo	Price	\$1,580,000	Sq. Ft.	944	Beds	2
DOM	56	Initial	\$1,580,000	PPSF	\$1,674	Baths	2



157-40 9th Avenue

Beechhurst

Contract Signed

Type	House	Price	\$1,499,000	Sq. Ft.	2,336	Beds	5
DOM	44	Initial	\$1,499,000	PPSF	\$642	Baths	3

Compass is a licensed real estate broker and abides by Equal Housing Opportunity laws. All material presented herein is intended for informational purposes only. Information is compiled from sources deemed reliable but is subject to errors, omissions, changes in price, condition, sale, or withdrawal without notice. No statement is made as to the accuracy of any description. All measurements and square footages are approximate. This is not intended to solicit property already listed. Nothing herein shall be construed as legal, accounting or other professional advice outside the realm of real estate brokerage.



85-26 Palo Alto Street

Holliswood Jamaica

Contract Signed

Type	House	Price	\$1,499,000	Sq. Ft.	1,893	Beds	4
DOM	1	Initial	\$1,499,000	PPSF	\$792	Baths	4



16023 23rd Avenue

Flushing

Contract Signed

Type	House	Price	\$1,400,000	Sq. Ft.	2,400	Beds	4
DOM	5	Initial	\$1,400,000	PPSF	\$584	Baths	3



42-60 248 Street

Little Neck

Contract Signed

Type	House	Price	\$1,350,000	Sq. Ft.	1,484	Beds	5
DOM	1	Initial	\$1,350,000	PPSF	\$910	Baths	3

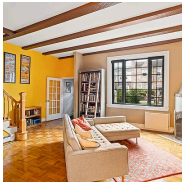


138-35 39th Avenue, Unit 16K

Flushing

Contract Signed

Type	Condo	Price	\$1,300,000	Sq. Ft.	1,149	Beds	2
DOM	123	Initial	\$1,359,000	PPSF	\$1,132	Baths	2



30-22 88th Street

Jackson Heights

Contract Signed

Type	House	Price	\$1,250,000	Sq. Ft.	2,462	Beds	3
DOM	39	Initial	\$1,250,000	PPSF	\$508	Baths	2.5

Compass is a licensed real estate broker and abides by Equal Housing Opportunity laws. All material presented herein is intended for informational purposes only. Information is compiled from sources deemed reliable but is subject to errors, omissions, changes in price, condition, sale, or withdrawal without notice. No statement is made as to the accuracy of any description. All measurements and square footages are approximate. This is not intended to solicit property already listed. Nothing herein shall be construed as legal, accounting or other professional advice outside the realm of real estate brokerage.