



COMPASS

Queens Luxury Report

Mar 16 - 22, 2026, Residential Contracts \$1.25M+

Photo: [16-35 Hancock Street](#)

The Queens luxury real estate market, defined as all properties priced \$1.25M and above, saw 13 contracts signed this week, made up of 4 condos, and 9 houses. The previous week saw 14 deals. For more information or data, please reach out to a Compass agent.

\$1,514,916

Average Asking Price

\$1,388,000

Median Asking Price

\$911

Average PPSF

2%

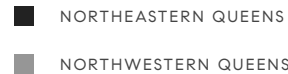
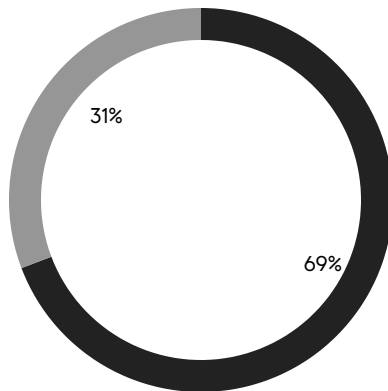
Average Discount

\$19,693,900

Total Volume

88

Average Days On Market



4

Condo Deal(s)

0

Co-op Deal(s)

9

Single-Family Deal(s)

\$1,509,500

Average Asking Price

\$0

Average Asking Price

\$1,517,323

Average Asking Price

\$1,369,000

Median Asking Price

\$0

Median Asking Price

\$1,388,000

Median Asking Price

\$1,318

Average PPSF

\$730

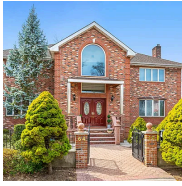
Average PPSF

1,217

Average SqFt

2,117

Average SqFt

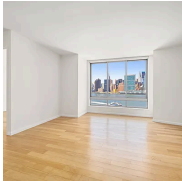


64-16 211th Street

Oakland Gardens

Contract Signed

Type	House	Price	\$2,530,000	Sq. Ft.	3,900	Beds	5
DOM	130	Initial	\$2,680,000	PPSF	\$649	Baths	5



46-30 Center Boulevard, Unit 908

Long Island City

Contract Signed

Type	Condo	Price	\$2,050,000	Sq. Ft.	1,196	Beds	2
DOM	161	Initial	\$2,195,000	PPSF	\$1,715	Baths	2



154-19 24th Avenue

Flushing

Contract Signed

Type	House	Price	\$1,680,000	Sq. Ft.	2,004	Beds	4
DOM	2	Initial	\$1,680,000	PPSF	\$839	Baths	2



14-07 158th Street

Beechhurst

Contract Signed

Type	House	Price	\$1,435,000	Sq. Ft.	2,100	Beds	4
DOM	142	Initial	\$1,485,000	PPSF	\$684	Baths	3



32-24 157th Street

Murray Hill

Contract Signed

Type	House	Price	\$1,398,000	Sq. Ft.	1,800	Beds	4
DOM	108	Initial	\$1,488,000	PPSF	\$777	Baths	2.5



40-22 College Point Boulevard, Unit 10R

Flushing

Contract Signed

Type	Condo	Price	\$1,398,000	Sq. Ft.	1,765	Beds	3
DOM	13	Initial	\$1,398,000	PPSF	\$793	Baths	3

Compass is a licensed real estate broker and abides by Equal Housing Opportunity laws. All material presented herein is intended for informational purposes only. Information is compiled from sources deemed reliable but is subject to errors, omissions, changes in price, condition, sale, or withdrawal without notice. No statement is made as to the accuracy of any description. All measurements and square footages are approximate. This is not intended to solicit property already listed. Nothing herein shall be construed as legal, accounting or other professional advice outside the realm of real estate brokerage.

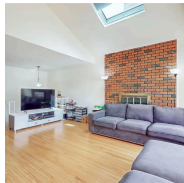


145-67 5th Avenue

Whitestone

Contract Signed

Type	House	Price	\$1,388,000	Sq. Ft.	1,650	Beds	4
DOM	250	Initial	\$1,500,000	PPSF	\$842	Baths	2

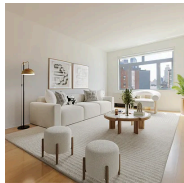


157-11 Cryders Lane

Beechhurst

Contract Signed

Type	House	Price	\$1,350,000	Sq. Ft.	2,224	Beds	4
DOM	14	Initial	\$1,350,000	PPSF	\$608	Baths	3



11-02 49th Avenue, Unit 4E

Long Island City

Contract Signed

Type	Condo	Price	\$1,340,000	Sq. Ft.	1,087	Beds	2
DOM	171	Initial	\$1,350,000	PPSF	\$1,233	Baths	2



75-47 193rd Street

Fresh Meadows

Contract Signed

Type	House	Price	\$1,300,000	Sq. Ft.	1,775	Beds	4
DOM	33	Initial	\$1,300,000	PPSF	\$732	Baths	3

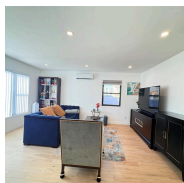


23-23 32nd Street

Astoria

Contract Signed

Type	House	Price	\$1,295,000	Sq. Ft.	1,800	Beds	3
DOM	16	Initial	\$1,295,000	PPSF	\$720	Baths	2



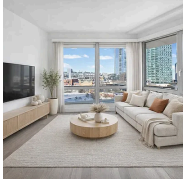
41-75 Morgan Street

Little Neck

Contract Signed

Type	House	Price	\$1,279,900	Sq. Ft.	1,800	Beds	4
DOM	67	Initial	\$1,279,900	PPSF	\$711	Baths	3

Compass is a licensed real estate broker and abides by Equal Housing Opportunity laws. All material presented herein is intended for informational purposes only. Information is compiled from sources deemed reliable but is subject to errors, omissions, changes in price, condition, sale, or withdrawal without notice. No statement is made as to the accuracy of any description. All measurements and square footages are approximate. This is not intended to solicit property already listed. Nothing herein shall be construed as legal, accounting or other professional advice outside the realm of real estate brokerage.



22-43 Jackson Avenue, Unit 5F

Long Island City

Contract Signed

Type	Condo	Price	\$1,250,000	Sq. Ft.	818	Beds	2
DOM	35	Initial	\$1,250,000	PPSF	\$1,529	Baths	2

Compass is a licensed real estate broker and abides by Equal Housing Opportunity laws. All material presented herein is intended for informational purposes only. Information is compiled from sources deemed reliable but is subject to errors, omissions, changes in price, condition, sale, or withdrawal without notice. No statement is made as to the accuracy of any description. All measurements and square footages are approximate. This is not intended to solicit property already listed. Nothing herein shall be construed as legal, accounting or other professional advice outside the realm of real estate brokerage.

© 2026 Compass. This report and information provided in this report are proprietary to Compass and may not be sold, used or reprinted, in whole or part, without the prior written consent in each instance of Compass. Data is subject to revision. Sourced from Compass proprietary database. All rights reserved.

[compass.com](https://www.compass.com)