



COMPASS

# Queens Luxury Report

Nov 17 - 23, 2025, Residential Contracts \$1.25M+

Photo: 147-07 8th Avenue

The Queens luxury real estate market, defined as all properties priced \$1.25M and above, saw 14 contracts signed this week, made up of 3 condos, and 11 houses. The previous week saw 10 deals. For more information or data, please reach out to a Compass agent.

**\$1,475,500**

Average Asking Price

**\$1,396,500**

Median Asking Price

**\$938**

Average PPSF

**2%**

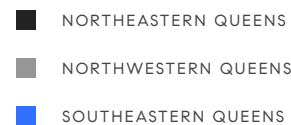
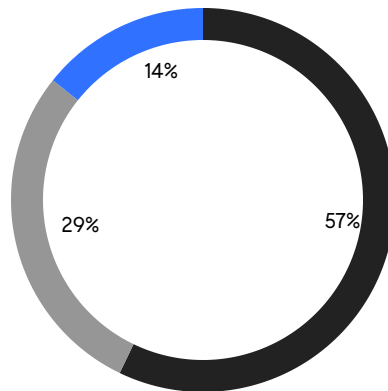
Average Discount

**\$20,657,000**

Total Volume

**54**

Average Days On Market



**3**

Condo Deal(s)

**0**

Co-op Deal(s)

**11**

Single-Family Deal(s)

**\$1,708,334**

Average Asking Price

**\$0**

Average Asking Price

**\$1,412,000**

Average Asking Price

**\$1,760,000**

Median Asking Price

**\$0**

Median Asking Price

**\$1,350,000**

Median Asking Price

**\$1,554**

Average PPSF

**\$769**

Average PPSF

**1,100**

Average SqFt

**2,002**

Average SqFt





### 171-06 76th Avenue

Hillcrest

Contract Signed

Type	House	Price	\$1,888,000	Sq. Ft.	4,288	Beds	3
DOM	80	Initial	\$1,888,000	PPSF	\$441	Baths	3



### 24-01 Queens Plaza North, Unit 1205

Long Island City

Contract Signed

Type	Condo	Price	\$1,775,000	Sq. Ft.	1,105	Beds	2
DOM	-	Initial	-	PPSF	\$1,607	Baths	2



### 24-01 Queens Plaza North, Unit 905

Long Island City

Contract Signed

Type	Condo	Price	\$1,760,000	Sq. Ft.	1,103	Beds	2
DOM	-	Initial	-	PPSF	\$1,596	Baths	2

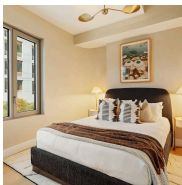


### 51-27 Browvale Lane

Little Neck

Contract Signed

Type	House	Price	\$1,598,000	Sq. Ft.	2,458	Beds	3
DOM	23	Initial	\$1,598,000	PPSF	\$651	Baths	3

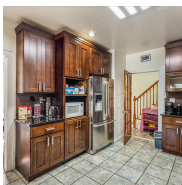


### 24-01 Queens Plaza North, Unit 305

Long Island City

Contract Signed

Type	Condo	Price	\$1,590,000	Sq. Ft.	1,090	Beds	2
DOM	-	Initial	-	PPSF	\$1,459	Baths	2



### 42-11 208th Street

Bayside

Contract Signed

Type	House	Price	\$1,399,000	Sq. Ft.	2,018	Beds	5
DOM	11	Initial	\$1,399,000	PPSF	\$694	Baths	3

Compass is a licensed real estate broker and abides by Equal Housing Opportunity laws. All material presented herein is intended for informational purposes only. Information is compiled from sources deemed reliable but is subject to errors, omissions, changes in price, condition, sale, or withdrawal without notice. No statement is made as to the accuracy of any description. All measurements and square footages are approximate. This is not intended to solicit property already listed. Nothing herein shall be construed as legal, accounting or other professional advice outside the realm of real estate brokerage.



### 47-69 195th Street

Auburndale

Contract Signed

Type	House	Price	\$1,398,000	Sq. Ft.	1,800	Beds	3
DOM	72	Initial	\$1,450,000	PPSF	\$777	Baths	2

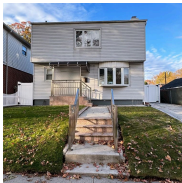


### 180-15 Dalny Road

Jamaica Estates

Contract Signed

Type	House	Price	\$1,395,000	Sq. Ft.	2,112	Beds	3
DOM	37	Initial	\$1,395,000	PPSF	\$661	Baths	3



### 168-07 73rd Avenue

Hillcrest

Contract Signed

Type	House	Price	\$1,350,000	Sq. Ft.	1,404	Beds	3
DOM	5	Initial	\$1,350,000	PPSF	\$962	Baths	2



### 80-50 189th Street

Jamaica Estates

Contract Signed

Type	House	Price	\$1,328,000	Sq. Ft.	1,855	Beds	3
DOM	7	Initial	\$1,328,000	PPSF	\$716	Baths	1



### 32-30 167th Street

Flushing

Contract Signed

Type	House	Price	\$1,300,000	Sq. Ft.	2,088	Beds	5
DOM	-	Initial	\$1,300,000	PPSF	\$623	Baths	1



### 23-74 38th Street

Astoria

Contract Signed

Type	House	Price	\$1,298,000	Sq. Ft.	1,250	Beds	3
DOM	66	Initial	\$1,298,000	PPSF	\$1,039	Baths	2

Compass is a licensed real estate broker and abides by Equal Housing Opportunity laws. All material presented herein is intended for informational purposes only. Information is compiled from sources deemed reliable but is subject to errors, omissions, changes in price, condition, sale, or withdrawal without notice. No statement is made as to the accuracy of any description. All measurements and square footages are approximate. This is not intended to solicit property already listed. Nothing herein shall be construed as legal, accounting or other professional advice outside the realm of real estate brokerage.



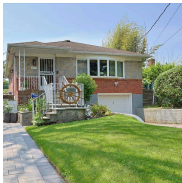


### 208-04 50th Avenue

Bayside

Contract Signed

Type	House	Price	\$1,298,000	Sq. Ft.	1,495	Beds	2
DOM	89	Initial	\$1,298,000	PPSF	\$869	Baths	1



### 50-54 Deepdale Place

Little Neck

Contract Signed

Type	House	Price	\$1,280,000	Sq. Ft.	1,249	Beds	3
DOM	148	Initial	\$1,575,000	PPSF	\$1,025	Baths	3

Compass is a licensed real estate broker and abides by Equal Housing Opportunity laws. All material presented herein is intended for informational purposes only. Information is compiled from sources deemed reliable but is subject to errors, omissions, changes in price, condition, sale, or withdrawal without notice. No statement is made as to the accuracy of any description. All measurements and square footages are approximate. This is not intended to solicit property already listed. Nothing herein shall be construed as legal, accounting or other professional advice outside the realm of real estate brokerage.