



COMPASS

Queens Luxury Report

Nov 10 - 16, 2025, Residential Contracts \$1.25M+

Photo: 147-07 8th Avenue

The Queens luxury real estate market, defined as all properties priced \$1.25M and above, saw 10 contracts signed this week, made up of 2 condos, and 8 houses. The previous week saw 12 deals. For more information or data, please reach out to a Compass agent.

\$1,692,089

Average Asking Price

\$1,374,500

Median Asking Price

\$774

Average PPSF

2%

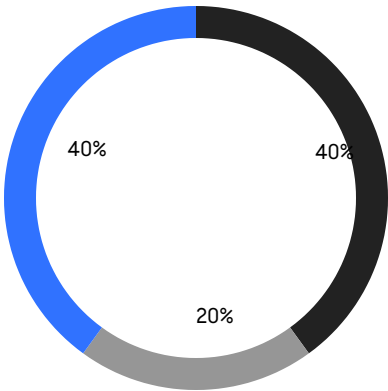
Average Discount

\$16,920,888

Total Volume

100

Average Days On Market



- NORTHEASTERN QUEENS
- NORTHWESTERN QUEENS
- CENTRAL QUEENS

2

Condo Deal(s)

0

Co-op Deal(s)

8

Single-Family Deal(s)

\$1,874,500

Average Asking Price

\$0

Average Asking Price

\$1,646,486

Average Asking Price

\$1,874,500

Median Asking Price

\$0

Median Asking Price

\$1,340,000

Median Asking Price

\$1,293

Average PPSF

\$644

Average PPSF

1,443

Average SqFt

2,686

Average SqFt

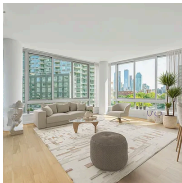


28 Shore Road

Douglaston

Contract Signed

Type	House	Price	\$3,248,000	Sq. Ft.	3,623	Beds	6
DOM	130	Initial	\$3,248,000	PPSF	\$897	Baths	3.5



46-30 Center Boulevard, Unit 401

Long Island City

Contract Signed

Type	Condo	Price	\$2,250,000	Sq. Ft.	1,492	Beds	3
DOM	416	Initial	\$2,395,000	PPSF	\$1,509	Baths	3

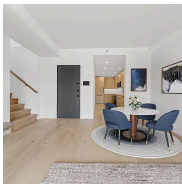


70-33 Kessel Street

Forest Hills

Contract Signed

Type	House	Price	\$1,950,000	Sq. Ft.	2,080	Beds	5
DOM	99	Initial	\$2,100,000	PPSF	\$938	Baths	5.5



12-16 30th Avenue, Unit 201

Astoria

Contract Signed

Type	Condo	Price	\$1,499,000	Sq. Ft.	1,393	Beds	3
DOM	153	Initial	\$1,599,000	PPSF	\$1,077	Baths	2



108-41 64th Road

Forest Hills

Contract Signed

Type	House	Price	\$1,399,000	Sq. Ft.	1,810	Beds	3
DOM	69	Initial	\$1,399,000	PPSF	\$773	Baths	3



80-18 Springfield Boulevard

Oakland Gardens

Contract Signed

Type	House	Price	\$1,350,000	Sq. Ft.	1,838	Beds	4
DOM	9	Initial	\$1,350,000	PPSF	\$735	Baths	2

Compass is a licensed real estate broker and abides by Equal Housing Opportunity laws. All material presented herein is intended for informational purposes only. Information is compiled from sources deemed reliable but is subject to errors, omissions, changes in price, condition, sale, or withdrawal without notice. No statement is made as to the accuracy of any description. All measurements and square footages are approximate. This is not intended to solicit property already listed. Nothing herein shall be construed as legal, accounting or other professional advice outside the realm of real estate brokerage.



27-30 Butler Street

East Elmhurst

Contract Signed

Type	House	Price	\$1,330,000	Sq. Ft.	3,212	Beds	6
DOM	15	Initial	\$1,330,000	PPSF	\$415	Baths	3

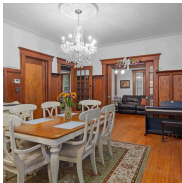


104-47 Ditmars Boulevard

East Elmhurst

Contract Signed

Type	House	Price	\$1,318,000	Sq. Ft.	2,255	Beds	8
DOM	37	Initial	\$1,318,000	PPSF	\$585	Baths	3



154-27 11th Avenue

Beechhurst

Contract Signed

Type	House	Price	\$1,288,888	Sq. Ft.	2,670	Beds	4
DOM	56	Initial	\$1,388,888	PPSF	\$483	Baths	2



80-11 190th Street

Jamaica Estates

Contract Signed

Type	House	Price	\$1,288,000	Sq. Ft.	4,000	Beds	3
DOM	12	Initial	\$1,288,000	PPSF	\$322	Baths	1.5

Compass is a licensed real estate broker and abides by Equal Housing Opportunity laws. All material presented herein is intended for informational purposes only. Information is compiled from sources deemed reliable but is subject to errors, omissions, changes in price, condition, sale, or withdrawal without notice. No statement is made as to the accuracy of any description. All measurements and square footages are approximate. This is not intended to solicit property already listed. Nothing herein shall be construed as legal, accounting or other professional advice outside the realm of real estate brokerage.