



COMPASS

Queens Luxury Report

Nov 03 - 09, 2025, Residential Contracts \$1.25M+

Photo: [147-07 8th Avenue](#)

The Queens luxury real estate market, defined as all properties priced \$1.25M and above, saw 12 contracts signed this week, made up of 1 condo, and 11 houses. The previous week saw 20 deals. For more information or data, please reach out to a Compass agent.

\$1,805,420

Average Asking Price

\$1,694,000

Median Asking Price

\$593

Average PPSF

3%

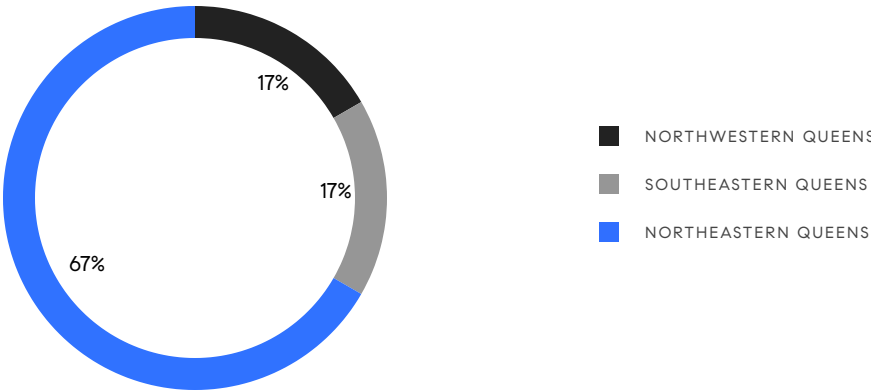
Average Discount

\$21,665,033

Total Volume

70

Average Days On Market



1

Condo Deal(s)

0

Co-op Deal(s)

11

Single-Family Deal(s)

\$2,987,035

Average Asking Price

\$0

Average Asking Price

\$1,698,000

Average Asking Price

\$2,987,035

Median Asking Price

\$0

Median Asking Price

\$1,599,999

Median Asking Price

\$0

Average PPSF

\$593

Average PPSF

0

Average SqFt

3,189

Average SqFt



3 Court Square, Unit PH402

Long Island City

Contract Signed

Type	Condo	Price	\$2,987,035	Sq. Ft.	-	Beds	2
DOM	-	Initial	\$2,987,035	PPSF	-	Baths	2



83-24 Edgerton Boulevard

Jamaica Estates

Contract Signed

Type	House	Price	\$2,389,000	Sq. Ft.	4,400	Beds	6
DOM	105	Initial	\$2,389,000	PPSF	\$543	Baths	5

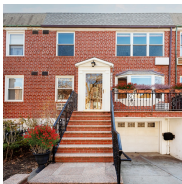


32-45 210th Street

Bayside

Contract Signed

Type	House	Price	\$2,100,000	Sq. Ft.	3,990	Beds	9
DOM	51	Initial	\$2,100,000	PPSF	\$527	Baths	7



26-08 24th Avenue

Astoria

Contract Signed

Type	House	Price	\$1,950,000	Sq. Ft.	2,722	Beds	5
DOM	34	Initial	\$1,950,000	PPSF	\$716	Baths	3



38-16 220th Street

Bayside

Contract Signed

Type	House	Price	\$1,890,000	Sq. Ft.	3,426	Beds	5
DOM	134	Initial	\$1,988,000	PPSF	\$552	Baths	5



53-34 Browvale Lane

Little Neck

Contract Signed

Type	House	Price	\$1,788,000	Sq. Ft.	2,025	Beds	4
DOM	70	Initial	\$1,948,888	PPSF	\$883	Baths	2

Compass is a licensed real estate broker and abides by Equal Housing Opportunity laws. All material presented herein is intended for informational purposes only. Information is compiled from sources deemed reliable but is subject to errors, omissions, changes in price, condition, sale, or withdrawal without notice. No statement is made as to the accuracy of any description. All measurements and square footages are approximate. This is not intended to solicit property already listed. Nothing herein shall be construed as legal, accounting or other professional advice outside the realm of real estate brokerage.

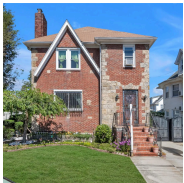


20 Ridge Road

Douglaston

Contract Signed

Type	House	Price	\$1,599,999	Sq. Ft.	5,800	Beds	4
DOM	158	Initial	\$2,499,999	PPSF	\$276	Baths	3



148-11 Kalmia Avenue

Flushing

Contract Signed

Type	House	Price	\$1,588,000	Sq. Ft.	2,760	Beds	4
DOM	51	Initial	\$1,488,000	PPSF	\$576	Baths	3



240-38 Poplar Street

Douglaston

Contract Signed

Type	House	Price	\$1,488,000	Sq. Ft.	2,606	Beds	3
DOM	62	Initial	\$1,488,000	PPSF	\$571	Baths	2



50-22 Overbrook Street

Douglaston

Contract Signed

Type	House	Price	\$1,325,000	Sq. Ft.	-	Beds	3
DOM	29	Initial	\$1,325,000	PPSF	-	Baths	2.5

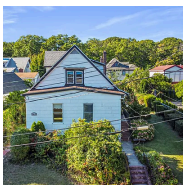


52-50 Little Neck Parkway

Little Neck

Contract Signed

Type	House	Price	\$1,299,999	Sq. Ft.	2,502	Beds	4
DOM	40	Initial	\$1,299,999	PPSF	\$520	Baths	1



184-51 Hovenden Road

Jamaica Estates

Contract Signed

Type	House	Price	\$1,260,000	Sq. Ft.	1,658	Beds	5
DOM	32	Initial	\$1,260,000	PPSF	\$760	Baths	2

Compass is a licensed real estate broker and abides by Equal Housing Opportunity laws. All material presented herein is intended for informational purposes only. Information is compiled from sources deemed reliable but is subject to errors, omissions, changes in price, condition, sale, or withdrawal without notice. No statement is made as to the accuracy of any description. All measurements and square footages are approximate. This is not intended to solicit property already listed. Nothing herein shall be construed as legal, accounting or other professional advice outside the realm of real estate brokerage.