



COMPASS

# Queens Luxury Report

September 01 - 07, 2025, Residential Contracts \$1.25M+

Photo: [41-05 20th Avenue](#)

The Queens luxury real estate market, defined as all properties priced \$1.25M and above, saw 13 contracts signed this week, made up of 2 condos, and 11 houses. The previous week saw 14 deals. For more information or data, please reach out to a Compass agent.

**\$1,600,847**

Average Asking Price

**\$1,380,000**

Median Asking Price

**\$909**

Average PPSF

**1%**

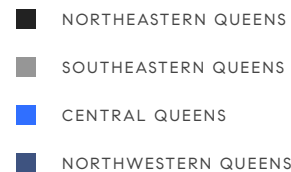
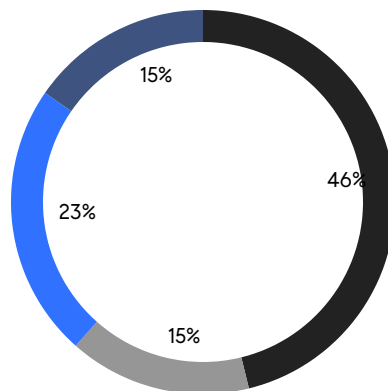
Average Discount

**\$20,811,000**

Total Volume

**133**

Average Days On Market



**2**

Condo Deal(s)

**0**

Co-op Deal(s)

**11**

Single-Family Deal(s)

**\$1,320,000**

Average Asking Price

**\$0**

Average Asking Price

**\$1,651,910**

Average Asking Price

**\$1,320,000**

Median Asking Price

**\$0**

Median Asking Price

**\$1,399,000**

Median Asking Price

**\$1,553**

Average PPSF

**\$781**

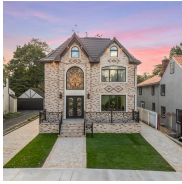
Average PPSF

**855**

Average SqFt

**2,193**

Average SqFt



### 48-06 Glenwood Street

Little Neck

Contract Signed

Type	House	Price	\$2,680,000	Sq. Ft.	3,376	Beds	5
DOM	300	Initial	\$2,680,000	PPSF	\$794	Baths	5



### 86-18 Sutro Street

Holliswood Jamaica

Contract Signed

Type	House	Price	\$2,550,000	Sq. Ft.	2,800	Beds	5
DOM	88	Initial	\$2,550,000	PPSF	\$911	Baths	3



### 180-34 Aberdeen Road

Jamaica Estates

Contract Signed

Type	House	Price	\$1,795,000	Sq. Ft.	1,600	Beds	3
DOM	134	Initial	\$1,795,000	PPSF	\$1,122	Baths	4



### 35-49 167th Street

Murray Hill

Contract Signed

Type	House	Price	\$1,688,000	Sq. Ft.	1,928	Beds	7
DOM	23	Initial	\$1,688,000	PPSF	\$876	Baths	3



### 117-19 Union Turnpike

Forest Hills

Contract Signed

Type	House	Price	\$1,548,000	Sq. Ft.	2,596	Beds	5
DOM	83	Initial	\$1,588,000	PPSF	\$597	Baths	3



### 63-15 Everton Street

Rego Park

Contract Signed

Type	House	Price	\$1,399,000	Sq. Ft.	2,187	Beds	4
DOM	848	Initial	\$1,426,000	PPSF	\$640	Baths	3.5

Compass is a licensed real estate broker and abides by Equal Housing Opportunity laws. All material presented herein is intended for informational purposes only. Information is compiled from sources deemed reliable but is subject to errors, omissions, changes in price, condition, sale, or withdrawal without notice. No statement is made as to the accuracy of any description. All measurements and square footages are approximate. This is not intended to solicit property already listed. Nothing herein shall be construed as legal, accounting or other professional advice outside the realm of real estate brokerage.



### 233-38 38th Drive

Douglaston

Contract Signed

Type	House	Price	\$1,380,000	Sq. Ft.	-	Beds	3
DOM	15	Initial	\$1,380,000	PPSF	-	Baths	2.5



### 40-21 27th Street, Unit 5B

Astoria

Contract Signed

Type	Condo	Price	\$1,365,000	Sq. Ft.	933	Beds	2
DOM	1	Initial	\$1,365,000	PPSF	\$1,464	Baths	2



### 67-23 182nd Street

Fresh Meadows

Contract Signed

Type	House	Price	\$1,299,000	Sq. Ft.	1,350	Beds	3
DOM	86	Initial	\$1,468,000	PPSF	\$963	Baths	2



### 154-54 9th Avenue

Beechhurst

Contract Signed

Type	House	Price	\$1,299,000	Sq. Ft.	2,184	Beds	4
DOM	21	Initial	\$1,299,000	PPSF	\$595	Baths	2

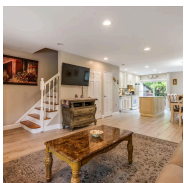


### 46-30 Center Boulevard, Unit 903

Long Island City

Contract Signed

Type	Condo	Price	\$1,275,000	Sq. Ft.	777	Beds	1
DOM	74	Initial	\$1,275,000	PPSF	\$1,641	Baths	1



### 61-61 75th Place

Middle Village

Contract Signed

Type	House	Price	\$1,275,000	Sq. Ft.	2,106	Beds	3
DOM	9	Initial	\$1,275,000	PPSF	\$606	Baths	1

Compass is a licensed real estate broker and abides by Equal Housing Opportunity laws. All material presented herein is intended for informational purposes only. Information is compiled from sources deemed reliable but is subject to errors, omissions, changes in price, condition, sale, or withdrawal without notice. No statement is made as to the accuracy of any description. All measurements and square footages are approximate. This is not intended to solicit property already listed. Nothing herein shall be construed as legal, accounting or other professional advice outside the realm of real estate brokerage.





254-06 West End Drive

Little Neck

Contract Signed

Type	House	Price	\$1,258,000	Sq. Ft.	1,800	Beds	3
DOM	40	Initial	\$1,258,000	PPSF	\$699	Baths	2

Compass is a licensed real estate broker and abides by Equal Housing Opportunity laws. All material presented herein is intended for informational purposes only. Information is compiled from sources deemed reliable but is subject to errors, omissions, changes in price, condition, sale, or withdrawal without notice. No statement is made as to the accuracy of any description. All measurements and square footages are approximate. This is not intended to solicit property already listed. Nothing herein shall be construed as legal, accounting or other professional advice outside the realm of real estate brokerage.