



COMPASS

Queens Luxury Report

May 5 - 11, 2025, Residential Contracts \$1.25M+

Photo: [32-40 213th Street](#)

The Queens luxury real estate market, defined as all properties priced \$1.25M and above, saw 12 contracts signed this week, made up of 5 condos, and 7 houses. The previous week saw 13 deals. For more information or data, please reach out to a Compass agent.

\$1,835,065

Average Asking Price

\$1,495,000

Median Asking Price

\$1,090

Average PPSF

0%

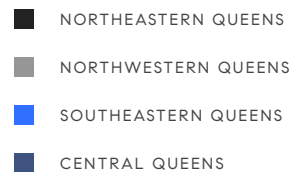
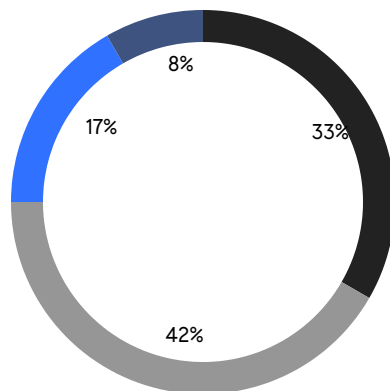
Average Discount

\$22,020,776

Total Volume

114

Average Days On Market



5

Condo Deal(s)

0

Co-op Deal(s)

7

Single-Family Deal(s)

\$1,498,778

Average Asking Price

\$0

Average Asking Price

\$2,075,270

Average Asking Price

\$1,485,000

Median Asking Price

\$0

Median Asking Price

\$1,495,000

Median Asking Price

\$1,457

Average PPSF

\$827

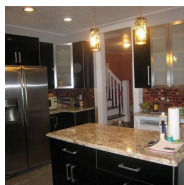
Average PPSF

1,049

Average SqFt

2,548

Average SqFt

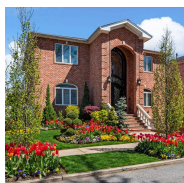


1-05 Malba Drive

Whitestone

Contract Signed

| | | | | | | | |
|------|-------|---------|-------------|---------|---------|-------|---|
| Type | House | Price | \$3,995,000 | Sq. Ft. | 2,624 | Beds | 4 |
| DOM | 390 | Initial | \$3,995,000 | PPSF | \$1,522 | Baths | 5 |



157-03 9th Ave

Beechhurst

Contract Signed

| | | | | | | | |
|------|-------|---------|-------------|---------|-------|-------|---|
| Type | House | Price | \$2,795,000 | Sq. Ft. | 4,500 | Beds | 4 |
| DOM | 68 | Initial | \$2,795,000 | PPSF | \$621 | Baths | 6 |



24-45 Little Neck Blvd

Bay Terrace

Contract Signed

| | | | | | | | |
|------|-------|---------|-------------|---------|-------|-------|---|
| Type | House | Price | \$1,998,888 | Sq. Ft. | 2,180 | Beds | 3 |
| DOM | 62 | Initial | \$1,998,888 | PPSF | \$917 | Baths | 4 |



11-36 45th Road, Unit 601A

Long Island City

Contract Signed

| | | | | | | | |
|------|-------|---------|-------------|---------|---------|-------|---|
| Type | Condo | Price | \$1,670,000 | Sq. Ft. | 901 | Beds | 2 |
| DOM | 1 | Initial | \$1,670,000 | PPSF | \$1,854 | Baths | 2 |

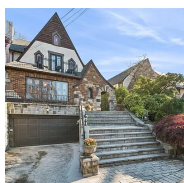


2-17 51st Ave, Unit 204

Long Island City

Contract Signed

| | | | | | | | |
|------|-------|---------|-------------|---------|---------|-------|---|
| Type | Condo | Price | \$1,600,000 | Sq. Ft. | 1,281 | Beds | 2 |
| DOM | 7 | Initial | \$1,600,000 | PPSF | \$1,250 | Baths | 2 |



84-17 Midland Parkway

Jamaica Estates

Contract Signed

| | | | | | | | |
|------|-------|---------|-------------|---------|-------|-------|-----|
| Type | House | Price | \$1,495,000 | Sq. Ft. | 2,639 | Beds | 4 |
| DOM | 154 | Initial | \$1,495,000 | PPSF | \$567 | Baths | 4.5 |

Compass is a licensed real estate broker and abides by Equal Housing Opportunity laws. All material presented herein is intended for informational purposes only. Information is compiled from sources deemed reliable but is subject to errors, omissions, changes in price, condition, sale, or withdrawal without notice. No statement is made as to the accuracy of any description. All measurements and square footages are approximate. This is not intended to solicit property already listed. Nothing herein shall be construed as legal, accounting or other professional advice outside the realm of real estate brokerage.

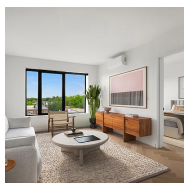


193-11 McLaughlin Ave

Holliswood

Contract Signed

| | | | | | | | |
|------|-------|---------|-------------|---------|-------|-------|---|
| Type | House | Price | \$1,495,000 | Sq. Ft. | 1,979 | Beds | 4 |
| DOM | 36 | Initial | \$1,495,000 | PPSF | \$756 | Baths | 3 |



22-54 46th St, Unit 605

Astoria

Contract Signed

| | | | | | | | |
|------|-------|---------|-------------|---------|---------|-------|---|
| Type | Condo | Price | \$1,485,000 | Sq. Ft. | 1,032 | Beds | 2 |
| DOM | 194 | Initial | \$1,485,000 | PPSF | \$1,439 | Baths | 2 |

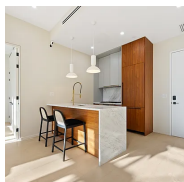


97-36 72nd Drive

Forest Hills

Contract Signed

| | | | | | | | |
|------|-------|---------|-------------|---------|-------|-------|-----|
| Type | House | Price | \$1,449,000 | Sq. Ft. | 2,010 | Beds | 3 |
| DOM | 57 | Initial | \$1,539,000 | PPSF | \$721 | Baths | 2.5 |

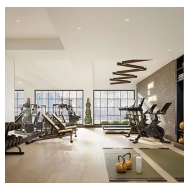


31-16 21st St, Unit PH1B

Astoria

Contract Signed

| | | | | | | | |
|------|-------|---------|-------------|---------|---------|-------|---|
| Type | Condo | Price | \$1,388,888 | Sq. Ft. | 905 | Beds | 2 |
| DOM | 248 | Initial | \$1,388,888 | PPSF | \$1,535 | Baths | 1 |



11-32 31st Ave, Unit 7B

Astoria

Contract Signed

| | | | | | | | |
|------|-------|---------|-------------|---------|---------|-------|---|
| Type | Condo | Price | \$1,350,000 | Sq. Ft. | 1,122 | Beds | 2 |
| DOM | 130 | Initial | \$1,398,000 | PPSF | \$1,204 | Baths | 2 |



14-33 138th St

Whitestone

Contract Signed

| | | | | | | | |
|------|-------|---------|-------------|---------|-------|-------|---|
| Type | House | Price | \$1,299,000 | Sq. Ft. | 1,900 | Beds | 4 |
| DOM | 18 | Initial | \$1,299,000 | PPSF | \$684 | Baths | 2 |

Compass is a licensed real estate broker and abides by Equal Housing Opportunity laws. All material presented herein is intended for informational purposes only. Information is compiled from sources deemed reliable but is subject to errors, omissions, changes in price, condition, sale, or withdrawal without notice. No statement is made as to the accuracy of any description. All measurements and square footages are approximate. This is not intended to solicit property already listed. Nothing herein shall be construed as legal, accounting or other professional advice outside the realm of real estate brokerage.