



COMPASS
Queens
Luxury Report

April 07 - 13, 2025, Residential Contracts \$1.25M+

Photo: [2-17 51st Ave, Unit 913](#)

The Queens luxury real estate market, defined as all properties priced \$1.25M and above, saw 18 contracts signed this week, made up of 4 condos, and 14 houses. The previous week saw 13 deals. For more information or data, please reach out to a Compass agent.

\$1,526,326

Average Asking Price

\$1,489,000

Median Asking Price

\$885

Average PPSF

0%

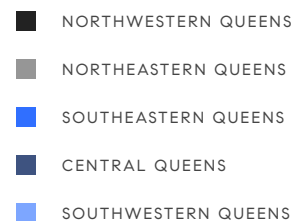
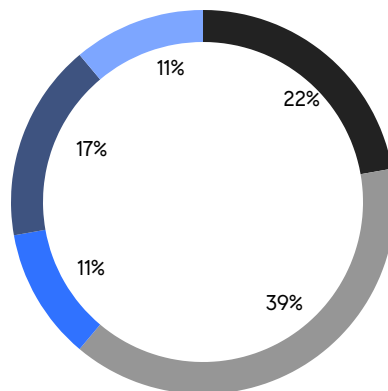
Average Discount

\$27,473,860

Total Volume

65

Average Days On Market

**4**

Condo Deal(s)

0

Co-op Deal(s)

14

Single-Family Deal(s)

\$1,746,466

Average Asking Price

\$0

Average Asking Price

\$1,463,429

Average Asking Price

\$1,824,000

Median Asking Price

\$0

Median Asking Price

\$1,443,500

Median Asking Price

\$1,711

Average PPSF

\$649

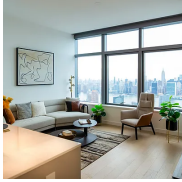
Average PPSF

1,066

Average SqFt

2,428

Average SqFt



3 Court Square, Unit 6012

Long Island City

Contact Signed

Type	Condo	Price	\$2,047,861	Sq. Ft.	969	Beds	2
DOM	-	Initial	\$2,047,861	PPSF	\$2,114	Baths	2



5-09 48th Ave, Unit 3M

Long Island City

Contact Signed

Type	Condo	Price	\$1,949,000	Sq. Ft.	1,595	Beds	3
DOM	54	Initial	\$1,949,000	PPSF	\$1,222	Baths	2



35-31 160th St

Flushing

Contact Signed

Type	House	Price	\$1,798,000	Sq. Ft.	3,298	Beds	3
DOM	167	Initial	-	PPSF	\$545	Baths	3



69-40 168th St

Flushing Heights

Contact Signed

Type	House	Price	\$1,780,000	Sq. Ft.	2,570	Beds	4
DOM	55	Initial	-	PPSF	\$693	Baths	4

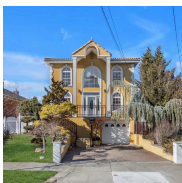


3 Court Square, Unit 505

Long Island City

Contact Signed

Type	Condo	Price	\$1,699,000	Sq. Ft.	937	Beds	2
DOM	237	Initial	\$1,750,000	PPSF	\$1,814	Baths	2



141-33 11th Ave

Whitestone

Contact Signed

Type	House	Price	\$1,688,000	Sq. Ft.	2,881	Beds	3
DOM	38	Initial	-	PPSF	\$586	Baths	5

Compass is a licensed real estate broker and abides by Equal Housing Opportunity laws. All material presented herein is intended for informational purposes only. Information is compiled from sources deemed reliable but is subject to errors, omissions, changes in price, condition, sale, or withdrawal without notice. No statement is made as to the accuracy of any description. All measurements and square footages are approximate. This is not intended to solicit property already listed. Nothing herein shall be construed as legal, accounting or other professional advice outside the realm of real estate brokerage.



2334 Hoffman Ave

Elmont

Contact Signed

Type	House	Price	\$1,499,999	Sq. Ft.	3,200	Beds	5
DOM	29	Initial	-	PPSF	\$469	Baths	5



50-48 214th St

Bayside

Contact Signed

Type	House	Price	\$1,498,000	Sq. Ft.	2,214	Beds	3
DOM	14	Initial	\$1,498,000	PPSF	\$677	Baths	2



178-15 Croydon Road

Jamaica Estates

Contact Signed

Type	House	Price	\$1,490,000	Sq. Ft.	3,140	Beds	5
DOM	28	Initial	-	PPSF	\$475	Baths	6

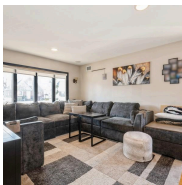


72-17 Kessel St

Forest Hills

Contact Signed

Type	House	Price	\$1,488,000	Sq. Ft.	1,460	Beds	3
DOM	74	Initial	\$1,538,000	PPSF	\$1,020	Baths	2

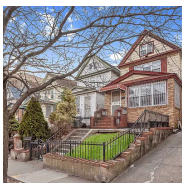


157-31 24th Ave

Flushing

Contact Signed

Type	House	Price	\$1,399,000	Sq. Ft.	2,600	Beds	3
DOM	59	Initial	-	PPSF	\$538	Baths	4



83-13 Britton Ave

Elmhurst

Contact Signed

Type	House	Price	\$1,395,000	Sq. Ft.	1,420	Beds	8
DOM	56	Initial	\$1,395,000	PPSF	\$983	Baths	2.5

Compass is a licensed real estate broker and abides by Equal Housing Opportunity laws. All material presented herein is intended for informational purposes only. Information is compiled from sources deemed reliable but is subject to errors, omissions, changes in price, condition, sale, or withdrawal without notice. No statement is made as to the accuracy of any description. All measurements and square footages are approximate. This is not intended to solicit property already listed. Nothing herein shall be construed as legal, accounting or other professional advice outside the realm of real estate brokerage.



161-16 87th St

Howard Beach

Contact Signed

Type	House	Price	\$1,349,000	Sq. Ft.	2,366	Beds	4
DOM	13	Initial	\$1,349,000	PPSF	\$571	Baths	3

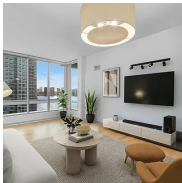


14-34 165th St

Beechhurst

Contact Signed

Type	House	Price	\$1,295,000	Sq. Ft.	2,588	Beds	4
DOM	33	Initial	-	PPSF	\$500	Baths	3



4630 Center Blvd, Unit 1006

Long Island City

Contact Signed

Type	Condo	Price	\$1,290,000	Sq. Ft.	762	Beds	1
DOM	139	Initial	\$1,290,000	PPSF	\$1,693	Baths	1



99-14 74th Ave

Forest Hills

Contact Signed

Type	House	Price	\$1,288,000	Sq. Ft.	2,272	Beds	4
DOM	21	Initial	\$1,288,000	PPSF	\$567	Baths	2



39-18 221st St

Bayside

Contact Signed

Type	House	Price	\$1,270,000	Sq. Ft.	1,272	Beds	3
DOM	10	Initial	\$1,270,000	PPSF	\$999	Baths	2.5



164-50 87th St

Howard Beach

Contact Signed

Type	House	Price	\$1,250,000	Sq. Ft.	2,700	Beds	3
DOM	78	Initial	\$1,250,000	PPSF	\$463	Baths	3

Compass is a licensed real estate broker and abides by Equal Housing Opportunity laws. All material presented herein is intended for informational purposes only. Information is compiled from sources deemed reliable but is subject to errors, omissions, changes in price, condition, sale, or withdrawal without notice. No statement is made as to the accuracy of any description. All measurements and square footages are approximate. This is not intended to solicit property already listed. Nothing herein shall be construed as legal, accounting or other professional advice outside the realm of real estate brokerage.