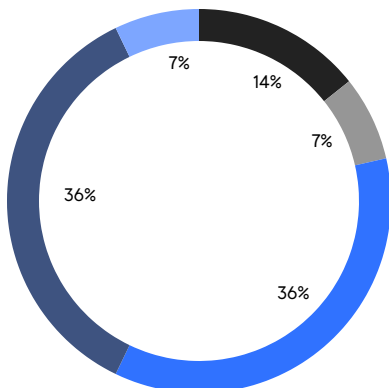
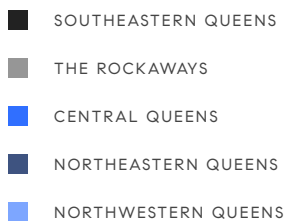


QUEENS WEEKLY LUXURY REPORT



5-09 48TH AVE, UNIT 3M

RESIDENTIAL CONTRACTS
\$1.25 MILLION AND UP



14

CONTRACTS SIGNED
THIS WEEK

\$22,145,999

TOTAL CONTRACT VOLUME

The Queens luxury real estate market, defined as all properties priced \$1.25M and above, saw 14 contracts signed this week, made up of 2 condos, and 12 houses. The previous week saw 20 deals. For more information or data, please reach out to a Compass agent.

\$1,581,858

AVERAGE ASKING PRICE

\$1,523,500

MEDIAN ASKING PRICE

\$873

AVERAGE PPSF

1%

AVERAGE DISCOUNT

\$22,145,999

TOTAL VOLUME

59

AVERAGE DAYS ON MARKET

81-03 Surrey Place in Jamaica Estate entered contract this week, with a last asking price of \$2,238,000. Originally built in 1940, this single-family house spans approximately 1,800 square feet with 4 beds and 4 baths. It features a large landscaped yard and deck area, elegant finishes, modern amenities, and much more.

Also signed this week was 258 Beach 139th Street in Belle Harbor, with a last asking price of \$1,999,999. Originally built in 1940, this single-family house spans 3,520 square feet with 6 bed and 4 baths. It features cathedral ceilings, a landscaped yard, a kitchen with dual sinks, a fully-finished basement, radiant heated floors throughout, high-end appliances, abundant storage, and much more.

2

CONDO DEAL(S)

0

CO-OP DEAL(S)

12

TOWNHOUSE DEAL(S)

\$1,272,500

AVERAGE ASKING PRICE

\$0

AVERAGE ASKING PRICE

\$1,633,417

AVERAGE ASKING PRICE

\$1,272,500

MEDIAN ASKING PRICE

\$0

MEDIAN ASKING PRICE

\$1,573,500

MEDIAN ASKING PRICE

\$1,416

AVERAGE PPSF

\$782

AVERAGE PPSF

1,137

AVERAGE SQFT

2,232

AVERAGE SQFT



81-03 SURREY PL

Jamaica Estates

TYPE	TOWNHOUSE	STATUS	CONTRACT	ASK	\$2,238,000	INITIAL	\$2,238,000
SQFT	1,800	PPSF	\$1,243	BEDS	4	BATHS	4
FEES	\$1,042	DOM	23				



258 BEACH 139TH ST

Belle Harbor

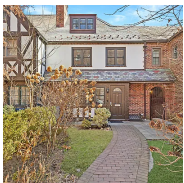
TYPE	TOWNHOUSE	STATUS	CONTRACT	ASK	\$1,999,999	INITIAL	\$1,999,999
SQFT	3,520	PPSF	\$568	BEDS	6	BATHS	4
FEES	\$1,454	DOM	31				



12 MIDDLEMAY CIRCLE

Forest Hills Gardens

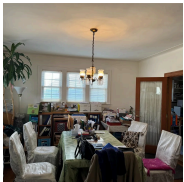
TYPE	TOWNHOUSE	STATUS	CONTRACT	ASK	\$1,998,000	INITIAL	\$2,398,000
SQFT	2,714	PPSF	\$737	BEDS	4	BATHS	3.5
FEES	\$809	DOM	167				



111-14 75TH AVE

Forest Hills

TYPE	TOWNHOUSE	STATUS	CONTRACT	ASK	\$1,748,000	INITIAL	\$1,748,000
SQFT	1,600	PPSF	\$1,093	BEDS	4	BATHS	3
FEES	\$956	DOM	23				



47-49 157TH ST

Flushing

TYPE	TOWNHOUSE	STATUS	CONTRACT	ASK	\$1,600,000	INITIAL	\$1,600,000
SQFT	2,738	PPSF	\$584	BEDS	5	BATHS	5
FEES	\$1,027	DOM	139				



73-25 244TH ST

Douglaston

TYPE	TOWNHOUSE	STATUS	CONTRACT	ASK	\$1,598,000	INITIAL	\$1,688,888
SQFT	3,100	PPSF	\$515	BEDS	5	BATHS	3
FEES	\$1,014	DOM	36				

Compass is a licensed real estate broker and abides by Equal Housing Opportunity laws. All material presented herein is intended for informational purposes only. Information is compiled from sources deemed reliable but is subject to errors, omissions, changes in price, condition, sale, or withdrawal without notice. No statement is made as to the accuracy of any description. All measurements and square footages are approximate. This is not intended to solicit property already listed. Nothing herein shall be construed as legal, accounting or other professional advice outside the realm of real estate brokerage.



336 BURNS ST

Forest Hills Gardens

TYPE	TOWNHOUSE	STATUS	CONTRACT	ASK	\$1,549,000	INITIAL	\$1,549,000
SQFT	2,160	PPSF	\$718	BEDS	4	BATHS	3
FEES	\$834	DOM	59				



66-16 CLYDE ST

Rego Park

TYPE	TOWNHOUSE	STATUS	CONTRACT	ASK	\$1,498,000	INITIAL	\$1,498,000
SQFT	1,944	PPSF	\$771	BEDS	3	BATHS	3.5
FEES	\$793	DOM	28				



130-47 145TH ST

South Jamaica

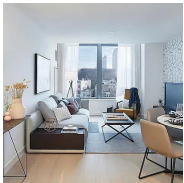
TYPE	TOWNHOUSE	STATUS	CONTRACT	ASK	\$1,450,000	INITIAL	\$1,450,000
SQFT	2,510	PPSF	\$578	BEDS	6	BATHS	5
FEES	\$600	DOM	14				



73-51 187TH ST

Fresh Meadows

TYPE	TOWNHOUSE	STATUS	CONTRACT	ASK	\$1,398,000	INITIAL	\$1,449,000
SQFT	1,619	PPSF	\$863	BEDS	3	BATHS	2
FEES	\$845	DOM	32				



3 COURT SQUARE #3609

Long Island City

TYPE	CONDO	STATUS	CONTRACT	ASK	\$1,295,000	INITIAL	\$1,295,000
SQFT	625	PPSF	\$2,072	BEDS	1	BATHS	1
FEES	\$1,450	DOM	160				



80-13 213TH ST

Oakland Gardens

TYPE	TOWNHOUSE	STATUS	CONTRACT	ASK	\$1,269,000	INITIAL	\$1,269,000
SQFT	1,846	PPSF	\$687	BEDS	3	BATHS	3
FEES	\$923	DOM	35				

Compass is a licensed real estate broker and abides by Equal Housing Opportunity laws. All material presented herein is intended for informational purposes only. Information is compiled from sources deemed reliable but is subject to errors, omissions, changes in price, condition, sale, or withdrawal without notice. No statement is made as to the accuracy of any description. All measurements and square footages are approximate. This is not intended to solicit property already listed. Nothing herein shall be construed as legal, accounting or other professional advice outside the realm of real estate brokerage.



64-64 214TH ST

Oakland Gardens

TYPE	TOWNHOUSE	STATUS	CONTRACT	ASK	\$1,255,000	INITIAL	\$1,255,000
SQFT	1,225	PPSF	\$1,024	BEDS	3	BATHS	2
FEES	\$751	DOM	15				



16-24 JEFFERSON AVE #1B

Ridgewood

TYPE	CONDO	STATUS	CONTRACT	ASK	\$1,250,000	INITIAL	\$1,250,000
SQFT	1,649	PPSF	\$759	BEDS	3	BATHS	3
FEES	\$2,037	DOM	N/A				

Compass is a licensed real estate broker and abides by Equal Housing Opportunity laws. All material presented herein is intended for informational purposes only. Information is compiled from sources deemed reliable but is subject to errors, omissions, changes in price, condition, sale, or withdrawal without notice. No statement is made as to the accuracy of any description. All measurements and square footages are approximate. This is not intended to solicit property already listed. Nothing herein shall be construed as legal, accounting or other professional advice outside the realm of real estate brokerage.